

Spring Base (non GPS) shown  
See page 2 for base options

### Features:

- Broadband
- Frequency 100 - 512 MHz
- Standard NATO pattern base options.
- Designed for use on all modern in-service military platforms, including armoured or soft skin, metal chassis or composite, wheeled or tracked.
- No tuning required.
- Diplexer ( 2 connector) option for use with two transceivers
- High voltage protection option.
- L1 and L1/L2 GPS Options

### Electrical specifications:

Frequency range	100-512MHz
VSWR	≤ 3.5
Nominal impedance	50 ohm
Power rating	50 W +0.8dB, 10 min
Gain	-5.. 1.5 dBi, see page 3
Radiation pattern	Azimuth: Omnidirectional
Polarisation	Vertical
Connector	BNC female, others on request

### Mechanical specifications:

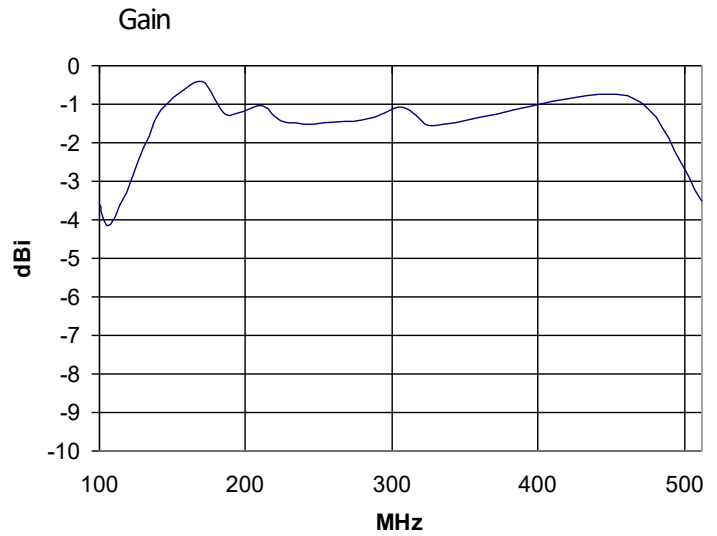
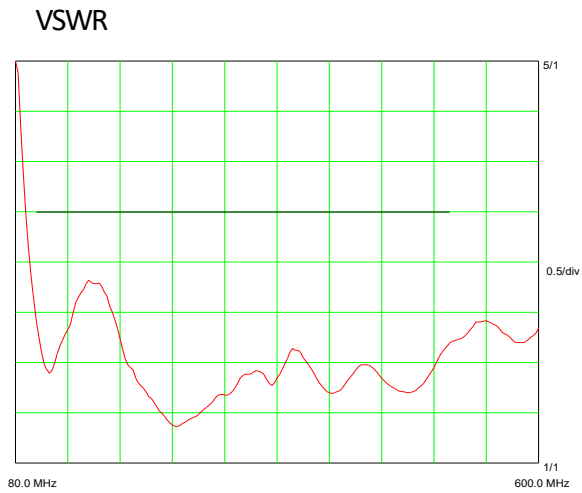
Design	Broad band centre fed dipole. Radiating element completely enclosed in epoxy/fibreglass laminate. Metal parts are brass and stainless steel.
Length *	Total: 1.25m Whip: 1.05m Base: 0.23m
Weight *	Total: 3.65kg Whip: 1.4kg Base: 2.25kg
Wind rating	55 m/s = 125 mph
Finish	Polyurethane lacquer, olive drab, other colours on request.
Temperature range	-55 °C, +71°C; -67 °F, +160 °F
Installation	Standard 4 hole NATO base with spring (see page 2/3 for base options)

\* Standard 4-hole spring base type A

## GPS Electrical Specification (option)

Configuration	L1 GPS	L1/L2 GPS
Frequency Band	1575.42 ± 10 MHz	L1 1575.42 ± 10 MHz L2 1227.60 ± 10 MHz
Supply Voltage	2.7-5.5V	2.7-5.5V
Pre-amplifier	26.5 dB @ 5V	26.5 dB @ 5V
Noise Figure	2.5dB	2.5dB
Supply Current	< 40mA	< 60mA
Polarisation	RHCP	RHCP
Connector	SMA female	SMA female

## VSWR and Gain Curves



## Antenna Base Options

Antenna bases are available to suit the user vehicle or shelter installation. Bases can be configured with the following options:-

1. L1 GPS
2. L1/L2 GPS
3. High voltage protection is available for selected bases



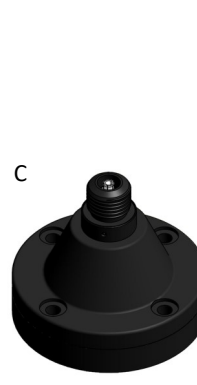
CEF Connector  
(top connection for all bases)



NATO 4-hole Spring  
4 x M10 or 3/8" Bolts  
on 114mm PCD  
Base diameter 140mm (5.5in)  
Base height 240mm (9.5in)



NATO 4-hole Spring GPS  
4 x M10 or 3/8" Bolts  
on 114mm PCD  
Base diameter 140mm (5.5in)  
Base height 280mm (11in)



NATO 4-hole Rigid  
4 x M10 or 3/8" Bolts  
on 114mm (4.5in) PCD  
Base diameter 140mm (5.5in)  
Base height 125mm (5in)



NATO  
50mm Thread  
Base diameter 95mm (3.74in)

**Antenna Base Options (continued)**

E



General Purpose Bulkhead Adaptor  
Mounting hole diameter 22mm

F



Mast Mount Brackets  
40mm Socket  
50mm Socket  
Comrod AMX85 Mast  
Customer Specified

G



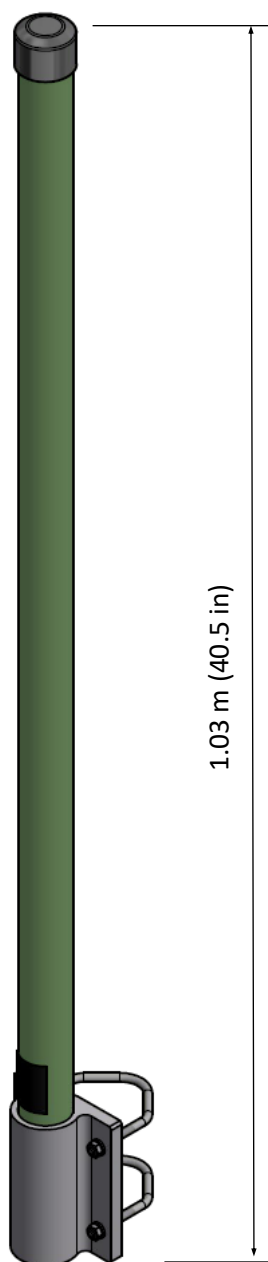
Mast Mount Brackets  
24mm Spigot  
40mm Spigot  
50mm Spigot  
Customer Specified

H



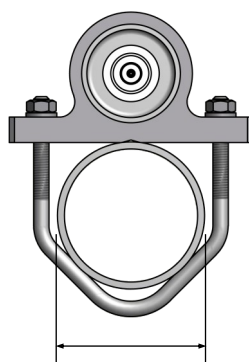
AMX85 Mast Mount Bracket  
To fit Comrod AMX85 mast sections

**Antenna Variants**



**VHF100512M**

A permanent mast mount version is also available.  
Supplied with a fixed mounting plate and U-bolts to fit pole size  $\varnothing$  25-65 mm



Mounting pole diameter  
25-65 mm (1-2.5 in)