

Application

The APX50 is constructed for land mobile services in the HF band 1.6-30 MHz. It consists of four mast sections and a base assembly. The base assembly is equipped with heavy duty spring coil to absorb shocks and to allow for a semi permanent deflection of the antenna when the vehicle is mobile. To reduce visual signature the antenna can also be used with only two sections.

Electrical specifications

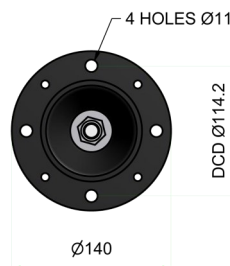
Frequency range	1.6-30 MHz
Electrical length	5 metres
Power rating	400 W
Radiation diagram	Omnidirectional
Polarisation	Vertical

Mechanical specifications

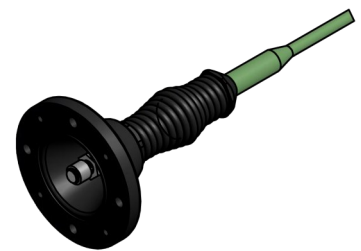
Design	End fed whip. Radiating elements completely enclosed in epoxy/ fibreglass laminate. Metal parts are brass and stainless steel.
Length	2 sections: 2.6 m (8.5 ft) 4 sections: 5.0 m (16.4 ft)
Weight	4 sections: 4.5 kg
Finish	Polyurethane lacquer, olive
Temperature range	-55 °C, +71 °C; -67 °F, +160 °F

Mounting

The base fits onto a standard NATO four-bolt pattern. An optional six hole pattern is also available.

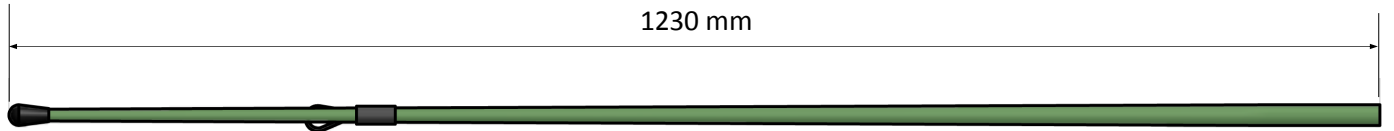


Standard 4-hole Mounting

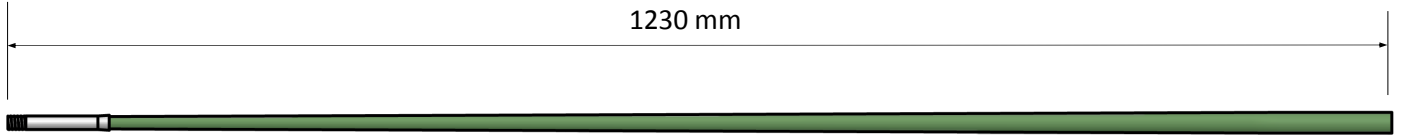


RF cable attachment point

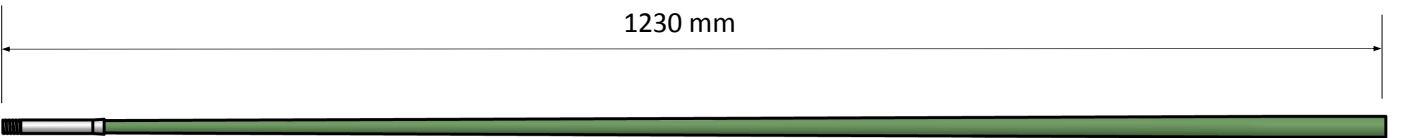
Standard Kit Contents and Dimensions



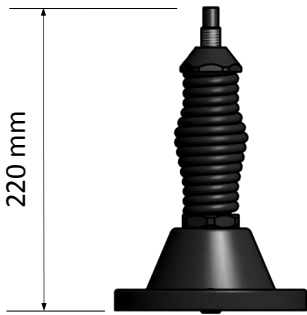
Whip Upper



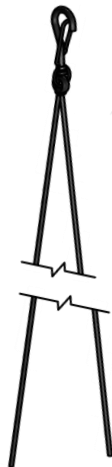
Whip Middle (x2)



Whip Lower



Standard 4-hole
base assembly

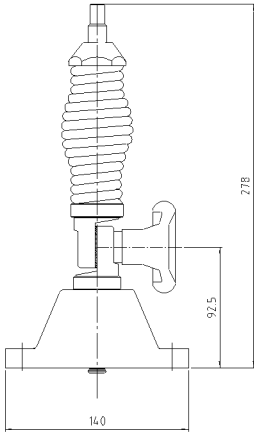


Tie-down Kit

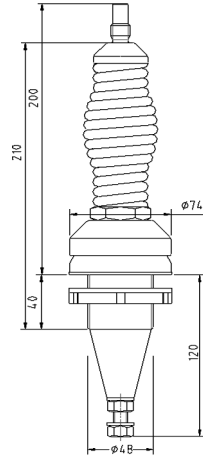
Standard Kit

Description	Qty
4-hole base assembly	1
Whip Lower	1
Whip Middle	2
Whip Upper	1
Tie down kit	1

Options



Optional tilt
base assembly



Optional
50mm base
assembly

4-hole tilting base	8mm spring base, 4-hole mounting pattern with tilting mechanism
6-hole spring base	8mm spring base with 6-hole mounting pattern
50mm base	8mm spring base with Ø50mm mounting
Mounting kit	Bolt kits used to fix the antenna to the platform. Metric and Imperial sizes available
Whip section bag	For added protection during transportation