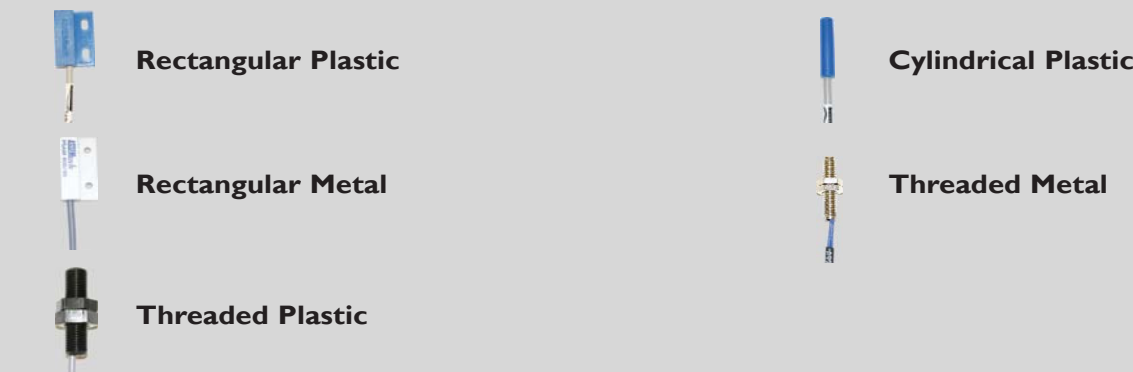


What type are you looking for?.....

### Magnetic Reed Switch Proximity Switches



.....use this catalogue.

### Magnetic Reed Switch Proximity Switches with integrated connectors



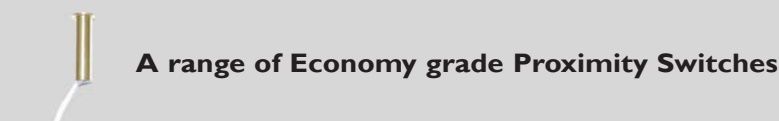
.....use Proximity Switches with integrated connectors catalogue.

### Solid State Hall Effect (Electronic) Proximity Switches



.....use Electronic Proximity Switches catalogue.

### Economy Proximity Switches



.....use Economy Proximity Switches catalogue.

All dimensions are nominal, in millimetres unless otherwise stated. If further information is required, individual datasheets are available on our websites, and on CD. As part of the groups policy of continued product improvement, specifications may change without notice. Our sales office will be pleased to help you with the latest information on our products.

The Comus International group of companies consists of:



Comus International  
454 Allwood Road  
Clifton  
New Jersey 07012  
U.S.A

Tel: (1)973 - 777 - 6900  
Fax: (1)973 - 777 - 8405  
email: [info@comus-intl.com](mailto:info@comus-intl.com)  
Website: <http://www.comus-intl.com>



Assemtech Europe Limited  
Unit 7, Rice Bridge Industrial Estate  
Thorpe - Le - Soken  
Essex  
England  
CO16 0HL

Tel: +44 (0)1255 862236  
Fax: +44 (0)1255 862014  
email: [sales@assemtech.co.uk](mailto:sales@assemtech.co.uk)  
Website: <http://www.assemtech.co.uk>



Comus Belgium BVBA  
Overhaamlaan 40  
B-3700 Tongeren  
Belgium

Tel: +32 (0)12 390400  
Fax: +32 (0)12 235754  
email: [info@comus.be](mailto:info@comus.be)  
Website: <http://www.comus.be>



Comus International SARL  
Immeuble 'Les Juilliottes'  
31 Cours des Juilliottes  
F-94700 Maisons-Alfort  
France

Tel: +33 (0)1 43 96 86 10  
Fax: +33 (0)1 43 96 86 11  
email: [info@comus.fr](mailto:info@comus.fr)  
Website: <http://www.comus.fr>



Switching Technologies Gunther  
B-9, B-10, & C-1 Special Economic Zone (MEPZ)  
Kadapperi  
Tambaram  
Chennai 600 045  
India

Tel: +91 44 22628093  
Fax: +91 44 22628271  
email: [stgltd@eth.net](mailto:stgltd@eth.net)



Comus Electronics and Technologies  
India Private Limited  
No 26, Crescent Park Street  
T Nagar  
Chennai 600 017  
India

Tel: +91 44 42127124  
Fax: +91 44 42127125  
email: [syed@comus-intl.com](mailto:syed@comus-intl.com)  
[venkataraman@comus-intl.com](mailto:venkataraman@comus-intl.com)  
Website: <http://www.comusindia.com>

We also have a large network of worldwide agents. These can be seen on any of our websites, or on our company profile brochure.

# Proximity Switches

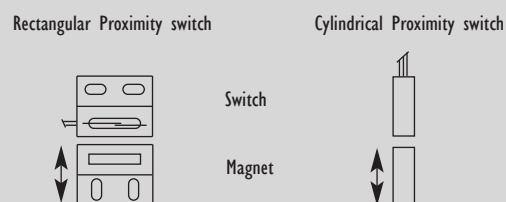


## DESCRIPTION

Reed Proximity Switches are operated by a moving magnet and can be used to detect many directions of movement. When the magnet reaches the operate distance from the reed switch, the reed switch contacts will operate (open or close). Moving the magnet away will cause the reed switch contacts to switch back to their original position.

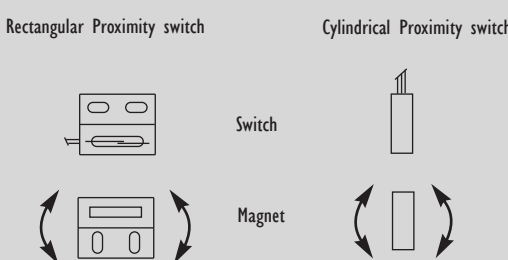
### OPERATION - Perpendicular

A magnet moved perpendicularly towards and away from a switch operates the switch off and on once.



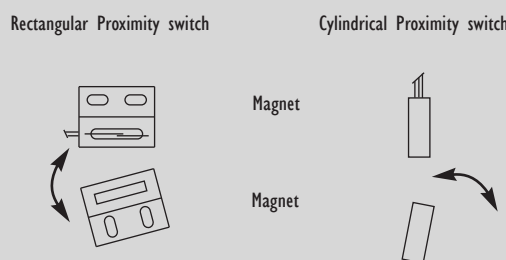
### OPERATION - Rotation

A magnet rotated through 360 degrees will operate the switch contacts at least twice in one cycle.



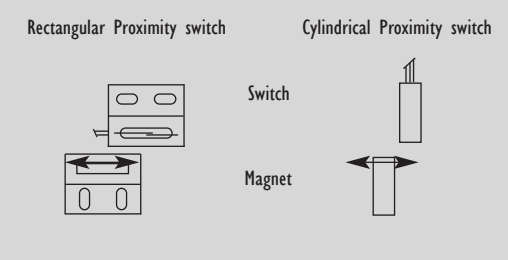
### OPERATION - Swung

A magnet moved perpendicularly towards and away from a switch operates the switch off and on once.

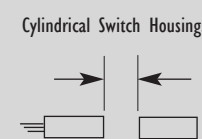
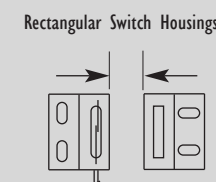


### OPERATION - Parallel

A magnet moving parallel to the switch will operate the switch contacts off and on, one to three times.



## SWITCHING OR OPERATING DISTANCE



The switching distances shown in this catalogue are typical using the suggested magnets. The distance can be changed by using a different magnet. Contact Sales Office for further details.

### Contact Protection

Further information on contact protection and the effects of Inductive and Capacitive loads is detailed in the Reed Switch Catalogue. Contact our sales office for your free copy.

### Electrical Loads

Switch ratings are normally specified for AC resistive loads. Inductive and fast switch cycles will affect the life of the switch. The electrical life expectancy of a reed switch is typically at least 1 million operations at nominal load. Mechanical life is 100 million operations. See reed switch catalogue for more information.

All dimensions are nominal, in millimetres unless otherwise stated. If further information is required, individual datasheets are available on our websites, and on CD. As part of the groups policy of continued product improvement, specifications may change without notice. Our sales office will be pleased to help you with the latest information on our products.



AWG	mm <sup>2</sup>
28	0.05
28	0.08
26	0.14
24	0.25
22	0.34
21	0.38
18	0.75
17	1.0
16	1.5
14	2.5
12	4
10	6
8	10
6	16
4	25
2	35
1	50
2/0	70
3/0	95
4/0	120
300CMH	185
350CMH	240

