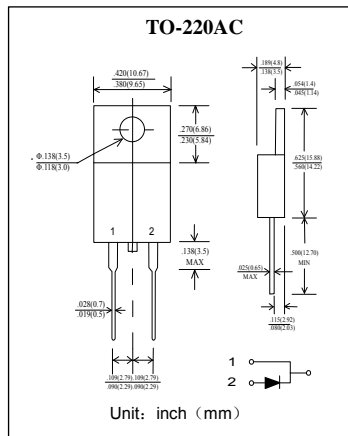


肖特基二极管  
反向电压 40---200V  
正向电流 8.0 A

Schottky Barrier Rectifier  
Reverse Voltage 40 to 200 V  
Forward Current 8.0 A



### 特征 Features

- 大电流承受能力。High Current Capability
- 正向压降低。Low Forward Voltage Drop
- 低功耗高效率。Low Power Loss, High Efficiency
- 引线 and 管体皆符合RoHS标准。  
Lead and body according with RoHS standard

### 机械数据 Mechanical Data

- 封装: 塑料封装 Case: Molded Plastic
- 极性: 标记模压或印于本体 Polarity: Symbols molded or marked on body
- 安装位置: 任意 Mounting Position: Any
- 安装扭矩: 推荐值 0.3牛\*米 Mounting torque: Recommend 0.3 N\*m

极限值和温度特性 TA = 25°C 除非另有规定。

Maximum Ratings & Thermal Characteristics Ratings at 25°C ambient temperature unless otherwise specified.

	符号 Symbols	MBR 840	MBR 845	MBR 850	MBR 860	MBR 880	MBR 8100	MBR 8150	MBR 8200	单位 Unit
最大可重复峰值反向电压 Maximum repetitive peak reverse voltage	$V_{RRM}$	40	45	50	60	80	100	150	200	V
最大均方根电压 Maximum RMS voltage	$V_{RMS}$	28	31.5	35	42	56	70	105	140	V
最大直流阻断电压 Maximum DC blocking voltage	$V_{DC}$	40	45	50	60	80	100	150	200	V
最大正向平均整流电流 Maximum average forward rectified current	$I_{F(AV)}$	8.0								A
峰值正向浪涌电流 8.3ms单一正弦半波 Peak forward surge current 8.3 ms single half sine-wave	$I_{FSM}$	150								A
典型热阻 Typical thermal resistance	$R_{\theta JC}$	2.0								°C/W
工作结温和存储温度 Operating junction and storage temperature range	$T_j, T_{STG}$	-55--- +150								°C

电特性 TA = 25°C 除非另有规定。

Electrical Characteristics Ratings at 25°C ambient temperature unless otherwise specified.

	符号 Symbols	MBR 840	MBR 845	MBR 850	MBR 860	MBR 880	MBR 8100	MBR 8150	MBR 8200	单位 Unit	
最大正向电压 Maximum forward voltage	$I_F = 8.0A$ $V_F$	0.70		0.80		0.85		0.95	0.99	V	
最大反向电流 Maximum reverse current	$T_A = 25^\circ C$ $T_A = 100^\circ C$ $I_R$	0.5					15				mA
典型结电容 Type junction capacitance	$V_R = 4.0V, f = 1MHz$ $C_j$	250								pF	

特性曲线 Characteristic Curves

