

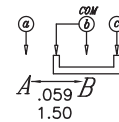
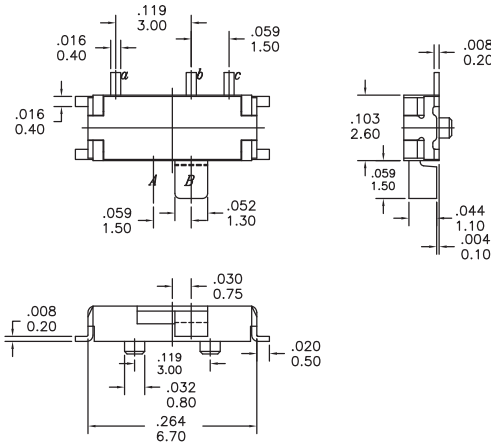
SPECIFICATIONS

ELECTRICAL LIFE: 10,000 cycles
 CONTACT RATING: Switch :100MΩ max
 INSULATION RESISTANCE: 100MΩ min @ 500 VDC.
 CONTACT RESISTANCE: Initial : 50mΩ @ 2-4VDC @ 100mA.
 DIELECTRIC STRENGTH: 500 VAC/1minute.
 CAPACITANCE: 5pf max.
 TEMPERATURE RANGE: Operating/Storage : -20° C to+ 70° C.
 VIBRATION: To MIL-STD-202F. Method 201A.
 SHOCK: To MIL-STD-202F. Method 213B, Condition A.

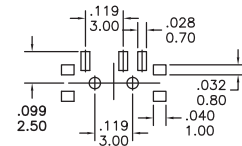
MODEL OPTIONS



MSS3



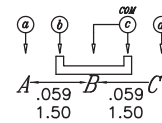
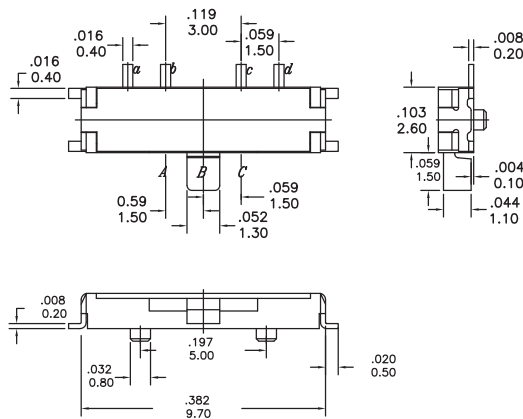
CITCUIT DIAGRAM



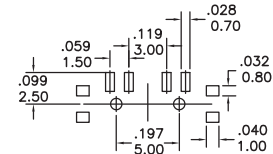
PCB MOUNTING



MSS4



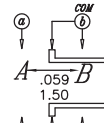
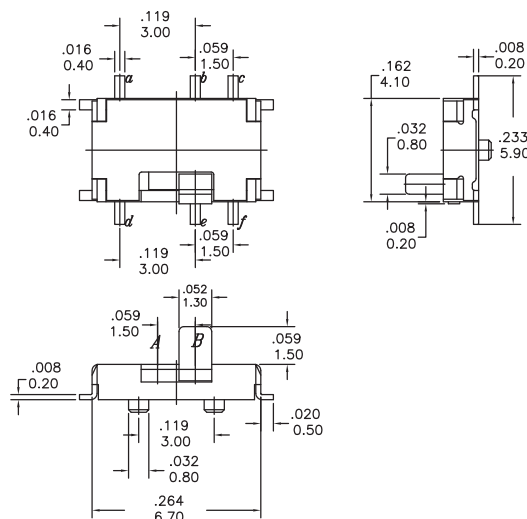
CITCUIT DIAGRAM



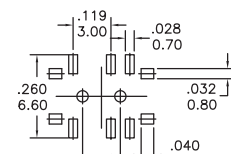
PCB MOUNTING



MSS6



CITCUIT DIAGRAM



PCB MOUNTING