

RH RV RM Series

Rotary Code Switches

SPECIFICATIONS

Voltage Proof: 250VAC for 1 minute.

Switching Rating: 24VDC, 25mA.

Non-Switching Rating: 100mA, 50VDC.

Contact Resistance: (a) 100mΩ max. (Initial) (b) 200mΩ (final-after test)

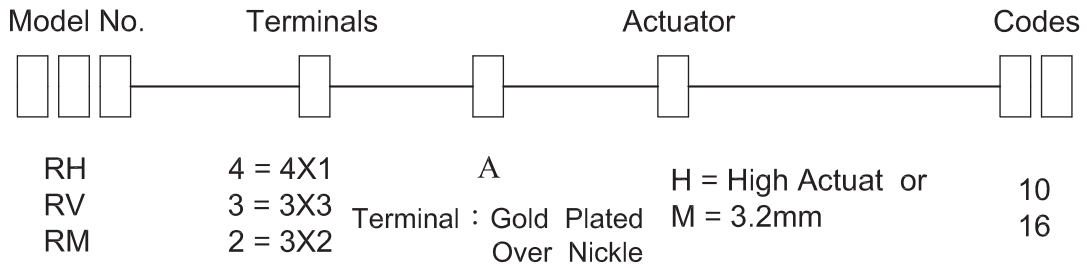
Insulation Resistance: 100MΩ min. at 250VDC.

Operating Temperature Range: -25°C to 80°C.

Solderability: 230 ± 5°C 3± sec. 75%

Electrical Life : 200mΩ max, 20000 steps.

HOW TO ORDER



CIRCUIT CHART

TYPE	POSITION	CODE			
		1	2	4	8
○ 10 (H)	0	●	●	●	●
	1	○	○	●	●
	2	●	○	●	●
	3	○	○	●	●
	4	●	●	○	●
	5	○	●	○	●
	6	●	○	○	●
	7	○	○	○	●
	8	●	●	●	○
	9	○	●	●	○
○ 16 (H)	A	●	○	○	○
	B	○	○	●	○
	C	●	●	○	○
	D	○	●	○	○
	E	●	○	○	○
	F	○	○	○	○

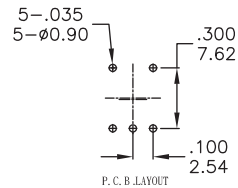
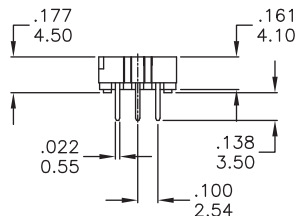
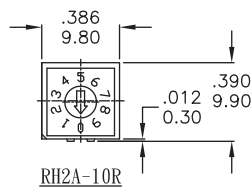
TYPE	POSITION	CODE			
		1	2	4	8
10 STEP	0	●	●	●	●
	1	○	○	●	●
	2	●	○	●	●
	3	○	○	●	●
	4	●	●	○	●
	5	○	●	○	●
	6	●	○	○	●
	7	○	○	○	●
	8	●	●	●	○
	9	○	●	●	○
16 STEP	A	●	○	○	○
	B	○	○	●	○
	C	●	●	○	○
	D	○	●	○	○
	E	●	○	○	○
	F	○	○	○	○

TYPE	POSITION	CODE			
		1	2	4	8
10 R	0	○	○	○	○
	1	○	○	○	○
	2	○	○	○	○
	3	○	○	○	○
	4	○	○	○	○
	5	○	○	○	○
	6	○	○	○	○
	7	○	○	○	○
	8	○	○	○	○
	9	○	○	○	○
16 R	A	○	○	○	○
	B	○	○	○	○
	C	○	○	○	○
	D	○	○	○	○
	E	○	○	○	○
	F	○	○	○	○

RH RV RM
Rotary Switches



RH2A-XXX



Available Mode No.
RH2A-10R
RH2A-16R
RH2A-16C

RH RV RM Series

Rotary Code Switches



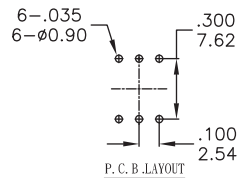
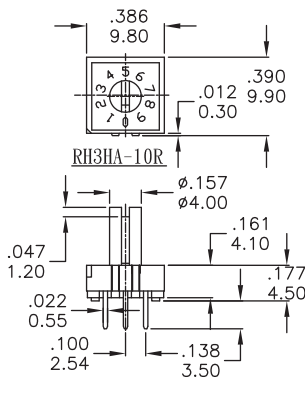
RH3HA-XXX



RH3HA-16R



RH3HA-16C



Available Mode No.

RH3HA-10R
RH3HA-16R
RH3HA-16C



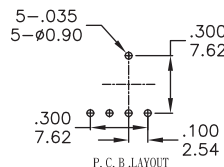
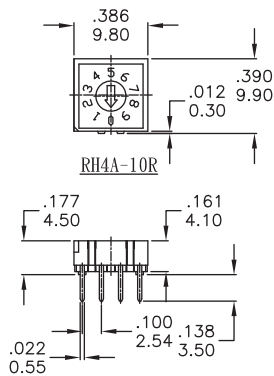
RH4A-XXX



RH4A-16R



RH4A-16C



Available Mode No.

RH4A-10R
RH4A-16R
RH4A-16C



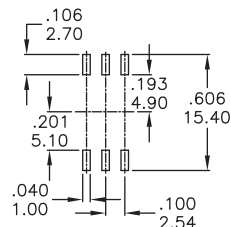
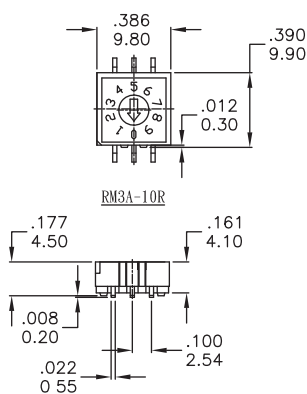
RM3A-XXX



RM3A-16R



RM3A-16C



Available Mode No.

RM3A-10R
RM3A-16R
RM3A-16C



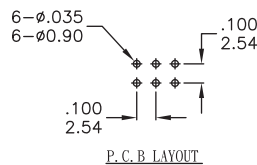
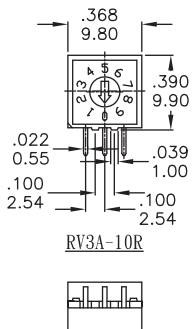
RV3A-XXX



RV3A-16R



RV3A-16C



Available Mode No.

RV3A-10R
RV3A-16R
RV3A-16C

RH RV RM Series

Rotary Code Switches



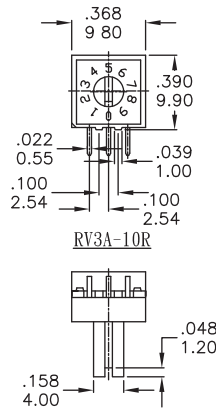
RV3HA-XXX



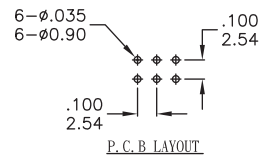
RV3A-16R



RV3A-16C



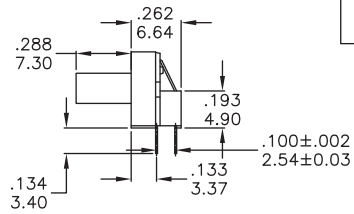
RV3A-10R



P. C. B. LAYOUT

Available Mode No.

- RV3HA-10R
- RV3HA-16R
- RV3HA-16C



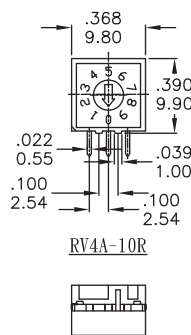
RV4A-XXX



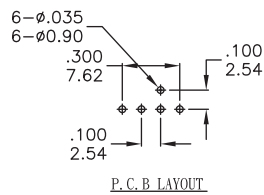
RV4A-16R



RV4A-16C



RV4A-10R



P. C. B. LAYOUT

Available Mode No.

- RV4A-10R
- RV4A-16R
- RV4A-16C

