

Jack Plates



PT-625B1 Flush Jack

PREMIER[®] PT-625B1 Flush Jack

Flush jack assembly is designed for flush mounting in a standard outlet box. It includes a 625F modular jack, 19A faceplate, 43A bracket, and mounting screws. The conductor leads are equipped with ring terminals for easier installation.

- UL listed
- FCC part 68 compliant

PREMIER

Item No.	Mfg. Part No.	Description	Dimensions	USOC Codes
4807337500	PT-625B1-4-50	6P4C Ivory	2.8"W x 0.8"H x 4.6"L	RJ11C - 14C / RJ1DC
4834257500	PT-625B1-6-44	6P6C Ash	2.8"W x 0.8"H x 4.6"L	RJ18C - 19C / RJ25C

PREMIER PT-625B3 Flush Jack



PT-625B3 Flush Jack

Duplex flush jack assembly is designed for flush mounting in a standard outlet box. This duplex flush jack is a one-piece unit with two independent jacks and mounting screws. Conductor leads are equipped with ring terminals for easier installation. The PT-625B3E provides spring loaded protective doors to protect the jacks from contaminants.

- UL listed
- FCC part 68 compliant



PT-625B3E Flush Jack

PREMIER

Item No.	Mfg. Part No.	Description	Dimensions	USOC Codes
4830167500	PT-625B3-4-44	6P4C Duplex Ash	2.8"W x 0.8"H x 4.6"L	RJ11C - 14C / RJ1DC
4801497500	PT-625B3-4-50	6P4C Duplex Ivory	2.8"W x 0.8"H x 4.6"L	RJ11C - 14C / RJ1DC
4845767500	PT-625B3-4-85	6P4C Duplex White	2.8"W x 0.8"H x 4.6"L	RJ11C - 14C / RJ1DC
4831267500	PT-625B3-6-44	6P6C Duplex Ash	2.8"W x 0.8"H x 4.6"L	RJ18C - 19C / RJ25C
4807047500	PT-625B3-6-50	6P6C Duplex Ivory	2.8"W x 0.8"H x 4.6"L	RJ18C - 19C / RJ25C
4845777500	PT-625B3-6-85	6P6C Duplex White	2.8"W x 0.8"H x 4.6"L	RJ18C - 19C / RJ25C

600 New Century Parkway
 New Century, Kansas 66031-8000
 1.800.755.1950

www.kgplistics.com

Jack Plates



625B3DV / 625B3DVE Flush Jack

PREMIER

Item No.	Mfg. Part No.	Description	Dimensions	USOC Codes
4831077500	PT-625B3DV-4-44	6P4C Duplex Labeled DATA and VOICE Ash	2.8"W x 0.8"H x 4.6"L	RJ11C - 14C / RJ1DC
4830877500	PT-625B3DV-6-44	6P6C Duplex Labeled DATA and VOICE Ash	2.8"W x 0.8"H x 4.6"L	RJ18C - 19C / RJ25C
4845787500	PT-625B3DV-6-85	6P6C Duplex Labeled DATA and VOICE White	2.8"W x 0.8"H x 4.6"L	RJ18C - 19C / RJ25C

PREMIER® PT-625B3DV Flush Jack

Duplex flush jack assembly is designed for flush mounting in a standard outlet box. This duplex flush jack is a one-piece unit with two independent jacks and mounting screws. One jack is labeled DATA and the other jack is labeled VOICE. Conductor leads are equipped with ring terminals for easier installation.

- UL listed
- FCC part 68 compliant



PT-625B4 Flush Jack

PREMIER

Item No.	Mfg. Part No.	Description	Dimensions	USOC Codes
4806567500	PT-625B4-4-44	6P4C Ash	2.8"W x 0.8"H x 4.6"L	RJ11C - 14C / RJ1DC
4808367500	PT-625B4-4-50	6P4C Ivory	2.8"W x 0.8"H x 4.6"L	RJ11C - 14C / RJ1DC
4801677500	PT-625B4E-4-50	6P4C With Spring Loaded Door Ivory	2.8"W x 0.8"H x 4.6"L	RJ11C - 14C / RJ1DC
4832137500	PT-625B4-4-85	6P4C White	2.8"W x 0.8"H x 4.6"L	RJ11C - 14C / RJ1DC
4806617500	PT-625B4-6-44	6P6C Ash	2.8"W x 0.8"H x 4.6"L	RJ18C - 19C / RJ25C
4809357500	PT-625B4-6-50	6P6C Ivory	2.8"W x 0.8"H x 4.6"L	RJ18C - 19C / RJ25C
4845757500	PT-625B4-6-85	6P6C White	2.8"W x 0.8"H x 4.6"L	RJ18C - 19C / RJ25C

PREMIER PT-625B4 Flush Jack

Flush jack assembly is designed for flush mounting in a standard outlet box. This flush jack is a one-piece unit with a single modular jack and mounting screws. Conductor leads are equipped with ring terminals for easier installation. The PT-625B4E provides spring loaded protective doors to protect the jacks from contaminants.

- UL listed
- FCC part 68 compliant



PT-630B Flush Jack

PREMIER

Item No.	Mfg. Part No.	Description	Dimensions	USOC Codes
4807257500	PT-630AB-4-44	6P4C Ash	3.0"W x 0.3"H x 4.5"L	RJ11W - 14W
4807267500	PT-630AB-6-44	6P6C Ash	3.0"W x 0.3"H x 4.5"L	RJ18C - 19C / RJ25C

PREMIER® PT-630AB Flush Jack

The PT-630AB flush jack assembly includes a steel base with screw terminals, a plastic cover, and mounting screws. This flush jack is enclosed by a plastic wrapper to eliminate problems due to condensation or moisture. Conductor lead terminals are riveted in place for easier installation.

Surface Blocks



PT-19316L7 Outdoor Jack

PREMIER PT-19316L7 Surface Block

The PT-19316L7 is a 4 conductor outdoor surface jack constructed of die cast aluminum and has a corrosion resistant finish. The modular jack rotates to allow for various wire entrances. This jack also contains a bracket and removal lugs. The spring-loaded, moisture-resistant gasket cap insures a weather-proof seal.

- UL listed
- FCC part 68 compliant

PREMIER

Item No.	Mfg. Part No.	Description	Dimensions	USOC Codes
4807387505	PT-19316L7-4	Outdoor 6P4C With Weather Proof Cap	3"W x 2.9"H x 4.7"L	RJ11C-14C / RJ1DC



PT-404M Surface Block

PREMIER PT-404M Surface Block

The PT-404M surface block is designed for surface mounting on walls or baseboards where external wiring is necessary. It can also be flush mounted in any electrical box by using a 44 bracket and a 19B faceplate. The PT-404M surface block comes with two 1-1/2" wood screws. Conductor leads are equipped with ring terminals for easier installation.

- UL listed
- FCC part 68 compliant

PREMIER

Item No.	Mfg. Part No.	Description	Dimensions	USOC Codes
4801477500	PT-404M-4-50	6P4C Ivory	1.8"W x 1"H x 1.8" L	RJ11C - 14C / RJ1DC

Surface Blocks



PT-402A Surface Block

PREMIER® PT-42A Surface Block

The PT-42A surface block is designed for terminating non-modular desk telephones. Each screw terminal is equipped with two washers. The PT-42A surface block includes a standard 42A block and screw-on cover.

- UL listed
- FCC part 68 compliant

PREMIER

Item No.	Mfg. Part No.	Description	Dimensions
7710137505	PT-42A-4-50	6P4C Ivory	2.1"W x 0.8"H x 2.1"L



PT-625A2-8 Surface Block

PREMIER PT-625A2 Surface Block (8 Conductor)

The PT-625A2-8 surface block is an 8 conductor jack used for voice, data, or security/ alarm transmission devices. This surface block consists of screw terminals, a snap-on cover, and double-sided adhesive tape for a convenient and efficient jack that will mount on most flat surfaces. The PT-625A2-8 surface block is available as a non-keyed, keyed, or non-keyed with shorting bars. Shorting bars bridge together jack contacts 1 to 4 and 2 to 5 whenever a plug is not inserted. Shorting bars bridge together jack contacts 1 to 2 and 4 to 5 on the RJ48X "Smart Jack" 4841637500.

- UL listed
- FCC part 68 compliant

PREMIER

Item No.	Mfg. Part No.	Description	Dimensions	USOC Codes
4841637500	PT-625A2-8K-2-52	8P8C Keyed RJ48X "Smart Jack" Electrical Ivory	2.3"W x 1.0"H x 2.3"L	RJ48X
4845827500	PT-625A2-8K-44	8P8C Keyed RJ48S Ash	2.3"W x 1.0"H x 2.3"L	RJ48S
4832097500	PT-625A2-8K-50	8P8C Keyed RJ48S Ivory	2.3"W x 1.0"H x 2.3"L	RJ48S
4808797500	PT-625A2-8SB-44	8P8C Non-Keyed with Shorting Bars Ash	2.3"W x 1.0"H x 2.3"L	RJ31X - 38X
4806317500	PT-625A2-8SB-50	8P8C Non-Keyed with Shorting Bars Ivory	2.3"W x 1.0"H x 2.3"L	RJ31X - 38X
4830087500	PT-625A2-8NK-44	8P8C Non-Keyed RJ48C Ash	2.3"W x 1.0"H x 2.3"L	RJ48C
4843247500	PT-625A2-8NK-50	8P8C Non-Keyed RJ48C Ivory	2.3"W x 1.0"H x 2.3"L	RJ48C
4844017500	PT-625A2-8NK-85	8P8C Non-Keyed RJ48C White	2.3"W x 1.0"H x 2.3"L	RJ48C

Surface Blocks

PREMIER® PT-625A3 Surface Block



PT-625A3 Surface Block

The PT-625A3 surface block is a pre-wired modular jack with a snap-on cover and a base that contains 66-style punch-down clips.



PT-625A3-8 Surface Block

- UL listed
- FCC part 68 compliant

PREMIER

Item No.	Mfg. Part No.	Description	Dimensions	USOC Codes
4830317505	PT-625A3-4-44	6P4C With 66 Style IDC Ash	1.2"W x 2.0"H x 2.3"L	RJ11C - 14C / RJ1DC
4830327505	PT-625A3-6-44	6P6C With 66 Style IDC Ash	1.2"W x 2.0"H x 2.3"L	RJ18C - 19C / RJ25C



PT-625A Surface Block

PREMIER PT-625A Surface Block

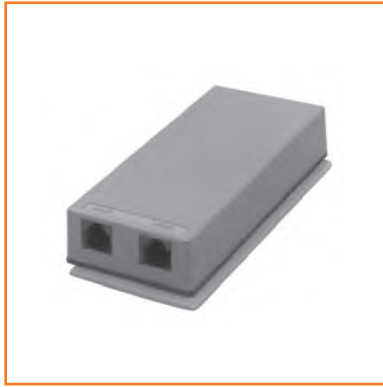
The PT-625A surface block mounts on any flat surface and includes a standard 42A block and a screw-on cover. The standard jack is equipped with spade tipped terminals for easy access.

- UL listed
- FCC part 68 compliant

PREMIER

Item No.	Mfg. Part No.	Description	Dimensions	USOC Codes
4807167500	PT-625A-4-44	6P4C Ash	2.2"W x 0.8"H x 2.6"L	RJ11C - 14C / RJ1DC
4807587500	PT-625A-4-50	6P4C Ivory	2.2"W x 0.8"H x 2.6"L	RJ11C - 14C / RJ1DC
4806587500	PT-625A-6-44	6P6C Ash	2.2"W x 0.8"H x 2.6"L	RJ18C - 19C / RJ25C
4806167500	PT-625A-6-50	6P6C Ivory	2.2"W x 0.8"H x 2.6"L	RJ18C - 19C / RJ25C

Surface Blocks



PT-625ADV / PT-625ALL Surface Block

PREMIER® PT-625ALL/PT-625ADV Surface Block

The PT-625 duplex surface block provides dual 4 conductor or 6 conductor jacks packaged into a slim housing which fits most office tele-power poles and other restricted mounting surfaces. Each jack is conveniently labeled DATA/VOICE (PT-625ADV) or LINE1/LINE2 (PT-625 ALL). Assembly includes a snap-on cover, ring terminals, and double-sided adhesive tape.

- UL listed
- FCC part 68 compliant

PREMIER

Item No.	Mfg. Part No.	Description	Dimensions	USOC Codes
4831057500	PT-625ADV-4-44	Duplex 6P4C Labeled DATA and VOICE Ash	2.1"W x 0.9"H x 4.6"L	RJ11C - 14C / RJ1DC
4831067500	PT-625ALL-4-44	Duplex 6P4C Labeled LINE 1 and LINE 2 Ash	2.1"W x 0.9"H x 4.6"L	RJ11C - 14C / RJ1DC
4831087500	PT-625ADV-6-44	Duplex 6P6C Labeled DATA and VOICE Ash	2.1"W x 0.9"H x 4.6"L	RJ18C - 19C / RJ25C
4831097500	PT-625ALL-6-44	Duplex 6P6C Labeled LINE 1 and LINE 2 Ash	2.1"W x 0.9"H x 4.6"L	RJ18C - 19C / RJ25C
4845797500	PT-625ADV-6-85	Duplex 6P6C Labeled DATA and VOICE White	2.1"W x 0.9"H x 4.6"L	RJ18C - 19C / RJ25C
4845817500	PT-625ALL-6-85	Duplex 6P6C Labeled LINE 1 and LINE 2 White	2.1"W x 0.9"H x 4.6"L	RJ18C - 19C / RJ25C



PT-625AQ2 Surface Block

PREMIER PT-625AQ2 Surface Block

The PT-625AQ2 surface block is designed for direct mounting on any flat surface. This assembly includes a base, snap-on cover, and double-sided adhesive tape. Conductor leads are equipped with ring terminals for easier installation.

- UL listed
- FCC part 68 compliant

PREMIER

Item No.	Mfg. Part No.	Description	Dimensions	USOC Codes
4807677500	PT-625AQ2-4-44	6P4C Ash	2.0"W x 0.9" H x 2.3"L	RJ11C - 14C / RJ1DC
4808547500	PT-625AQ2-4-50	6P4C Ivory	2.0"W x 0.9" H x 2.3"L	RJ11C - 14C / RJ1DC
4843977500	PT-625AQ2-4-85	6P4C White	2.0"W x 0.9" H x 2.3"L	RJ11C - 14C / RJ1DC
4807757500	PT-625AQ2-6-44	6P6C Ash	2.0"W x 0.9" H x 2.3"L	RJ18C - 19C / RJ25C
4808577500	PT-625AQ2-6-50	6P6C Ivory	2.0"W x 0.9" H x 2.3"L	RJ18C - 19C / RJ25C
4843987500	PT-625AQ2-6-85	6P6C White	2.0"W x 0.9" H x 2.3"L	RJ18C - 19C / RJ25C

Surface Blocks



Surface Block

PREMIER

PREMIER® PT-635A1M Surface Block with Cord

These security/alarm kits consist of a PT-635A1M 8 conductor block and an 8 conductor line cord. The PT-TW kit includes a 3 foot plug-to-spade data cord. The PT-TW2 kit includes a 3 foot plug-to-plug data cord. The PT-635A1M is an 8 conductor block used for security/alarm transmission devices. This surface block consists of screw terminals, a snap-on cover, and double-sided adhesive tape for a convenient and efficient jack that will mount on most flat surfaces. Shorting bars bridge together positions 1 to 4 and 5 to 8 whenever a modular plug is not inserted into the jack.

- UL listed
- FCC part 68 compliant

Item No.	Mfg. Part No.	Description	Dimensions	USOC Codes
4841047500	PT-TW2	8P8C RJ31X Kit With 3 Foot Plug to Plug Line Cord Ash	2.0"W x 1.0"H x 2.0"L	RJ31X - 38X
4841037500	PT-TW	8P8C RJ31X Kit With 3 Foot Plug to Spade Line Cord Ash	2.0"W x 1.0"H x 2.0"L	RJ31X - 38X



PT-742A Wire Junction Box

PREMIER

PREMIER PT-742A Wire Junction Box

The PT-742A junction box mounts directly on any flat surface. This junction box connects 4 additional extensions, in parallel, to an existing modular jack. Conductors do not need to be stripped to be connected to the color-coded screw terminals. This junction box consists of a base, snap-on cover and mounting screws. The PT-742A also contains a 12 inch 4 conductor cord with a modular plug.

- UL listed
- FCC part 68 compliant

Item No.	Mfg. Part No.	Description	Dimensions
4808947505	PT-742A-4-50	6P4C Wire Junction Box With 12 Inch Cord Ivory	2.0"W x 1.3"H x 4.4"L



PT-625C Surface Block Cover

PREMIER

PREMIER® PT-625C Surface Block Cover

The PT-625C surface block cover is used in conjunction with an existing standard 42A block to provide a modular connection. The cover includes a fastening screw and spade tipped wire terminals.

- UL listed
- FCC part 68 compliant

Item No.	Mfg. Part No.	Description	Dimensions	USOC Codes
4807297500	PT-625C-4-44	Cover 6P4C Ash	2.2"W x 0.9"H x 2.7" L	RJ11C - 14C / RJ1DC

Surface Blocks



PT-625S Surface Block

PREMIER PT-625S Surface Block

The PT-625S surface block features a rotating jack cover that protects the jack from contamination when not in use. It consists of a 625T cover with spade tip leads and a 42A Block.

- UL listed
- FCC part 68 compliant

PREMIER

Item No.	Mfg. Part No.	Description	Dimensions	USOC Codes
4807987500	PT-625S-6-50	6P6C With Rotating Cover Ivory	2.3"W x 0.8"H x 3.5"L	RJ18C - 19C / RJ25C



PT-625SA/PT-625T Surface Block / Cover

PREMIER® PT-625SA Gel Surface Block

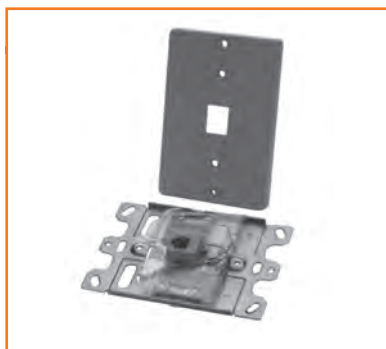
The PT-625SA-4-GEL-52 surface block is filled with a non-toxic water and corrosion resistant gel. The gel keeps the connection points clean and prevents corrosion. A spring-loaded rotating jack cover protects the jack from contamination when not in use. It consists of a 625T cover with spade tip leads and a 42B block.

- UL listed
- FCC part 68 compliant

PREMIER

Item No.	Mfg. Part No.	Description	Dimensions	USOC Codes
4846847500	PT-625SA-4-GEL-52	6P4C With Rotating Cover Gel Filled Electrical Ivory	2.3"W x 1.4"H x 3.5"L	RJ11C - 14C / RJ1DC

Wall Jacks



PT-630AC Wall Jack

PREMIER

Item No.	Mfg. Part No.	Description	Dimensions	USOC Codes
4806547500	PT-630AC-4-44	6P4C Ash	3.0"W x 0.3"H x 4.5"L	RJ11W - 14W
4802377500	PT-630AC-6-44	6P6C Ash	3.0"W x 0.3"H x 4.5"L	RJ18C - 19C / RJ25C
4845747500	PT-630AC-6-85	6P6C White	3.0"W x 0.3"H x 4.5"L	RJ18C - 19C / RJ25C

PREMIER PT-630AC Wall Jack

The PT-630AC wall jack uses screw terminals with conductor leads that are riveted in place for easier installation.

- UL listed
- FCC part 68 compliant



PT-630AD Wall Jack

PREMIER

Item No.	Mfg. Part No.	Description	Dimensions	USOC Codes
4807397500	PT-630AD-4	6P4C Steel	3.0"W x 0.3"H x 4.5"L	RJ11W - 14W
4807417500	PT-630AD-6	6P6C Steel	3.0"W x 0.3"H x 4.5"L	RJ18C - 19C / RJ25C

PREMIER® PT-630AD Wall Jack

The PT-630AD wall jacks are stainless steel and use screw terminals with conductor leads that are riveted in place for easier installation.

- UL listed
- FCC part 68 compliant



PT-630AP Wall Jack

(Note: Corners are round not octagonal.)

PREMIER

Item No.	Mfg. Part No.	Description	Dimensions	USOC Codes
4807687500	PT-630AP-4-44	6P4C Ash	3.0"W x 0.3"H x 4.5"L	RJ11W - 14W
4838137500	PT-630AP-4-50	6P4C Ivory	3.0"W x 0.3"H x 4.5"L	RJ11W - 14W
4847797500	PT-630AP-4-85	6P4C White	3.0"W x 0.3"H x 4.5"L	RJ11W - 14W
4807697500	PT-630AP-6-44	6P6C Ash	3.0"W x 0.3"H x 4.5"L	RJ18C - 19C / RJ25C
4838147500	PT-630AP-6-50	6P6C Ivory	3.0"W x 0.3"H x 4.5"L	RJ18C - 19C / RJ25C

PREMIER PT-630AP Wall Jack

The PT-630AP wall jacks use screw terminals with conductor leads that are riveted in place for easier installation.

- UL listed
- FCC part 68 compliant

Wall Jacks



PT-630B Wall Jack

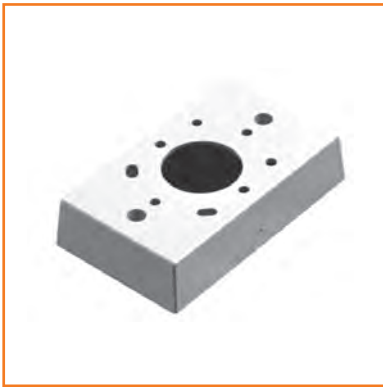
PREMIER PT-630 Wall Jack Spacer

The PT-630-SPACER is a wall jack spacer designed to assist in surface mounting of steel bracketed PT-630-type wall jacks.

- UL listed
- FCC part 68 compliant

PREMIER

Item No.	Mfg. Part No.	Description	Dimensions
4807477500	PT-630-SPACER-44	Spacer Ash	3.0"W x 0.2"H x 4.5"L



PT-625MB Flush Jack Mounting Box

PREMIER® PT-625MB Mounting Box

Flush jack mounting box is designed to allow surface mounting for rectangular jack assemblies and jack plates.

- UL listed
- FCC part 68 compliant

PREMIER

Item No.	Mfg. Part No.	Description	Dimensions
4830887500	PT-625MB-44	Mounting Box One Inch Deep Ash	2.7"W x 4.6" H x 1.0" D
4830737500	PT-625MB-50	Mounting Box One Inch Deep Ivory	2.7"W x 4.6" H x 1.0" D
4837777500	PT-625MB-85	Mounting Box One Inch Deep White	2.7"W x 4.6" H x 1.0" D

PREMIER PT-20502 Mounting Bracket

Flush jack round plastic mounting bracket (AT&T Comcode 401-307-244) is referred to as a mud ring for round flush jacks. This bracket is used to wall mount 625F round flush jacks.

- UL listed
- FCC part 68 compliant

PREMIER

Item No.	Mfg. Part No.	Description
4835767500	PT-20502-L2	Round Plastic Mounting Bracket For Round Flush Jacks

Adapters



PT-153AM Adapter

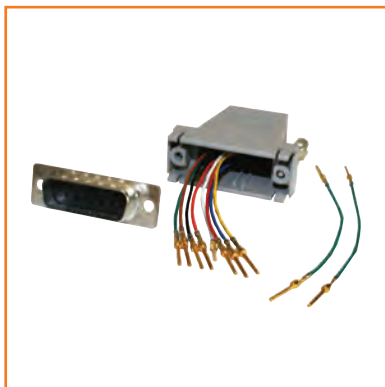
PREMIER® PT-153 Adapter

The PT-153AM adapter is designed to allow an ancillary device, electronic key set, or single line telephone set equipped with a modular plug-ended line cord to be connected to an existing 25 pair connector. No re-wiring is necessary.

- UL listed
- FCC part 68 compliant

PREMIER

Item No.	Mfg. Part No.	Description	Wiring Sequence
4806027505	PT-153AM2-BLACK	Adapter Female 25 Pair to 6P4C	Red-1; Green-26; Yellow-2; Black-27
4806057505	PT-153AM3-BLACK	Adapter Female 25 Pair to 6P6C	Red-1; Green-26; Yellow-2; Black-27; White-25; Blue-50
4833737505	PT-153AM-6-3P	Adapter Female 25 Pair to 6P6C	Red-1; Green-26; Yellow-2; Black-27; White-3; Blue-28



Data Adapter

PREMIER Data Adapters

A Data Adapter is used to convert DB9, DB15, or DB25 male or female data ports to an 8 position modular jack interface. It includes the data connector, two piece ABS plastic shell, and thumbscrews. It is customizable for any application.

- UL listed
- FCC part 68 compliant

PREMIER

Item No.	Mfg. Part No.	Description
4462267500	PT-DB9F-8P8C-TS	Adapter DB9F With Thumbscrews to 8P8C
4462257500	PT-DB9M-8P8C-TS	Adapter DB9M With Thumbscrews to 8P8C
4462287500	PT-DB15F-8P8C-TS	Adapter DB15F With Thumbscrews to 8P8C
4462277500	PT-DB15M-8P8C-TS	Adapter DB15M With Thumbscrews to 8P8C
4460637500	PT-DB25F-8P8C-TS	Adapter DB25F With Thumbscrews to 8P8C
4461297500	PT-DB25M-8P8C-TS	Adapter DB25M With Thumbscrews to 8P8C

Adapters



PT-267B T-Adapter

PREMIER

Item No.	Mfg. Part No.	Description
4831897500	PT-267B-50	6P4C Plug Splits 2 Lines Into Line 1 and Line 2 in Parallel

PREMIER® PT-267B Modular T-Adapters

The PT-267B T-Adapter is a 4 conductor adapter that connects 2 telephones or ancillary devices to 2 outside lines. This T-Adapter plugs into a standard 4 conductor modular jack where two outside lines have been wired. The T-Adapter is equipped with 4 conductor plugs and two 4 conductor jacks, that provides 2 parallel lines.

- UL listed
- FCC part 68 compliant



PT-267C T-Adapter

PREMIER

Item No.	Mfg. Part No.	Description
4831237500	PT-267C-50	6P4C Plug to 6p4C PHONE and 6P2C MODEM

PREMIER PT-267C Modular T-Adapters

The PT-267C T-Adapter is equipped with a 6 position 4 wire jack for voice transmission (marked PHONE) and a 6 position 2 wire jack for data transmission (marked MODEM). This adapter is designed for combining voice and data transmission through a single modular jack.

- UL listed
- FCC part 68 compliant



PT-267A-4 Modular T-Adapte (with Tail)

PREMIER

Item No.	Mfg. Part No.	Description
0000198475	PT-267A-4-50-TAIL	6P4C Plug to Dual 6P4C Jacks with 4" Line Cord Tail

PREMIER PT-267A-4 Modular T-Adapter (with Tail)

The PT-267A-4 Modular T-Adapter (with Tail) connects two telephone or ancillary devices to one outside line using an existing modular installation. Two 6 position 4 conductor jacks are wired in parallel to one 6 position 4 conductor plug, mounted at the end of a 4-inch line cord tail. The 4-inch line cord tail provides extra flexibility during installations, to avoid blocking adjacent ports on installed CPE or hardware.

- UL listed
- FCC part 68 compliant

Adapters



PT-267A/267E T-Adapters

PREMIER® PT-267A Modular T-Adapters

The PT-267A T-Adapter connects two telephones or ancillary devices to one outside line using an existing modular installation. The 6 conductor model includes a 4 position plug and two jacks, each equipped with 6 contacts in parallel. The 4 conductor model has 4 contacts in parallel.

- UL listed
- FCC part 68 compliant

PREMIER

Item No.	Mfg. Part No.	Description
4830197500	PT-267A-4-50	6P4C Plug to Dual 6P4C Jacks
4807667500	PT-267A-6-50	6P4C Plug to Dual 6P6C Jacks In Parallel



PT-173 T-Adapter

PREMIER PT-173 Modular T-Adapters

The PT-173 Triple T-Adapter is used with 2 line modular systems. This T-Adapter is plugged into a 4 conductor modular jack that is wired for 2 lines. Jack 1 is labeled Line 1; Jack 2 is labeled Line 2; Jack 3 is labeled Line1/Line2. Two single-line phones can be connected to the Line 1 and Line 2 jacks. The third jack can be used to run a modular cord to another jack enabling the user to connect two single-line telephones. This will extend the 2 lines to various phones throughout the premises.

- UL listed
- FCC part 68 compliant

PREMIER

Item No.	Mfg. Part No.	Description
4831417500	PT-173-50	6P4C Plug to 3 Jacks (L1, L2, L1+L2)

Couplers



PT-460A Line Cord Couplers

PREMIER® PT-460 Modular Line Cord Couplers

Cord couplers are designed to connect 2 modular plug ended line cords together to allow extensions of plug ended line cords.

- UL listed
- FCC part 68 compliant

PREMIER

Item No.	Mfg. Part No.	Description
4830277500	PT-460A-4-50	6P4C Ivory
4830427500	PT-460A-6-50	6P6C Ivory



PT-1542A Filter

PREMIER PT-1542A Radio Interference Filter

The PT-1542A jack is non-modular and used to filter AM/FM and CB broadcast interference. This 4 conductor jack can be used in place of a 42A connecting block. The plastic base consists of a toroidal choke coil plus screw terminals and is housed in a plastic cover. Installation consists of connecting the spade leads from a non-modular line cord to the wire leads inside the filter.

- UL listed
- FCC part 68 compliant

PREMIER

Item No.	Mfg. Part No.	Description	Dimensions
4803757505	PT-1542A-60	Hard-wired Filter for AM/FM and CB Radio Broadcasts	2"W x 1"H x 4"L



PT-1542AM Filter

PREMIER PT-1542AM Radio Interference Filter

The PT-1542AM jack is designed to filter AM/FM and CB radio broadcast interference. This 6 position 4 conductor modular filter is used in place of a surface mounted jack. The plastic base and cover house the radio interference filter.

- UL listed
- FCC part 68 compliant

PREMIER

Item No.	Mfg. Part No.	Description	Dimensions	USOC Codes
4830247505	PT-1542AM-49	Modular Filter for AM/FM and CB Radio Broadcasts	2"W x 1"H x 4.5"L	RJ11C / RJ12C