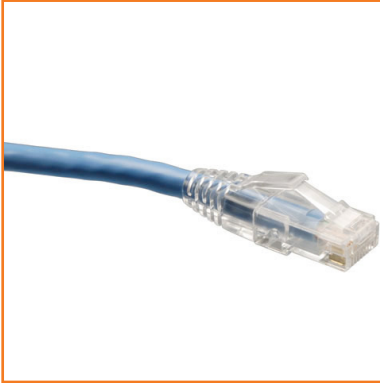


PREMIER® Patch Cords

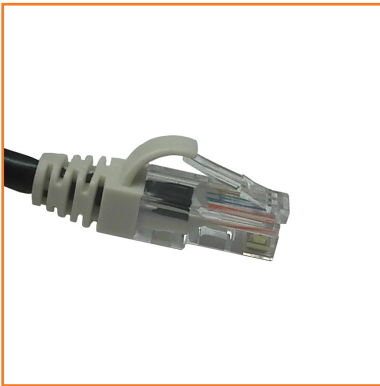


Category 6 Patch Cords

Factory terminated with stranded 4 pair 24 AWG Category 6 data grade patch cordage. Exceeds ANSI/TIA-568 component transmission requirements for Category 6 Patch Cords. Terminated with Category 6 snagless, strain relief plugs on both ends. Ideal for quickly cross connecting voice or data circuits on patch panels or for connecting voice or data equipment to the network.

Features and Benefits

- » UL listed
- » FCC part 68 compliant
- » Category 6 compliant



Category 5e Patch Cords

Factory terminated with stranded 4 pair 24 AWG Category 5e data grade patch cordage. Exceeds ANSI/TIA-568 component transmission requirements for Category 5e Patch Cords. Terminated with Category 5e snagless, strain relief plugs on both ends. Ideal for quickly cross connecting voice or data circuits on patch panels or for connecting voice or data equipment to the network.

Features and Benefits

- » UL listed
- » FCC part 68 compliant
- » Category 5e compliant



Category 5e Work Area Cords

Factory terminated with stranded 4 pair 24 AWG Category 5e data grade patch cordage. Meets ANSI/TIA-568 channel requirements for Category 5e Work Area Cords greater than 5 meters or 16 feet. Terminated with Category 5e snagless, strain relief plugs on both ends. Ideal for connecting voice or data equipment in an open office architecture where longer work area cords are required.

Features and Benefits

- » UL listed
- » FCC part 68 compliant
- » Category 5e compliant



Category 5e Crossover Cords

Factory terminated with stranded 4 pair 24 AWG Category 5e data grade patch cordage and Category 5e snagless, strain relief plugs on both ends. Ideal for quickly cross connecting voice or data equipment to the network.

Features and Benefits

- » UL listed
- » FCC part 68 compliant
- » Category 5e compliant

PREMIER® Patch Cords

Ordering Information

Category 6 Patch Cords		
Item Number	Part Number	Description
9661247500	PT-PCL6-BLU-3	Blue 3 Foot
9661257500	PT-PCL6-BLU-5	Blue 5 Foot
9661267500	PT-PCL6-BLU-7	Blue 7 Foot
9661277500	PT-PCL6-BLU-10	Blue 10 Foot
9661287500	PT-PCL6-BLU-14	Blue 14 Foot
9661307500	PT-PCL6-GRY-3	Gray 3 Foot
9661317500	PT-PCL6-GRY-5	Gray 5 Foot
9661327500	PT-PCL6-GRY-7	Gray 7 Foot
9661337500	PT-PCL6-GRY-10	Gray 10 Foot
9661377500	PT-PCL6-GRY-14	Gray 14 Foot
9661507500	PT-PCL6-RED-3	Red 3 Foot
9661607500	PT-PCL6-RED-5	Red 5 Foot
9661707500	PT-PCL6-RED-7	Red 7 Foot
9661777500	PT-PCL6-RED-10	Red 10 Foot
9661787500	PT-PCL6-RED-14	Red 14 Foot
0000222732	PT-PCL6-WHT-1	White 1 Foot
9661807500	PT-PCL6-WHT-3	White 3 Foot
9661827500	PT-PCL6-WHT-5	White 5 Foot
9661907500	PT-PCL6-WHT-7	White 7 Foot
9662007500	PT-PCL6-WHT-10	White 10 Foot
9662107500	PT-PCL6-WHT-14	White 14 Foot
0000222733	PT-PCL6-WHT-25	White 25 Foot
0000222734	PT-PCL6-YEL-1	Yellow 1 Foot
0000066364	PT-PCL6-YEL-3	Yellow 3 Foot
0000066365	PT-PCL6-YEL-5	Yellow 5 Foot
0000066366	PT-PCL6-YEL-7	Yellow 7 Foot
0000066361	PT-PCL6-YEL-10	Yellow 10 Foot
0000066362	PT-PCL6-YEL-14	Yellow 14 Foot
0000222735	PT-PCL6-GRN-1	Green 1 Foot
0000222736	PT-PCL6-GRN-3	Green 3 Foot
0000222737	PT-PCL6-GRN-5	Green 5 Foot
0000222738	PT-PCL6-GRN-7	Green 7 Foot
0000425488	PT-PCL6-GRN-10	Green 10 Foot
0000425489	PT-PCL6-GRN-14	Green 14 Foot

All PREMIER Structured Wiring System products have a 25-year limited warranty from the date of shipment against defects in materials and workmanship occurring under normal and proper use, to perform in accordance with the transmission performance requirements outlined in the current edition of the ANSI/TIA/EIA-568 specification. Within the warranty period, KGP Products, Inc. will replace any PREMIER Structured Wiring System product that proves to be defective. KGP Products, Inc. will not be responsible for any labor costs or other costs to remove or reinstall any defective product. KGP Products, Inc., in its sole discretion, may replace a defective product with a substantially similar product. This warranty does not extend to damage or failure that results from misuse, neglect, accidents, alterations, abuse, improper handling, shipment, storage, installation, and/or maintenance. To make a claim under this warranty, contact KGP Products, Inc. at 1-800-755-1950 or by fax at 1-913-393-6791 within the warranty period.

Category 5e Patch Cords		
Item Number	Part Number	Description
0000086583	PT-PCL5E-BLACK-3	Black 3 Foot
0000030569	PT-PCL5E-BLACK-5	Black 5 Foot
0000085429	PT-PCL5E-BLACK-7	Black 7 Foot
0000030567	PT-PCL5E-BLACK-10	Black 10 Foot
0000030568	PT-PCL5E-BLACK-16	Black 16 Foot
9660687500	PT-PCL5E-BLU-3	Blue 3 Foot
9660717500	PT-PCL5E-BLU-5	Blue 5 Foot
9660727500	PT-PCL5E-BLU-7	Blue 7 Foot
9660747500	PT-PCL5E-BLU-10	Blue 10 Foot
9660767500	PT-PCL5E-BLU-14	Blue 14 Foot
9660797500	PT-PCL5E-GRY-3	Gray 3 Foot
9660827500	PT-PCL5E-GRY-5	Gray 5 Foot
9660837500	PT-PCL5E-GRY-7	Gray 7 Foot
9660857500	PT-PCL5E-GRY-10	Gray 10 Foot
9660877500	PT-PCL5E-GRY-14	Gray 14 Foot
4492627500	PT-PCL5E-RED-3	Red 3 Foot
4492647500	PT-PCL5E-RED-5	Red 5 Foot
4492657500	PT-PCL5E-RED-7	Red 7 Foot
4492677500	PT-PCL5E-RED-10	Red 10 Foot
4492697500	PT-PCL5E-RED-14	Red 14 Foot
9660577500	PT-PCL5E-WHT-3	White 3 Foot
9660597500	PT-PCL5E-WHT-5	White 5 Foot
9660617500	PT-PCL5E-WHT-7	White 7 Foot
9660637500	PT-PCL5E-WHT-10	White 10 Foot
9660657500	PT-PCL5E-WHT-14	White 14 Foot
9010237500	PT-PCL5E-YLW-3	Yellow 3 Foot
9010257500	PT-PCL5E-YLW-5	Yellow 5 Foot
9010267500	PT-PCL5E-YLW-7	Yellow 7 Foot
9010277500	PT-PCL5E-YLW-10	Yellow 10 Foot
9010287500	PT-PCL5E-YLW-14	Yellow 14 Foot

Category 5e Work Area Cords		
Item Number	Part Number	Description
9660607500	PT-PCL5E-BLU-20	Blue 20 Foot
9660707500	PT-PCL5E-BLU-30	Blue 30 Foot
9660807500	PT-PCL5E-BLU-50	Blue 50 Foot
9660907500	PT-PCL5E-BLU-70	Blue 70 Foot
9660977500	PT-PCL5E-GRY-20	Gray 20 Foot
9661007500	PT-PCL5E-GRY-30	Gray 30 Foot
9661107500	PT-PCL5E-GRY-50	Gray 50 Foot
9661207500	PT-PCL5E-GRY-70	Gray 70 Foot
9660197500	PT-PCL5E-RED-20	Red 20 Foot
9660207500	PT-PCL5E-RED-30	Red 30 Foot
9660217500	PT-PCL5E-RED-50	Red 50 Foot
9660227500	PT-PCL5E-RED-70	Red 70 Foot
9660237500	PT-PCL5E-WHT-20	White 20 Foot
9660307500	PT-PCL5E-WHT-30	White 30 Foot
9660407500	PT-PCL5E-WHT-50	White 50 Foot
9660507500	PT-PCL5E-WHT-70	White 70 Foot

Category 5e Crossover Cords		
Item Number	Part Number	Description
4660017501	PT-COC-L5E-RED-14	Crossover Cord 14 Foot Red

Ask your KGP Logistics Customer Service Representative for more details and place your order today. 800-755-1950.

600 New Century Parkway | New Century, Kansas 66031-8000 | 1.800.755.1950 | www.dependonpremier.com

© 2015 All rights reserved. The name PREMIER and the PREMIER logo are trademarks of KGP Logistics, Inc. 04/23/15