



1.5 AMP FAST RECOVERY BRIDGE RECTIFIERS

FEATURES

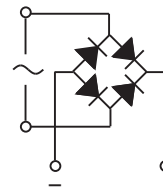
- PRV Ratings from 50 to 1000 Volts
- Surge overload rating to 50 Amps peak
- Reliable low cost molded epoxy construction
- Ideal for printed circuit board applications
- Fast switching for high efficiency
- **UL RECOGNIZED - FILE #E124962**
- **RoHS COMPLIANT**

MECHANICAL DATA

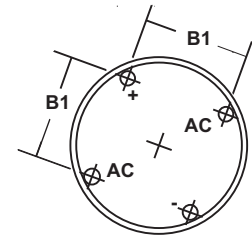
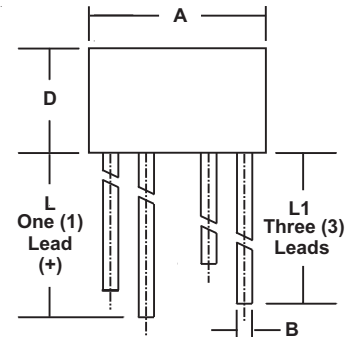
- Case: Molded Epoxy, U/L Flammability Rating 94V-0
- Terminals: Round tin plated pins
- Soldering: Per MIL-STD 202 Method 208 guaranteed
- Polarity: Marked on case
- Mounting Position: Any
- Weight: 0.05 Ounces (1.3 Grams)

MECHANICAL SPECIFICATION

ACTUAL SIZE OF
FWB PACKAGE



SERIES FWB150 - FWB1510



SYM	MILLIMETERS		INCHES	
	MIN	MAX	MIN	MAX
A	8.6	8.89	0.340	0.350
B	0.76	0.81	0.030	0.032
B1	4.6	5.6	0.180	0.220
D	5.1	5.6	0.200	0.220
L	27.94	n/a	1.10	n/a
L1	25.4	n/a	1.0	n/a

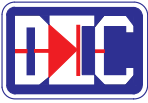
MAXIMUM RATINGS & ELECTRICAL CHARACTERISTICS

Ratings at 25 °C ambient temperature unless otherwise specified.
 Single phase, half wave, 60Hz, resistive or inductive load.
 For capacitive loads, derate current by 20%.

PARAMETER (TEST CONDITIONS)	SYMBOL	RATINGS							UNITS
		FWB 150	FWB 151	FWB 152	FWB 154	FWB 156	FWB 158	FWB 1510	
Series Number									
Maximum DC Blocking Voltage	V _{RM}	50	100	200	400	600	800	1000	VOLTS
Maximum RMS Voltage	V _{RMS}	35	70	140	280	420	560	700	
Maximum Peak Recurrent Reverse Voltage	V _{RRM}	50	100	200	400	600	800	1000	
Average Forward Rectified Current @ T _c = 75 °C	I _O	1.5							AMPS
Peak Forward Surge Current (8.3ms single half sine wave superimposed on rated load) T _J = 125 °C	I _{FSM}	50							
Maximum Forward Voltage (Per Diode) at 1 Amp DC	V _{FM}	1.3							VOLTS
Maximum Average DC Reverse Current at Rated DC Blocking Voltage (Per Bridge Element) @ T _A = 25 °C @ T _A = 100 °C	I _{RM}	10 1							μA mA
Maximum Reverse Recovery Time (Note 1)	T _{RR}	200		300		500		nS	
Typical Thermal Resistance, Junction to Ambient (Note 2)	R _{θJA}	40							°C/W
Minimum Insulation Breakdown Voltage (Circuit to Case)	V _{ISO}	2400							VOLTS
Junction Temperature Range	T _J	-55 to +135							°C
Storage Temperature Range	T _{STG}	-55 to +135							

NOTES: (1) T_J=25°C, I_F=0.5A, I_R=1A, I_{RR}=0.25A
 (2) Mounted on PC Board with 0.2" sq. (5.5mm sq.) copper pads and lead length of 0.375" (9.5mm)

3211-5wb



1.5 AMP FAST RECOVERY SILICON BRIDGE RECTIFIERS

RATING & CHARACTERISTIC CURVES FOR SERIES FWB150 - FWB1510

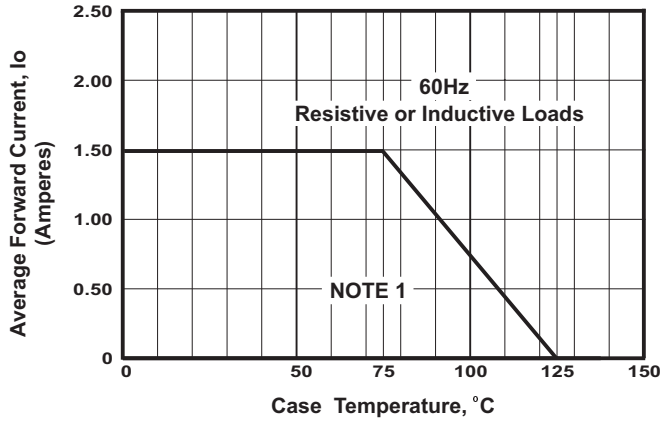


FIGURE 1. FORWARD CURRENT DERATING CURVE

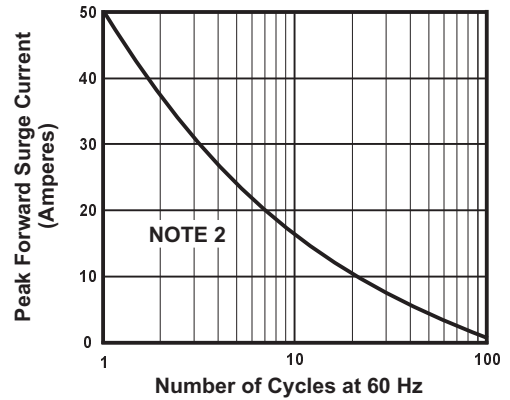


FIGURE 2. MAXIMUM NON-REPETITIVE SURGE CURRENT

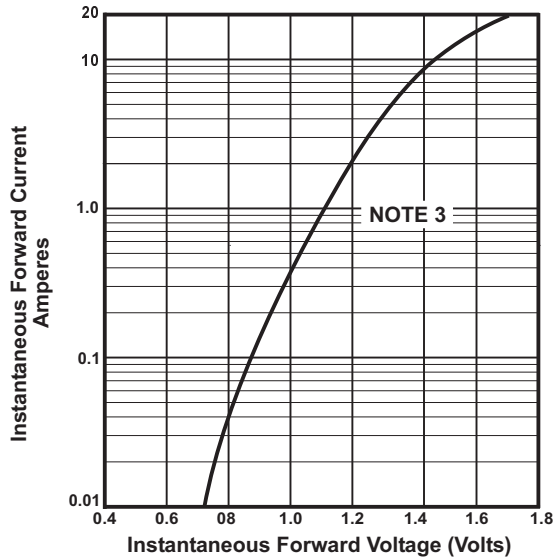


FIGURE 3. TYPICAL FORWARD CHARACTERISTIC PER DIODE

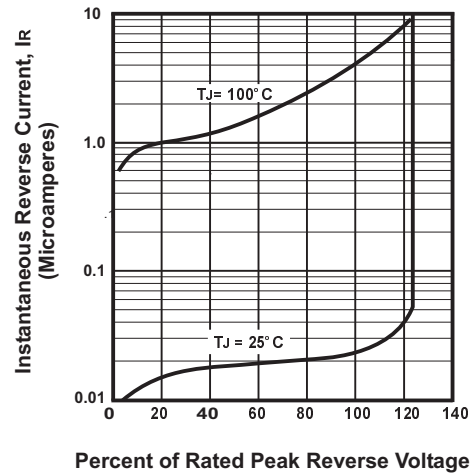


FIGURE 4. TYPICAL REVERSE CHARACTERISTICS

NOTES

- (1) Bridge Mounted on PC Board With 0.2" Sq. (5.5mm Sq.) Copper Pads And Bridge Lead Length of 0.375" (9.5mm)
- (2) 8.3ms Single Half Sine - Wave (JEDEC Method) $T_J = 125^\circ\text{C}$
- (3) $T_J = 25^\circ\text{C}$; Pulse Width = 300 μSec , 1% Duty Cycle