

Open Frame

15" Open Frame LCD Monitor

Model Number: OF-15.0-VGA

The OF-15-VGA "all-in-one" open frame LCD monitor makes integration into your new or existing application easy. The unit comes completely assembled with a color TFT LCD, controller board (VGA only), on-system display button board, backlight driver board, all the necessary cables, integrated with a sheet metal bracket and is ready for installation.

Commercial and industrial applications include: ATM machines, industrial equipment, instrumentation, kiosks, military, medical, arcade games, marine, security, test equipment, gaming, or any application requiring a color LCD display.

Features:

- 15" SVGA LCD panel with CCFL backlight
- VGA only input controller card
- Commercial and industrial applications
- 0°C ~ +60°C operating temperature range
- Contrast ratio: 350:1 typical
- 350 cd/m2 Brightness typical
- 20,000 hours LED life typical
- OSD Controls: contrast, phase, clock, color, H&V position, auto-tune, recall
- +12 volt power

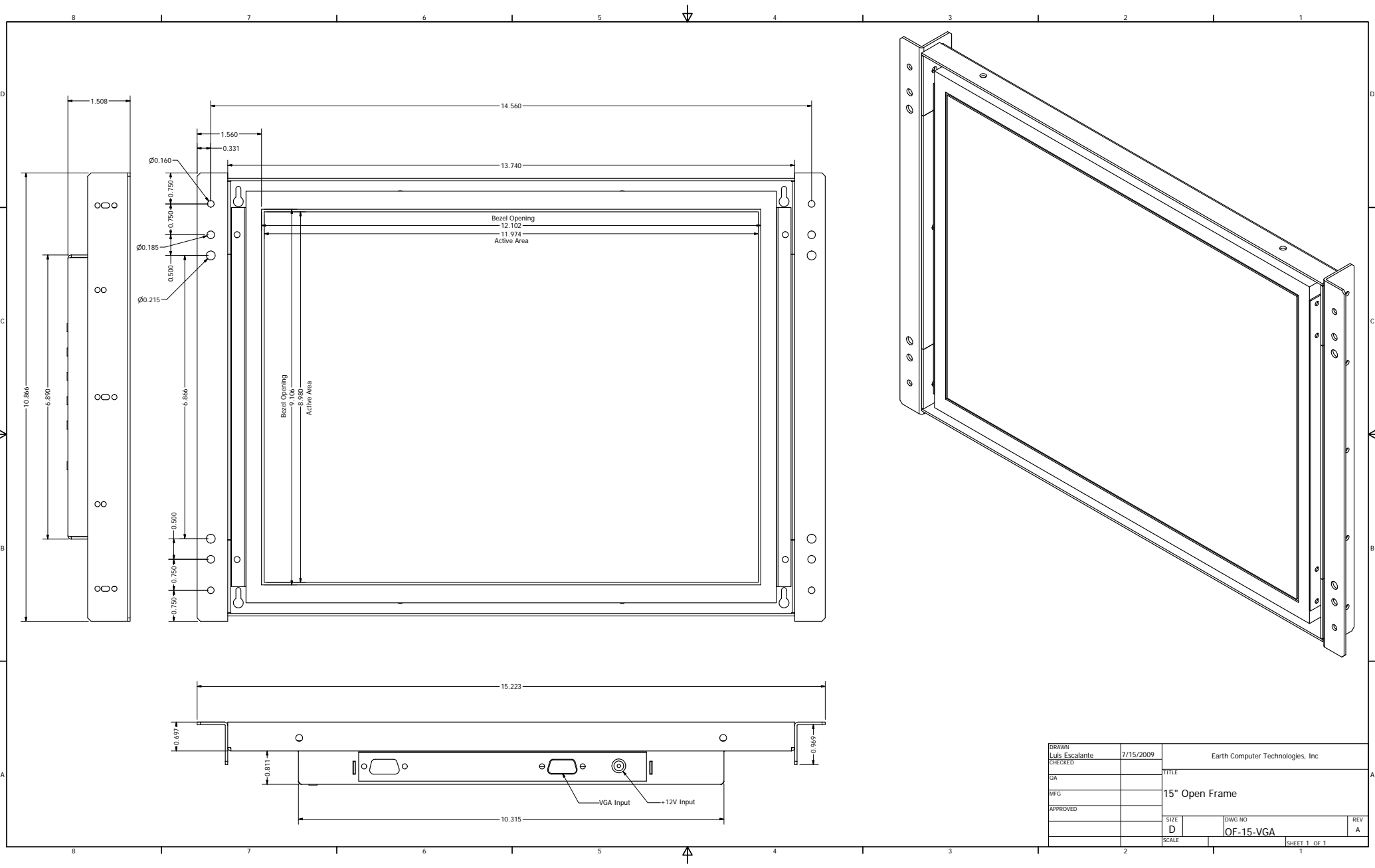
Options:

- AC/DC 12V power adapter, universal 100-240 volts (sold separately)
- Combo USB or RS232 four wire resistive touchscreen (sold separately)



Product Specifications:

Screen Size (Diagonal):	15 Inches
Display Technology:	TFT, CCFL
Resolution:	1024 x 768 (XGA)
Brightness:	350 Nits
Interface Input Modes:	VGA
Colors:	16 million
Active Area:	304.13 (W) x 228.09 (H) mm
Contrast Ratio:	350:1
Horizontal Viewing Angle:	80° L/R
Vertical Viewing Angle:	55° (top) 80° (bottom)
Operating Temperature:	0°C to 60°C
Storage Temperature:	-25°C to 60°C
Input Voltage:	+12V DC
Power Consumption:	1300 mA
Display Backlight:	CCFL
RoHS Compliant:	Yes
Outline Dimensions (mm):	386.66 (W) x 275.99 (H)
Outline Dimensions (in):	15.22 x 10.87
Cable Included:	6 ft VGA
Touch Screen Available:	Yes
Industrial Enclosure Available:	Yes



Bezel Opening
 12.102
 11.974
 Active Area

Bezel Opening
 9.106
 8.980
 Active Area

VGA Input
 +12V Input

DRAWN Luis Escalante	7/15/2009	Earth Computer Technologies, Inc	
CHECKED		TITLE	
QA		15" Open Frame	
MFG			
APPROVED			
SCALE	D	DWG NO OF-15-VGA	REV A
		SHEET 1 OF 1	