

Properly and quickly assemble pipe joints each and every time. Improper installation and over-insertion can contribute to the build up of damaging stresses in pipe joints. The MEGA-STOP is a safe and economical “over-insertion” solution.

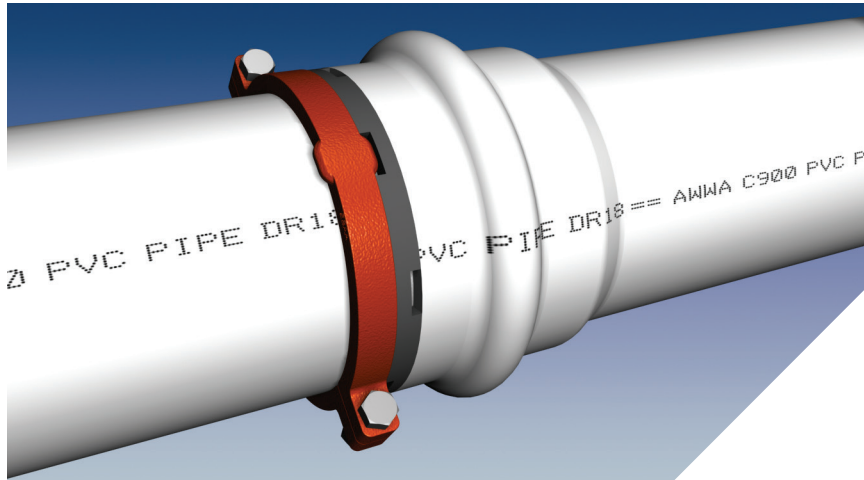


Image depicts 8 inch MEGA-STOP Bell Stop on 8 inch AWWA C900 PVC pipe.

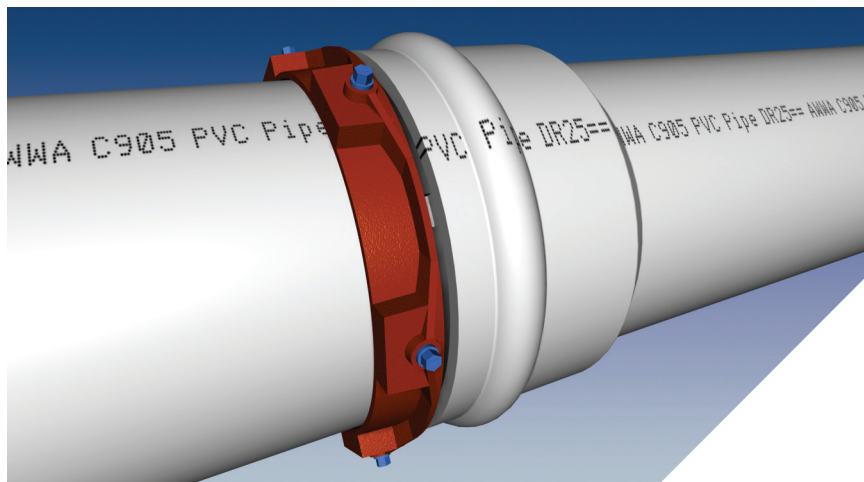


Image depicts 16 inch MEGA-STOP Bell Stop on 16 inch AWWA C905 PVC pipe. Twist-Off Nuts shown.

#### Features and Applications:

- Allows for expansion/contraction of the pipe and permitted joint deflection with the exclusive Expansion Retention Spring—ERS
- Proper use assures assembly of every PVC joint in compliance with the pipe manufacturer's installation recommendations and requirements
- Easy to install in the field
- Eliminates “lost” pipe resulting from over-insertion\*
- Constructed of Traceable ASTM A536 Ductile Iron
- MEGA-BOND® Restraint Coating System
- For use on the pipe spigot at a C900/C905 PVC Pipe or C907 PVC fitting bell
- **Conventional Open Cut Installation**
  - Facilitates quick, accurate, and proper assembly of PVC pipe joints
  - Simple, visual inspection of the assembled joint
  - Protects previously assembled joints\*\*
- **Casing Installation**
  - Prevents over-insertion when pushing pipe through casings. The push load must be limited to the listed maximum rated push load
  - Maintains the ability of the pipe to expand and contract in response to changes in temperature and/or soil movement
- **Horizontal Directional Drilling Installation**
  - Optimal for short HDD applications such as road crossings and locations with frequent fitting requirements
  - Use of standard bell and spigot pipe saves money compared to specialty pipe joints
  - Does not require an extended entry pit or staging area typical of fused piping
  - Accommodates the need for multiple fittings in congested areas

\*An over-inserted pipe joint can have a laying length that is more than two inches shorter than specified. In a pipeline of 25,000 feet that would result in a reduction of at least 208 feet or a loss of more than 10 pieces of pipe.

\*\*The peak force required to assemble a push-on joint can cause previously assembled joints to be over-inserted unless measures are taken to prevent over-insertion.

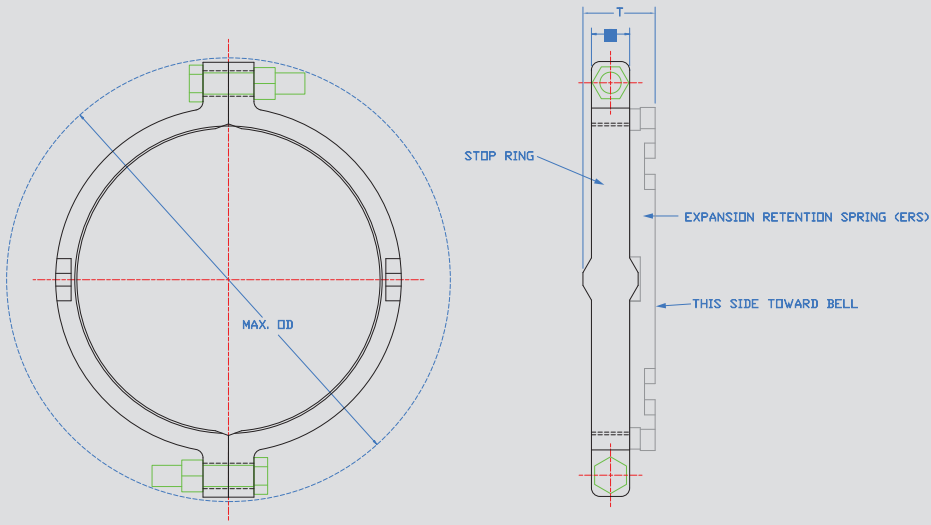
Nominal Pipe Size	Series Number	Approximate Weight (lbs)	Rated “Push” Load (Max. lbf)
4	5004	3.5	10,000
6	5006	6.5	10,000
8	5008	8.0	10,000
10	5010	11.5	10,000
12	5012	15.5	10,000
14	5014	Call for Availability	
16	5016	28.6	15,000
18	5018	Call for Availability	
20	5020	Call for Availability	
24	5024	Call for Availability	

NOTE: For applications or loads other than those shown, please contact EBAA for assistance.

# Series 5000 4 - 12 inch Submittal Reference Drawing

EBAA IRON

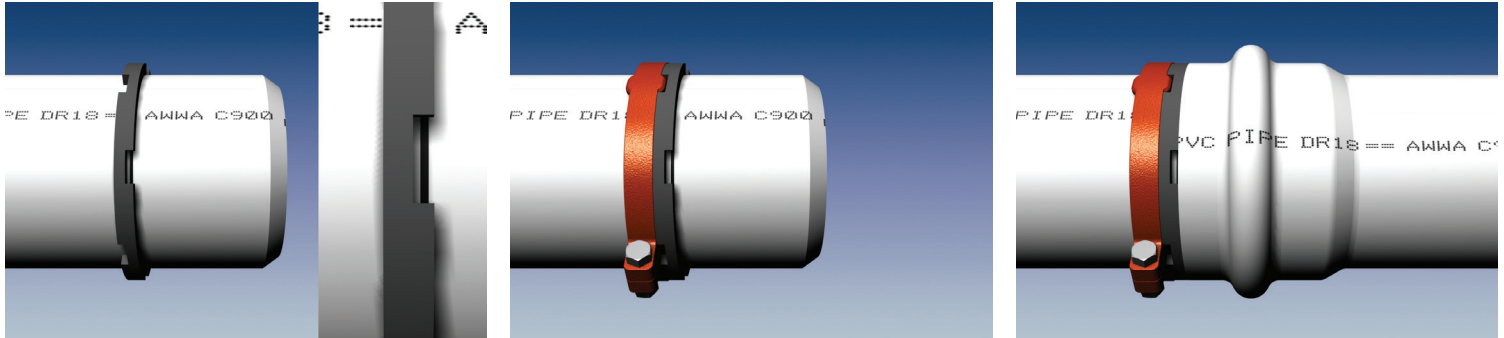
MADE IN USA



Nominal Pipe Size	Series Number	Push Load (lbs)	Maximum O.D.	C	T	Bolt (Qty - Size)
4	5004	10,000	9.2	1.13	1.88	2 - 5/8 x 3
6	5006	10,000	11.1	1.13	1.88	2 - 5/8 x 3
8	5008	10,000	13.1	1.13	1.88	2 - 5/8 x 3
10	5010	10,000	15.7	1.13	1.88	2 - 5/8 x 3 1/2
12	5012	10,000	18.3	1.13	1.88	2 - 5/8 x 3 1/2

NOTE: Dimensions are in inches (± 1%) and are subject to change without notice.

## Installation Instructions

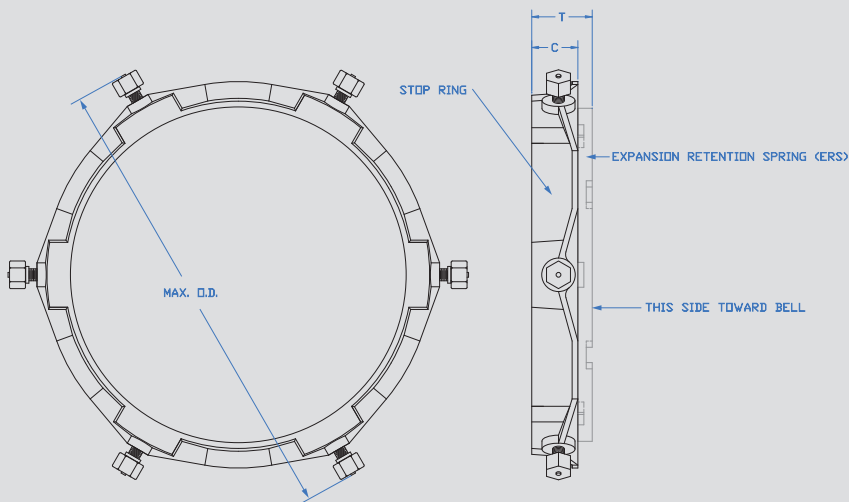


The Series 5000 MEGA-STOP Bell Protection System is designed to prevent over-insertion of the spigot or plain end of the pipe into a push-on pipe bell, while allowing the pipe to properly expand or contract. The Series 5000 MEGA-STOP is used on AWWA C900 PVC Pipe, and consists of one split serrated MEGA-STOP Bell Stop Ring and one Expansion Retention Spring (ERS).

1. Place the Expansion Retention Spring (ERS) on the spigot and position it so that the manufacturer's reference mark is visible through the front notches. If the mark is missing due to fading or a cut pipe, place a mark at the pipe manufacturer's recommended measurement, chamfering the pipe may also be recommended by the pipe manufacturer. (The ERS is bi-directional. Once placed on pipe the notches nearest the pipe chamfer are the front notches.)
2. Disassemble the halves of the MEGA-STOP and reassemble them on the spigot against the back side of the ERS with the extensions of the MEGA-STOP inside of the notches on the back side of the ERS. Tighten the side bolts evenly to a torque of 70 ft-lbs.
3. Assemble the joint in accordance with the pipe or fitting manufacturer's installation instructions.

EBAA IRON

MADE IN USA

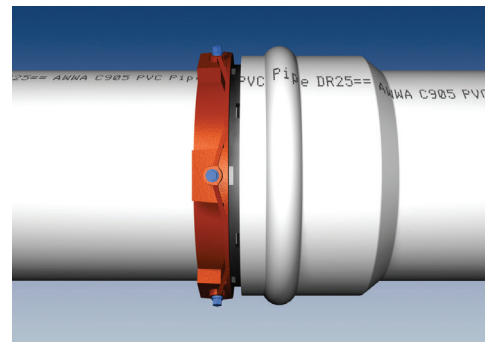
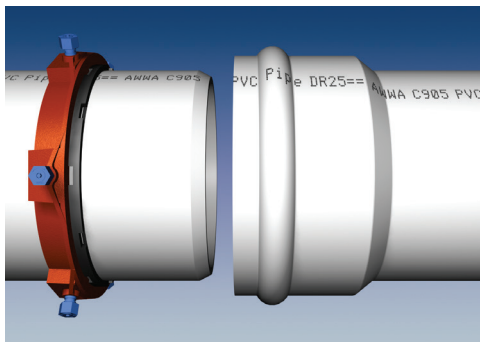
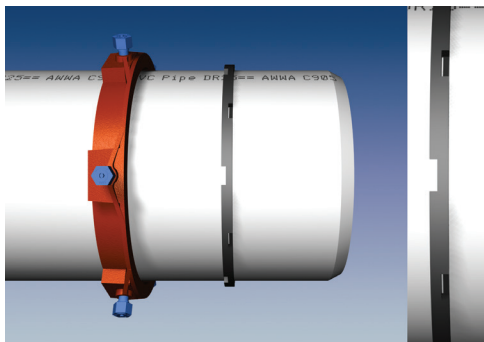


Nominal Pipe Size	Series Number	Push Load (lbs)	Maximum O.D. w/ Nuts Twisted Off	C	T	Wedge Count
14	5014*	15,000	20.9	2.4	3.15	5
16	5016	15,000	23.0	2.4	3.15	6
18	5018*	15,000	25.1	2.4	3.15	6
20	5020*	15,000	27.2	2.4	3.15	7
24	5024*	15,000	31.5	2.4	3.15	8

\*Call for Availability

NOTE: Dimensions are in inches (± 1%) and are subject to change without notice.

### Installation Instructions



The Series 5000 MEGA-STOP Bell Protection System is designed to prevent over-insertion of the spigot or plain end of the pipe into a push-on pipe bell, while allowing the pipe to properly expand or contract. The Series 5000 MEGA-STOP is used on AWWA C905 PVC Pipe, and consists of one wedge-style MEGA-STOP Bell Stop Ring and one Expansion Retention Spring (ERS).

- Place the Mega-Stop stop ring on spigot with the flange of the ring facing the bevelled end of the spigot. The flange is marked with "This side towards bell".
- Place the Expansion Retention Spring (ERS) on the spigot and position it so that the manufacturer's reference mark is visible through the front notches. If the mark is missing due to fading or a cut pipe, place a mark at the pipe manufacturer's recommended measurement, chamfering the pipe may also be recommended by the pipe manufacturer. (The ERS is bi-directional. Once placed on pipe the notches nearest the pipe chamfer are the front notches
- Slide the Mega-Stop Stop Ring toward back side of the ERS until the flange of the stop ring is fully contacting the ERS.
- Tighten the torque limiting twist-off nuts in a clockwise direction (direction indicated by arrow on top of the nut) until all wedges are in firm contact with the pipe surface. Continue tightening in an alternating manner until all of the nuts have been twisted off.
- Assemble the joint in accordance with the pipe or fitting manufacturer's installation instructions

### Sample Specification

Devices for the prevention of “over-insertion” of AWWA C900/C905 PVC Pipe spigots or plain ends into push-on bell joints shall consist of the following: The bell stop shall be manufactured of ductile iron conforming to ASTM A536. The bell stop shall be coated using MEGA-BOND® (For complete specifications on MEGA-BOND visit [www.ebaa.com](http://www.ebaa.com).) The device shall incorporate a Expansion Retention Spring allowing compensation for expansion and contraction of the pipe, along with visual inspection viewports of the PVC pipe insertion reference mark. The combination of the two shall be the Series 5000 MEGA-STOP® Bell Protection System, as manufactured by EBAA Iron, Inc.



**EBAA IRON Sales, Inc.**  
P.O. Box 857, Eastland, TX 76448  
Tel: (254) 629-1731  
Fax: (254) 629-8931  
(800) 433-1716 within US and Canada  
[contact@ebaa.com](mailto:contact@ebaa.com)  
[www.ebaa.com](http://www.ebaa.com)