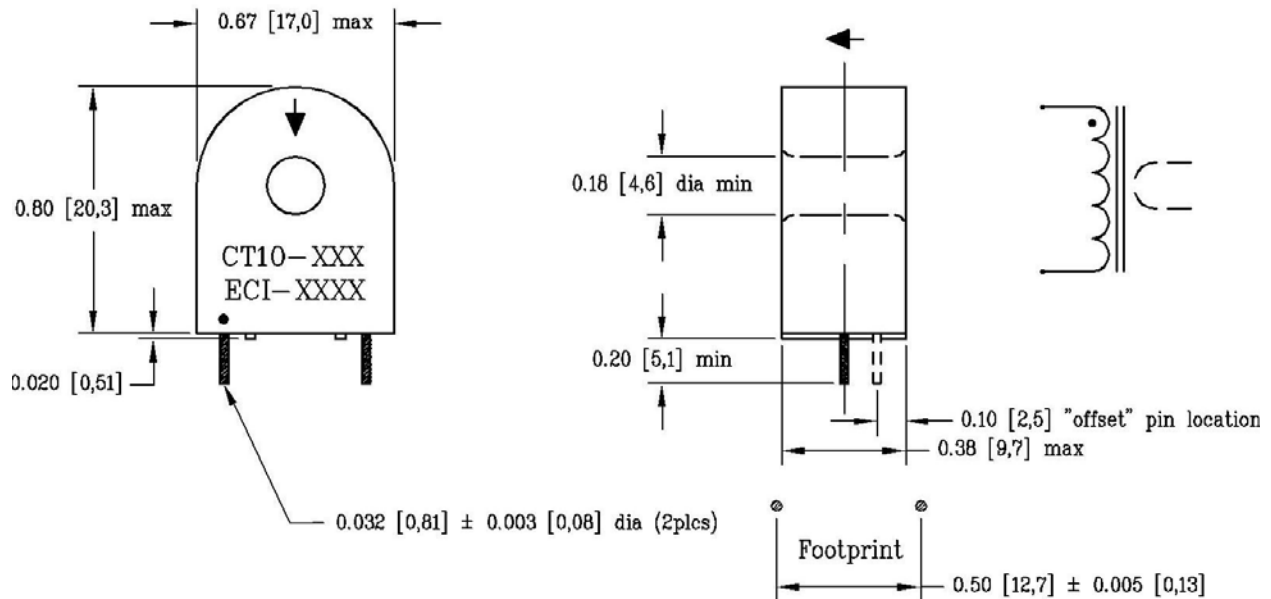


CT10-XXX

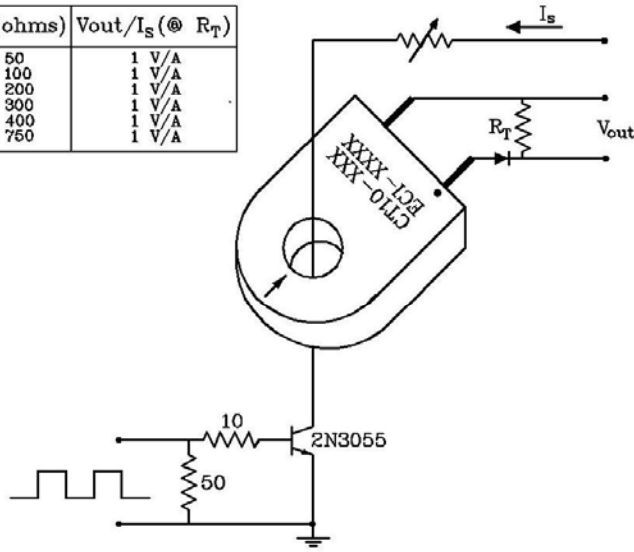
Current Sensor

- CT10-XXXA for the offset pin location
- Molded case meets UL94 V-0
- Dielectric strength, 3000Vrms primary to secondary
- 0.020 [0,51] minimum wall thickness throughout device
- Temperature class, 130 °C
- Inductance test level, 10kHz @ 100mV
- Secondary turns tolerance $\pm 2\%$
- Electrical characteristics based on 1T primary @ 25 °C @ R_T
- “Primary” winding not included
- RoHS compliant per 2002/95/EC



Dash #	"N" (Turns)	"L" min (mH)	"DCR" max (Ω)	"I" peak max (Amps)	"I-T" max Bipolar (A- μ Sec)	"R _T " ref (Ω)
-050	50	5	0.7	10	300	50
-100	100	20	1.4	24	600	100
-200	200	80	4.5	35	1200	200
-300	300	180	8.0	45	1800	300
-400	400	320	13.0	40	2400	400
-750	750	1125	55.0	30	4500	750

DASH #	R_T (ohms)	V_{out}/I_s (@ R_T)
-050	50	1 V/A
-100	100	1 V/A
-200	200	1 V/A
-300	300	1 V/A
-400	400	1 V/A
-750	750	1 V/A



TYPICAL APPLICATION CIRCUIT

