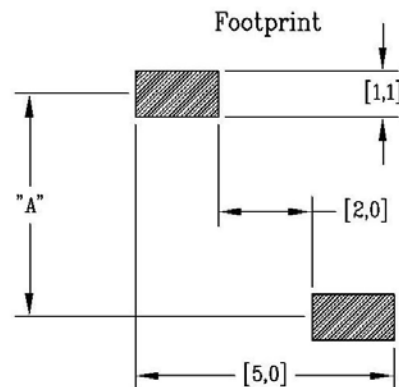
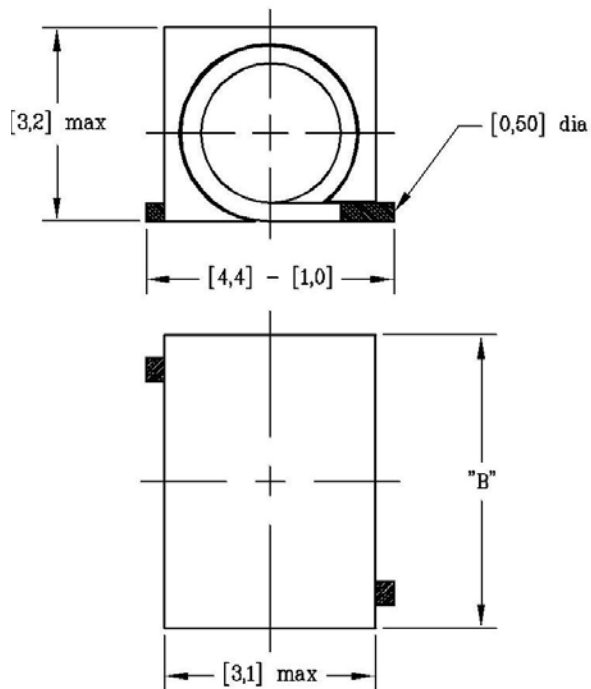


SML1-XXXX

Air-core, SMT inductor

- Compact design
- High “Q”
- Inductance tested at 10MHz
- Removable “pick & place” cap for auto insertion
- Temperature range, -40 °C to 125 °C
- Soldering temperature 230 °C, 5 seconds
- RoHS compliant per 2002/95/EC
- Packaging, 12mm blisterpack



Dash #	“L” (nH)	Tol. (%)	“SRF” min (GHz)	“DCR” max (mΩ)	“Q” typ	@ “F” (MHz)	“A” [mm]	“B” [mm]	Turns (#)
-0005	5.3	10 %	3.0	1.5	100	250	2.9	3.7	2
-0009	9.0	10 %	3.0	2.0	115	250	2.9	3.7	3
-0014	14.0	10 %	3.0	2.5	120	250	2.9	3.7	4
-0018	18.5	5 %	2.9	3.5	125	200	5.9	7.1	6
-0019	19.2	5 %	3.0	3.0	120	250	2.9	3.7	5
-0025	25.2	5 %	2.6	4.0	125	200	5.9	7.1	7
-0031	30.8	5 %	2.3	5.0	120	200	5.9	7.1	8
-0037	37.4	5 %	2.0	5.5	120	200	5.9	7.1	9
-0043	43.0	5 %	1.7	6.0	115	200	5.9	7.1	10