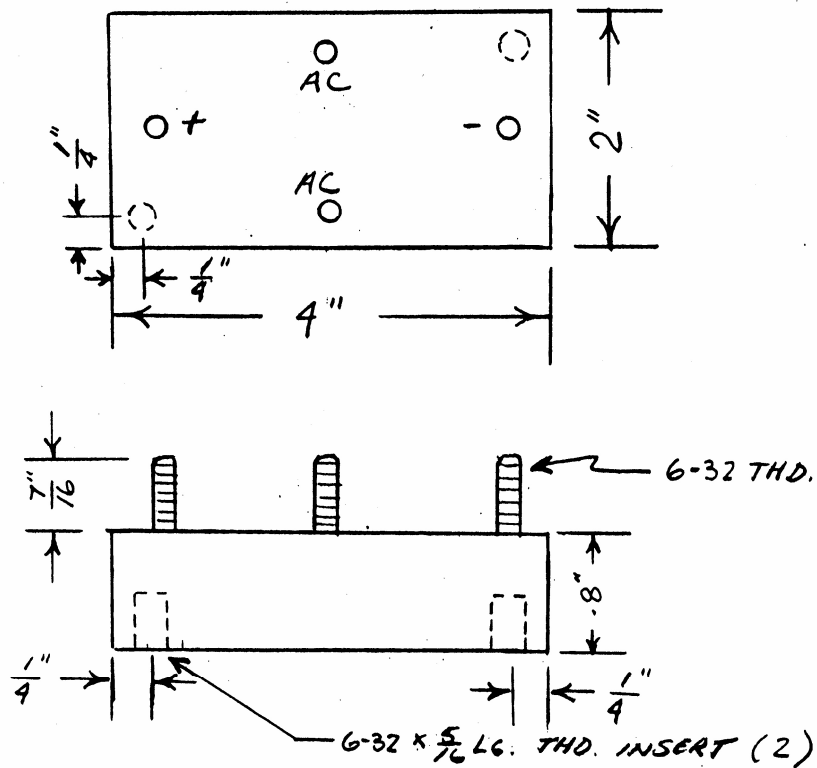


Silicon Full Wave Bridge Rectifier

**ELECTRICAL RATINGS**

PEAK INVERSE VOLTAGE	7 KV
MAXIMUM FULL WAVE OUTPUT CURRENT @ 25° C	3 AMPS
MAXIMUM REVERSE LEAKAGE @ PIV @ 25° C	10 u AMPS
MAXIMUM FORWARD VOLTAGE DROP/SECTION @ 3 AMPS	7 VOLTS
DIELECTRIC TEST: 7KV AC TERMINAL TO GROUND	

(203) 467-2591 TEL
 (203) 469-5928 FAX
 Email: Info@ edal.com
 Internet: http://www.edal.com

EDAL industries, inc.

51 Commerce St. East Haven, CT 06512