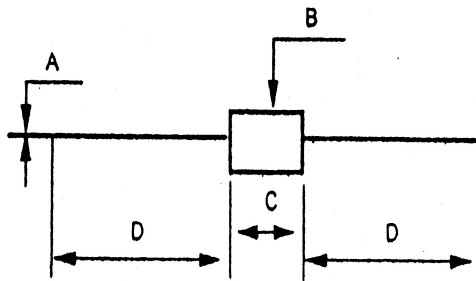


SILICON GENERAL PURPOSE 6.0 AMP DIODES



DIM.	INCHES	
	MIN.	MAX.
A	0.047	0.053
B	0.362	0.389
C	0.362	0.389
D	.750	

I_o 6 Amp @ 50 C

I_s 400 AMPS

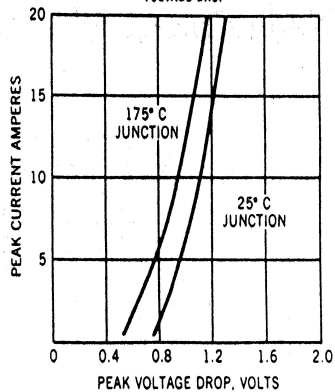
V_f 1.0 max V @ 6 AMP @ 25 C

I_r 25 uA max @ PIV @ 25 C

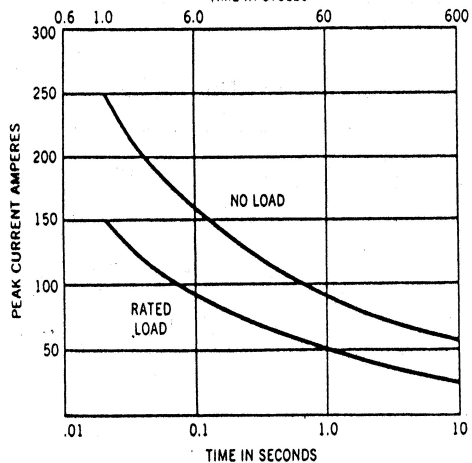
PIV (VOLTS)	P/N
50	M7A5
100	M7B5
200	M7C5
300	M7D5
400	M7E5
500	M7F5
600	M7G5
700	M7H5
800	M7K5
1000	M7M5
1200	M7N5
1500	M7P5

(203) 467-2591 TEL
 (203) 469-5928 FAX
 Email: Info@edal.com
 Internet: http://www.edal.com

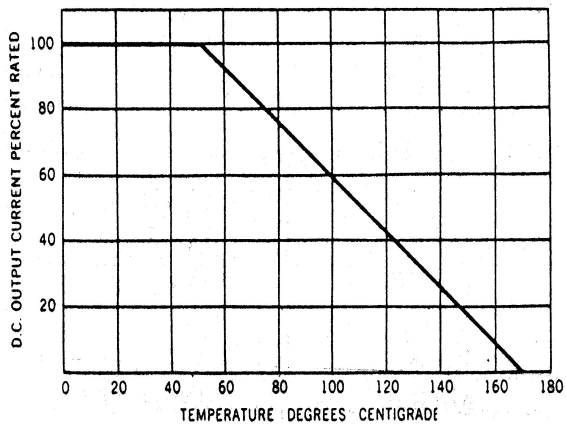
PEAK FORWARD CURRENT VS PEAK FORWARD VOLTAGE DROP



SURGE CURRENT RATING
TIME IN CYCLES



CURRENT VS. TEMPERATURE



(203) 467-2591 TEL
 (203) 469-5928 FAX
 Email: Info@edal.com
 Internet: <http://www.edal.com>

EDAL industries, inc.
 51 Commerce St. East Haven, CT 06512