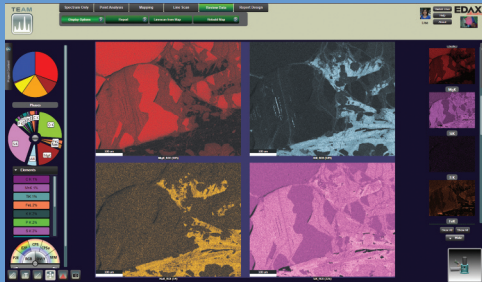
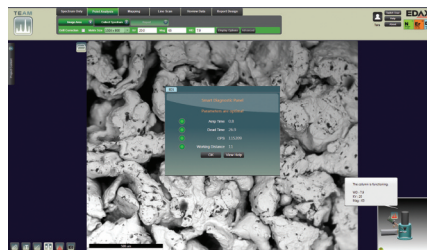


TEAM™ EDS Analysis System

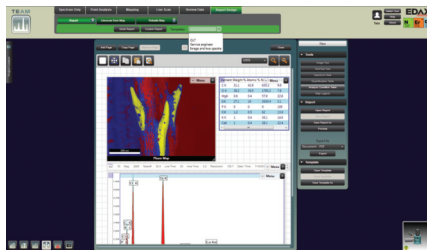


- Intuitive and easy to use TEAM™ software
- Smart features ensure consistent data collection, analysis and reporting regardless of the experience level of the operator
- Boosts user productivity and reduces analysis time
- Dynamic reporting with user defined templates

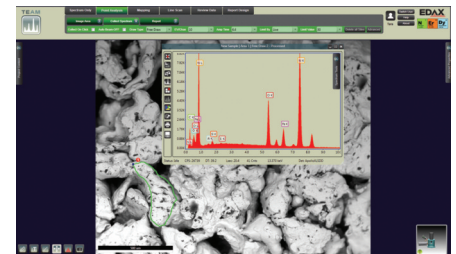
TEAM™ EDS Analysis System blends powerful elemental analysis routines with an intuitive, easy to use interface that ensures ideal data collection, analysis, and reporting for users of all levels. Smart Features in the TEAM™ software streamline analysis and facilitate workflow, while optimizing data quality and helping EDAX users solve their characterization problems quickly and more efficiently.



Startup



Reporting



Analysis

Ease of Use

- Three click workflow from the start of analysis to the final report
- Smart Features to optimize system setup, data collection and analysis, and reporting
- User profiles with customizable preferences and settings
- Full access to and control of advanced level user settings

Smart Features

- Smart Diagnostics - to ensure the best data in the shortest time, detector and microscope conditions are constantly monitored to provide guidance on setup and collection of EDS data
- EXpert ID - analytical intelligence combines traditional peak ID routines with real world analysis techniques to provide the most accurate qualitative analysis on the market
- Smart Mapping - automatically collects a preview spectrum, selects the elements to map and creates phases based on the combination of elements being measured
- Smart Data Management - intuitive and flexible data management system keeps work session organized

Specifications

TEAM™ EDS Software Suite

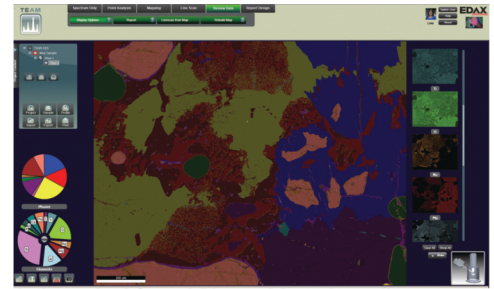
- Smart Diagnostics
- Smart Acquisition
- EXpert ID
- Smart Mapping
- Smart Data Management
- Smart Pulse Pile-Up Correction

EDS Detectors

- Octane Pro, Plus, Super, Ultra
- Resolutions down to 121 eV
- Resolution stability >90% up to 200 kcps
- Count rates up to 1.6 Mcps with throughput rates of 800 kcps
- SDD modules up to 100 mm²

Smart Phase Mapping

- No user setup required
- Automatically collects spectra, elemental and phase maps
- Dynamically displays various maps
 - Phase to element
 - Element to phase
 - Counts per second (CPS)
- Extracts and quantifies spectra from user defined regions



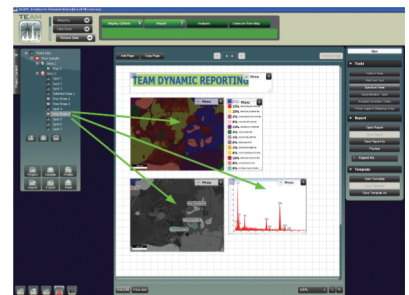
Automated Smart Phase Mapping allows interactive review of phase, CPS and elemental maps during collection.

Advanced Analysis Tools

- EXpert ID identifies possible trace elements, improves low kV accuracy and resolves spectral overlaps
- Unique Halographic Peak Deconvolution (HPD) confirms peak identification
- Smart Pulse Pile-Up correction prevents artifact peaks from becoming a problem at high count rates

Reporting

- Organize and communicate results efficiently with TEAM™ Reporting in standard Microsoft Office suite documents and Adobe PDF
- Quick Reports allow the user to tailor report content and layout to specific analytical needs
- Customizable analysis templates for advanced and interactive EDS reports



Dynamic Reporting.

Conclusion

Ease of use is at the core of the TEAM™ EDS Analysis System. Built-in analytical intelligence assists the user as needed, offering maximum flexibility. Results are easy to obtain, analyze, and present. Regardless of the experience level of the user, TEAM™ EDS provides exceptional results every time.