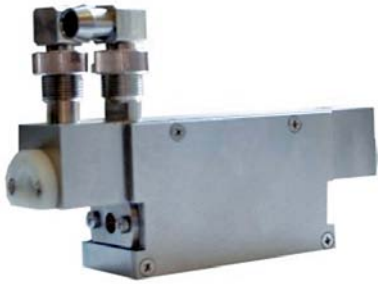


## NL301 PUMP CHAMBER



### FEATURES

- One FL type flashlamp for active element pumping
- O-ring type seals for flashlamp and active element
- Close coupling design for high pumping efficiency
- Diffuse high efficiency ceramics reflectors
- Active element – flashlamp sequential cooling scheme
- Sm-glass plate for removal of UV radiation
- Connectors for high voltage wires included
- Connectors for water hoses ( 9 (ID) × 12(OD) ) included
- Typical efficiency (for 6 ns pulses at 1064 nm) approx. 1%

### SPECIFICATIONS

Model	NL301-58-4	NL301-58-6.3
Active element dimensions	Ø4 × 85 mm	Ø6.3 × 85 mm

*Specifications are subject to changes without advance notice.*

