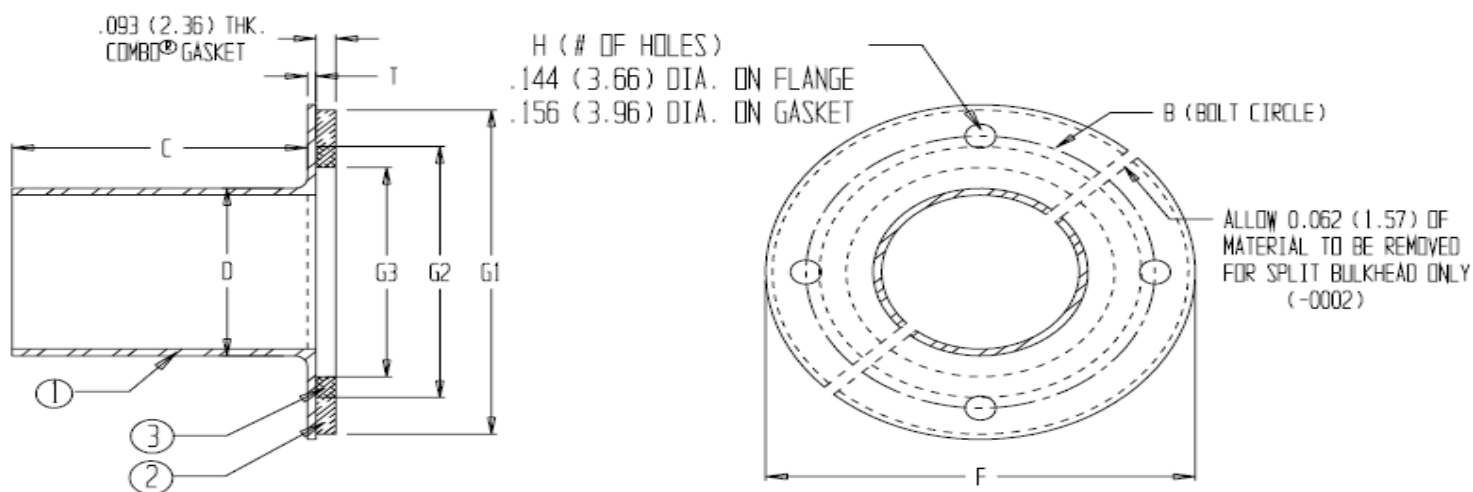


Bulkhead Dimensions - Inches (mm)

Part Number	D (DIA.)	F (DIA.)	B (DIA.)	T	H	G1 (DIA.)	G2 (DIA.)	G3 (DIA.)	C
15-6004-0001	1.00 (25.4)	2.000 (50.80)	1.625 (41.28)	0.040 (1.02)	4	1.937 (49.20)	1.500 (38.1)	1.250 (31.75)	1.375 (34.93)
15-6006-0001	1.50 (38.1)	2.625 (66.68)	2.250 (57.15)	0.040 (1.02)	4	2.562 (65.07)	2.000 (50.8)	1.750 (44.45)	1.375 (34.93)
15-6008-0001	2.00 (50.8)	3.125 (79.38)	2.750 (69.85)	0.040 (1.02)	4	3.062 (77.77)	2.500 (63.5)	2.250 (57.15)	1.375 (34.93)
15-6010-0001	2.50 (63.5)	3.625 (92.08)	3.250 (82.55)	0.040 (1.02)	4	3.562 (90.47)	3.000 (76.2)	2.750 (69.85)	1.375 (34.93)
15-6012-0001	3.00 (76.2)	4.125 (104.78)	3.750 (95.25)	0.040 (1.02)	4	4.062 (103.17)	3.500 (88.9)	3.250 (82.55)	1.375 (34.93)
15-6014-0001	3.50 (88.9)	4.625 (117.48)	4.250 (107.95)	0.060 (1.52)	4	4.562 (115.87)	4.000 (101.6)	3.750 (95.25)	1.375 (34.93)
15-6016-0001	4.00 (101.6)	5.125 (130.18)	4.750 (120.65)	0.060 (1.52)	6	5.062 (128.57)	4.500 (114.3)	4.250 (107.95)	1.375 (34.93)
15-6020-0001	5.00 (127.0)	6.125 (155.58)	5.750 (133.35)	0.060 (1.52)	6	6.062 (153.97)	5.500 (139.7)	5.250 (133.35)	1.375 (34.93)
15-6024-0001	6.00 (152.4)	7.125 (180.98)	6.750 (145.05)	0.060 (1.52)	8	7.062 (179.37)	6.500 (165.1)	6.250 (158.75)	1.375 (34.93)

Tolerances: X.XX ± 0.03" (0.76mm), X.XXX ± 0.015" (0.38mm)



MATERIAL:

1. SAE 1018 STEEL, TIN PLATE PER ASTM B-545 CLASS C
2. NEOPRENE SPONGE PER ASTM D-6576
3. FERREX® WIRE PER ASTM B-520

This drawing and information contained hereon are the property of Chomerics, and must not be copied or disclosed either wholly or in part without written permission of Chomerics. This design/proposal is provided subject to Chomerics Offer of Sales Terms and Conditions, which are available on line at www.chomerics.com/salesterms/ or can be provided by your Chomerics representative.