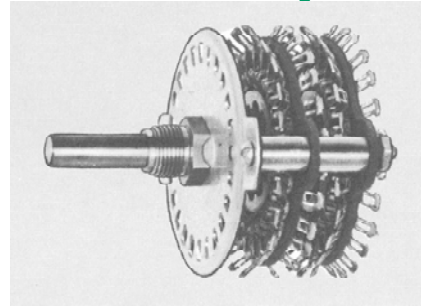
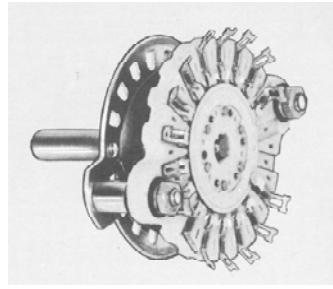
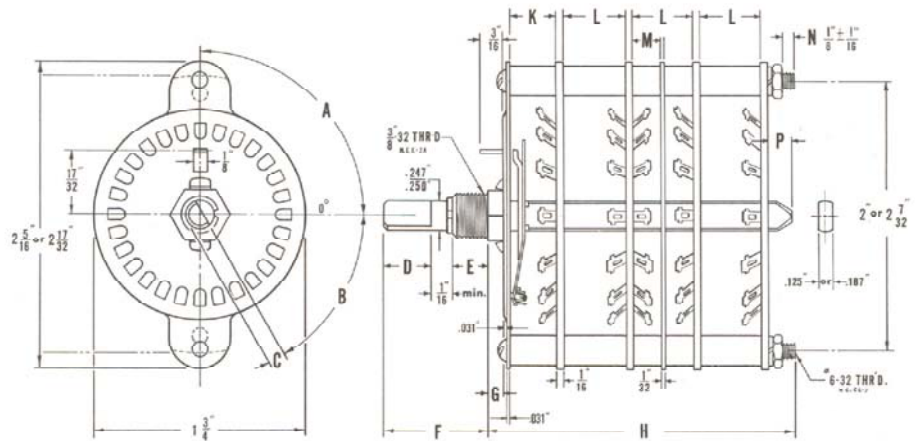


7M Type

7M type switches are ideally suited for instrument and special purpose uses or for heavy duty multi-circuit applications. The contact arrangement is similar to standard rotary switching in radial form. Several of the 7M types are available with either 2" or 2 7/32" strut centers (see illustrations below for those available in both sizes). Switches having 2 7/32" strut centers provide greater space at contact locations for component wiring. Those having 2" strut centers require 90° bent clip at contact locations in line with, and adjacent to, the strut centers.



7M Type Drawing



- A- Angle of locating Key 0°, 45°, 90°, 135°, 180°, 225°, 270°, 315°.
- B. Flat angle Per Customer Specification. Tolerance ±2°.
- C. Thickness of Flat Per Customer Specification. Tolerance ±.002".
- D. Flat length - Any, as Required. Tolerance ±1/64".
- E. Bushing Thread Length - Any, as Required. Standard 1/4" or 3/8".
- F. Shaft Length From Mounting Surface. Any, As Required. Tolerance ±1/32".
- G. Bushing Shoulder - Any, as Required. Standard 1/8". Tolerance ±.005".
- H. Maximum Overall Length Behind Mounting Surface. Per Customer Specification. Indicate if Important.
- K. Detent Spacer - Minimum 9/32" If No Contacts Are Used
- L. Spacers - Minimum 7/16" with Bent Contacts Opposed. Minimum 3/16" with No Contacts Opposed. Minimum 1/4" with Flat Contacts Opposed.
- M. On Front Side of Section. Minimum 5/16" With Contacts On Front Side of Section. Tolerance ±1/64".
- N. Spacer Between Electro-Static Shield and Section Minimum 1/8". Tolerance ±1/64". Shields May Be Located Where Desired.
- P. Shaft Extension - Any as Required. Standard 1/8".

Specifications

Size

2" or 2 7/32" diameter nominal

Mounting

Shaft

.250 diameter (+000 -.003)

Stator Insulation

Glass epoxy or Phenolic

Rotor Insulation

Glass epoxy or Phenolic

Section Thickness

.062 Phenolic

Contacts

Silver-plated brass or silver alloy.

Contact Resistance

.003 ohms between adjacent clips

Electrical Rating

.230A @ 115 VAC

1.5A @ 28 VDC

Contact Staking

Solder-lug clips are secured to the stator using Electroswitch's patented "T" slugs

Terminal Type Construction

"T" slug or Wedglock construction

7M Type Switch Assemblies

MAXIMUM SWITCHING PER SECTION					
Type	714 LR	718 LR	720 LR	724 LR	728 LR
	25.7° Index 14 positions	20° Index 18 positions	18° Index 20 positions	15° Index 24 positions	12.85° Index 28 pos.
Poles	2 to 14 Pos.	2 to 18 Pos.	2 to 20 Pos.	2 to 24 Pos.	27 Active Plus 1 (off)
1	2 to 14 Pos.	2 to 17 Pos.	2 to 19 Pos.	2 to 23 Pos.	2 to 13 Pos.
2	2 to 13 Pos.	2 to 17 Pos.	2 to 19 Pos.	2 to 23 Pos.	2 to 13 Pos.
3	2 to 6 Pos.	2 to 8 Pos.	2 to 9 Pos.	2 to 11 Pos.	2 to 8 Pos.
4	2 to 6 Pos.	2 to 8 Pos.	2 to 9 Pos.	2 to 11 Pos.	2 to 6 Pos.
5	2 to 3 Pos.	2 to 5 Pos.	2 to 5 Pos.	2 to 7 Pos.	2 to 4 Pos.
6	2 to 3 Pos.	2 to 5 Pos.	2 to 5 Pos.	2 to 7 Pos.	2 to 3 Pos.

7M Type Section

