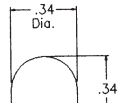


Schematic

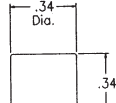


2 ()P20 Cap



Rubber Washer

2 ()P21 Cap



Rubber Washer

Materials and Finishes

Mounting tube, black glass filled nylon per MIL-M-19887. Mounting nut, aluminum, black anodized per MIL-A-8625A. Lockwasher, stainless steel or steel, nickel plate. Brass terminals, tin plated per MIL-T-10727A.

Cap Assembly

Lens, high impact-resistant plastic per L-P-349. Standard colors are transparent.

Lamp

T-1 sub-midget flange base.

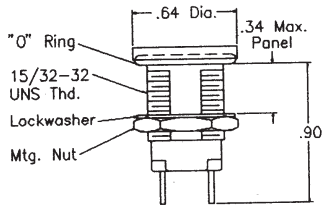
Mounting

Assembly mounts from front of panel. All mounting hardware supplied.

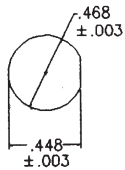
Weight

Approx. .12 oz. less lamp.

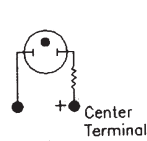
**95-33180 Type
Incandescent Subminiature
Size T-1**



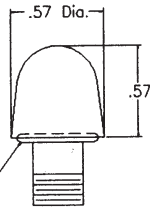
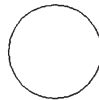
**Panel
Cutout**



Schematic



()P25 Cap
LC33



"O" Ring

Materials and Finishes

Mounting tube and nuts, aluminum, black anodized per MIL-A-8625A. Lockwasher, stainless steel or steel, nickel plate. Brass terminals, tin plated per MIL-T-10727A. "O" ring, silicone rubber.

Cap Assembly

Lens, high impact-resistant plastic per L-P-349. Standard colors are transparent.

Lamp

C7A (std.) or C9A (high brightness) T2 neon lamp is furnished with each assembly.

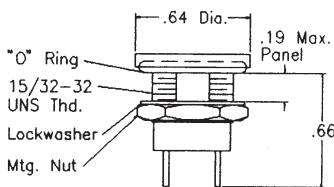
Mounting

Assembly mounts from front of panel. All mounting hardware supplied.

Weight

Approx. .3 oz. less lamp.

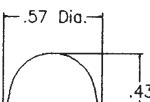
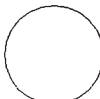
**31-36681 Type
w/68k Internal Resistor
31-36680 Type
w/27k Internal Resistor
Neon Miniature, T-2**



Schematic



()P24 Cap
LC35



"O" Ring

Materials and Finishes

Mounting tube, aluminum, black anodized per MIL-A-8625A. Mounting nut, steel cad plate per QQ-P-416. Lockwasher, stainless steel or steel, nickel plate. Brass terminals, tin plated per MIL-T-10727A. "O" ring, silicone rubber.

Cap Assembly

Lens, high impact-resistant plastic per L-P-349.

Lamp

T-1 3/4 midget flange base.

Mounting

Assembly mounts from front of panel. All mounting hardware supplied.

Weight

Approx. .3 oz. less lamp.

**11-35182 Type
Incandescent Miniature
Size T-1 3/4**



**VM-700 Type
Incandescent Vaportight
Size T-3 1/4**

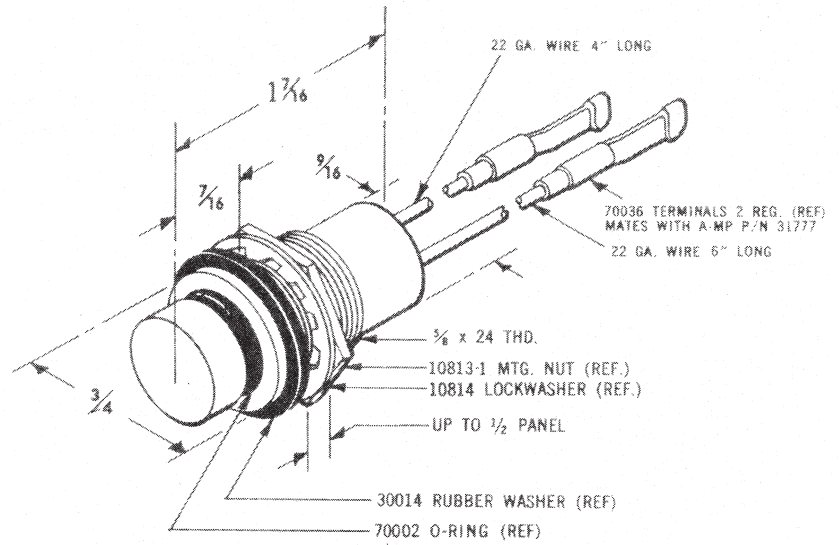


Cap
Transparent plastic with O-ring. If translucent cap is desired, add "TL" to final dash number

Base Assembly
Aluminum - standard finish is bright anodize

Light Assembly
Completely sealed and will withstand immersion in liquid

Weight
Approx. 1 oz., less lamp



**99-36980 Type
99-36982 Type
Incandescent Subminiature
Size T-1**



Material and Finishes
Mounting tube and nut, stainless steel, passivated per MIL-S-5002. Wire leads #26 GA silver coated, stranded copper with TFE-fluorocarbon insulation.

Lens Assembly
Lens, high impact-resistant plastic per L-P-393 (polycarbonate).

Lamp
MS24367-683 subminiature T-1 with 5.0V at .060 amp rating (non-replaceable).

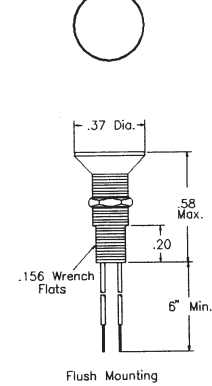
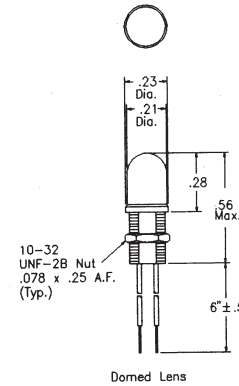
Mounting
Assembly mounts from front of panel. All mounting hardware supplied. E.M.I. suppressed assemblies require paint free area on back side of mounting for E.M.I. conductivity.

Weight
Approx. .005 lbs. max.

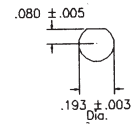
EMI Suppressed

98-36980
99-36980
LHC82 §

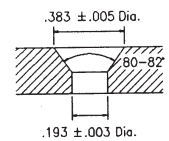
98-36982
99-36982
LHC84 §



Panel Cutouts



**Domed Lens
Flat Lens**



Flush Mounting