

# Series 3200

## Indicator Lights Push-to-Test Indicator Lights



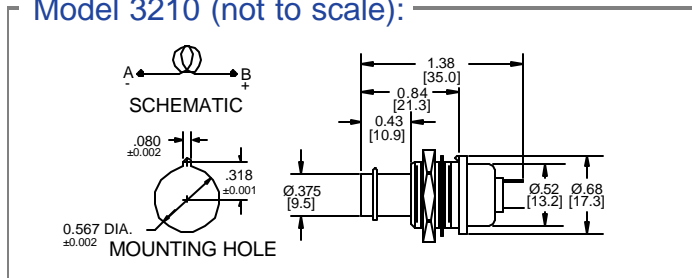
**ELECTRO-MECH**  
COMPONENTS



### Model 3210 Indicator

- \* Accomodates all standard EMC lenses.
- \* Lens accomodates one T 1-3/4 (5mm) M.F.B. lamp or LED.
- \* Sub panel mount with 9/16"-32 threaded neck.
- \* Mount to front panel with EMC Mounting Adapters.

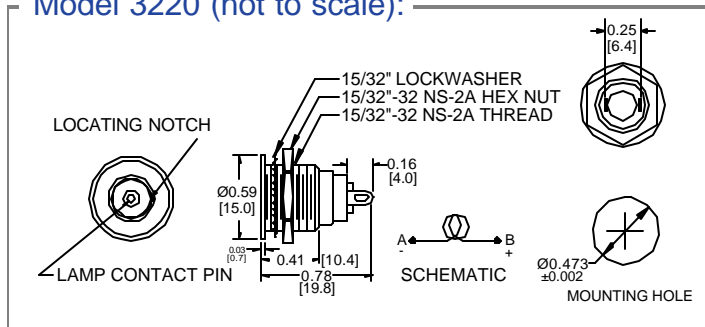
#### Model 3210 (not to scale):



### Model 3220 Indicator

- \* Accomodates all standard EMC lenses.
- \* Lens accomodates one T 1-3/4 (5mm) M.F.B. lamp or LED.
- \* Mount to front panel with 15/32"-32 threaded nut.

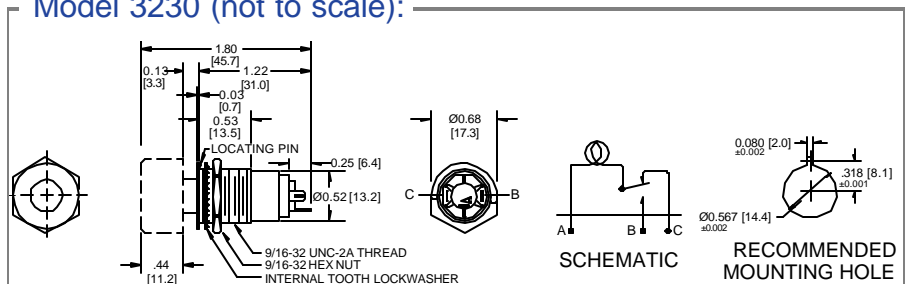
#### Model 3220 (not to scale):



### Model 3230 Push-to-Test Indicator

- \* Push-to-Test circuit option to test lamp or LED functionality.
- \* Accomodates all standard EMC lenses.
- \* Lens accomodates one T 1-3/4 (5mm) M.F.B. lamp or LED.
- \* Mount to front panel with 9/16"-32 threaded neck

#### Model 3230 (not to scale):



**electro-mech**