



SICMEMOTORI



AC asynchronous and synchronous motors, AC reluctance motors, DC motors, Wind generators & more

when tradition and innovation run together

Sicme Motori & Rockwell Automation

🚦 Official EMEA Encompass Partner



🚦 Product supplier Rockwell Automation



🚦 Motors/Generators Designed & Manufactured in Turin (Italy)

🚦 Rockwell Automation + Sicme Motori label



🚦 Elwood + Sicme Motori for North America



The Company



Sicme Motori is an Italian manufacturer of electric motors for industrial applications, founded in Turin (Italy) in 1967.

Over the years, the company has developed new technologies, expanding its products range and its geographical coverage.

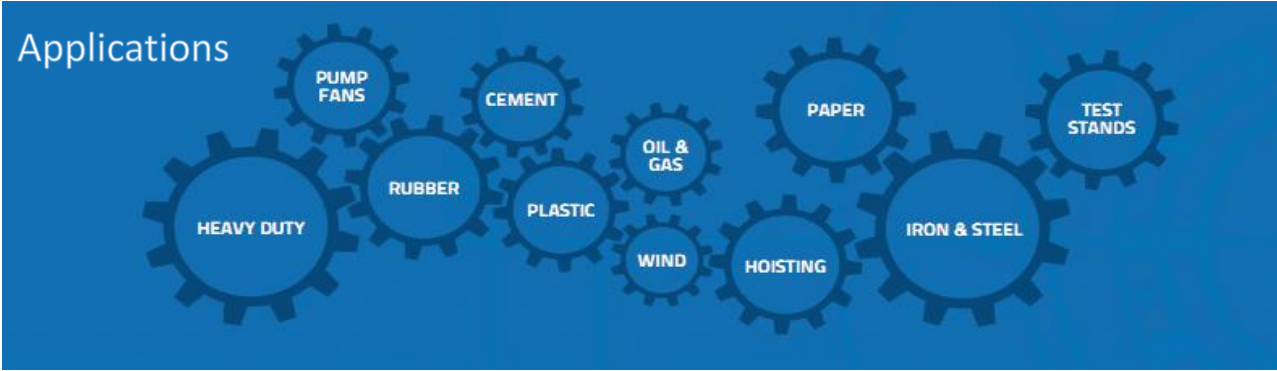
In 2008 the private equity fund Ersel Investment Club acquired 49% of the shares of the company through a LBO, in order to support the development of various new projects.

The company has two production facilities for the production of motors and generators, both located in Turin.

Most of company's products are customized and manufactured upon the client's order.



Industry Focus



- Electrical motors for the Machine Builders
- Customized products for OEMs
- Committed to the success of Rockwell Automation



Wide range of products

Variable speed drives

DC

motors & generators

☒ Square frame laminated

- Standard IEC
- AISE
- NEMA
- CSA

☒ Round frame

- ATEX

AC

motors & generators

ASYNCHRONOUS

SYNCHRONOUS

☒ Square frame laminated

- For variable speed duty, inverter application
- Standard IEC/UL/cUL
- Liquid cooled
- Low inertia

☒ Square frame laminated and round frame (PM)

- Standard IEC
- Low inertia
- Marine propulsion
- **Super premium IE4 efficiency**

☒ Square frame laminated and round frame (synchronous reluctance)

- Reluctance technology, no magnets
- IPM option
- **Super premium IE4 efficiency**

☒ Mini and multi MW direct drive generators for renewable energy

Test rooms

AC up to 3,5 MW low voltage
up to 1 MW medium voltage (6,6 kV)

DC up to 2,7 MW low voltage
up to 2 MW medium voltage (> 1 kV)



Encompass Partner Products

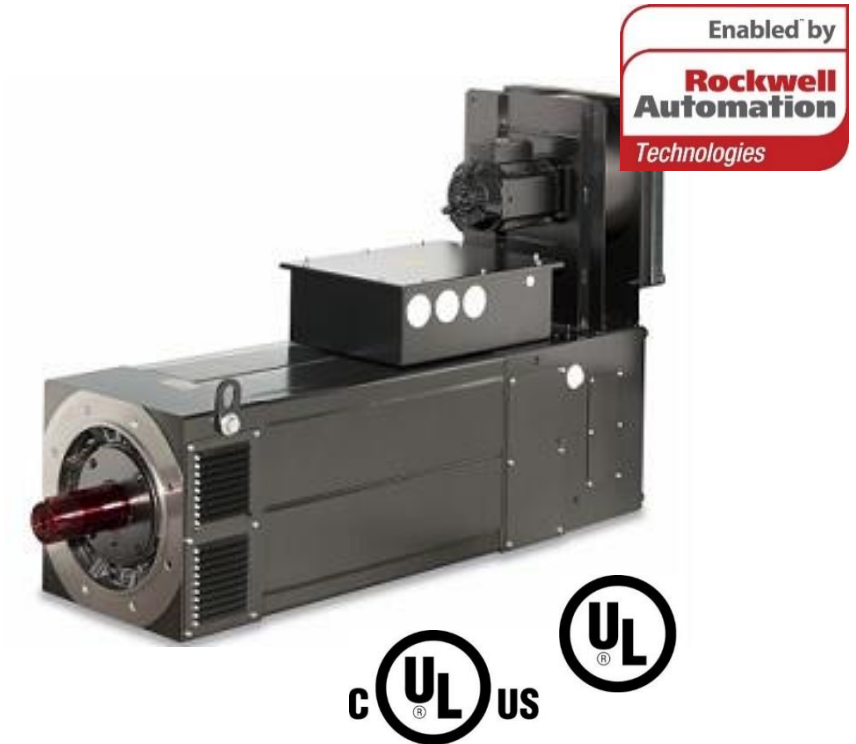
Variable speed drives

AC Motors for inverter supply

High performance squared frames: **BQ Series**

❖ **AIR COOLED VERSION**

- ❖ Insulation and impregnation expressly designed for inverter duty
- ❖ Power from 0,37 to 1150 kW
- ❖ Shaft height from 80 to 355mm
- ❖ Fully laminated frame, with integrated ventilation system
- ❖ Degree of protection IP23 and IP54 (55)
- ❖ Low inertia version available
- ❖ Great choice of accessories
- ❖ Larger frames available on request (up to 2500 kW)
- ❖ IEC60034 Standard



U.S. and Canadian Standard available

[Product list for Sicme Motori](#)

SERVO MOTOR	BQCP SERIES	IP54-55/axial fan
SERVO MOTOR	BQCR SERIES	IP54-55/radial fan
SERVO MOTOR	BQAR SERIES	IP23/radial fan

Encompass Partner Products

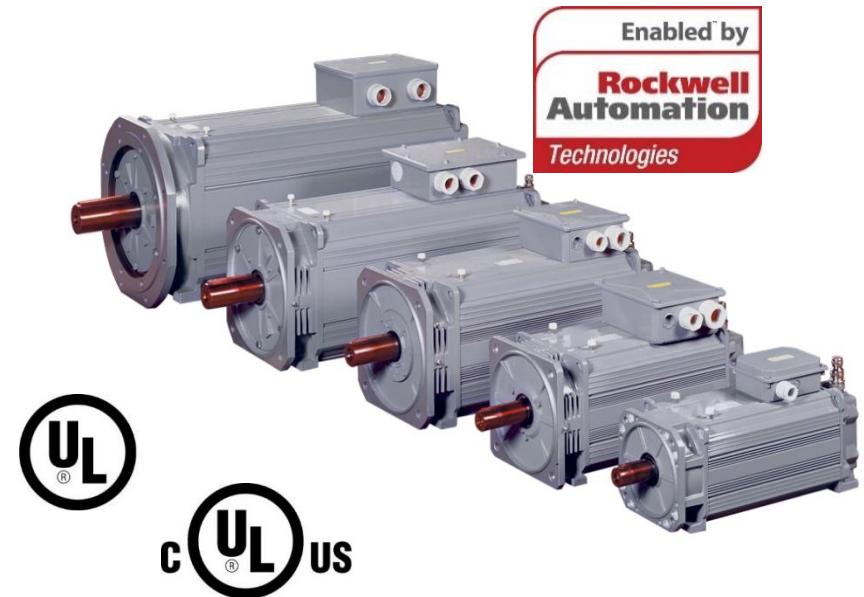
Variable speed drives

AC Motors for inverter supply

High performance squared frames: [AW Series](#)

❖ **LIQUID COOLED VERSION**

- ❖ Insulation and impregnation expressly designed for vector/inverter duty
- ❖ Power from 3,2 to 650 kW
- ❖ Shaft height from 100 to 355mm
- ❖ Degree of protection IP54 (55/56)
- ❖ Great choice of accessories
- ❖ Larger frames available on request (up to 1000 kW)
- ❖ IEC60034 Standard



U.S. and Canadian Standard available

[Product list for Sicme Motori](#)

SERVO MOTOR AW SERIES IP54/water jacket

Cross Reference

This is an initial list and additional conversion evaluations can be done upon request

	SICMEMOTORI	Rockwell Automation	size	Pn	nn	Mn	Un	wgt	Enc.	Brake
prg.	Partnumber	Partnumber		kW	rpm	Nm	V	kg	type	Y / N (Nm)
1	BQCP-B-132M-C-SA72AA	HPK-B1307C-SA42AA	132M	19.0	1500	121	460	109	S	N
2	BQCP-B-132M-C-SA74AA	HPK-B1307C-SB44AA	132M	19.0	1500	121	460	109	M	Y (130)
3	BQCP-B-132M-C-MA72AA	HPK-B1307C-MA42AA	132M	19.0	1500	121	460	109	M	N
4	BQCP-B-132P-C-SA72AA	HPK-B1310C-SA42AA	132P	25.0	1500	159	460	135	S	N
5	BQCP-E-132P-C-MA72AA	HPK-E1310C-MA42AA	132P	25.0	1500	159	400	135	M	N
6	BQCP-B-160M-C-SA72AA	HPK-B1613C-SA42AA	160M	42.1	1500	268	460	220	S	N
7	BQCP-B-180S-C-SA72AA	HPK-B1815C-SA42BA	180S	56.5	1500	360	460	390	S	N
8	BQCP-B-180L-C-SA72AA	HPK-B2010C-SA42BA	180L	80.1	1500	510	460	535	S	N
9	BQCP-B-180L-C-SA72AA	HPK-B2010C-S-X182*	180L	80.1	1500	510	460	535	S	N
10	BQCR-B-225M-C-MA72BA	HPK-B2212C-MA42BA	225M	125.7	1500	800	460	810	M	N
11	BQCP-B-132M-E-SA72AA	HPK-B1307E-SA42AA	132M	31.7	3000	101	460	109	S	N
12	BQCP-B-132M-E-MA7AA	HPK-B1307E-MA42AA	132M	31.7	3000	101	460	109	M	N
13	BQCP-B-132L-E-SA72AA	HPK-B1308E-SA42AA	132L	36.8	3000	117	460	122	S	N
14	BQCP-B-132L-E-MA72AA	HPK-B1308E-MA42AA	132L	36.8	3000	117	460	122	M	N
15	BQCP-E-132L-E-SA72AA	HPK-E1308E-SA42AA	132L	36.8	3000	117	400	122	S	N
16	BQCP-B-160S-E-MA72AA	HPK-B1609E-MA42AA	160S	50.3	3000	160	460	201	M	N
17	BQCP-B-160S-E-SA72AA	HPK-B1611E-SA42AA	160S	60.3	3000	192	460	201	S	N
18	BQCP-B-160S-E-MA72AA	HPK-B1611E-MA42AA	160S	60.3	3000	192	460	201	M	N
19	BQCP-B-160L-E-SA72AA	HPK-B1613E-SA42AA	160L	82.0	3000	261	460	247	S	N

NOTES: 1) The code for this BQ motor refers to an inline-mounted blower. Top-mounted blower is also available as option, for a correct match with HPK (motor code BQAr-B-132M-C-SC74AA and related drawing code Q72AA803 is in ANNEX A). 2) in this case BQ motor is 180 mm framesize while HPK motor is a 200mm frame size, then 20mm thick spacers are required, in case of foot mounting. Flange mounting is n.a. for HPK motor, then not an issue.

Flexible Motor Selection

Motor	BQCP-E132LC-MA72AA									
	BQCP	E	132L	C	M	A	7	2	A	A
	xxxx	x	xxxx	x	x	x	x	x	x	x
Series	BQCP = AC 3-phase air cooled motor - IP 54 - axial fan BQCr = AC 3-phase air cooled motor - IP 54 - radial fan BQAr = AC 3-phase air cooled motor - IP 23 - radial fan AW = AC 3-phase liquid cooled motor - IP 54 -									
Voltage class	B = 460Vac E = 400Vac									
Frame size	132L (example for frame size 132L)									
Base speed	A = 580rpm B = 1000rpm C = 1500rpm D = 1800rpm D1 = 2200rpm D2 = 2600rpm E = 3000rpm									
Feedback	M = Absolute Multi-turn encoder 1024 SinCos x 4096 step (Hiperface) S = Absolute Single-turn encoder 1024 SinCos (Hiperface) H = Incremental encoder 1024 ppr, out 5V TTL H1 = Incremental encoder 2048 ppr, out 5V TTL H2 = Incremental encoder 4096 ppr, out 5V TTL									
Blower and Junction box Location	A = Inline blower, Top mounted junction box AL = Inline blower, left side junction box AR = Inline blower, right side junction box B = Top mounted blower, top mounted junction box C = Top mounted blower, left side junction box D = Top mounted blower, right side junction box									
Connection	7 = SpeedTec DIN connector									
Brake	2 = Without brake 4 = With holding brake									
Mounting type / Shaft key	A = IEC Metric, foot + flange mounting / shaft with key B = IEC Metric, foot mounting only / shaft with key C = IEC Metric, foot + flange mounting / shaft without key D = IEC Metric, foot mounting only / shaft without key									
Factory options	A = standard B = DE roller bearing H = high speed bearings + balancing S deg. K = KTY84-130 sensors P = Protection deg. IP 55 S = Special shaft (to be described) T = Windings tropicalization X = Option to be described with full text									

- Smart RA motor code
- BLOB files available
- 3D motor drawings upon request
- Incremental encoder VFS-60
- Absolute encoder SFS/SFM-60 (Hiperface)
- Smart Speedtec DIN connector
- Brakes supply voltage 24 Vdc available

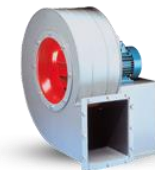
Create your code for an easy spare part selection

CODES FOR ENCODERS



BQCP	E	132L	C	M	7	ENC	0
Sequential value							
0,1,2,3, ... sequential value							
ENC fixed							
Connection							
7 = SpeedTec DIN connector							
Feedback							
M = Multi-turn encoder 1024 SinCos x 4096 step (HiPerface)							
S = Single-turn encoder 1024 SinCos (HiPerface)							
H = Incremental encoder 1024 ppr, out 5V TTL							
H1 = Incremental encoder 2048 ppr, out 5V TTL							
H2 = Incremental encoder 4096 ppr, out 5V TTL							
Base speed							
A = 580rpm							
B = 1000rpm							
C = 1500rpm							
D = 1800rpm							
D1 = 2200rpm							
D2 = 2600rpm							
E = 3000rpm							
Frame size							
132L (example for shaft high + stator lenght)							
Voltage class							
B = 460Vac							
E = 400Vac							
Series							
BQCP = AC 3-phase air cooled motor - IP 54 - axial fan							
BQCR = AC 3-phase air cooled motor - IP 54 - radial fan							
BQAR = AC 3-phase air cooled motor - IP 23 - radial fan							
AW = AC 3-phase liquid cooled motor - IP 55							

CODES FOR BLOWERS



BQCP	E	132L	C	X	A	BLW	0
Sequential value							
0,1,2,... sequential							
BLW fixed							
Blower and Junction box Location							
A = Inline blower, Top mounted junction box							
AL = Inline blower, left side junction box							
AR = Inline blower, right side junction box							
B = Top mounted blower, left side junction box							
C = Top mounted blower, right side junction box							
Feedback							
X fixed code							
Base speed							
A = 580rpm							
B = 1000rpm							
C = 1500rpm							
D = 1800rpm							
D1 = 2200rpm							
D2 = 2600rpm							
E = 3000rpm							
Frame size							
132L (example for shaft high + stator lenght)							
Voltage class							
B = 460Vac							
E = 400Vac							
Series							
BQCP = AC 3-phase air cooled motor - IP 54 - axial fan							
BQCR = AC 3-phase air cooled motor - IP 54 - radial fan							
BQAR = AC 3-phase air cooled motor - IP 23 - radial fan							

Embedded Technology



SICMEMOTORI

SICME MOTORI S.R.L.
Motion - Servo Motors
BQ Series Servo Motors

Company Overview:
Sicme Motori is a LEADING manufacturer of AC-DC motors and generators, vauing more than 45 years of ENGINEERING know-how applied to new technologies, Innovation and customised solutions.

Product Overview:
The "Vector-Speed" AC motors BQ Series have been specifically designed to meet the needs of modern high-performance applications, which require the use of variable speed motors controlled by an inverter. The main innovation is in the laminated stator pack, which carries out the function of the frame and integrates the ventilation system. The series currently consists of seven frame sizes, up to about 100kW at 1500rpm; higher powers are in development and are available for specific projects.

Primary Industries:

- Automation and Manufacturing
- Material Handling & Packaging
- Metals

Primary Applications:

- Extruders for plastic, rubber and foods
- Metalworking machines
- Plastic Injection machines
- Paper and cardboard production lines
- Automation/Machines

Product Name/ Catalog No.	Description	Platform	Connectivity
SERVO MOTOR BQCP SERIES	AC 3-phase air-cooled motor, IP54, axial fan	• Motion	• None
SERVO MOTOR BQCR SERIES	AC 3-phase air-cooled motor, IP54, radial fan	• Motion	• None
SERVO MOTOR BQAR SERIES	AC 3-phase air-cooled motor, IP23, radial fan	• Motion	• None

Standard Features:

- High power/torque density
- Peak torque available even at zero speed
- High protection and mechanical robustness
- Ventilation and speed transducer incorporated in the motor
- Dimensional and power comparability with DC motors

Specifications:

- Power: 1.5-940kW (1500RPM)
- Torque: 9.5-5985Nm (1500RPM)
- Nr. of pole: 4 (AV3SS has 6)
- Type of cooling: IC416/IC06
- Mount./IP: IM2001 frames 80-160/IM1001 frames 180-355/IP23-54



Contact:

Paolo Di Liddo
SICME MOTORI S.R.L.
Strada del Francese 130
Torino
ITALY

E-Mail: diliddo@sicmemotori.com

Links for Additional Information:

[Sicme Motori's Main Website](#)



Click [here](#) to go back to the previous page.

Rockwell Automation

Allen-Bradley • Rockwell Software



Product Category	Company Name	POWER & MOTION / DISCRETE	SUSTAINABLE PRODUCTION / ENERGY	INFORMATION	PROCESS CONTROL	SAFETY
Motion - Servo Motors	SICME MOTORI S.R.L.	●				

Motion – Servo Motors

Parameters for Motion Analyzer

User define motor available

Technology integration

Suitable for Powerflex and Kinetix Drives

Technical and field support

[Click here to check our Web Motor Configurator](#)



Sales Network

- ✘ Sicme Motori exports the large majority of its products
- ✘ Foreign markets are served by authorized distributors or direct sales force
- ✘ Click here for the complete Sales Network: sicmemotori.it/en/contatti/rete-vendita/
- ✘ New Sales/After Sales support in **North America**

ELWOOD MOTORS

2701 North Green Bay Rd
Racine, WI 53404, USA
Toll Free: 1-800-558-9489
Office: 262-637-6591
E-mail: info@elwood.com
Web: <http://www.elwood.com/>



- ✚ Sicme Motori has a wide International presence with various certified after sales center in all 5 continents
- ✚ Sicme Motori is partner of EASA
- ✚ EASA is leader in electrical and mechanical apparatus service and repair industry



***Reliable Solutions
Today!***

www.easa.com

EUROPE

Austria

R. Riegler GmbH

Ehrentletzbergerstraße A – 4020 Linz
Tel.: ++43-732-770882
Fax: ++43-732-783634
E-mail: office@r-riegler.at
Ref.: Mr. Ernst Jessl
Web: www.r-riegler.at

Bulgaria

S.C ASI RO S.r.l.

235b Darzei II Str., Crevedia,
Jud. Dambovita, 137180 Romania
Tel.: +40 374 003354 / Fax: +40 757 710204
Mob.: +40 723 339493
Ref.: Mr. Doru Cîrnaru
E-mail: doru.cirnar@nidec-asi.com
Web: <http://www.nidec-asi.com>

Belaruss

Electromatica

Cvetochynaya Str. 16, 196603 Saint-Petersburg
Tel.: ++7-812-313-4170
Fax: ++7-812-313-4180
E-mail: info@electromatica.ru
Web: www.sicme.ru

Czech Republic

JKO MEZ CZ spol. s r.o.

Hájecká 2 618 00 BRNO – Czech Republic
Tel.: +420 548 215 713 / Fax: +420 548 214
Ref.: Mr. Karel Jakeš
E-mail: jakes@mez-cz.cz
Web: www.mez-cz.eu

France, Belgium and Luxembourg

Sicme Motori France

3 Square Gauguin, F – 92500 Rueil Malmaison
Tel.: ++33-1-47513841
Fax: ++33-1-47511806
E-mail: olgalazaro@sicmemotori.fr
Mob. +33-7-86403830
Ref.: Mrs. Olga Lazaro
Web: www.sicmemotori.fr

GS MAINTENANCE SARL

184 Rue Pascal – Zone Industrielle
VAUX LE PENIL – FRANCE
Tel.: +33 164799404 / Fax: +33 164199479
Ref.: Mr. Santomena Gaetano
E-mail: gsm77@gsmaintenance.fr

Germany

Menzel Elektromotoren GmbH

Neues Ufer 19–25, 10553 Berlin
Tel.: +49-30-349922-0
Fax: +49-30-349922-999
E-mail: info@menzel-elektromotoren.com
Helpline: +49 1577 3499220

Holland

Bakker Repair + Service

Leeghwaterstraat 55,
P.O. Box 25 – 3360 AA Slidrecht
Tel.: +31 184 436666
Fax: +31 184 436677
E-mail: info@bakker-sl.nl
Web: www.bakkersliedrecht.com

Kolmer Special Motors B.V.

Industrieweg 16c – 3881 LB Putten
Tel.: +31341745270 / +31652528534
E-mail: berend.muis@kolmer.nl
Ref.: Mr. Berend Muis
Web: www.kolmer.nl

Italy

SicmeService

Strada del Francese 130, 10156 Torino
Tel. +39-011-4076464 / Fax +39-011-4500047
Mob: +39-348-2716623
Ref.: Mr. Dolfi
E-mail: service@sicmemotori.com

Romania

S.C ASI RO S.r.l.

235b Darzei II Str., Crevedia,
Jud. Dambovita, 137180 Romania
Tel.: +40 374 003354
Fax: +40 757 710204
Mob: +40 723 339493
Ref.: Mr. Doru Cîrnaru
E-mail: doru.cirnar@nidec-asi.com
Web: <http://www.nidec-asi.com>

Russia

Electromatica

Cvetochynaya Str. 16,
196603 Saint-Petersburg
Tel.: ++7-812-313-4170
Fax: ++7-812-313-4180
E-mail: info@electromatica.ru
Web: www.sicme.ru

Slovakia

JKO MEZ CZ spol. s r.o.

Hájecká 2 618 00 BRNO
Tel.: +420 548 215 713
Fax: +420 548 214
Ref.: Mr. Karel Jakeš
E-mail: jakes@mez-cz.cz
Web: www.mez-cz.eu

Spain

Carbo Electric, s.l.

C/. Castelló, 21 (Pol. Inds. Salinas),
08830 Sant Boi de Llobregat, Barcelona
Tel.: ++34-936-303486
Fax: ++34-936-303480
Ref.(1): Mr. Manuel Márquez Forteza
Ref.(2): Mr. Xavier Subiratas Enriquez
E-mail: carboelectric@carboelectric.com
Web: www.carboelectric.com

Sweden

Myrén & Co. AB Ingenjörsfirman

Headquarter: Box 1084, SE-436 22
Askim – Workshop: Askims Industriväg 11,
SE 436 34 Askim – Göteborg
Tel.: ++46-31-748 1860
Fax: ++46-31-748 1870
Ref.: Mr. Matti Ilkko
E-mail(1): matti.ilkko@myren.com
E-mail(2): myren@myren.com

Turkey

MOGESER

Industrial & Aviation MRO Services

Aydinli Mah. Yanyol Caddesi,
Melodi Sok. 2/29, BILMO Sanayii Sitesi,
34953 – Tuzia / ISTANBUL
Tel.: +90 216 593 43 64
Fax: +90 216 593 43 66
Mob: +90 532 666 8219
Ref.: Mr. Tekin Ersoz
E-mail(1): tekin@mogeser.com.tr
E-mail(2): bilgi@mogeser.com.tr
Web: www.mogeser.com.tr

UK

Sulzer Dowding & Mills UK (Ltd)

Birmingham Service Center
Camphill B12 0JJ Birmingham
Tel.: +44 121 766 6161
<http://www.sulzer.com/en>

AFRICA

Algeria

SOMIRE SARL

11, Rue Mohamed Tahar Allam Beaulieu
16270 Oued Smar

Tel/Fax: (+213) 23 83 19 45

Mob: (+213) 550 93 99 18

E-mail(1): contact@somire.com

E-mail(2): z.douadi@somire.com

Site web: www.somire.com

Ghana

Hoisting and Handling Controls (Pty) Ltd

PO Box 780 Edenvale – South Africa 1610
38 Lower Germiston Road (Corner Wriggle)

Heriotdale, Germiston – Gauteng

Tel.: +27 11 621 2000 / Fax: +27 11 626 1983

Ref.(1): Mr. Wally Watson

Mob.(1): +27 (0)82 891 7883

E-mail(1): wally@eet.co.za

Ref.(2): Mr. Trevor Watson

Mob.(2): +27 (0)83 606 0506

E-mail(2): trevor@eet.co.za

Guinea

Hoisting and Handling Controls (Pty) Ltd

PO Box 780 Edenvale – South Africa 1610
38 Lower Germiston Road (Corner Wriggle)

Heriotdale, Germiston – Gauteng

Tel.: +27 11 621 2000 / Fax: +27 11 626 1983

Ref.(1): Mr. Wally Watson

Mob.(1): +27 (0)82 891 7883

E-mail(1): wally@eet.co.za

Ref.(2): Mr. Trevor Watson

Mob.(2): +27 (0)83 606 0506

E-mail(2): trevor@eet.co.za

Mali

Hoisting and Handling Controls (Pty) Ltd

PO Box 780 Edenvale – South Africa 1610

38 Lower Germiston Road (Corner Wriggle)

Heriotdale, Germiston – Gauteng

Tel.: +27 11 621 2000 / Fax: +27 11 626

1983

Ref.(1): Mr. Wally Watson

Mob.(1): +27 (0)82 891 7883

E-mail(1): wally@eet.co.za

Ref.(2): Mr. Trevor Watson

Mob.(2): +27 (0)83 606 0506

E-mail(2): trevor@eet.co.za

South Africa

Hoisting and Handling Controls (Pty) Ltd

PO Box 780 Edenvale – South Africa 1610

38 Lower Germiston Road (Corner Wriggle)

Heriotdale, Germiston – Gauteng

Tel.: +27 11 621 2000 / Fax: +27 11 626

1983

Ref.(1): Mr. Wally Watson

Mob.(1): +27 (0)82 891 7883

E-mail(1): wally@eet.co.za

Ref.(2): Mr. Trevor Watson

Mob.(2): +27 (0)83 606 0506

E-mail(2): trevor@eet.co.za

SADC Countries: Angola, Botswana, Democratic Republic of Congo, Lesotho, Madagascar, Malawi, Mauritius, Mozambique, Namibia, Kingdom of Swaziland, Tanzania, Zambia, Zimbabwe

Hoisting and Handling Controls (Pty) Ltd

PO Box 780 Edenvale – South Africa 1610

38 Lower Germiston Road (Corner Wriggle)

Heriotdale, Germiston – Gauteng

Tel.: +27 11 621 2000 / Fax: +27 11 626 1983

Ref.(1): Mr. Wally Watson

Mob.(1): +27 (0)82 891 7883

E-mail(1): wally@eet.co.za

Ref.(2): Mr. Trevor Watson

Mob.(2): +27 (0)83 606 0506

E-mail(2): trevor@eet.co.za

ASIA

China

Hylinco Fluid Power Co.,LTD
No.65 Zhongshi Liandong Industry Zone
Tongzhou District – Beijing
Ref.: Mr. Feago Zhang
Tel.: +86(0)10 62357279 ext. 610
Fax: +86(0)10 58857029
E-mail: f.zhang@hylinco.com.cn

Indonesia

PT. Trimitra Teknindojaya
Jalan Bulevar BGR Raya Blok A-2, No. 18,
Ruko Vila Gading Indah, Jakarta 14240
Tel.: +62-21-4509251 – 45846405 –
45846406
Fax: +62-21-4509250
Ref.: Mr. Suwandi Fungsi
E-mail: suwandi_fungsi@trimtek.co.id

Kazakhstan

Electromatica
Cvetochnaya Str. 16,
196603 Saint-Petersburg
Tel.: ++7-812-313-4170
Fax: ++7-812-313-4180
E-mail: info@electromatica.ru
Web: www.sicme.ru

Korea

Roritec Co., LTD
460-1 Hyomun-Dong BUK-KU ULSAN – KOREA
Ref.: Mr. Oh Keon Ju
E-mail: keonju@roritec.co.kr
Web: www.roritec.co.kr

Singapore

Espansione Sales Pte Ltd
151, Chi Swee Road #02-31 Manhattan
House,
169876 Singapore
Tel.: ++65-6734-1382
Ref.: Mr. A. Wong
E-mail: espansione@singnet.com.sg

Taiwan

An Fam Enterprise Co Ltd
6 F-11, No. 351, Sec. 2 Zhongshan Road
Zhonghe City 235 Taipei
Tel.: ++886-2-82218716
Fax: ++886-2-82218718
Ref.: Mr. R. Shen
E-mail: shen@anfam.com.tw

Thailand

XCEL Drives Company Ltd.
65/19-20 Moo 6, Nakhon-in Rd.,
Bangkhunkong, Bangkruai
11130 Nonthaburi
Tel.: +66 (0)2 459 5600
Fax.: +66 (0)2 459 5599
Ref.: Mr. Wicha Nonthidhumrong
E-mail: wicha@xceldrives.co.th

VR Master Co. Ltd.

112/111 Moo 6, Tungsonghong Laksi
Bangkok 10210
Tel.: +66-2-29540112-3
Fax.: +66-2-9540878
Ref.: Mr. Ekkasit Smanchat
E-mail: ekkasit@vr-master.com
Web: www.vr-master.com

PACIFIC ISLANDS

Australia

EMSS Electric Motor Sales & Service Pty. Ltd
45 Jarrah Dve. Braeside
Victoria Australia 3195
Tel.: ++61-(0)3-9580-9522
Fax: ++61-(0)3-9587-3886
Ref.: Mr. Tom Kerlin
E-mail: TomKerlin@emss.net.au
Web: www.emss.net.au

Contact Details

Sicme Motori S.r.l.

Strada del Francese 130

10156 TORINO Italy

Tel.: +39-011-40 76 311

Fax: +39-011-4500047/4076439

E-mail: sicmemotori@sicmemotori.com

Web: www.sicmemotori.com

Sicme Motori on YouTube: [sicmemotori-media\(1\)](https://www.youtube.com/channel/UC1mK8w8w8w8w8w8w8w8w8w8)

Sales Manager

Mr. Maurizio Leovino

Tel.: +39 011 40 76 455

Mob: +39 348 31 96 911

E-mail: leovino@sicmemotori.com

Skype: mleo-sm

Engineering R&D Manager

Eng. Diego Artioli

Tel.: +39 011 40 76 440

Mob: +39 340 79 56 655

E-mail: artioli@sicmemotori.com

Skype: dartioli-sm

Sales Engineer channel to Rockwell

Eng. Paolo Di Liddo

Tel.: +39 011 40 76 476

Mob.: +39 348 27 16 627

E-mail: diliddo@sicmemotori.com

Skype: diliddo-sm