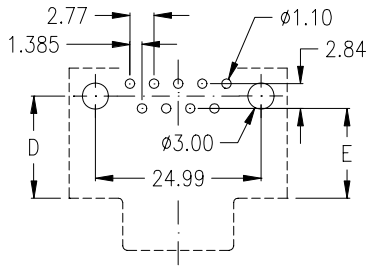


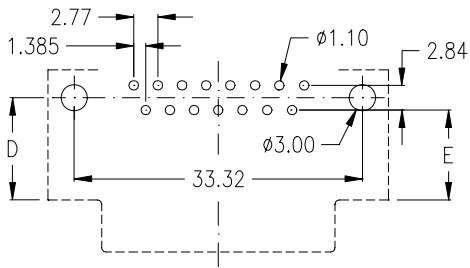
# Footprints D-Sub 90° female & male ( top view )



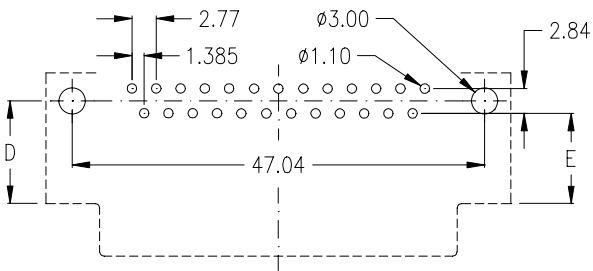
## N900 & M900 Type



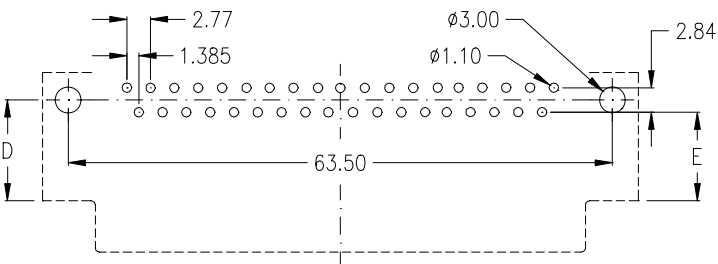
9-pin



15-pin

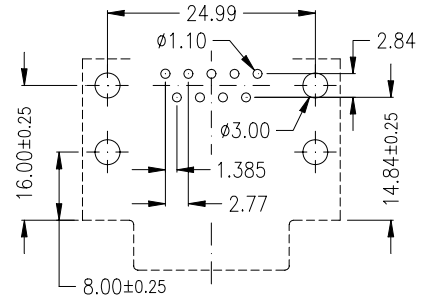


25-pin

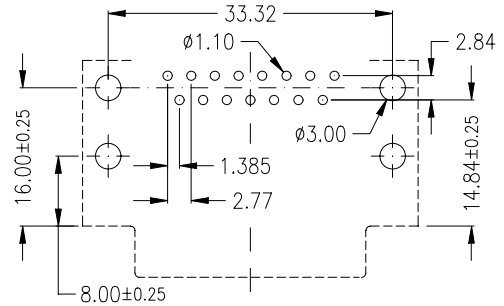


37-pin

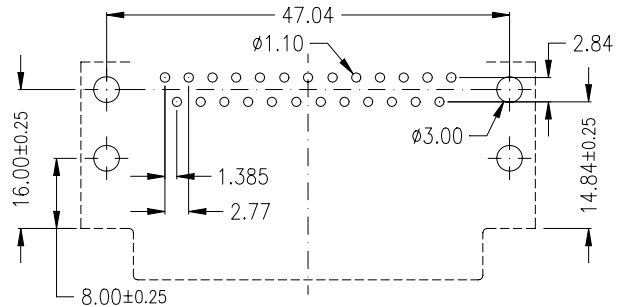
## L900 Type



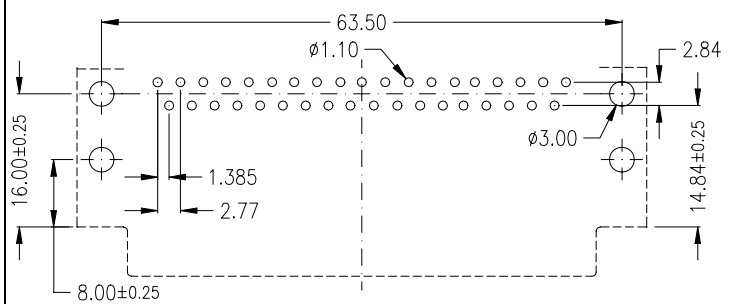
9-pin



15-pin



25-pin



37-pin

D-Sub Type	Dim. "D" ±0.25/±.010	Dim. "E" ±0.25/±.010
<b>N 900</b>	<u>9.50</u> .374	<u>8.08</u> .318
<b>M 900</b>	<u>11.70</u> .461	<u>10.30</u> .406