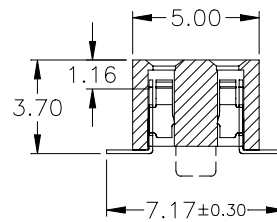
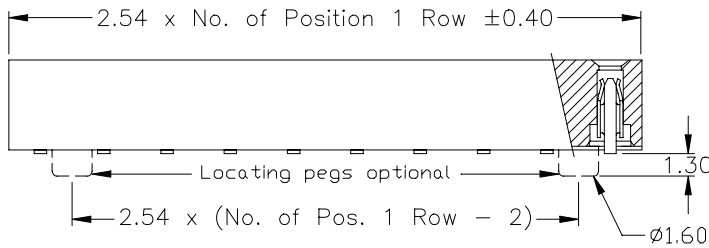
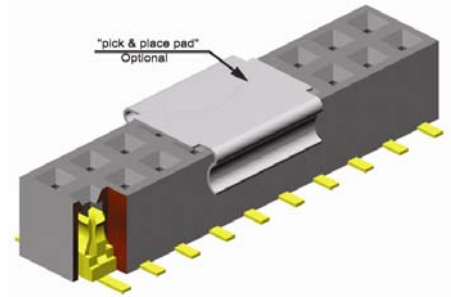
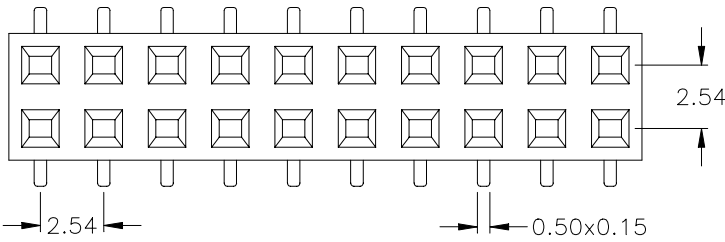


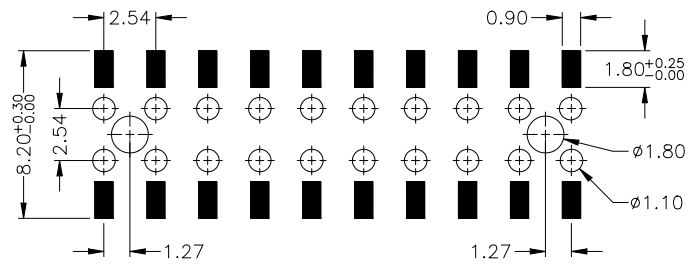
2.54mm pitch Female Header - SMT -  
Top & Bottom Entry 3.70mm profile



**APPLICATION AND FEATURES**

- **Standard:**  
**tube packing and without "pick & place pad"**
- 3.70mm height above board.
- Hi-rel dual beam contacts
- Designed for board to board small spacing interconnection
- Mating with 2.54mm pitch, 0.64mm square pin headers

**PCB Surface Mount & Hole Layout**



**SPECIFICATIONS**

Current rating	3 A
Insulator resistance	5000 MΩ min.
Contact resistance	20 mΩ max.
Dielectric withstanding	500 V AC

Operating temperature	- 45° to +125°C
Processing temperature	+250°C +0/-5°C for 10sec.
Contact material (RoHS compliant)	Phosphor Bronze
Insulator material (RoHS compliant)	Nylon UL 94 V-0

**How to order**

**BS2 - xxx - TB 370 - 55 / X**

