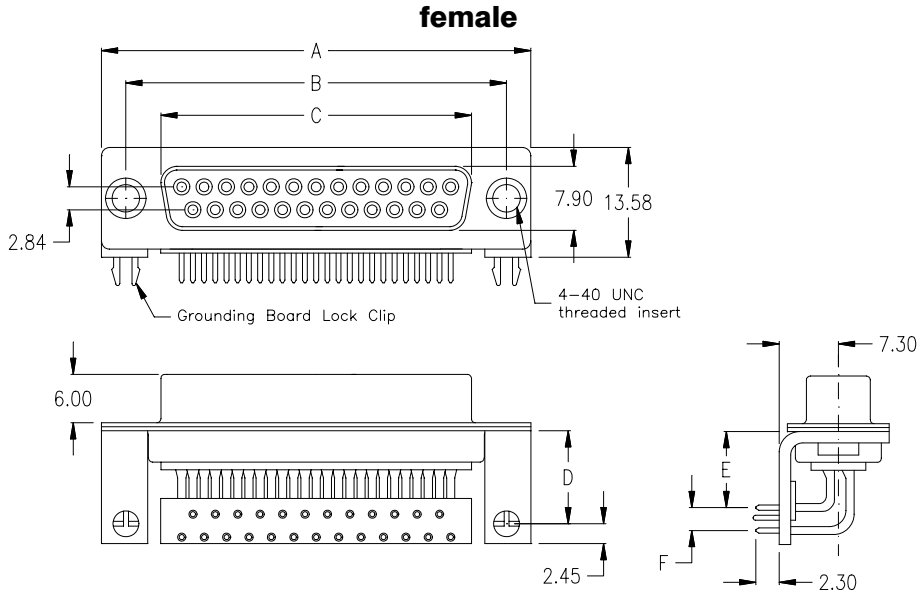


SD Series - D-Sub 90°
 „open body “7,30mm/.287” centre type



Ordering Code

SDF - xxx - T 970 - 95/ XxXX

No. of contacts

Option

Plating: -95 = tin(leadfree)/gold

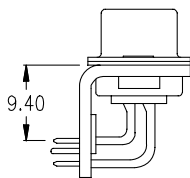
No. of contacts

Dimension

	A	B	C	D	
				if "F"=2,54	if "F"=2,84
009	30.81 1.213	24.99 .984	16.33 .643	10.07 .396	10.02 .394
015	39.14 1.541	33.32 1.312	24.66 .971	10.07 .396	10.02 .394
025	53.04 2.088	47.04 1.852	38.38 1.511	10.07 .396	10.02 .394
037	69.32 2.729	63.50 2.500	54.84 2.159	10.07 .396	10.02 .394

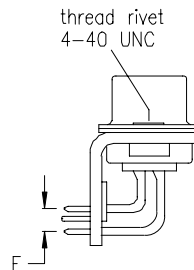
General Specification page 72

Type (Dimension "E")

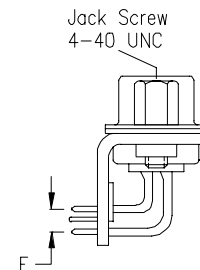


T

Options



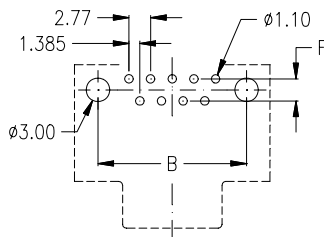
H N



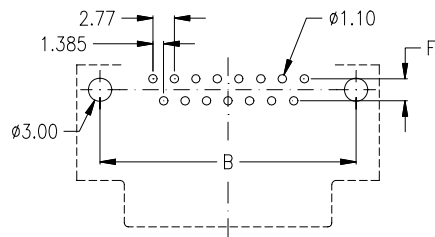
H NJ

Dimension "F"	Option
2,54mm	1
2,84mm	2

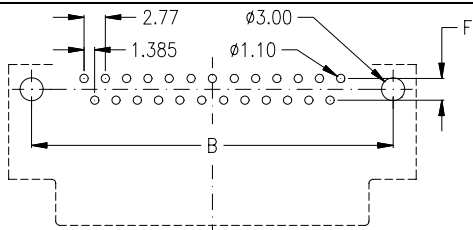
PCB Layout „female“



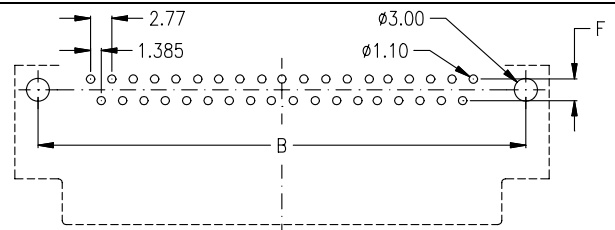
9 pin



15 pin



25 pin



37 pin