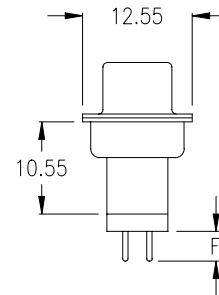
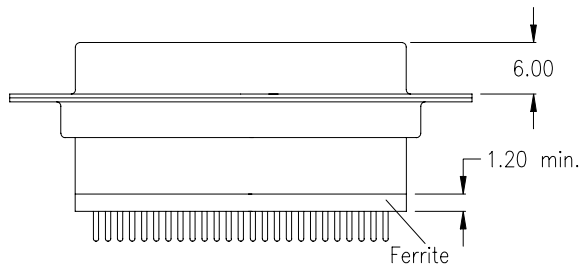
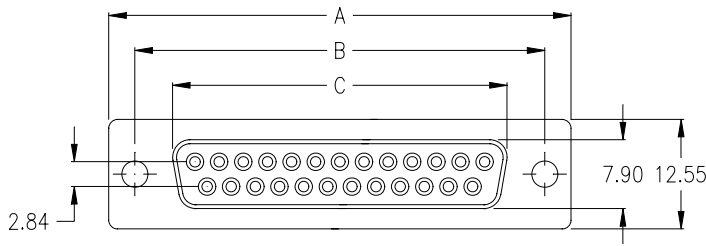


female



Ordering Code

**SDF - xxx - B111 - 95 / F XXX**

No. of contacts

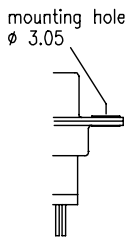
Option

Plating: **-95** = tin(leadfree)/gold

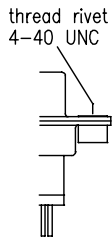
General Specification page 72

No. of contacts	Dimension		
	A	B	C
<b>009</b>	30.81	24.99	16.33
	1.213	.984	.643
<b>015</b>	39.14	33.32	24.66
	1.541	1.312	.971
<b>025</b>	53.04	47.04	38.38
	2.088	1.852	1.511
<b>037</b>	69.32	63.50	54.84
	2.729	2.500	2.159

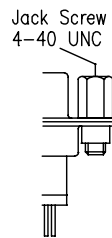
Options



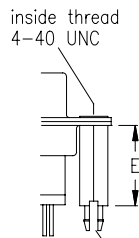
**T0**



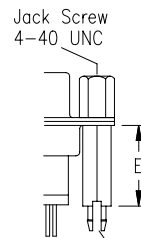
**T**



**TJ**



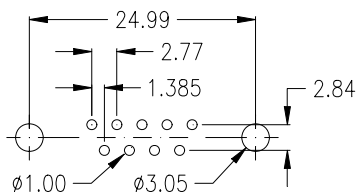
**BR**



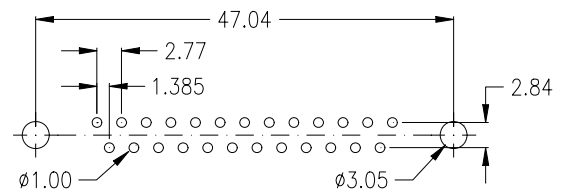
**BRJ**

E ±0.25	F ±0.40	Option
12,70	4.00	<b>3</b>
14,50	4.50	<b>4</b>

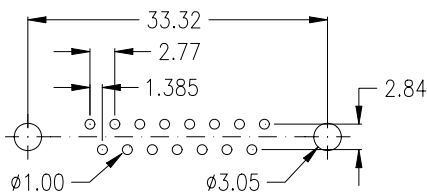
PCB Layout „female“



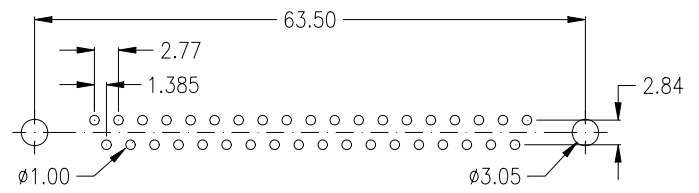
9 pin



25 pin



15 pin



37 pin