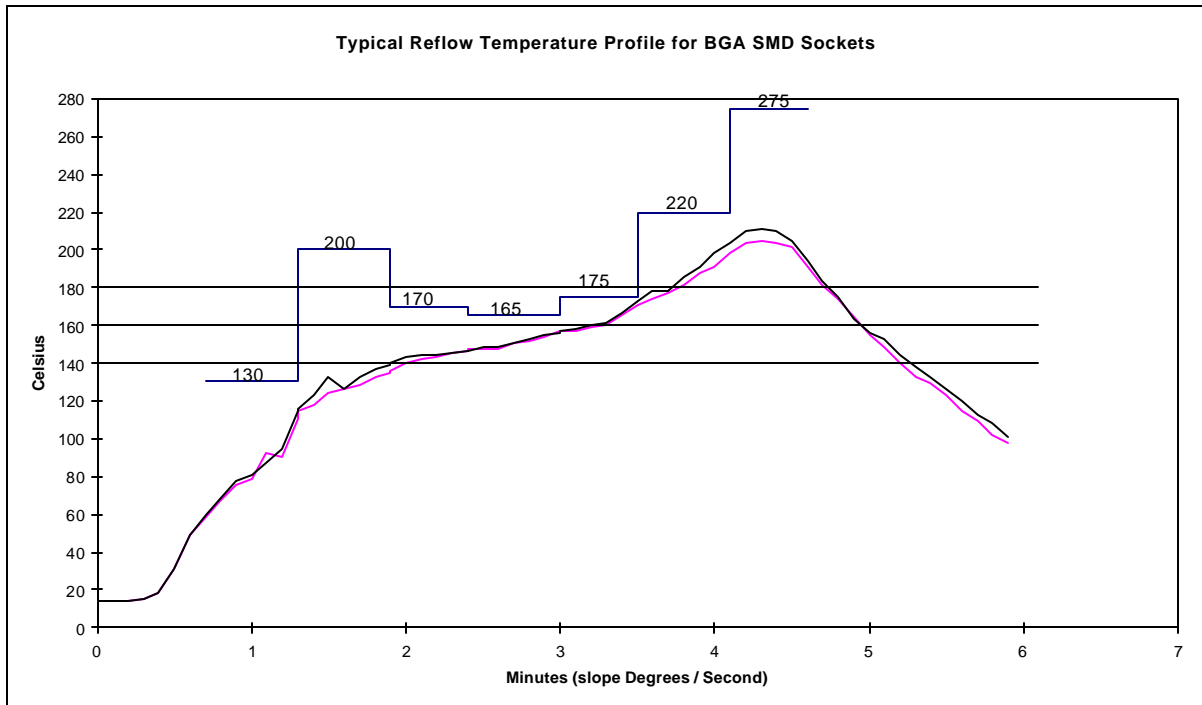




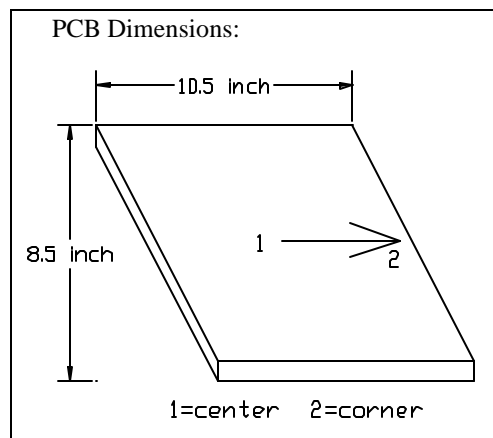
EMULATION TECHNOLOGY, INC.

Recommended Solder Profile Using Hot Air Convection Method Applies to all BPW & LPW Production Sockets



Measuring points	Peak Temp.	Max. Rising Slope	Time between 140° - 160°	Total time above 180°
1 = center	201.2°	2.54° / sec.	78.32 sec.	47.69 sec.
2 = corner	208.7°	2.72° / sec.	89.77 sec.	53.82 sec.

Solder Paste = Alpha Metals WS619
 Solder paste Thickness = 0.006" Inch – 0.0075" Inch
 Belt Speed = 25 Inch / min
 BTU Oven (hot air convection)



www.1800ADAPTER.com

1-800-ADAPTER (232-7837)