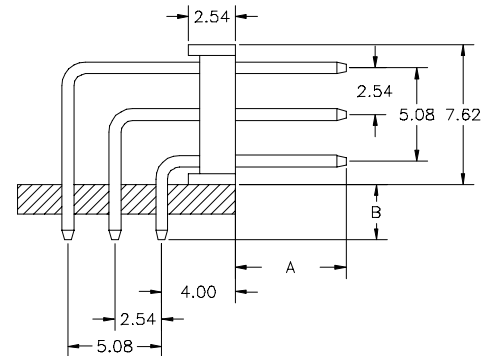
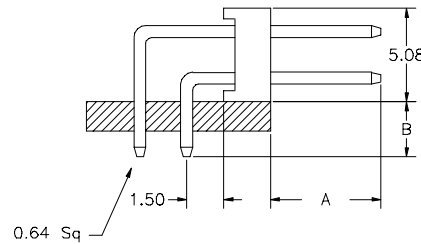
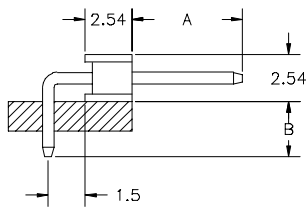
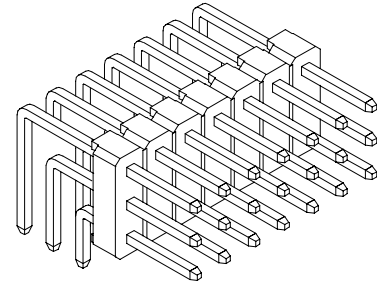
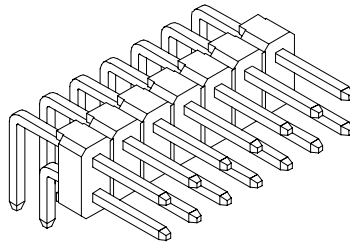
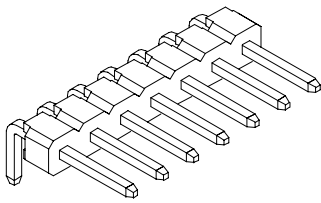


2.54mm Right Angle Pin Header



DOWN ANGLE PIN TYPES

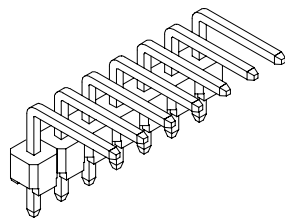
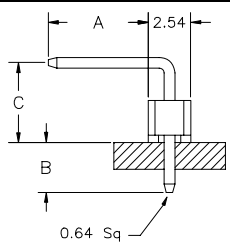
Pin code	"A" DIM mm/inch	"B" DIM mm/inch	Pin code	"A" DIM mm/inch	"B" DIM mm/inch	Pin code	"A" DIM mm/inch	"B" DIM mm/inch
108 / 01	3.00/.118	3.00/.118	147 / 04	4.80/.189	5.11/.201	140 / 09	6.20/.244	3.15/.124
116 / 03	3.00/.118	4.00/.157	125 / 09	5.30/.209	2.54/.100	147 / 01	7.00/.276	3.00/.118
116 / 04	3.50/.138	3.50/.138	133 / 01	5.70/.224	2.85/.112	147 / 03	7.40/.291	2.54/.100
125 / 07	4.50/.177	3.30/.130	155 / 02	5.70/.224	5.11/.201	184 / 04	8.00/.315	5.80/.228
125 / 06	4.70/.185	3.15/.124	125 / 16	6.00/.236	2.00/.079	155 / 04	8.20/.323	2.54/.100
			140 / 01	6.00/.236	3.00/.118	184 / 09	10.40/.409	3.30/.130
						203 / 05	12.00/.472	3.30/.130

Many other pin types available on request

Standard pin type

Many other pin types available on request

UP ANGLE PIN TYPES



Pin code	"A" DIM mm/inch	"B" DIM mm/inch	"C" DIM mm/inch
147 / 07	6.00/.236	3.00/.118	4.80/.189
155 / 03	6.20/.244	2.54/.100	6.30/.248
184 / 06	8.00/.315	3.60/.142	6.30/.248
184 / 15	7.00/.276	3.00/.118	6.35/.250

Specifications: Refer to straight pin headers

Many other pin types available on request

How to order

SL x - xxx - X xxx/xx - 55

Rows	Nbr of contacts	Execution	Pin type	Plating
1 = single row 2 = dual row 3 = triple row	single row = 002 to 040 dual row = 004 to 080 triple row = 009 to 120	R = Down angle (P.B.T. Insulator) RH = Down angle (hi temp Insulator) only for single row: U = Up angle (P.B.T. Insulator) UH = Up angle (hi temp Insulator)	See above table	55 = gold (standard plating) 99 = tin (leadfree) 95 = tin/gold (tin leadfree)