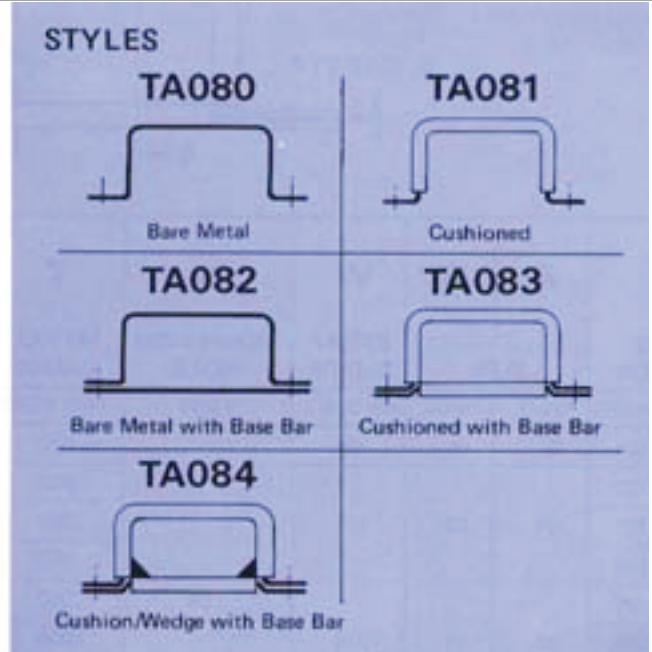


Bulletin 800: Clamp, Double Mount Rectangular

FAA TSO-C171



Part Numbering System

ex: TA08306SC10-16CR = Rectangular, double mount clamp with base bar, made up of .050 x 5/8 wide cadmium plated steel and neoprene cushion. To accept a .625(10) x 1.00(16) rectangular tube.

Breakdown:

Part number shown below is separated for clarity. When ordering, do not show spaces.

TA083 06 SC 10 - 16 CR

- TA083 = Basic Part Number
- 06 = Design Detail (See below)
- SC = Metal Identification (See Bulletin 120)
- 10 = Size – A, in 1/16" Increments (show as a minimum of 2 digits)
- 16 = Size – B, in 1/16" Increments (show as a minimum of 2 digits)
- CR = Cushion Code (See Bulletin 120)

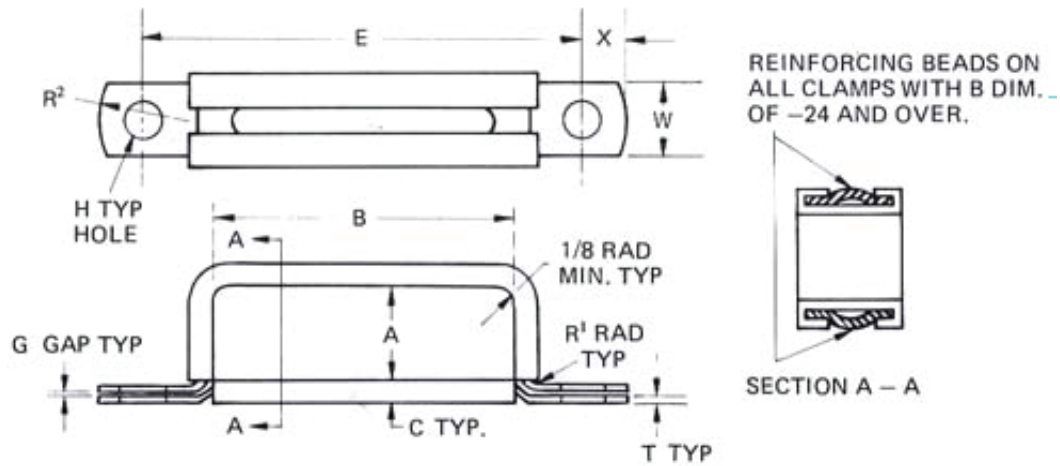


Diagram ID ▶	Size		Strap Width	Mounting Hole	Metal Gauge	Mounting Dimension Dim. B +	Clearance	Gap	Cut Off	Rad	
	A	B	W	H	T	E	C	G	X	R <sup>1</sup>	R <sup>2</sup>
Tolerances ▶	* Min.	* Min.	+/- .003	+/- .005	Per Spec.	+/- .030	Ref.	Ref.	+/- .010	+/- .015	+/- .015
Part Number											
TA08( )01	01	06	3/8	.204	.030	.820	.140	1/32	.188	1/16	3/8
TA08( )02	04	12	1/2	.204	.030	.820	.170	1/32	.218	1/16	3/8
TA08( )03	04	12	1/2	.204	.040	.820	.180	1/32	.218	1/8	3/8
TA08( )04	04	12	1/2	.204	.050	.820	.190	1/32	.218	1/8	3/8
TA08( )05	06	16	5/8	.204	.040	.820	.180	1/32	.250	1/8	1/2
TA08( )06	06	16	5/8	.204	.050	.820	.190	1/32	.250	1/8	1/2
TA08( )07	06	16	5/8	.204	.060	.820	.200	1/32	.250	1/8	1/2
TA08( )08	08	24	3/4	.204	.040	.820	.180	1/32	.250	1/8	1/2
TA08( )09	08	24	3/4	.204	.050	.820	.190	1/32	.250	1/8	1/2
TA08( )10	08	24	3/4	.204	.060	.820	.200	1/32	.250	1/8	1/2

\* Note: Minimum "A" & "B" dimensions can be reversed. Tolerance for "A" & "B": +/- .015

### Standard Packaging:

Individual clamp bands and clamp bases will be bulk packaged within a common container unless otherwise specified.