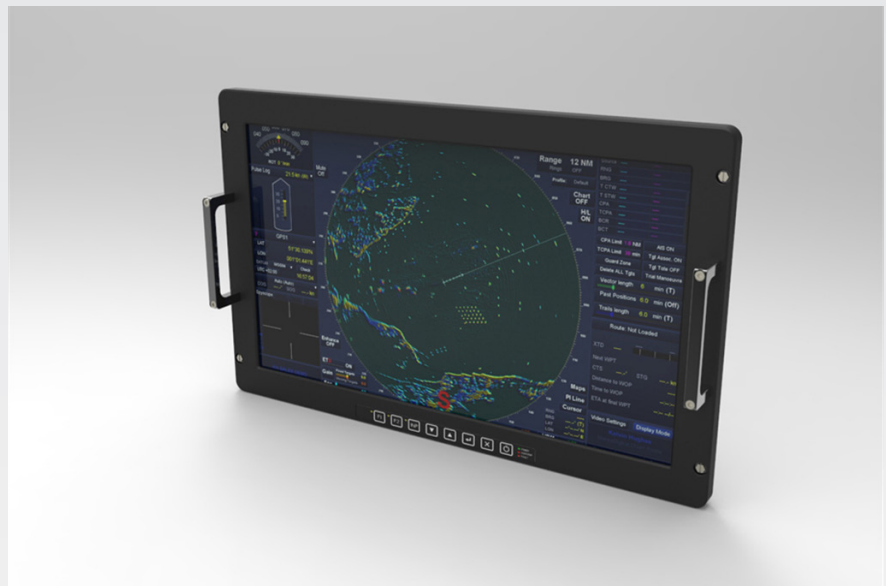


TL-358/2

23" Thin Lightweight display (1920 x 1080)



The TL-358/2 is Esterline's second-generation 23" thin and lightweight rugged display combining unmatched thinness with exceptionally low weight.

Next-generation technologies

Esterline's TL-358/2 offers the same form-fit-function as its predecessor, Esterline's TL-358. The revamped model includes the latest innovations in electronics, inputs/outputs, video processing and PCAP multi-touch technology.

The TL-358/2 features a first-class 23" full HD LCD with LED backlight, offering excellent performance in terms of brightness, crispness, dimming, contrast and viewing angle.

Several mounting options and bezel configurations are available to address virtually any mounting need in any application. Additionally, the TL-358/2 combines this high level of performance and versatility with a very competitive price/performance value.

Esterline's TL displays have been designed for application in the most extreme environments, making them suited for naval combat, army, UAV and airborne use.

Product specifications
TL-358/2

Panel size	23"		
Resolution	1920 x 1080 (FHD)		
Brightness	Typical 250 cd/m ² (72,5 fL), LED backlight		
Contrast ratio	Typical 800:1		
	Standard		Rugged option
Vibration	SHIPS	MIL-STD-167-1 Type 1	MIL-STD-167-1 Type 1
	AIRBORN	2g MIL-E-5400T Fig.2, curve IIa (sheet 2 of 3)	5g MIL-E-5400T Fig.2, curve IIIa (sheet 2 of 3)
	RANDOM		MIL-STD-810F, Meth 514.5 Proc I, comp. wheeled vehicle (C2 & C3)
Shock	MIL-STD-810F Meth 516.5 30g - 12,5ms		MIL-STD-810F Meth 516.5 30g - 12,5ms
Operational temperature	- Low temp: -10°C (immediate usable image at power up, image fully compliant with specs after 30 minutes) - Low temp: 0°C - High temp: 50°C		- Low temp: -25°C - High temp: +55°C
Storage temperature	- Low temp: -40°C - High temp: +70°C		- Low temp: -40°C - High temp: +70°C
Relative humidity	max. 95% @ 40°C		max. 95% @ 40°C
Drip proof	MIL-STD-810F Meth 506.4 proc III		MIL-STD-810F Meth 506.4 proc III
Altitude low pressure	30.000ft (187 mbar)		30.000ft (187 mbar)
Rapid decompression			MIL-STD-810F, Meth 500.4 Proc III, 8.000ft to 40.000ft in 15s
EMI / EMC	MIL-STD-461F - NAVY Applications		MIL-STD-461F - NAVY Applications / Navy fixed and Airforce Applications
FCC	FCC-A		FCC-A
Ingress protection	IPx5 on display front IPx5 on unit level with optional circular MIL connectors		
Signal inputs	2 x DVI, VGA, HD-SDI, RS-232 or RS-422, USB, Ethernet		
Power	28 VDC or 115-220VAC, per MIL-STD-704E and MIL-STD1275D guidelines		
Power consumption	45 W typical (without heating)		
Weight	± 8kg		
Options	LCD flicker compensation Touch screen Circular MIL connector interface		