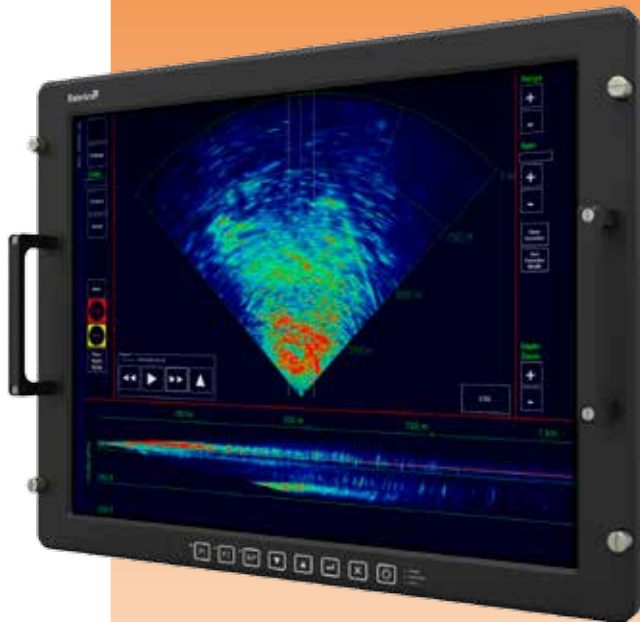


RFD-454

Rugged Airborne mission display

High resolution rugged display for Airborne applications



The RFD-454 is a Ruggedized 21,3" QXGA (2048 x 1536) high resolution display, designed and qualified for use in harsh environments such as airborne applications e.g. rotary wing.

The RFD-454 features a high bright LED backlight providing 720 cd/m² (210 fL) and allows the display to be used in situations where sunlight is directly hitting the screen.

The RFD-454 is designed and qualified to the extreme, including helicopter profile random vibration, high shock levels, sand and dust resistance, thermal shock. Combined with the patented LCD Flicker Compensation (LFC) technology it is perfectly suited for mission-critical operations in high demanding environments.

Product specification

RFD-454	
Panel size	21,3"
Resolution	2048 x 1536 QXGA
Backlight	LED
Brightness	720 cd/m ² (210 fL) typical
Dimming ratio	500:1
Contrast Ratio	800:1
Viewing angle	± 70° horizontal and vertical
Vibration operational	MIL-STD-810G Meth 514.6, Cat 14 4 hours for each axis
Shock operational	MIL-STD-810G Meth 516.6, Proc VI 20g – 23ms, 6 shocks in each axis (18 shocks total)
Operational Temperature	MIL-STD-810G Meth 501.5 and Meth 502.5, Proc II high temperature: + 55°C (131°F) low temperature: -10°C (14°F)
Storage Temperature	MIL-STD-810G Meth 501.5 and Meth 502.5, Proc I high temperature: + 70°C (158°F) low temperature: - 40°C (-40°F)
Temperature shock	MIL-STD-810G Meth 503.5, Proc I & II 3 cycles between -40°C and +70°C
Relative Humidity	MIL-STD-810G Meth 507.5, Proc II max 95% @ 60°C (140°F)
Altitude low pressure	MIL-STD-810G Meth 500.5, Proc I & II operating: up to 5,000ft (843mbar) non-operating: up to 45,000ft (147mbar)
Salt Fog	MIL-STD-810G Meth 509.5 on display level
Sand & Dust	MIL-STD-810G Meth 510.5, Proc I & II on display level
Fungus	MIL-STD-810G Meth 508.6 Fungus inert materials are selected as much as possible
EMI / EMC	MIL-STD-461E - Aircraft applications (Fixed wing internal >=25m Nose to tail)
Signal Inputs	1 x dual link DVI-D
Power	110 - 230VAC 40 - 440Hz
Power consumption	maximum 115W (at full display brightness)
Controls	OSD/web interface
Indicators	Green 'Power' LED, Red 'Fault' LED
Weight	Max 11.5 kg (25.35 lbs)
Finishing	Bezel color: Black RAL 9005 Surface treatment: ROHS compliant Chromated Cr3 (MIL-DTL-5541 type II Class 1A)

Approved for public release; distribution is unlimited.

© 2016 Esterline Technologies Corporation.
"Codis" is a trademark of Esterline Technologies Corporation.

APR16

President Kennedypark 35A
8500 Kortrijk, Belgium
Tel: +32 56 27 2000
sales.codis@esterline.be
www.esterline.com/codis

Esterline
Featuring CODIS Products