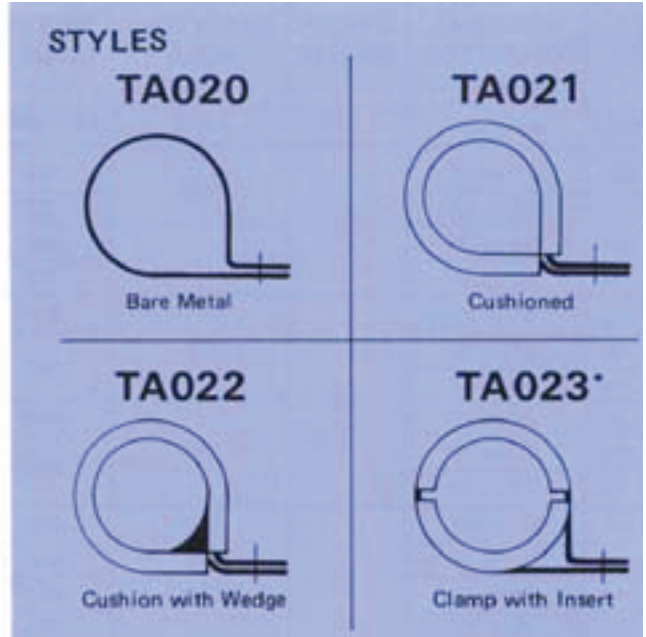


Bulletin 200: Clamp Single Loop Style

FAA TSO-C171



Part Numbering System

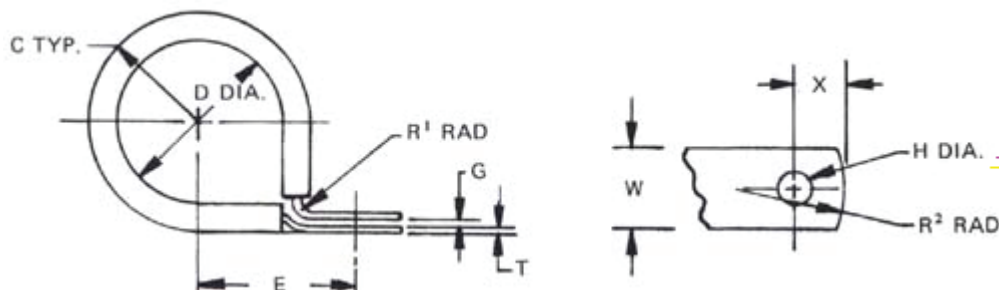
ex: **TA02213HO_16HB** = Loop style with silicone cushion and wedge, stainless steel for tube size 1.00" diameter.

Breakdown:

Part number shown below is separated for clarity. When ordering, do not show spaces.

TA022 13 HO _ 16 HB

- TA022 = Basic Part Number
- 13 = Design Detail (See below)
- HO = Metal Identification (See Bulletin 120)
- _ = Foot Reinforcing Tab/Code (R) or Snap-Loc Foot/Code (L)
(Optional--omit if neither req. see Bulletin 130)
- 16 = Diameter in 1/16" Increments
- HB = Cushion Code or Plastic Insert Code (See Bulletins 120 and 130)



* For specifying Style TA023, with elastomer insert, consult TA Sales Representative for details.

Diagram ID ▶	Nominal Dia. expressed in 1/16" increments	Strap Width	Mounting Hole	Metal Gauge	Mounting Dimension D/2+	Clearance D/2+	Gap	Cut Off	Rad	
	D								W	H
Tolerances ▶		+/- .003	+/- .005	Per Spec.	+/- .015	Ref.	Ref.	+/- .010	+/- .015	+/- .015
Part Number										
TA02()01	01 to 20	1/4	.128	.020	.212	.110	1/16	.156	1/16	1/4
02	02 to 20	1/4	.128	.030	.224	.120	1/16	.156	1/16	1/4
03	01 to 20	1/4	.147	.020	.228	.110	1/16	.188	1/16	3/8
04	02 to 20	1/4	.147	.030	.240	.120	1/16	.188	1/16	3/8
TA02()05	01 to 20	3/8	.173	.020	.310	.130	1/16	.188	1/16	3/8
06	02 to 20	3/8	.173	.030	.322	.140	1/16	.188	1/16	3/8
07	21 to 32	3/8	.173	.030	.322	.140	1/8	.188	1/16	3/8
08	01 to 20	3/8	.204	.020	.310	.130	1/16	.188	1/16	3/8
09	02 to 20	3/8	.204	.030	.322	.140	1/16	.188	1/16	3/8
10	21 to 32	3/8	.204	.030	.322	.140	1/8	.188	1/16	3/8
TA02()11	02 to 20	1/2	.204	.020	.390	.160	1/16	.218	1/16	3/8
12	02 to 24	1/2	.204	.030	.402	.170	1/16	.218	1/16	3/8
13	09 to 48	1/2	.204	.040	.460	.180	3/32	.218	1/16	3/8
14	11 to 64	1/2	.204	.050	.490	.190	3/32	.218	1/8	3/8
15	33 to 96	1/2	.204	.060	.534	.200	1/8	.218	1/8	3/8
16	02 to 12	1/2	.281	.020	.503	.160	1/16	.312	1/16	1/2
17	02 to 24	1/2	.281	.030	.514	.170	1/16	.312	1/16	1/2
18	12 to 48	1/2	.281	.040	.524	.180	1/8	.312	1/16	1/2
19	17 to 64	1/2	.281	.050	.534	.190	1/8	.312	1/8	1/2
20	33 to 96	1/2	.281	.060	.544	.200	1/8	.312	1/8	1/2
TA02()21	02 to 16	5/8	.281	.030	.514	.170	1/16	.312	1/16	1/2
22	17 to 96	5/8	.281	.050	.534	.190	1/8	.312	7/64	1/2
23	02 to 16	5/8	.344	.030	.514	.170	1/16	.312	1/16	1/2
24	17 to 96	5/8	.344	.050	.534	.190	1/8	.312	7/64	1/2
25	02 to 16	5/8	.406	.030	.514	.170	1/16	.312	1/16	1/2
26	17 to 96	5/8	.406	.050	.534	.190	1/8	.312	7/64	1/2
TA02()27	02 to 10	3/4	.204	.030	.470	.170	1/16	.250	1/16	1/2
28	11 to 20	3/4	.204	.040	.480	.180	1/8	.250	1/16	1/2
29	21 to 64	3/4	.204	.050	.490	.190	1/8	.250	1/8	1/2
30	02 to 16	3/4	.281	.030	.514	.170	1/16	.312	1/16	1/2
31	17 to 96	3/4	.281	.050	.534	.190	1/8	.312	1/8	1/2
32	02 to 16	3/4	.344	.030	.514	.170	1/16	.312	1/16	1/2
33	17 to 96	3/4	.344	.050	.534	.190	1/8	.312	1/8	1/2
34	02 to 16	3/4	.406	.030	.514	.170	1/16	.312	1/16	1/2
35	17 to 96	3/4	.406	.050	.534	.190	1/8	.312	1/8	1/2
36	02 to 16	3/4	.531	.030	.623	.170	1/16	.375	1/16	5/8
37	17 to 96	3/4	.531	.050	.643	.190	1/8	.375	1/8	5/8
TA02()38	02 to 16	1	.531	.030	.623	.170	1/16	.375	1/16	5/8
39	17 to 96	1	.531	.050	.643	.190	1/8	.375	1/8	5/8

This document is the property of Kirkhill-TA and is conveyed with the express condition that it and the information contained in it are not to be used, disclosed or reproduced in whole or in part, for any purpose without the express written consent of Kirkhill-TA; and that no right is granted to disclose or so use any information contained in said document. These restrictions do not apply to vendor proprietary parts.