

4

3



2

1

- ① 1. LAMPS: INCANDESCENT, SUBMINIATURE, T1, SUB-MIDGET FLANGED BASE
 - MS3338-6839, AGED AND SELECTED PER KORRY DWG 000-040-159 (28 VDC).
 - QL 718AS15 (5 VDC)

△ BASE ASSEMBLY TO BE PART MARKED WITH THE FOLLOWING INFORMATION AS SHOWN: (LOCATION OPTIONAL)

- A) "TOP"
- B) "KORRY"
- C) SOURCE CODE
- D) DATE CODE
- E) KORRY BASE ASSEMBLY PART NUMBER
- F) KORRY SWITCH ASSEMBLY PART NUMBER (OMIT WHEN BASE IS ORDERED SEPARATELY)

- 3. CAP ASSEMBLY TO BE PART MARKED WITH THE FOLLOWING INFORMATION: (LOCATION OPTIONAL, EXCEPT SHALL NOT BE VISIBLE WHEN INSTALLED IN BASE.)

- (REFERENCE 10481 ORIENTATION)
- A) KORRY CAP ASSEMBLY PART NUMBER
- B) "KORRY"
- C) SOURCE CODE
- D) DATE CODE

- ① 4. SWITCH ACTION:
 - A) ALTERNATE: WHEN ACTUATED BY DEPRESSING CAP, SWITCH CONTACTS ARE MAINTAINED UNTIL ACTUATED AGAIN.
 - B) MOMENTARY: WHEN ACTUATED BY DEPRESSING CAP, SWITCH CONTACTS ARE MAINTAINED UNTIL CAP IS RELEASED.
 - C) INDICATOR: NO SWITCHING CONFIGURATION.

- 5. SUBMINIATURE SWITCH CONTACT MATERIAL / RATING:
 - A) GOLD, 1 AMPERE AT 28 VOLTS DC (RESISTIVE LOAD)
 - B) SILVER, 7 AMPERES AT 28 VOLTS DC (RESISTIVE LOAD)

- ① 6. CHARACTER TYPE:
 - GORTON CONDENSED

△ MOUNTING LUG LOCATION SHOWN FOR REFERENCE.

- 8. MOUNTING ASSEMBLY, WHEN ORDERED SEPARATELY, SHALL BE BAGGED AND TAGGED WITH THE FOLLOWING INFORMATION:
 - A) KORRY PART NUMBER

REVISIONS				
ZONE	LTR	DESCRIPTION	DATE (YR-MO-DA)	APPROVED
	A	REDRAWN WITH CHANGES PER ECF# 73212.	CLA 95-10-18	BAKKER
	B	REDRAWN WITH CHANGES PER ECF# 73236.	CLA 95-10-31	BAKKER
	C	REDRAWN WITH CHANGES PER KCR# 75442.	S.H. 96/09/03	BAKKER
	D	REDRAWN WITH CHANGES PER KCR# 79635.	CLA 98-01-21	S. HANSEN 98/01/23
	E	REDRAWN WITH CHANGES PER ECO# 84393.	CLA 99-11-01	S. HANSEN 99-11-01
	F	REDRAWN WITH CHANGES PER ECO# 85407.	CLA 00-01-27	S. HANSEN 00-02-02
	G	REDRAWN WITH CHANGES PER ECO# 97677	CLA 06-04-25	<i>C.A.</i>

RELEASED BY DOCUMENT CENTER
FOR ONLINE VIEWING
CHECK REVISION IF PRINTED

NOTICE: This document contains technical data subject to U.S. export controls. Based on jurisdictional analysis and classification/category analysis CAT-427-428
 This technical data defines or pertains to a product that is:
 Subject to: EAR ECCN EAR99 Subject to: EAR ECCN EAR99
 This analysis is provided to assist recipients of this document in compliance with U.S. Export Laws and Regulations.

SEE SEPARATE PARTS LIST

REV STATUS OF SHEETS	REV SHEET	G 1	E 2	E 3	G 4	E 5	E 6	E 7	E 8	F 9	E 10						
CONTRACT NUMBER		QUICK SWITCH										DESIGN ACTIVITY					
CONTRACTOR		CONTRACTOR										Esterline KORRY Esterline Technologies Instrumentation Group Korry Electronics Co. 501 Dexter Avenue North Seattle, WA 98105					
DRAWN BY		C. ANDERSON										DATE (YR-MO-DA)					
CHECKER		L.V.T. 7/29/94										ENGINEER					
DRAWING APPROVAL (PROJ MGR)		BRYAN BAKKER 8/3/94										TITLE					
DRAWING APPROVAL (DSGN ENGR MGR)		SERGIO V. 94-09-30										SWITCH ASSEMBLY, LIGHTED, 427					
SIZE	CAGE CODE	DRAWING NO										REV					
C	81590	17479										G					
SCALE	NONE	UNIT WEIGHT										SHEET 1 OF 10					

D:\CARRIE\DSV427

DATABASE AND USER	LAYOUT	NEXT ASSY	USED IN
CAD INFORMATION			
APPLICATION			
MATL ENGR S.B. 94-07-30	REG ENGR C. GARDIN 7/29/94	QUAL ENGR A. SHENG 7/29/94	

4

3



2

1

①

4

3

2

DWG. NO.

SH.

REV.

1

REVISIONS				
ZONE	LTR	DESCRIPTION	DATE (YR-MO-DA)	APPROVED

LEGEND TYPES	
1B	LEGEND NOT VISIBLE UNTIL ILLUMINATED; LIGHTED LETTERS ON OPAQUE BLACK BACKGROUND. (HIDDEN LEGEND)
1C	LEGEND NOT VISIBLE UNTIL ILLUMINATED; LIGHTED BACKGROUND WITH OPAQUE LETTERS. (HIDDEN LEGEND)
2F	OPAQUE WHITE LETTERS VISIBLE AT ALL TIMES ON DARK BACKGROUND. BACKGROUND WHEN ILLUMINATED SHOWS COLOR.
2G2	WHITE LETTERS VISIBLE AT ALL TIMES ON OPAQUE BLACK BACKGROUND. LETTERS WHEN ILLUMINATED SHOW COLOR.

TABLE 1
LEGEND TYPES

DATABASE AND USER		LAYOUT	SIZE	CAGE CODE	DWG NO.	REV
CAD INFORMATION			C	81590	17479	E
			SCALE	2/1	SHEET	2

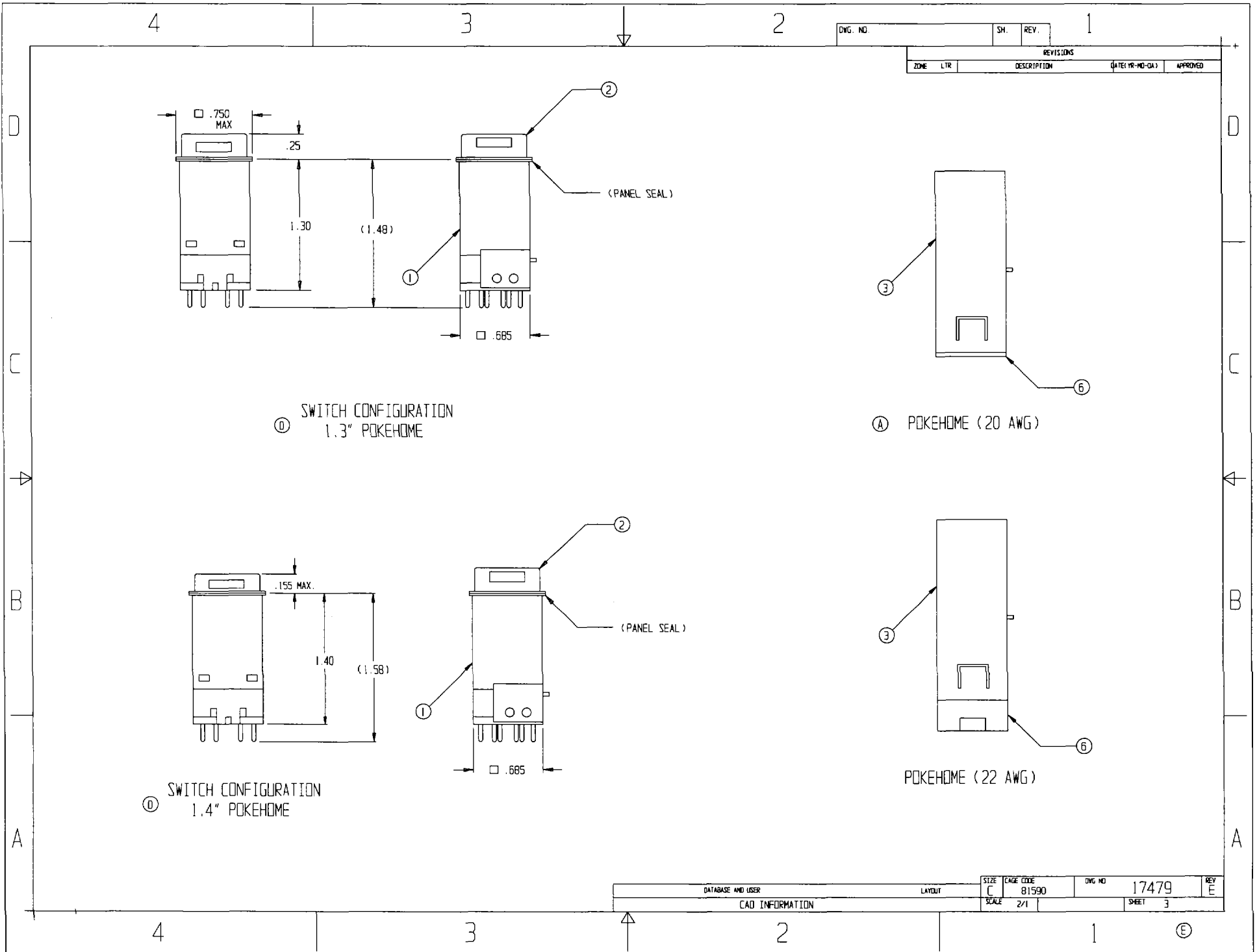
4

3

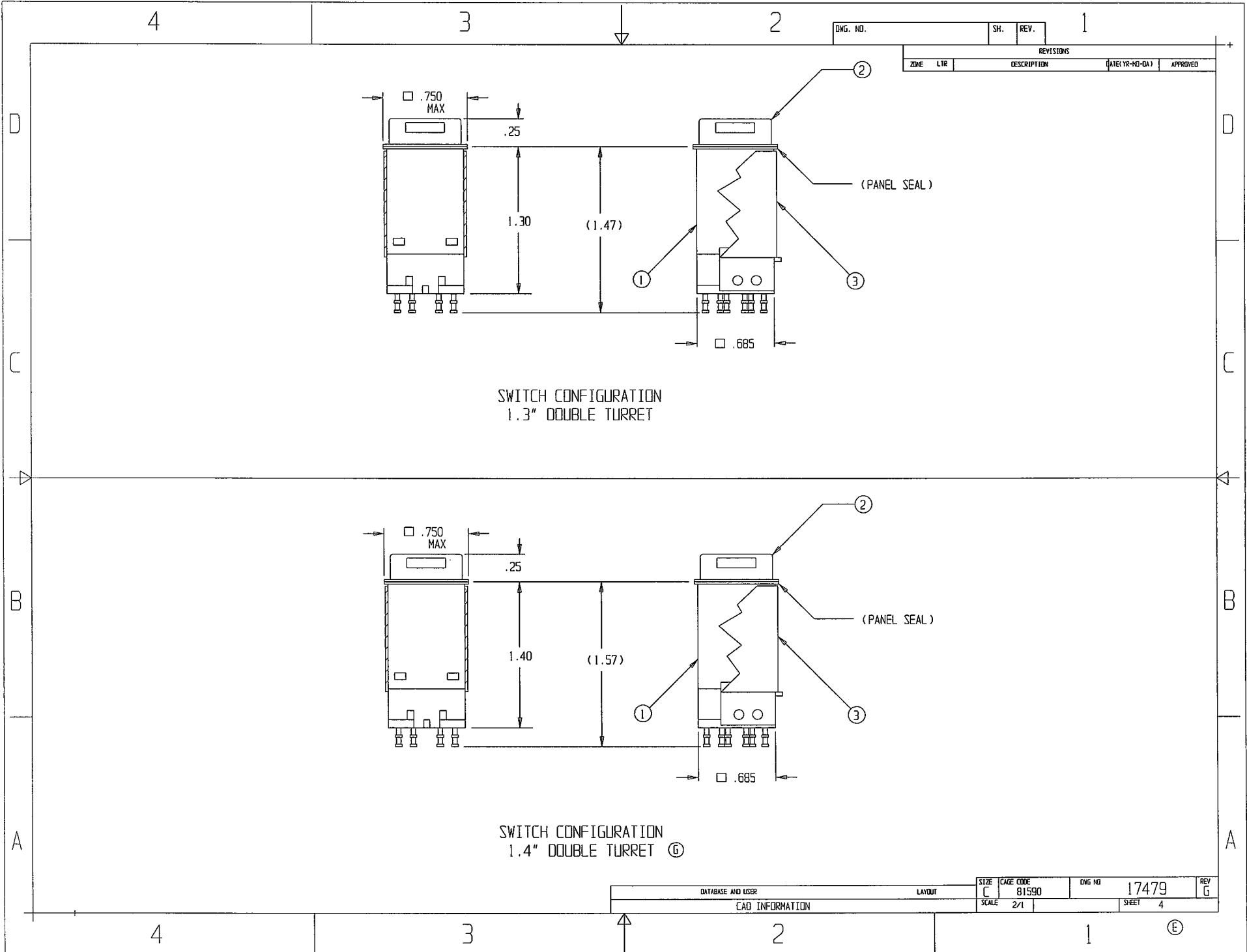
2

1

E



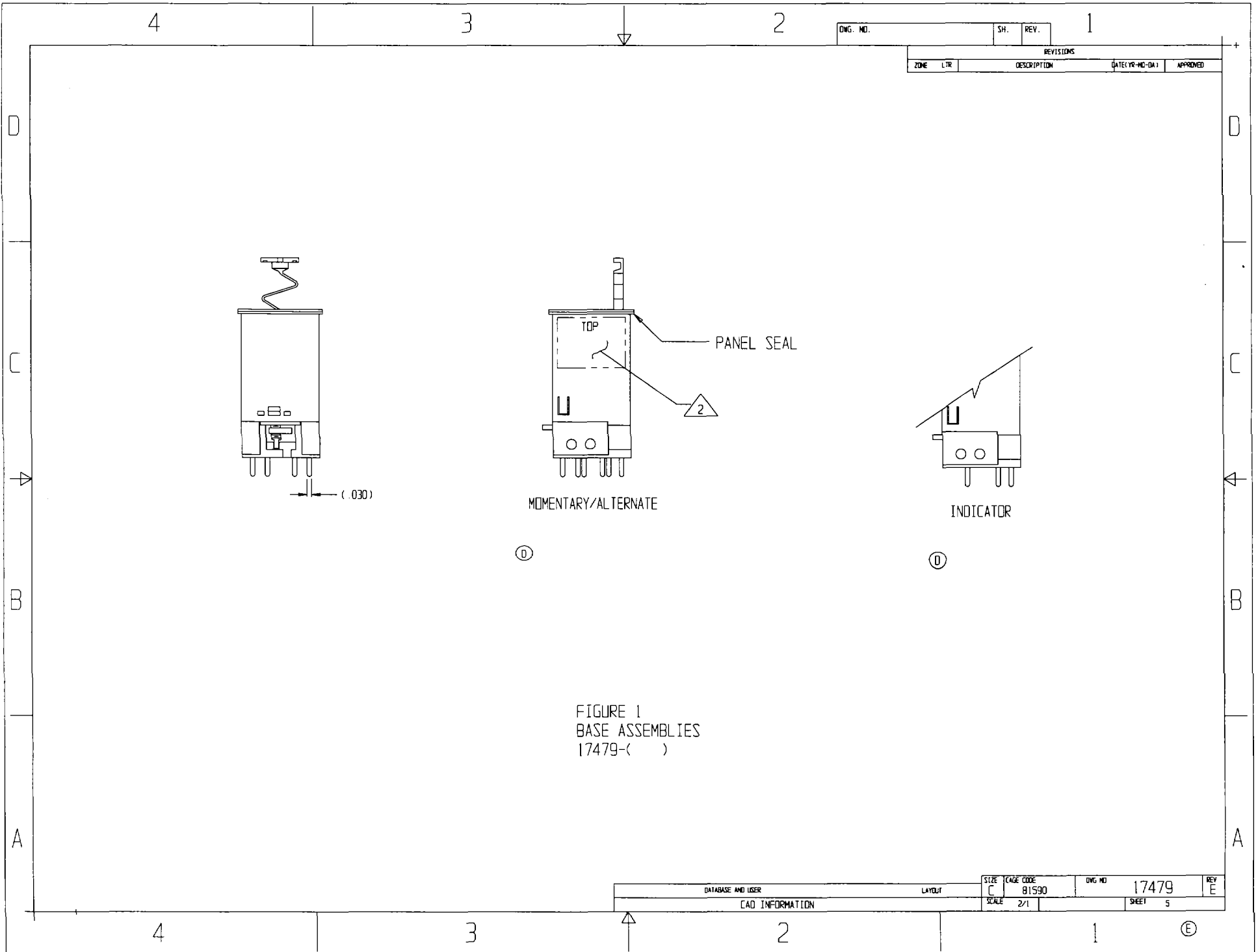
NOTICE: Use or disclosure of information on this sheet is subject to the restrictions on the first sheet of this document.



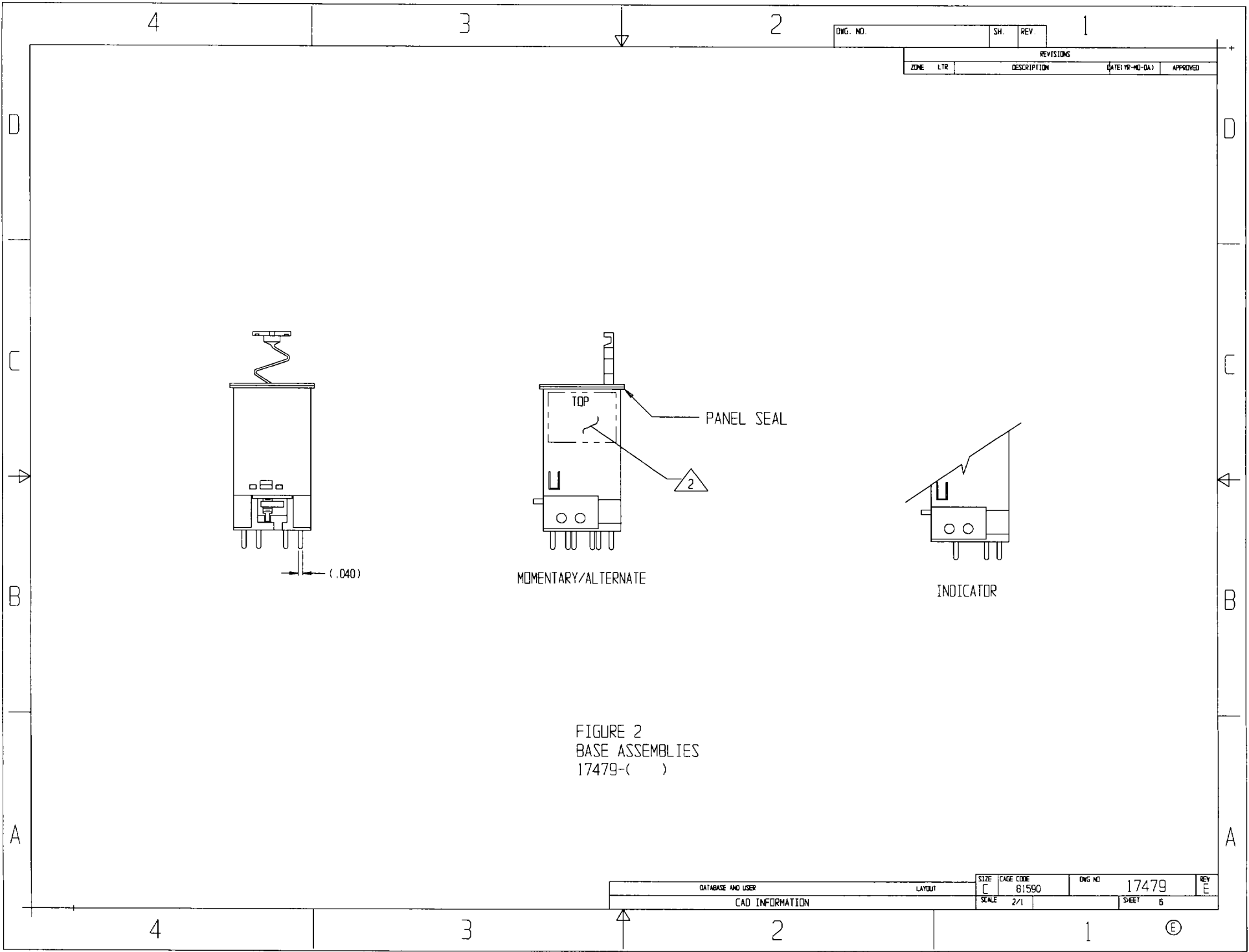
DNG. NO.		SH.	REV.	1
REVISIONS				
ZONE	LTR	DESCRIPTION	DATE(YR-MO-DA)	APPROVED

DATABASE AND USER	LAYOUT	SIZE C	CAGE CODE 81590	DWG NO 17479	REV G
CAD INFORMATION			SCALE 2/1	SHEET 4	

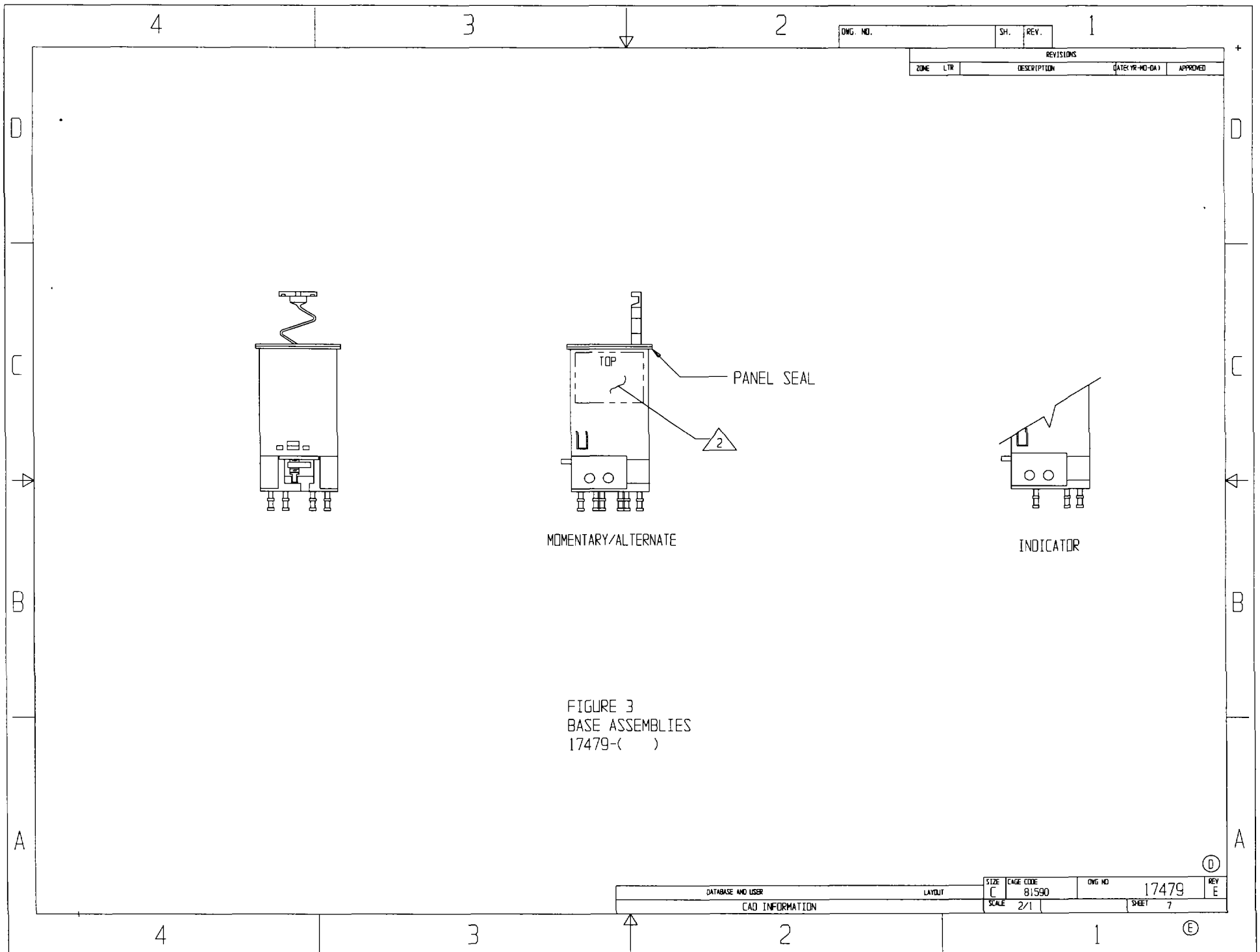
NOTICE: Use or disclosure of information on this sheet is subject to the restrictions on the first sheet of this document.



NOTICE: Use or disclosure of information on this sheet is subject to the restrictions on the first sheet of this document.



NOTICE: Use or disclosure of information on this sheet is subject to the restrictions on the first sheet of this document.



NOTICE: Use or disclosure of information on this sheet is subject to the restrictions on the first sheet of this document.

4

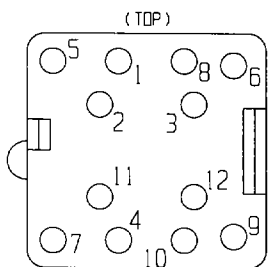
3

2

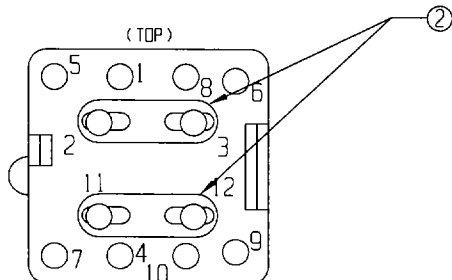
1

DWG. NO. SH. REV.

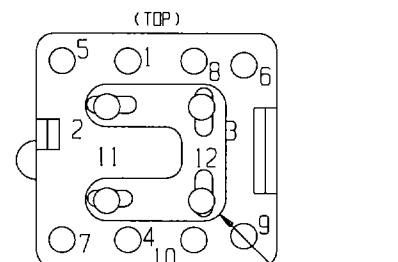
REVISIONS				
ZONE	LTR	DESCRIPTION	DATE (YR-MO-DA)	APPROVED



PIN-OUT CONFIGURATION TYPE 1



PIN-OUT CONFIGURATION TYPE 2



PIN-OUT CONFIGURATION TYPE 3

D

D

C

C

B

B

A

A

4

3

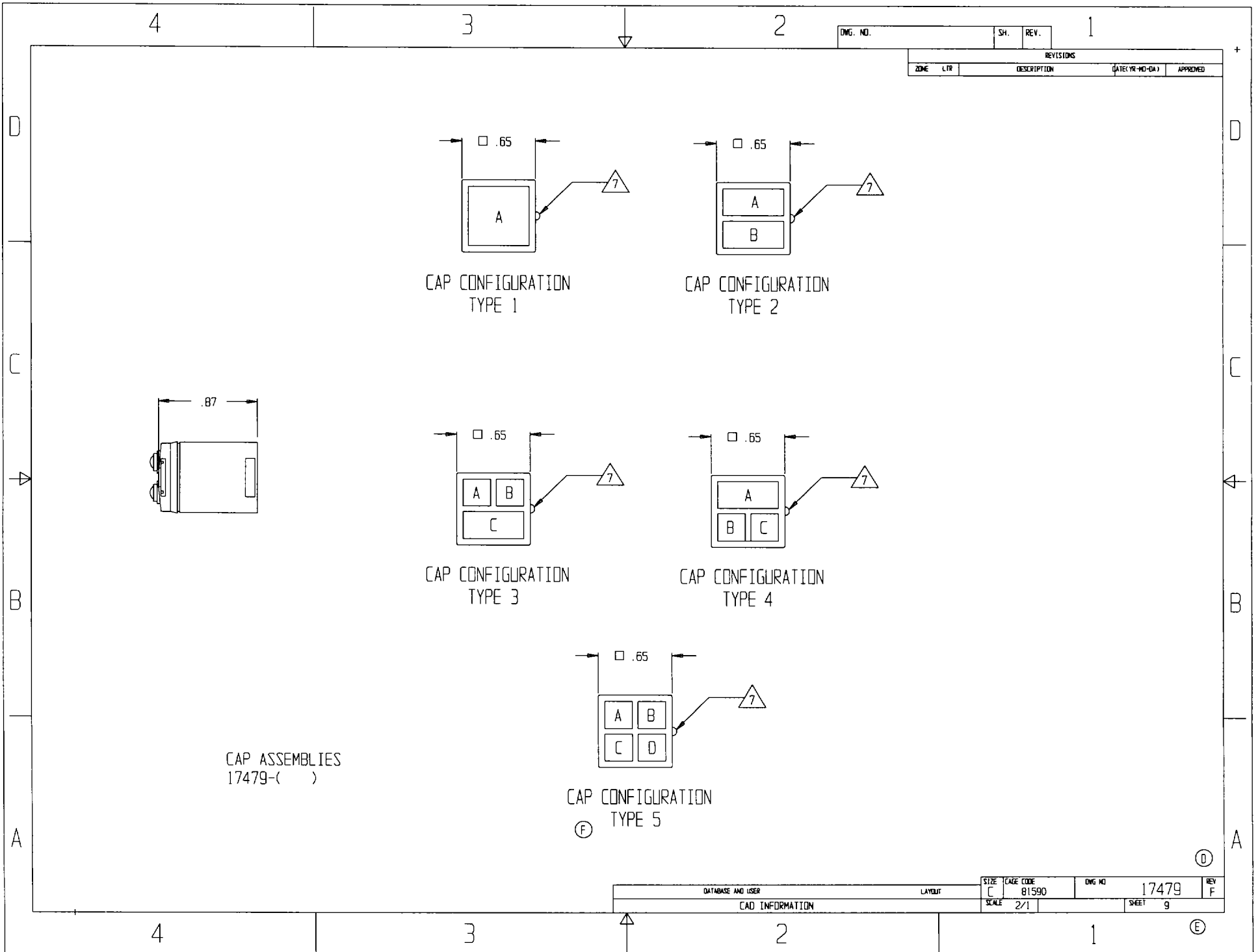
2

1

ⓔ

DATABASE AND USER		LAYOUT	SIZE C	CAGE CODE 81590	DWG. NO. 17479	REV E
CAD INFORMATION			SCALE 2/1	SHEET B		

NOTICE: Use or disclosure of information on this sheet is subject to the restrictions on the first sheet of this document.



NOTICE: Use or disclosure of information on this sheet is subject to the restrictions on the first sheet of this document.

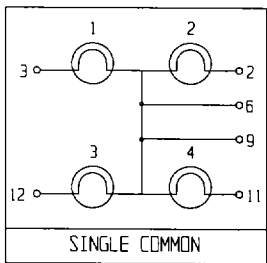
4

3

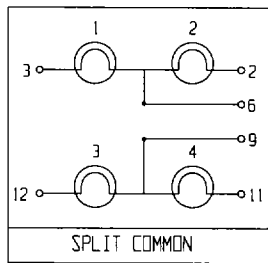
2

1

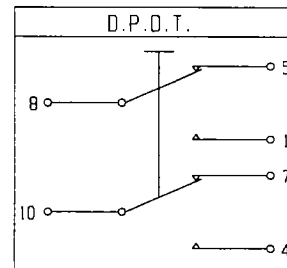
DWG. NO.		SH.	REV.	1
REVISIONS				
ZONE	LTR	DESCRIPTION	DATE (YR-MO-DA)	APPROVED



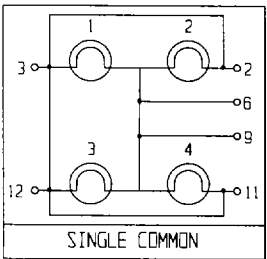
LAMP CIRCUIT
TYPE 1
①



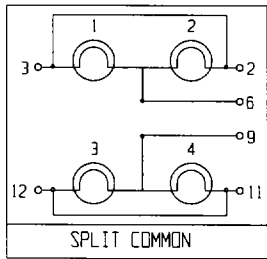
LAMP CIRCUIT
TYPE 2
①



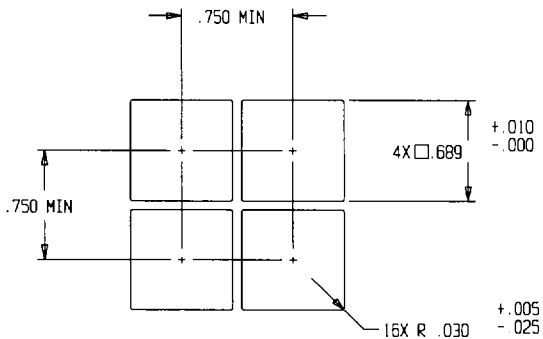
SWITCH CIRCUIT/NUMBERING



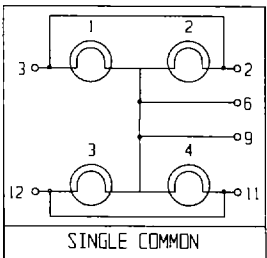
LAMP CIRCUIT
TYPE 3
①



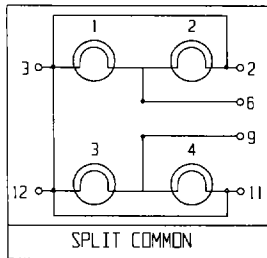
LAMP CIRCUIT
TYPE 4
①



RECOMMENDED
PANEL CUTOUTS



LAMP CIRCUIT
TYPE 5



LAMP CIRCUIT
TYPE 6

4

3

2

1

①

DATABASE AND USER	LAYOUT	SIZE C	CAGE CODE 81590	DWG NO 17479	REV E
CAD INFORMATION		SCALE 2/1	SHEET 10		