

# THE NEW, IMPROVED KORRY 5/8-INCH QUICK SWITCH. THE QUICKEST DELIVERY. THE LOWEST PRICE.

High performance  
delivered fast

Any  
configuration  
in four weeks,  
including  
NVIS!



Unbeatable  
pricing

Fixed  
unit price  
under \$400  
for any  
configuration,  
any  
quantity!

The industry's star  
5/8-inch switch

Three times more units shipped  
than the closest competing product!

The leading 5/8-inch switch in four weeks for less than \$400? You're not dreaming.

Our Korry Quick Switch program gets the 5/8-inch switches you need in your hands at the most competitive price.

We make it easy to do business: simple-to-procure, high-performance switches in hundreds of combinations with the lowest total acquisition costs in the industry.

Finally, when you order a Korry Quick Switch, you get the Korry reputation. The peace of mind of working with a reliable leader in aerospace switching products.

See more details on the back.

For more information about the Korry 5/8-inch Quick Switch, visit [www.esterline.com/controlsystems/Korry](http://www.esterline.com/controlsystems/Korry) or email us at [korry.techinfo@esterline.com](mailto:korry.techinfo@esterline.com).

# Introducing the new, improved Korry 5/8 inch Quick Switch program

Choose from many configurations for virtually any application

Switches are customizable within the following parameters. Countless combinations are possible:

- Korry 389 with four single-pole, double-throw (SPDT) sub-miniature switches, 5-pin and 6-pin lamp-circuit configurations, non-NVIS and NVIS illumination featuring a 28 VDC, voltage-control dimming LED circuit. Key features include:
  - Bipolar LED circuitry
  - Voltage-surge protection
  - Lightning-strike protection
  - Reverse-voltage protection
- Korry 427 2-SPDT and 428 4-SPDT sub-miniature switch configurations featuring 5 VDC and 28 VDC T-1 incandescent lamps.

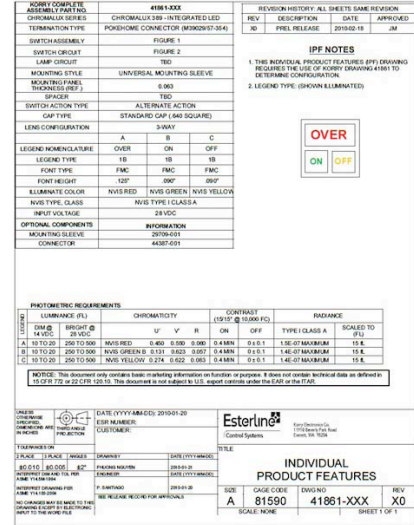
These configurations are available with:

- Alternate/momentary/indicator options
- Universal mounting sleeve with connector module interface only
- Single-common and split-common lamp-circuit options
- Environmental compliance: baseline qualification per MIL-PRF-22885/109 with additional RTCA/DO-160 environmental and EMC testing
- All display configurations (full, horizontal/vertical split, 3-way and 4-way splits)
- Extensive font library
- All legend types below:

	OFF	ON
<b>S (1B)</b> Hidden legend. Letters not visible until illuminated. Lighted colored letters on opaque black background when energized.		
<b>B (1C)</b> Hidden legend. Letters not visible until illuminated. Lighted colored background with opaque black letters when energized.		
<b>W (2D)</b> Opaque black letters on white background. Background shows color when energized.		
<b>N (2G2)</b> White letters on opaque black background. Letters show color when energized.		
<b>C (2B)</b> Opaque black letters on colored background. Lighted colored background when energized.		

We make it easy to define and order the switches you need

A library of interactive specifications in MS Word format – Individual Product Features (IPF) files – lets you quickly create a complete engineering definition of your desired configuration that streamlines the ordering process. See the example, right.



This library of IPF files is available on our website or from your local Esterline Control Systems sales representative.

Visit [www.esterline.com/controlsystems/Korry](http://www.esterline.com/controlsystems/Korry) for downloads or to find your local rep.

Digital models of any Quick Switch product are also available in a variety of digital formats, such as .stp and .iges.

We can assign customer-specific part numbers to configurations you plan on reordering, to simplify the process in the future.

For more information about the Korry 5/8-inch Quick Switch, visit [www.esterline.com/controlsystems/Korry](http://www.esterline.com/controlsystems/Korry) or email us at [korry.techinfo@esterline.com](mailto:korry.techinfo@esterline.com).

Esterline  
 11910 Beverly Park Road  
 Everett, WA 98204  
 425-297-9700  
[www.esterline.com](http://www.esterline.com)

