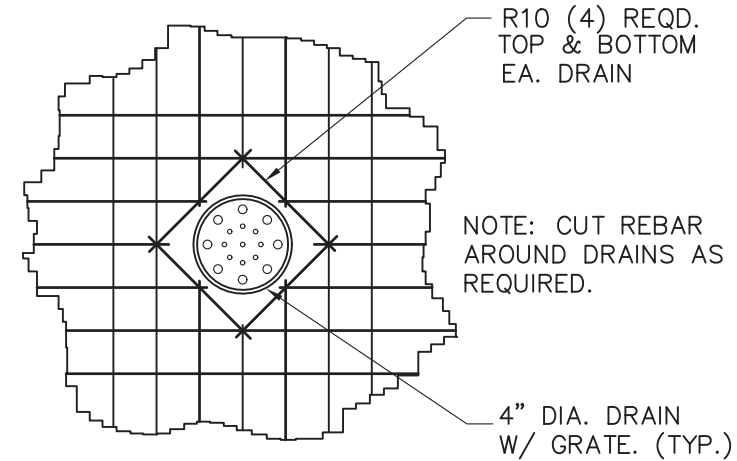
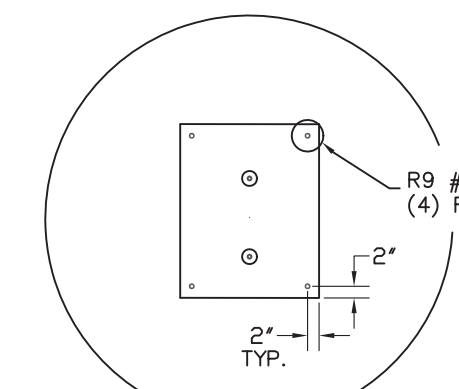


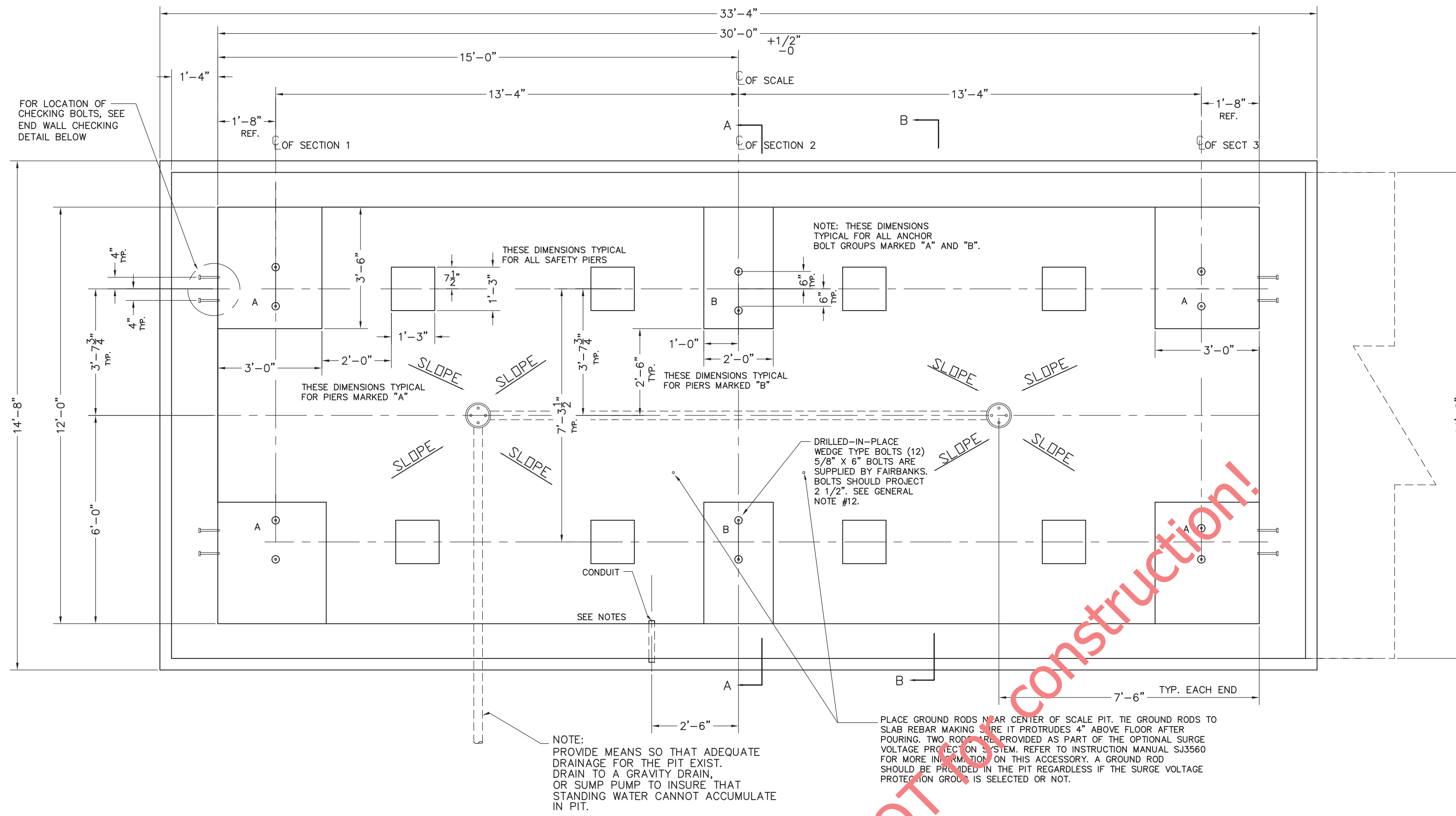
SAFETY PIER REINFORCING



DRAIN DETAIL



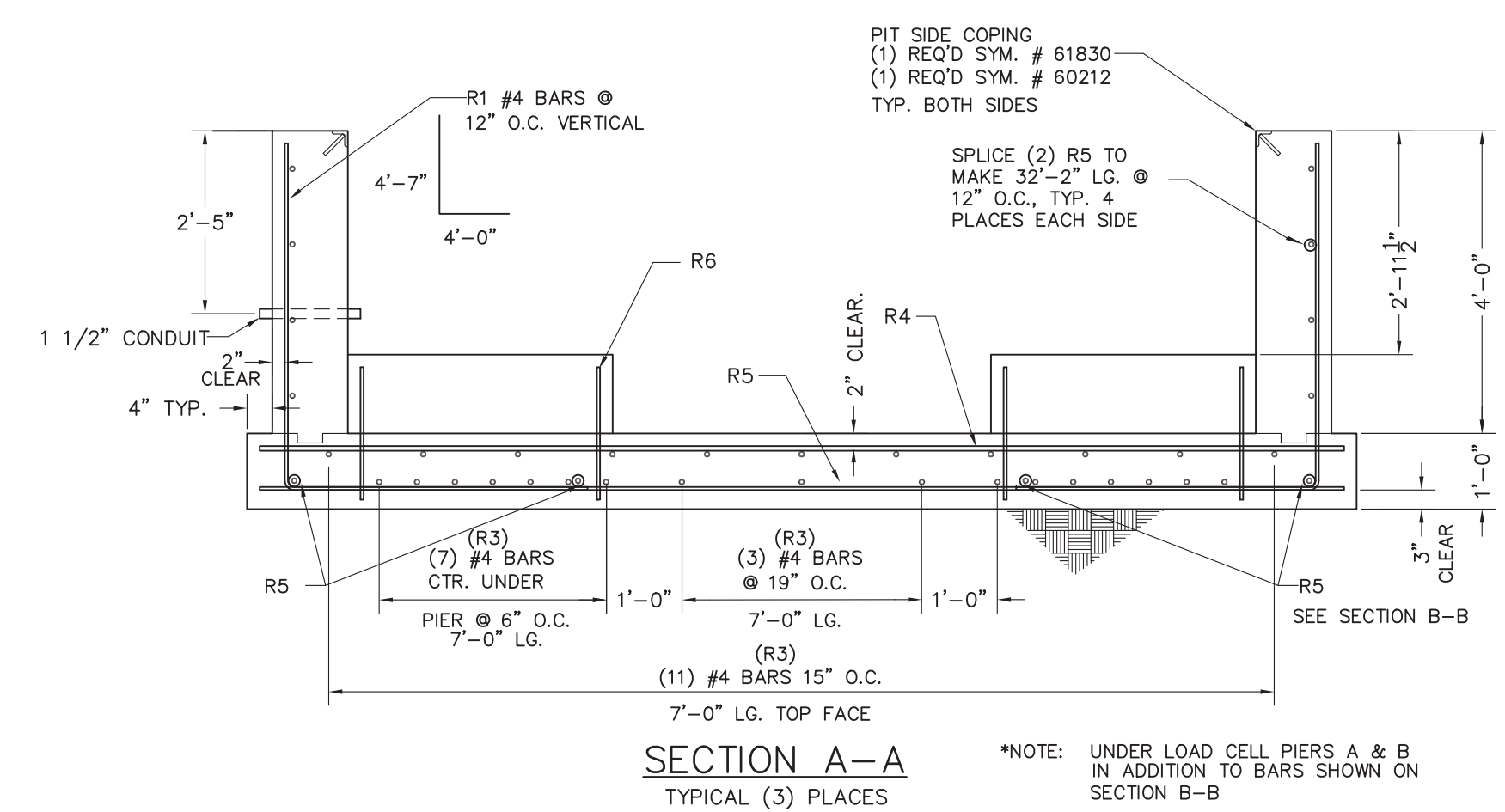
LOAD CELL PIER REINFORCING
SEE SCHEDULE FOR LENGTH



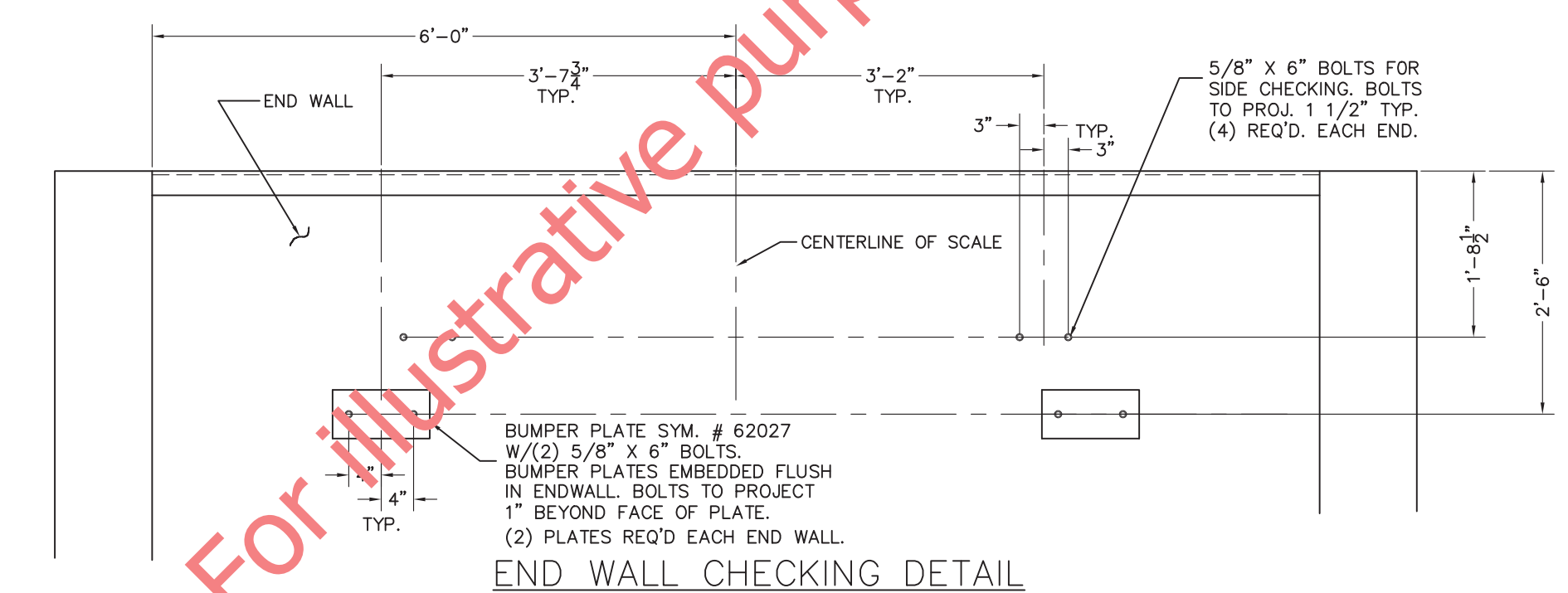
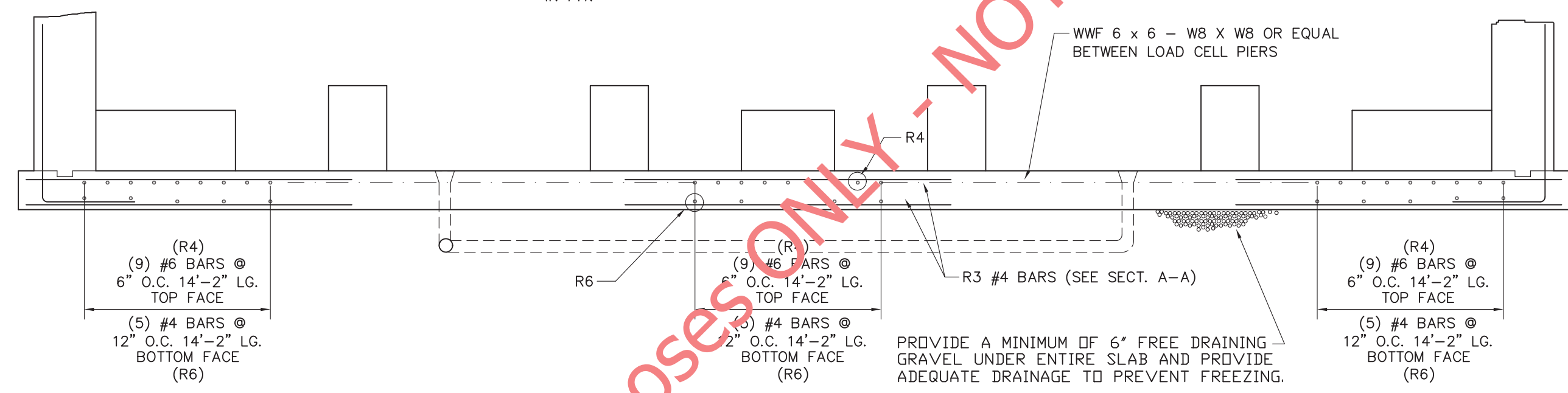
REINFORCING BAR SCHEDULE					
SYM.	QTY.	SIZE	LENGTH	BENDING	WEIGHT
R1	64	#4	8'-7"	4'-7" 4'-0"	367
R2	26	#6	5'-10"	3'-10" 24"	228
R3	84	#4	7'-0"	7'-0"	393
R4	27	#6	14'-2"	14'-2"	575
R5	24	#4	18'-0"	18'-0"	289
R6	15	#4	14'-2"	14'-2"	142
R7	6	#4	13'-6"	13'-6"	54
R8	16	#4	4'-0"	2'-0" 2'-0"	43
R9	56	#4	1'-7"	1'-7"	59
R10	16	#4	2'-0"	2'-0"	22
REINFORCING BAR SCHEDULE FOR APPROACHES					
R11	28	#4	10'-0"	10'-0"	187
R12	22	#4	13'-6"	13'-6"	198
TOTAL					2,557

PLUS APPROX. 259 SQUARE FEET OF WWF 6 x 6 - W8 X W8

- GENERAL NOTES
- EXCAVATION, FOUNDATION FORMS, REBARS, AND CONCRETE IS TO BE FURNISHED BY CONTRACTOR OR CUSTOMER.
 - REINFORCING BARS ARE TO EQUAL ASTM A615, GRADE 50 OR 60. BEND BARS COLD TO CONFORM TO DETAILS. REMOVE SCALE, LOOSE FLAKY RUST, DIRT, AND OTHER COATING THAT WOULD IMPAIR BONDING. SPACE BARS PROPERLY AND TIE SECURELY IN POSITION BEFORE PLACING CONCRETE. TACK WELDING TO KEEP REINFORCING IN PLACE IS NOT PERMITTED.
 - MATERIAL AND WORKMANSHIP TO BE IN ACCORDANCE WITH CURRENT AMERICAN CONCRETE INSTITUTE (ACI) CODE REQUIREMENTS. ALL CONCRETE TO BE A MINIMUM OF 3000 P.S.I. @ 28 DAYS.
 - 1500 P.S.F. MINIMUM SOIL BEARING CAPACITY IS REQUIRED. THE DESIGN IS ADEQUATE FOR HIGHWAY SURCHARGE OR 300 P.S.F. ADJACENT TO PIT WALLS.
 - REFER TO MANUAL FOR MORE DETAILED INSTRUCTIONS ON PIT CONSTRUCTION RECOMMENDATIONS.
 - WORK FROM CENTERLINES WHEN ERECTING FORMS AND PLACING FOUNDATION BOLTS. PLACE BOLTS TO WITHIN $\pm 1/8"$ OF POSITIONS INDICATED ON DRAWINGS. (BOLTS MUST BE PLACED WITHIN $1/2"$ OF TOTAL DIMENSIONS FROM CENTERLINE OF SCALE.)
 - FOR SETTING PLAN, SEE DRAWING D91386-SP.
 - CLEARANCE DIMENSION FOR BOTTOM OF MAIN GIRDER TO PIT FLOOR IS 1'-9".
 - VARIOUS STATE WEIGHTS AND MEASURES AUTHORITIES HAVE REGULATIONS, PARTICULARLY IN REGARD TO PIT DEPTH AND APPROACHES, AFFECTING PIT AND INSTALLATION. THE PIT CONTRACTOR IS RESPONSIBLE TO VERIFY THAT THIS PLAN AND INSTALLATION MEETS LOCAL MINIMUM REQUIREMENTS. FOR ASSISTANCE, CONTACT NEAREST FAIRBANKS SCALE OFFICE.
 - SOME STATES REQUIRE THAT CONCRETE PIERS BE POUR MONOLITHIC WITH SIDE WALLS. (RECOMMENDED METHOD)
 - SUITABLE CONDUIT FOR LOW VOLTAGE CONDUCTOR SHIELDED CABLE MUST PASS THRU THE PIT WALL AT ANY POINT ABOVE PIER TOPS THAT IS CONVENIENT. CONDUIT MUST EXTEND BEYOND PIT WALL A MINIMUM OF 2'. FOR RUNS OF CONDUIT UP TO 50'-0" IN LENGTH, USE 1 1/2" CONDUIT. AVOID RUNNING CABLE IN CLOSE PROXIMITY TO HIGH VOLTAGE LINES. IF AS IS REQUIRED IN PIT, IT SHALL NOT RUN CLOSER THAN 24" IN PARALLEL TO ANY CELL CABLE.
 - CAST-IN-PLACE ANCHOR BOLTS ARE NOT REQUIRED AT PIERS, BUT ARE REQUIRED IN THE END WALLS FOR CHECKING SYSTEM.
 - TOPS OF ALL PIERS MARKED 'A' MUST BE SMOOTH, FLAT, AND LEVEL FOR LOADCELL BASE PLATES TO BEAR PROPERLY.



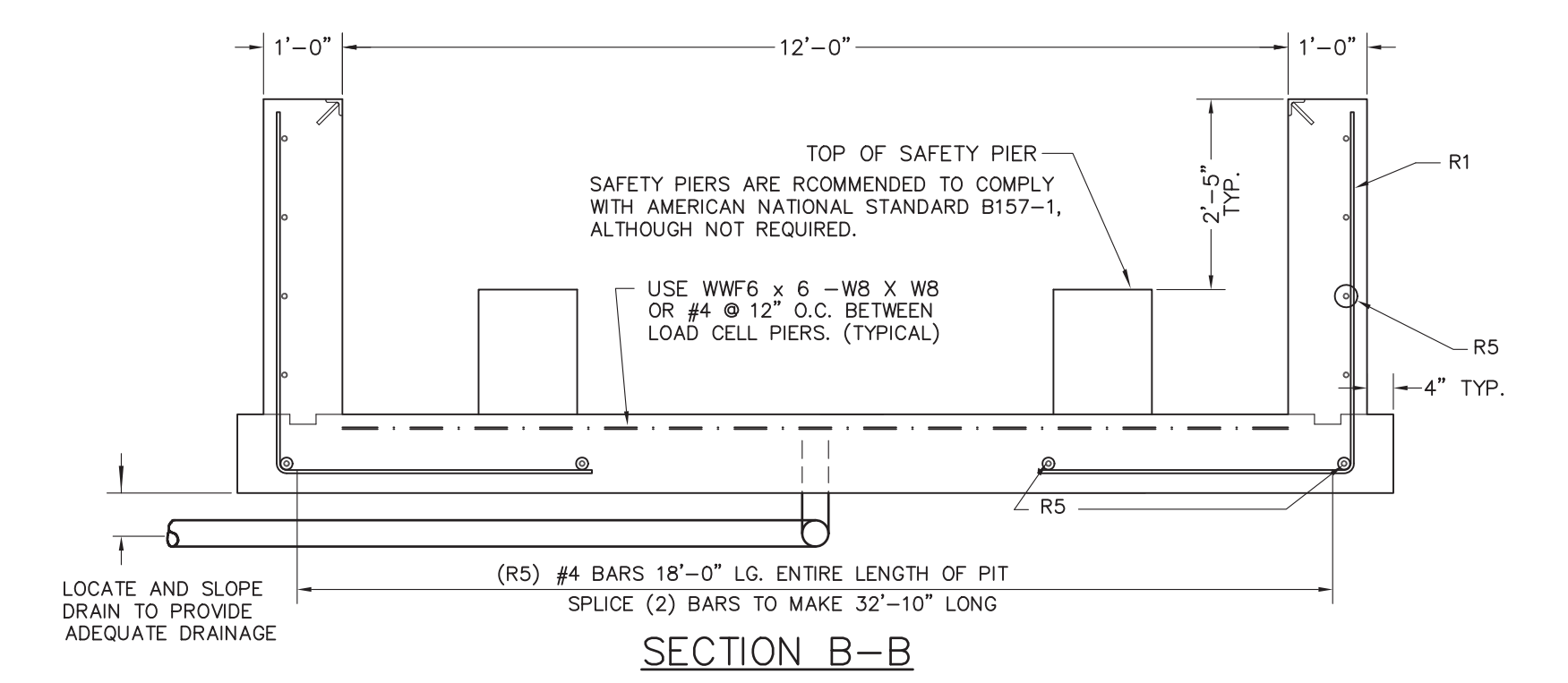
SECTION A-A
TYPICAL (3) PLACES



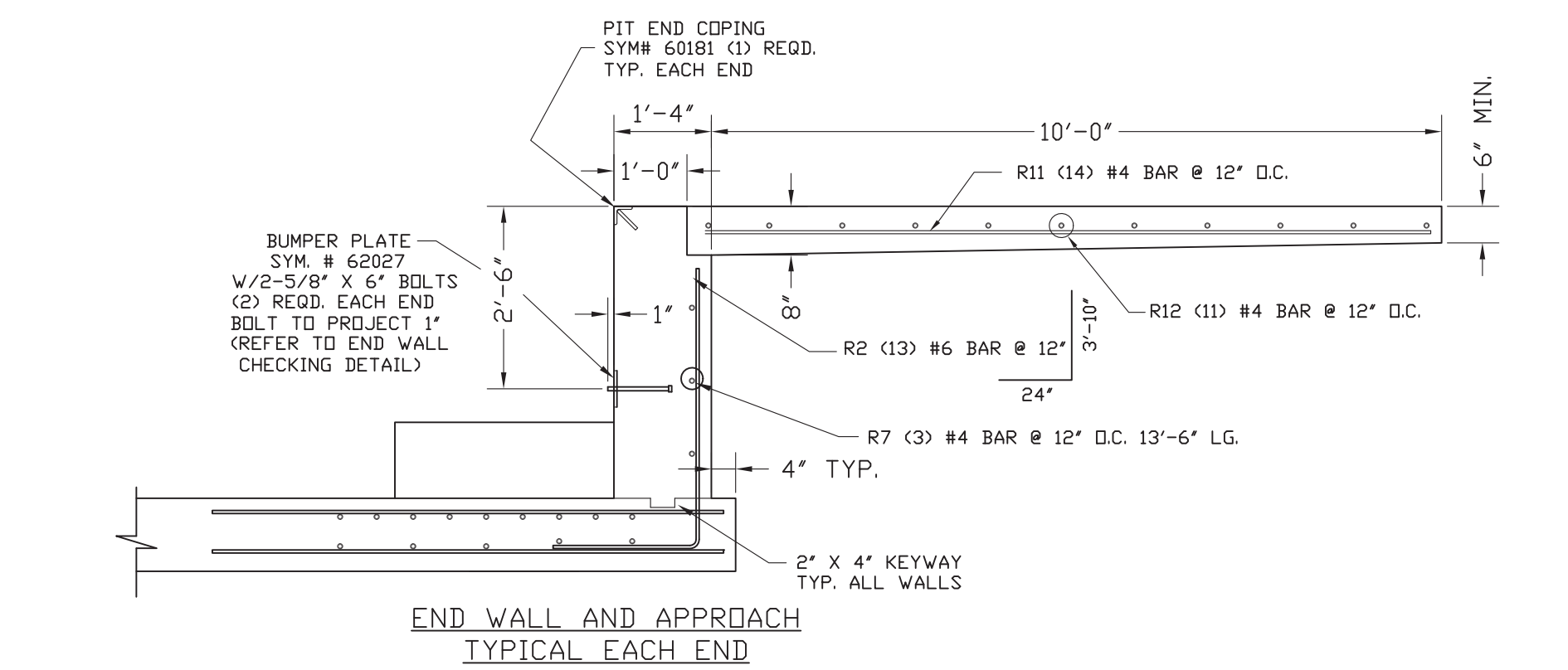
END WALL CHECKING DETAIL

APPROX. CONCRETE REQ'D.	
SLAB/PIERS	20 CU. YDS.
WALLS	14 CU. YDS.
APPROACHES	6 CU. YDS.
TOTAL W/O SAFETY PIERS	40 CU. YDS.
TOTAL W/ SAFETY PIERS	41 CU. YDS.

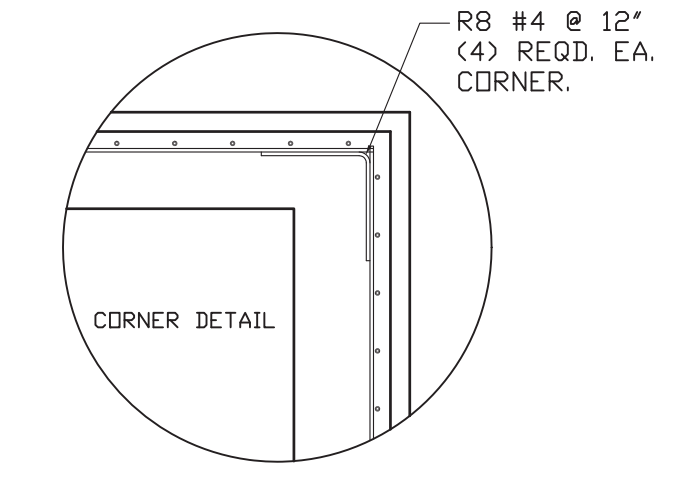
APPROX. EXCAVATION QTY = 120 CU. YDS.
(BASED ON 2'-0" CLEARANCE AROUND SIDE OF PIT)



SECTION B-B



END WALL AND APPROACH
TYPICAL EACH END



CORNER DETAIL

LET BY	DATE	REVISION	FAIRBANKS SCALES	
		MADE FROM D91374-RP4	Meridian, Mississippi	
			30' X 12' REINFORCED PIT	
			3-SECTION FULL ELECTRONIC	
			CAP. 85 TON 70K CLC	
			PLT-2600RC-5E2	
			5/6/04	Material
			N/A	Scale
			1	Sheet
			1	of 1
			REC	drawn by
				4' DEEP PIT
				D91386-RP4