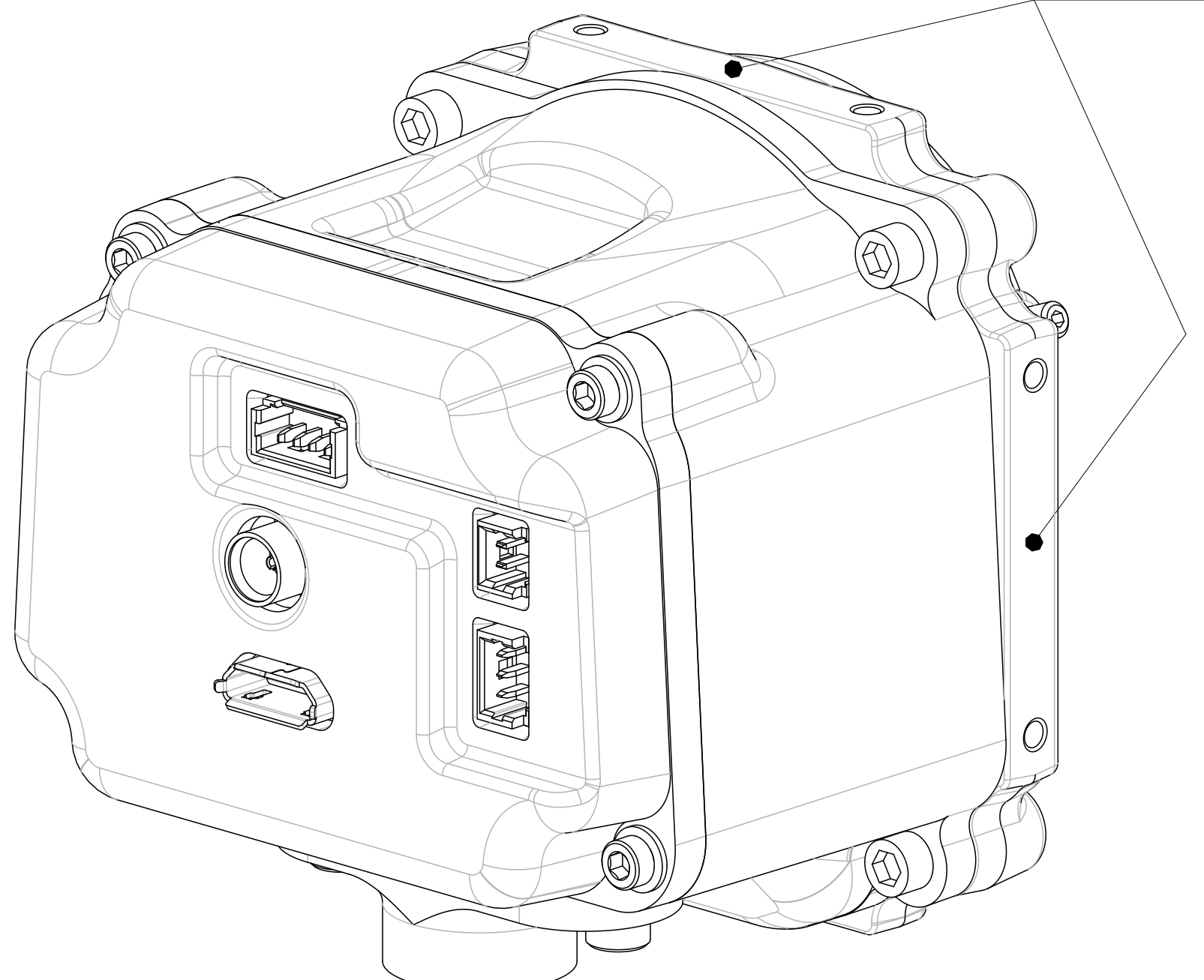
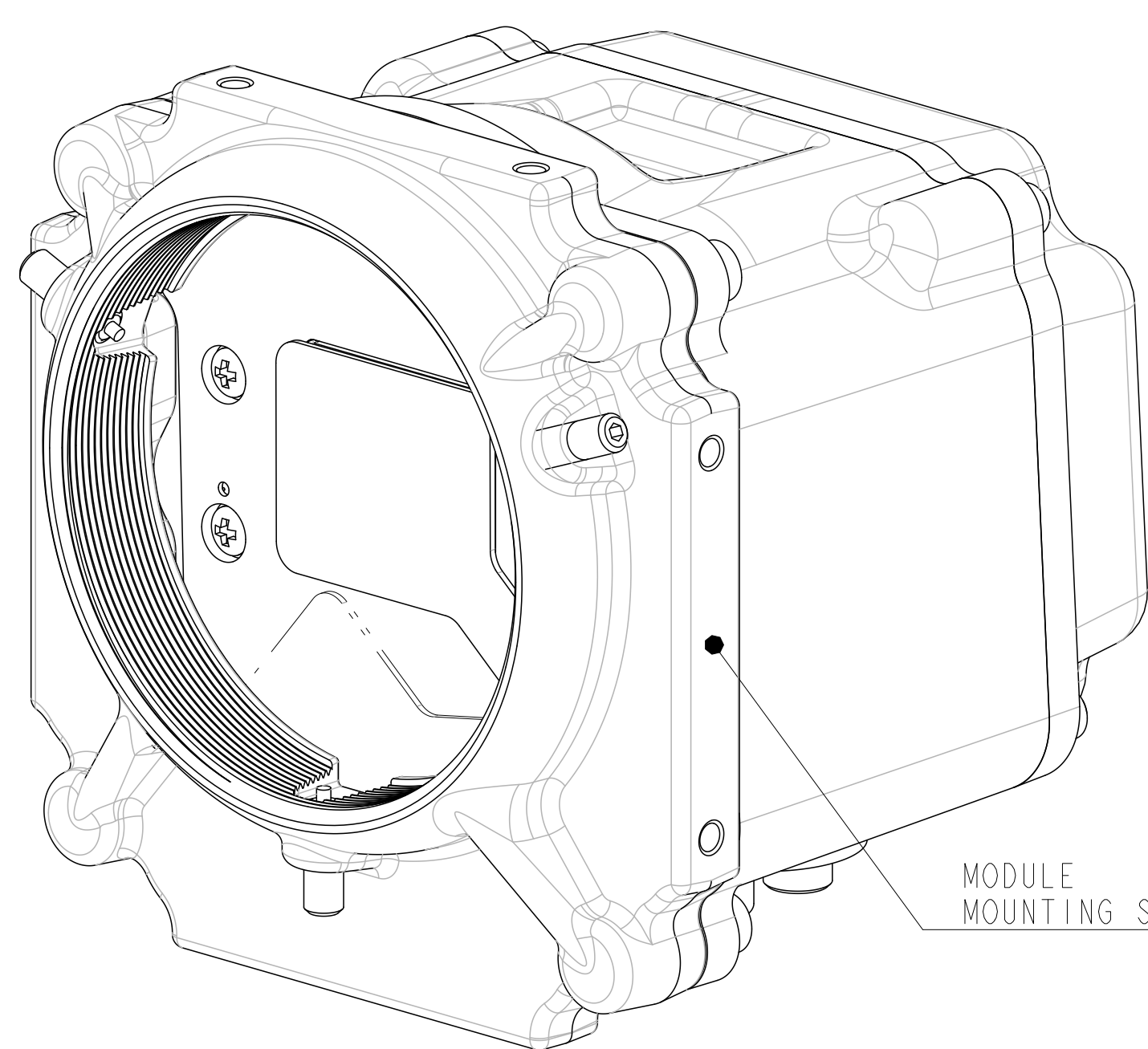


1. DRAWING CONFORMS TO ASME Y14.100.
2. THIS DOCUMENT DEPICTS THE INTERFACES FOR THE TWV640 12uM MICROIR PRODUCTS.
3. THIS DRAWING IS NOT TO BE USED FOR FABRICATION OR INSPECTION. DIMENSIONS SHOWN ARE FOR REFERENCE ONLY.
4. DATUM PLANES -E- AND -F- ARE DEFINED AS THE PERPENDICULAR PLANES WHICH ARE THE CENTERLINES OF THE ACTIVE PIXEL AREA, AS DEFINED BY THE ROIC FIDUCIAL MARKS.
5. PHYSICAL CHARACTERISTICS:

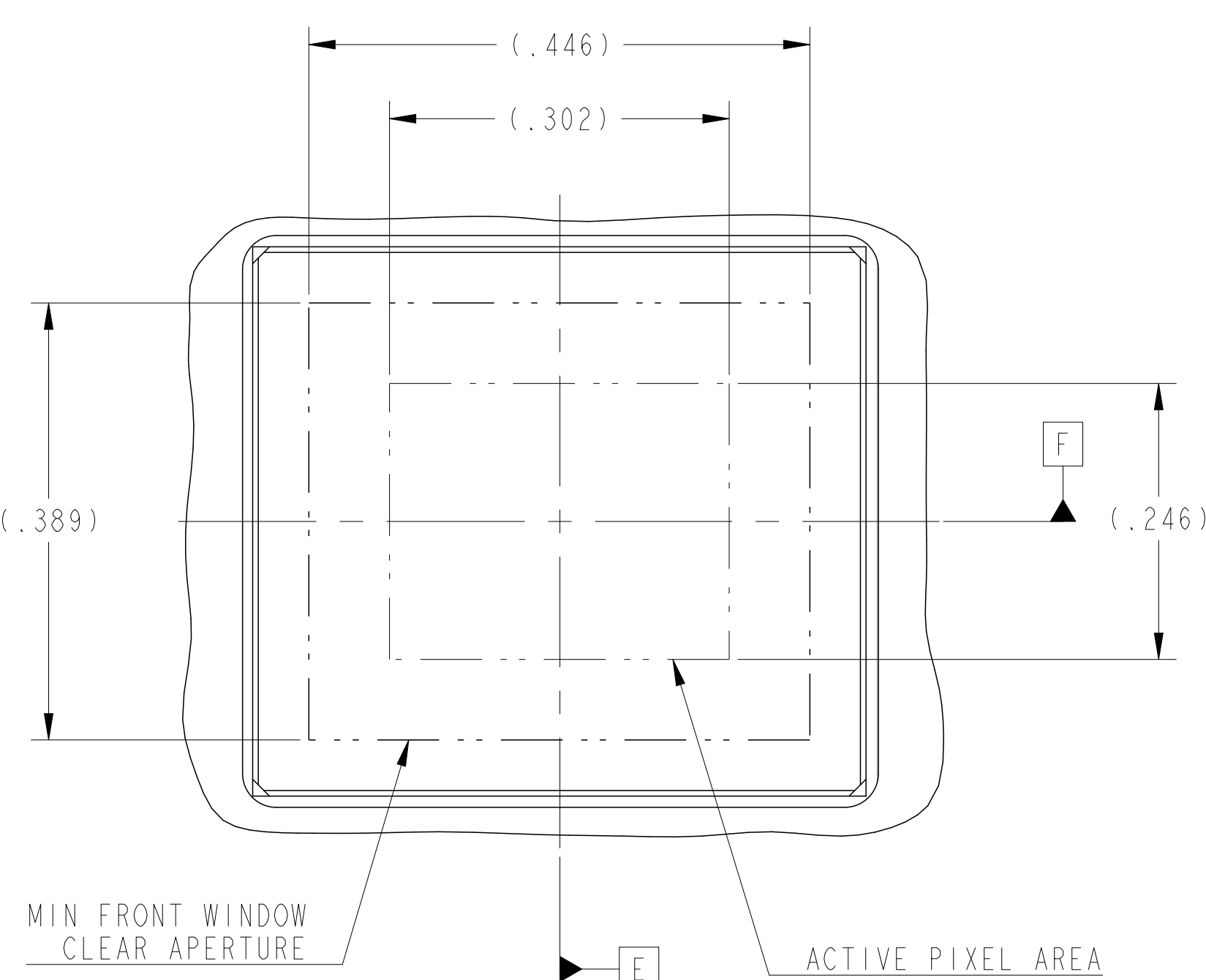
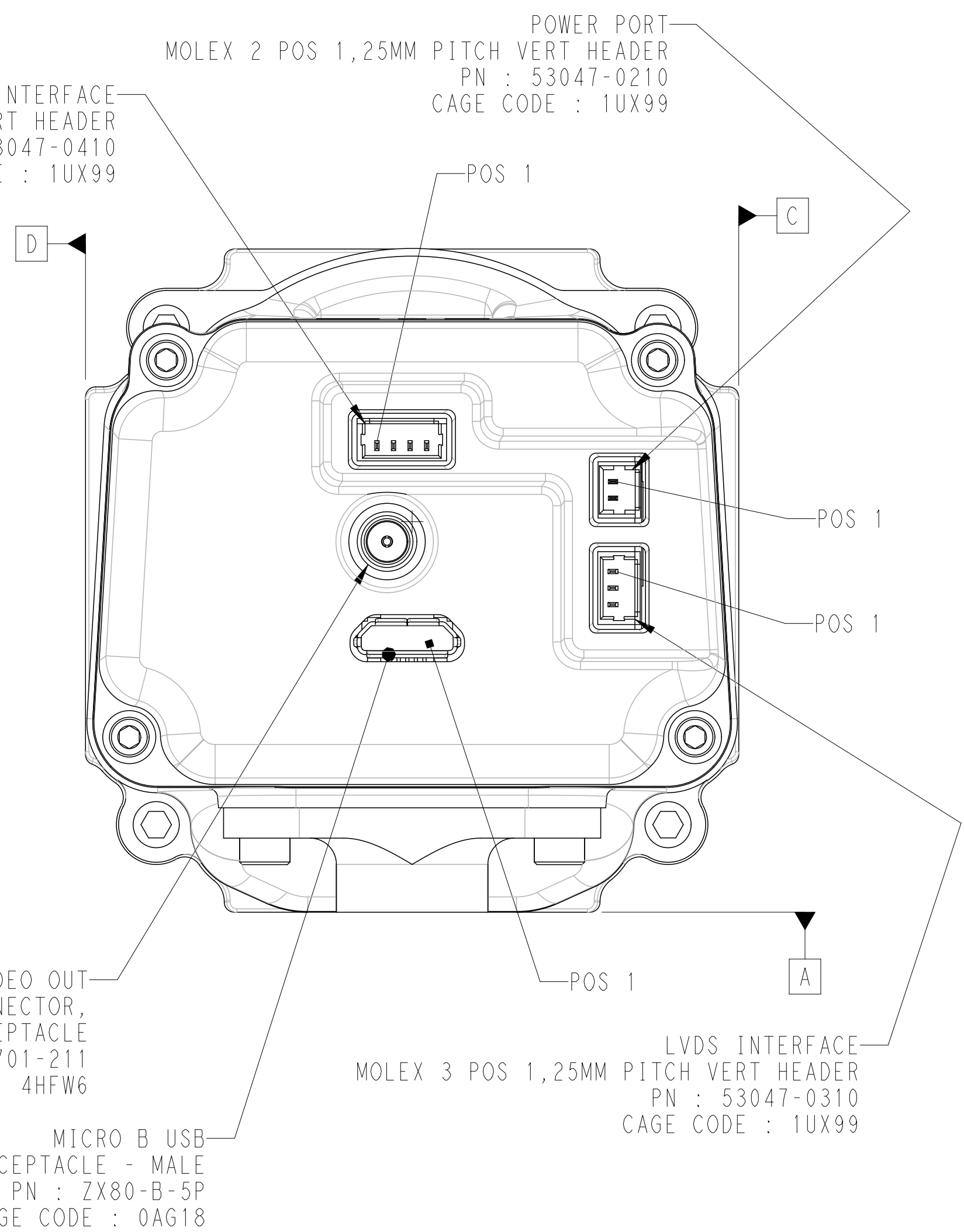
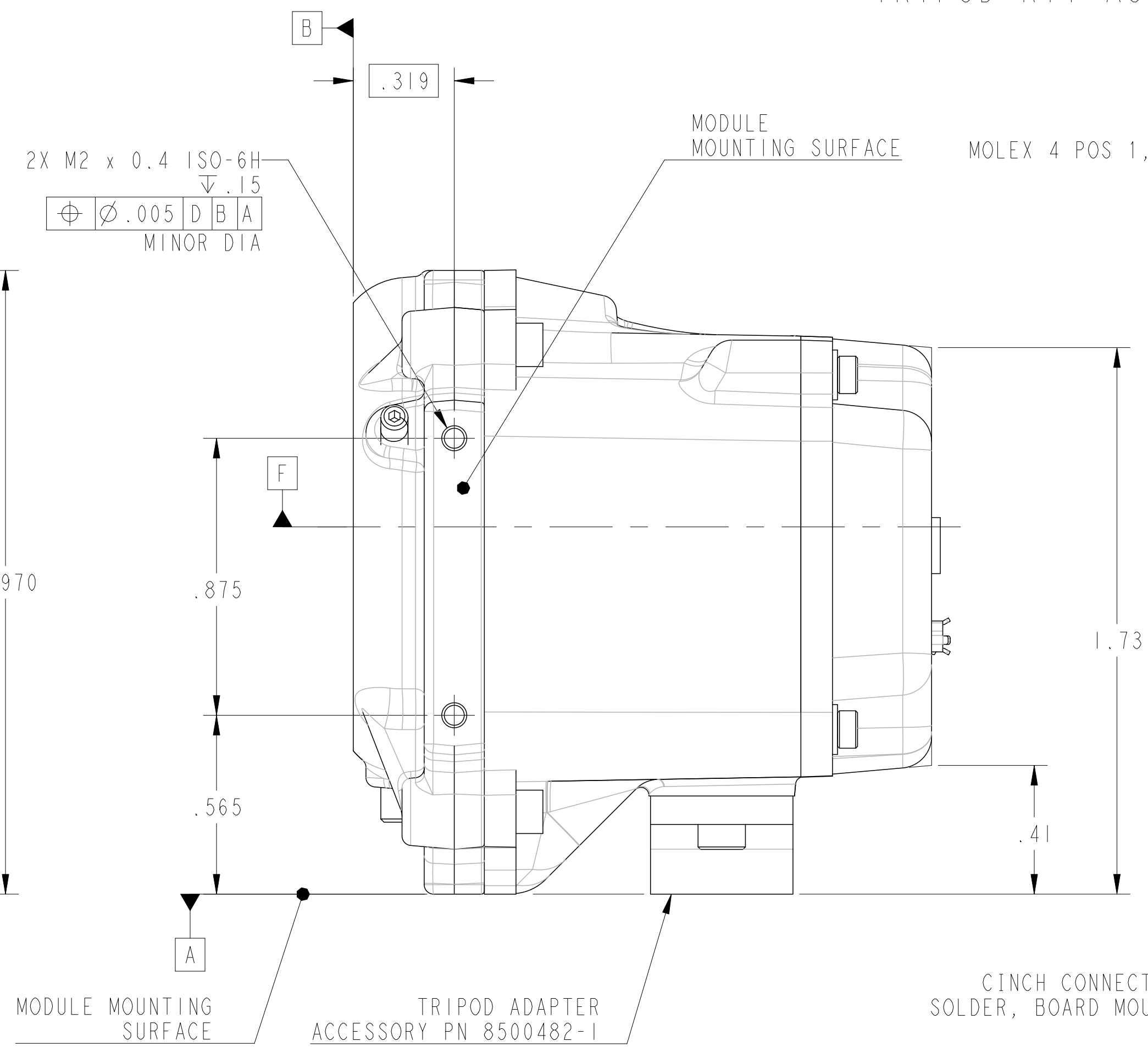
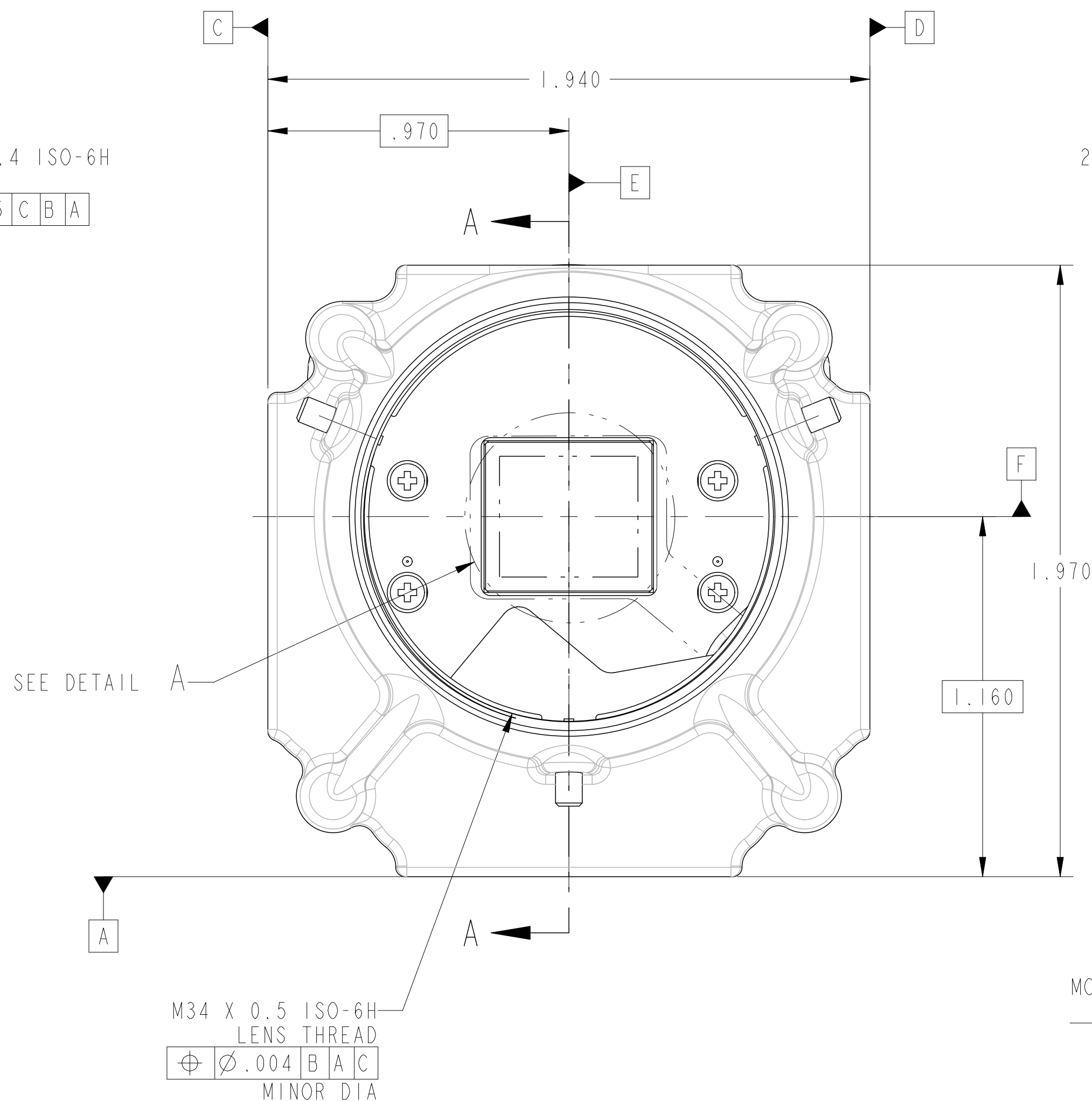
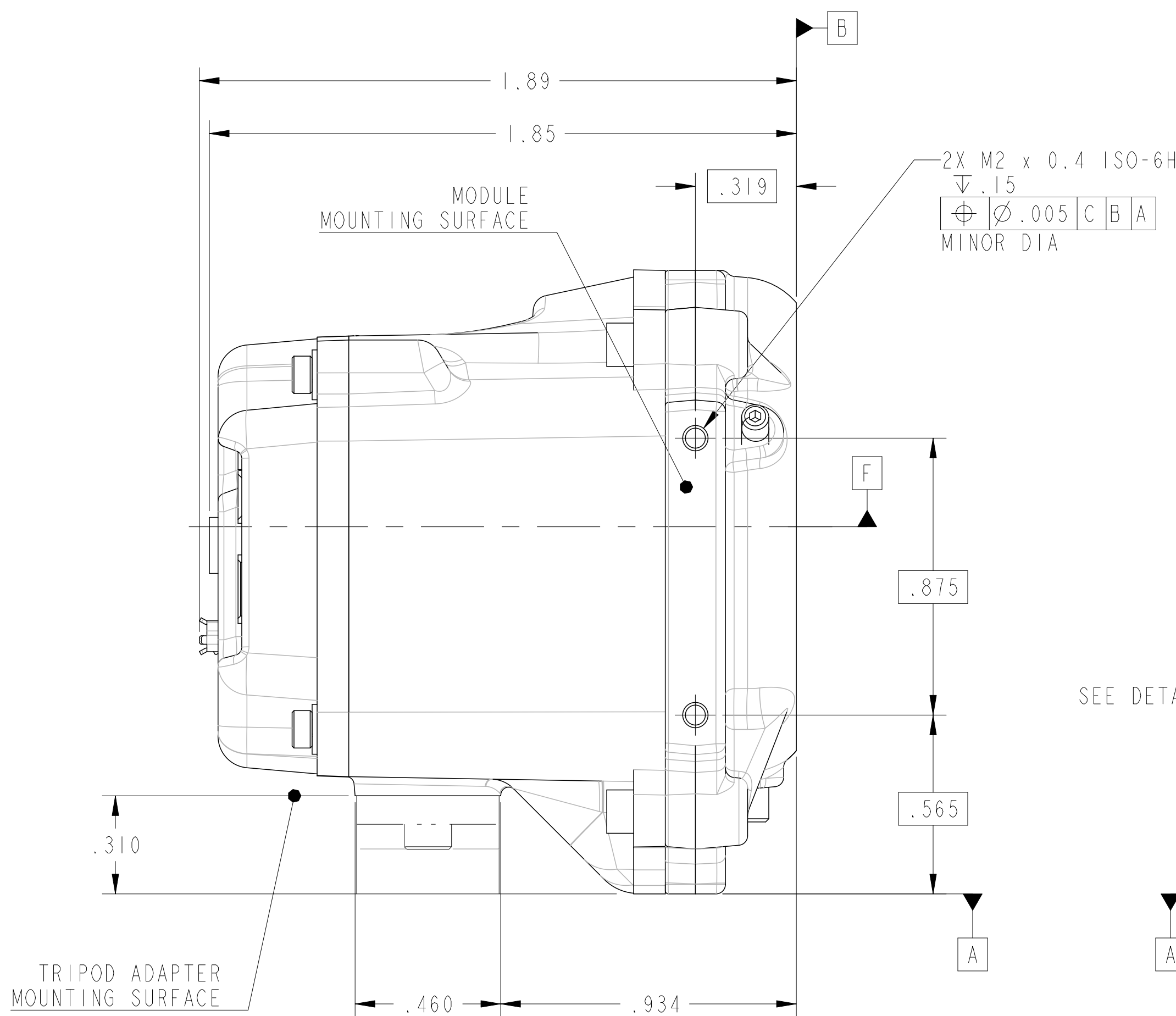
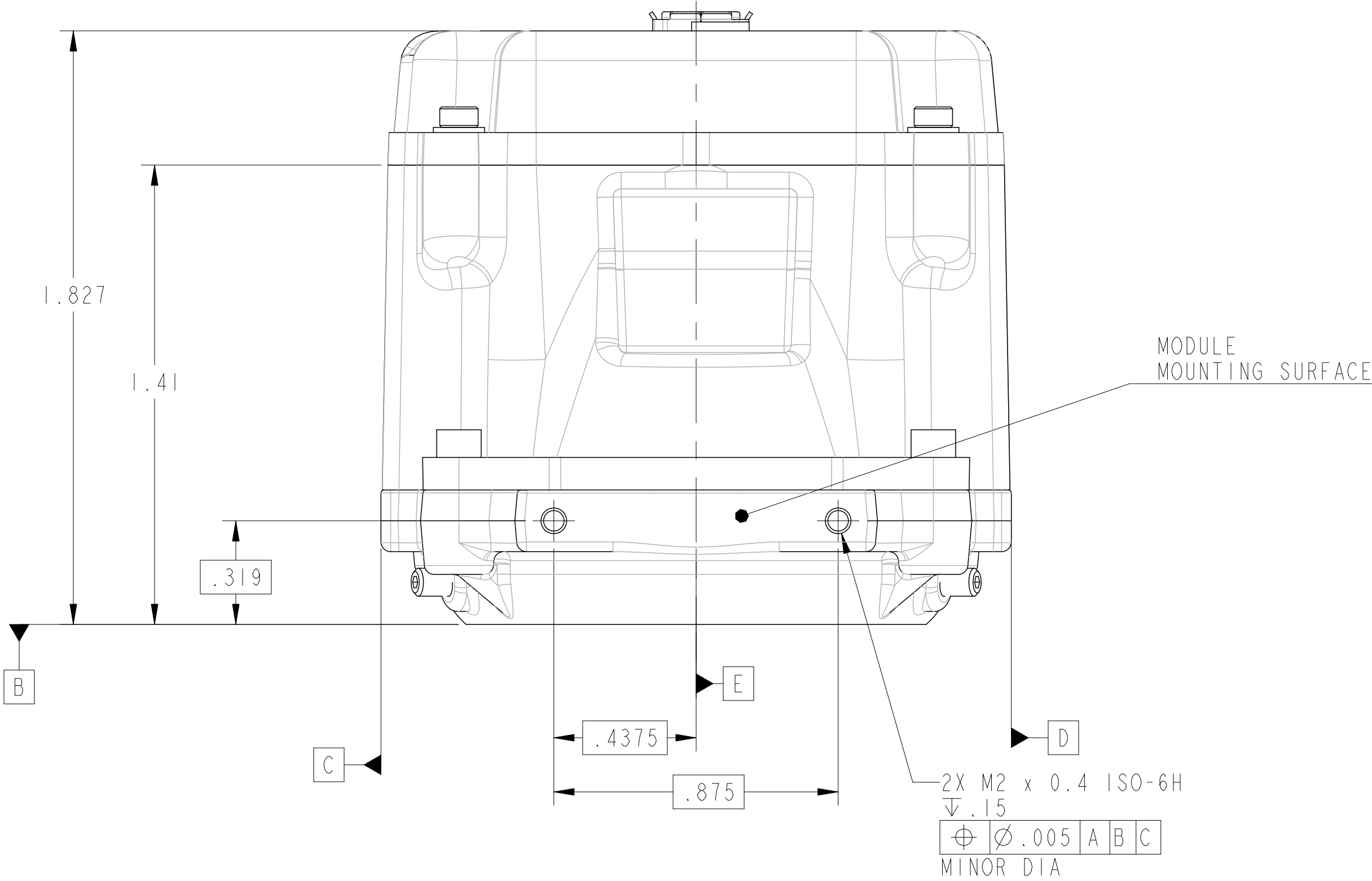
SPATIAL VOLUME = 7.07 in3

MASS (EST) = 125g

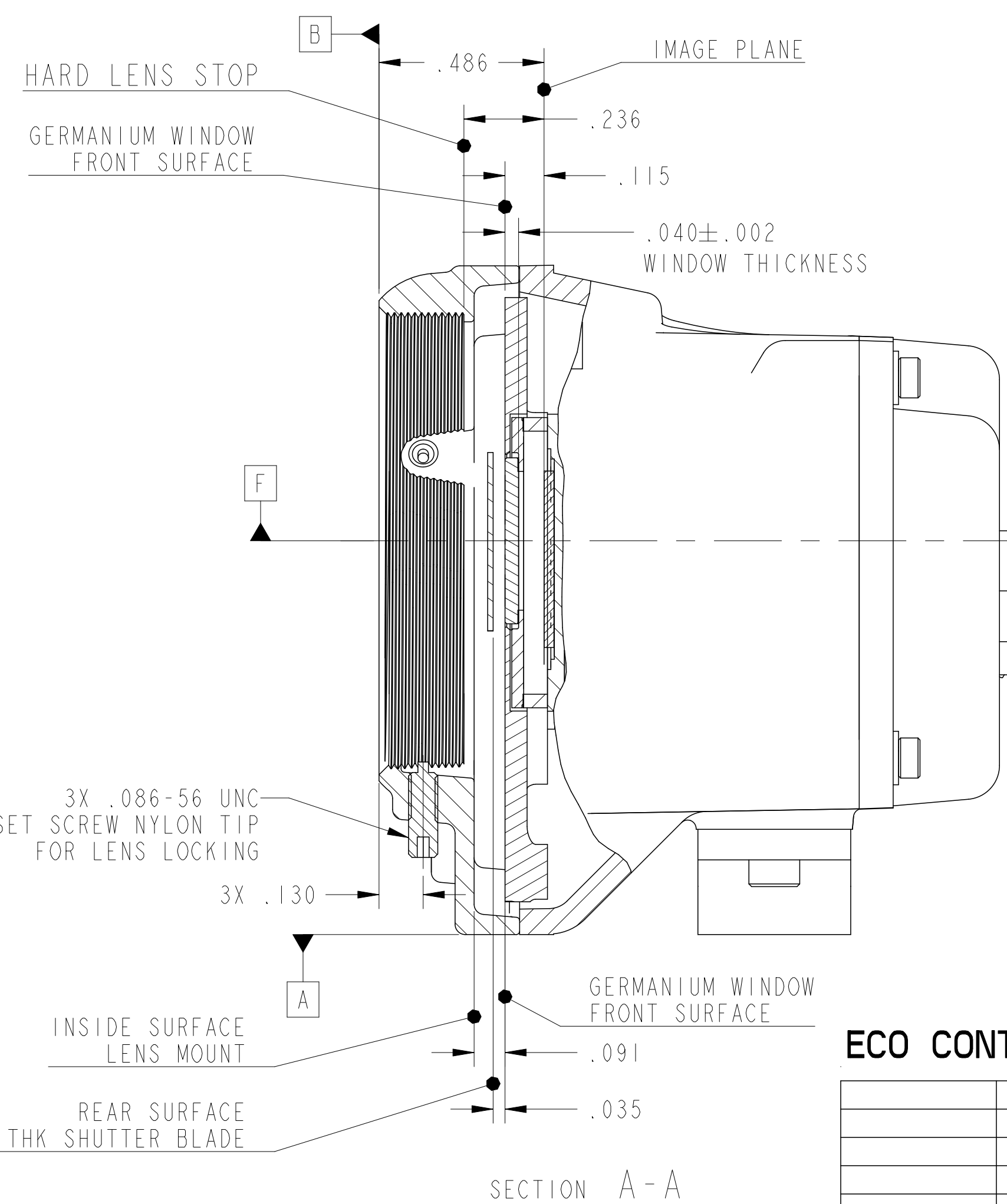
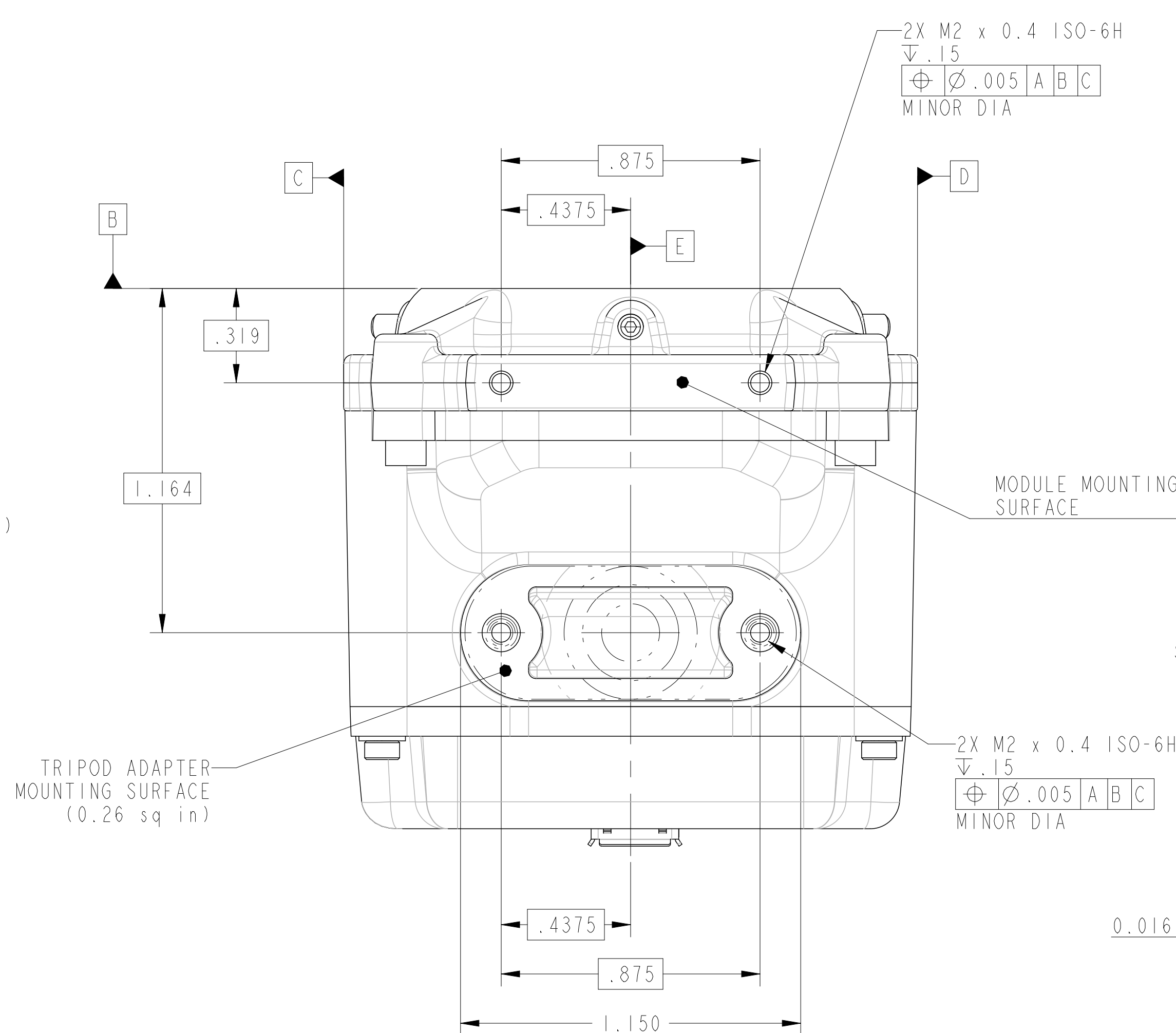
MODULE
MOUNTING
SURFACE



MICROIR CAMERA MODULE (SHORT BWD) SHOWN WITH
 - TCP (THERMALLY CONDUCTIVE PLASTIC) HOUSING COMPONENTS
 - NO LENS; SEE BAE ENGINEERING FOR LIST OF COMPATIBLE LENSES
 - EVALUATION I/O PBA
 - TRIPOD KIT ACCESSORY SHOWN



ACTIVE AREA
DETAIL A
SCALE 8/1



CAMERA CONFIGURATION TABLE		
8507468	SHT 1	SHORT BWD LENS VERSION WITH TCP (THERMALLY CONDUCTIVE PLASTIC) HOUSING (FOR BWD 5.5mm TO 7.5mm)
8507468	SHT 2	LONG BWD LENS VERSION WITH TCP HOUSING (FOR BWD 6.0mm TO 10.6mm)
8507468	SHT 3	BOTH SHORT & LONG BWD SIMPLE LENS VERSIONS WITH TCP HOUSING

DISTRIBUTION A - PUBLIC RELEASE UNLIMITED

THIS DOCUMENT DESCRIBES COMMODITIES, TECHNOLOGY OR SOFTWARE
WHOSE EXPORT FROM THE UNITED STATES MUST BE IN ACCORDANCE
WITH EXPORT ADMINISTRATION REGULATIONS (EAR). DIVERSION
CONTRARY TO U.S. LAW IS PROHIBITED.

DISCLAIMER AND COPYRIGHT

THIS DOCUMENT GIVES ONLY A GENERAL DESCRIPTION OF THE PRODUCT(S)
AND SERVICE(S) AND, EXCEPT WHERE EXPRESSLY PROVIDED OTHERWISE,
SHALL NOT FORM ANY PART OF ANY CONTRACT.
FROM TIME TO TIME, CHANGES MAY BE MADE IN THE PRODUCTS OR THE
CONDITIONS OF SUPPLY.

BAE SYSTEMS IS A REGISTERED TRADEMARK OF BAE Systems plc.
2016 BAE SYSTEMS, ALL RIGHTS RESERVED

ALL SHEETS SAME REVISION

BAE SYSTEMS
INFORMATION AND ELECTRONICS
SYSTEMS INTEGRATION, INC.

CAMERA MODUL, 12UM COMMERCIAL

SIZE	CAGE CODE	DWG NO
E	81395	8507468

SCALE: 3/1 PROINTRALINK: - 4 SHEET 1 OF 1

850/468	DATE
WARE ANCE ON	DATE
DUCT(S) WISE,	DATE

	<i>A</i>
--	----------

CREO(PAR



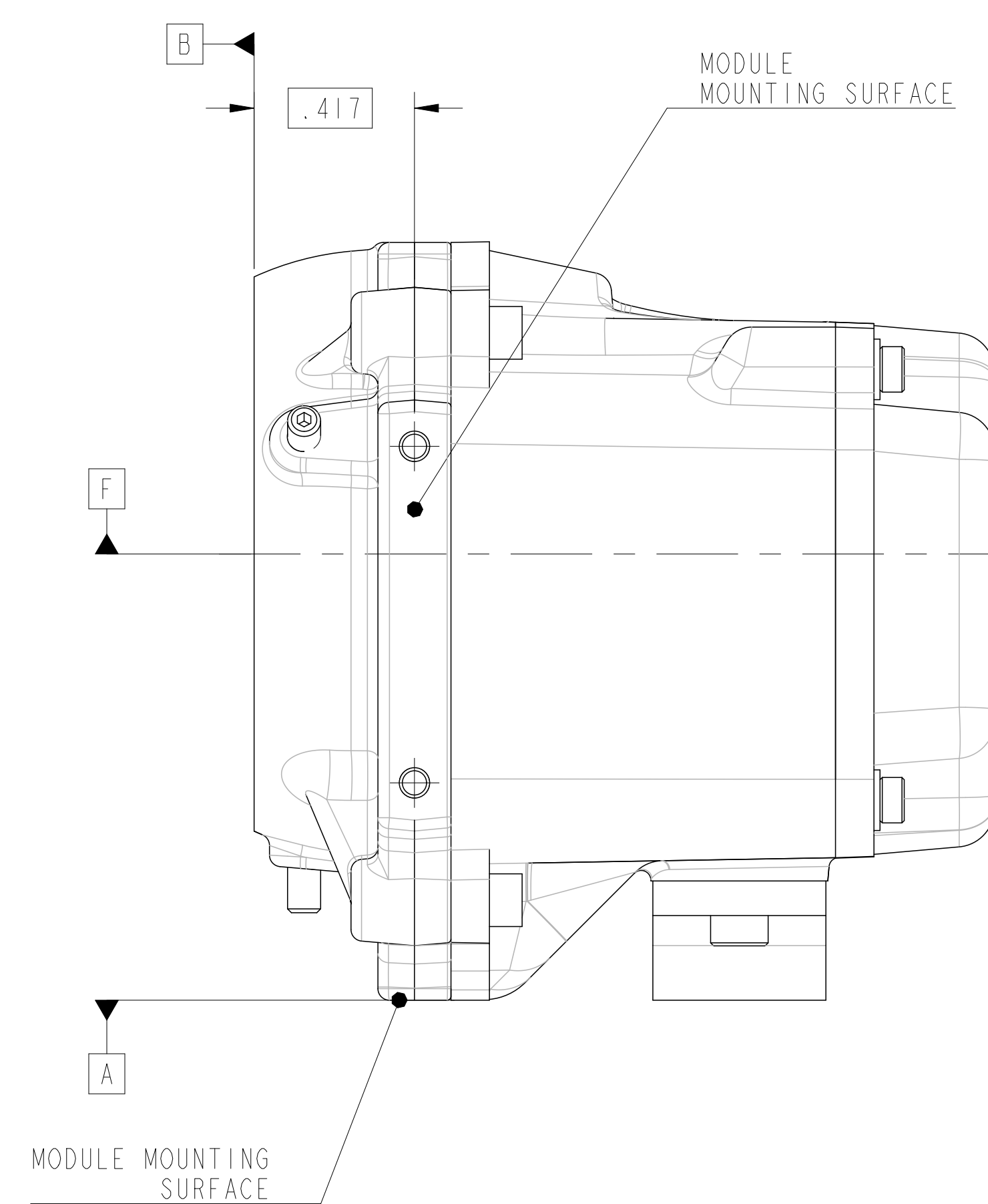
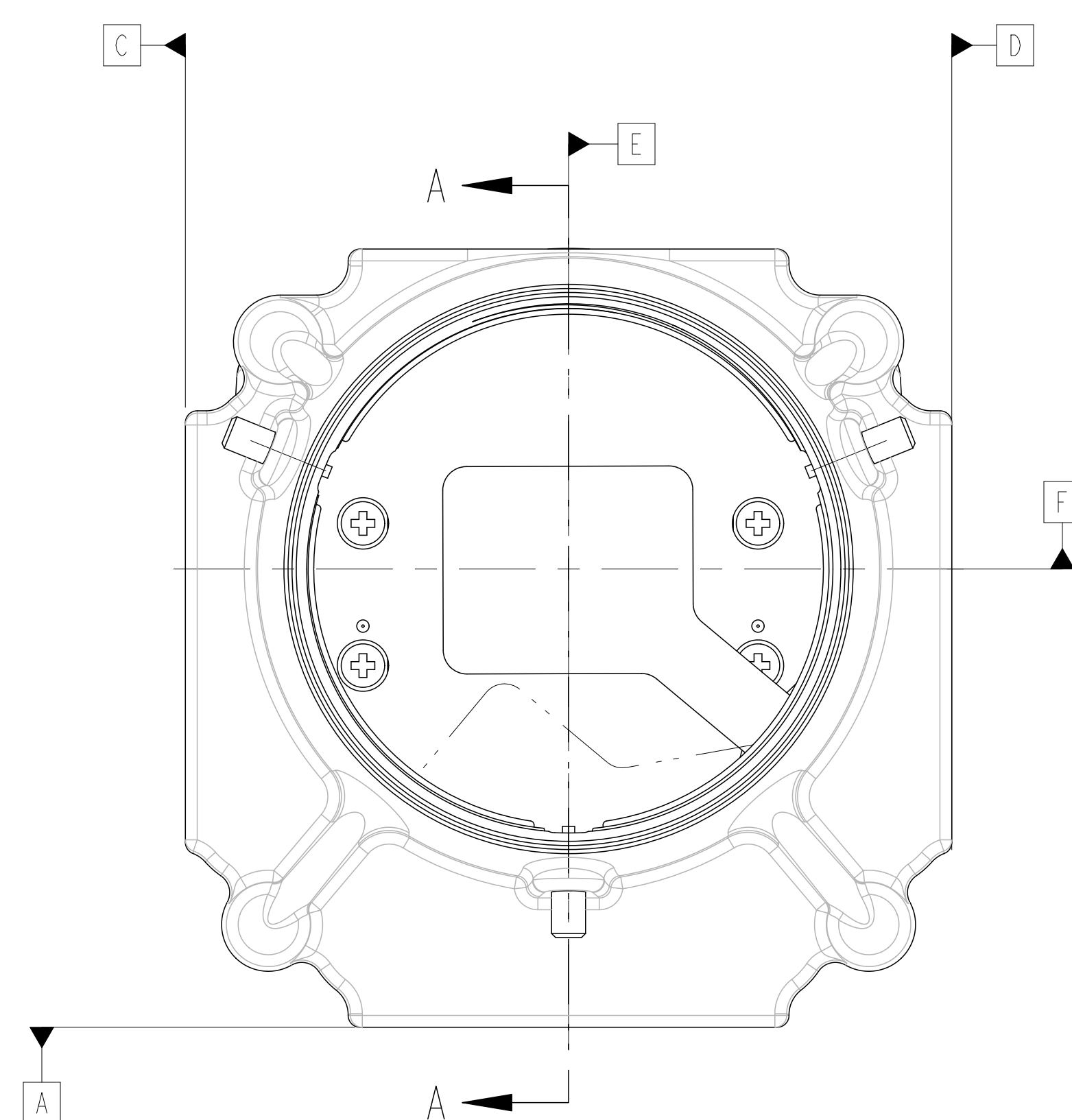
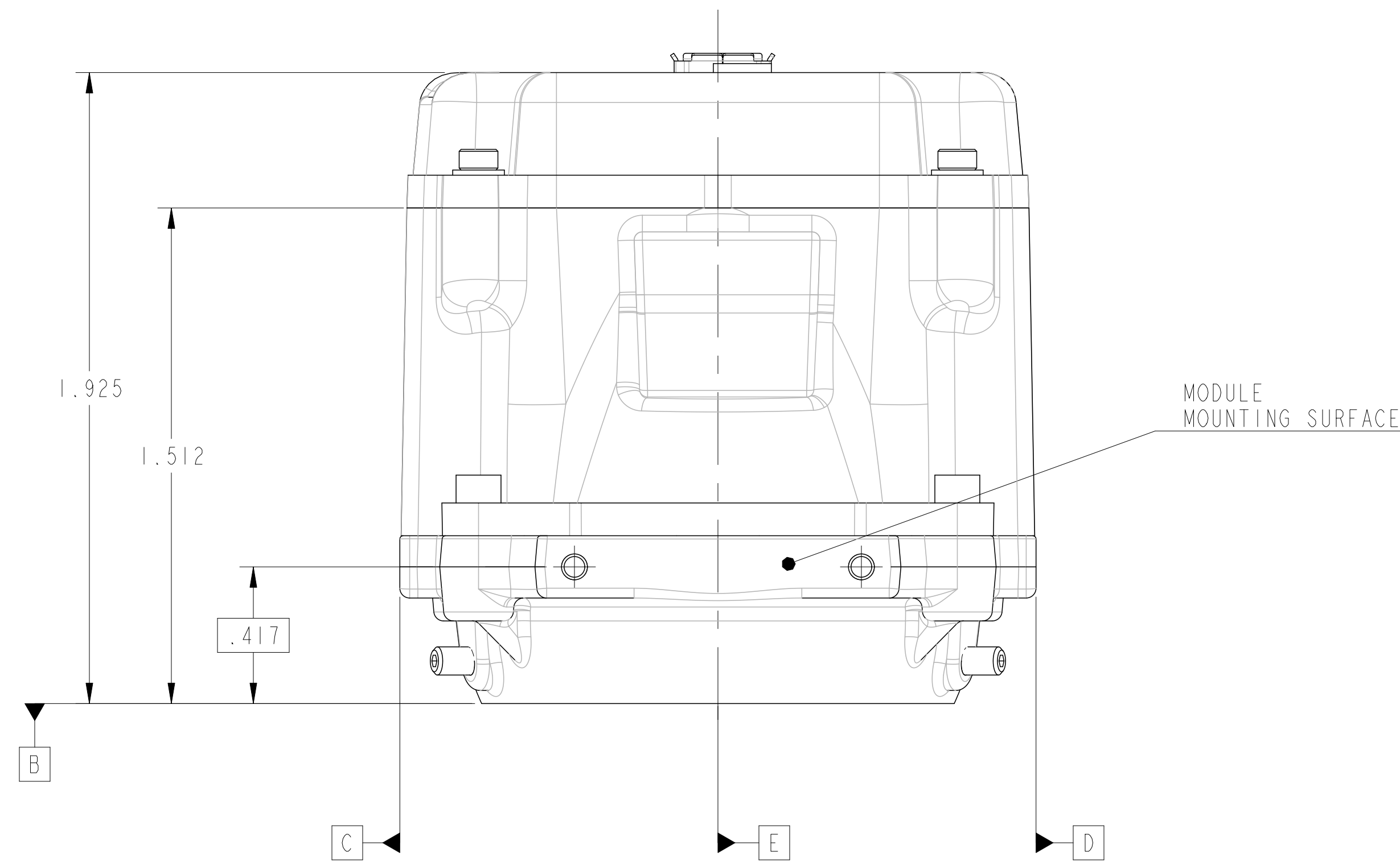
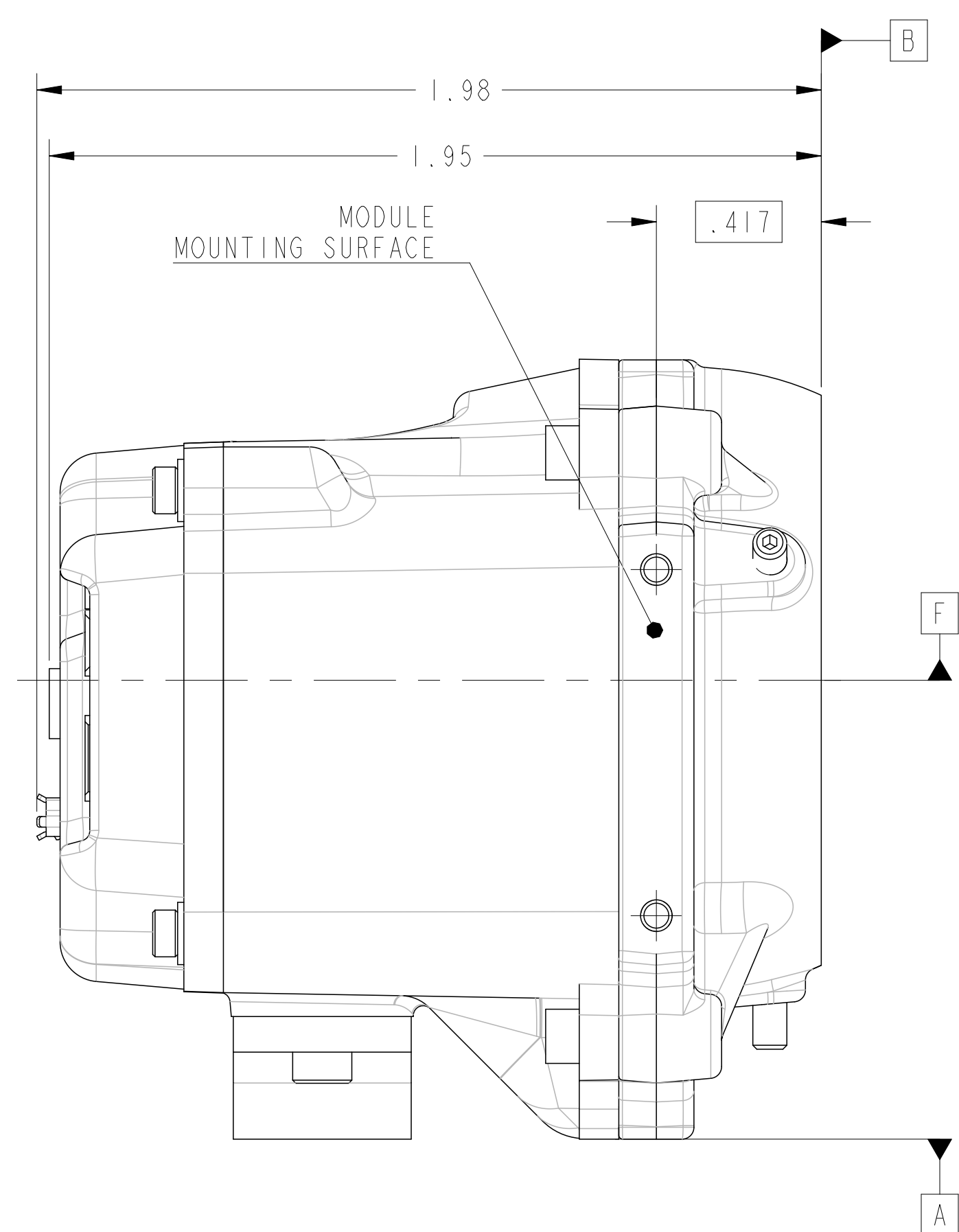
CAUTION

SENSITIVE ELECTRONIC DEVICES

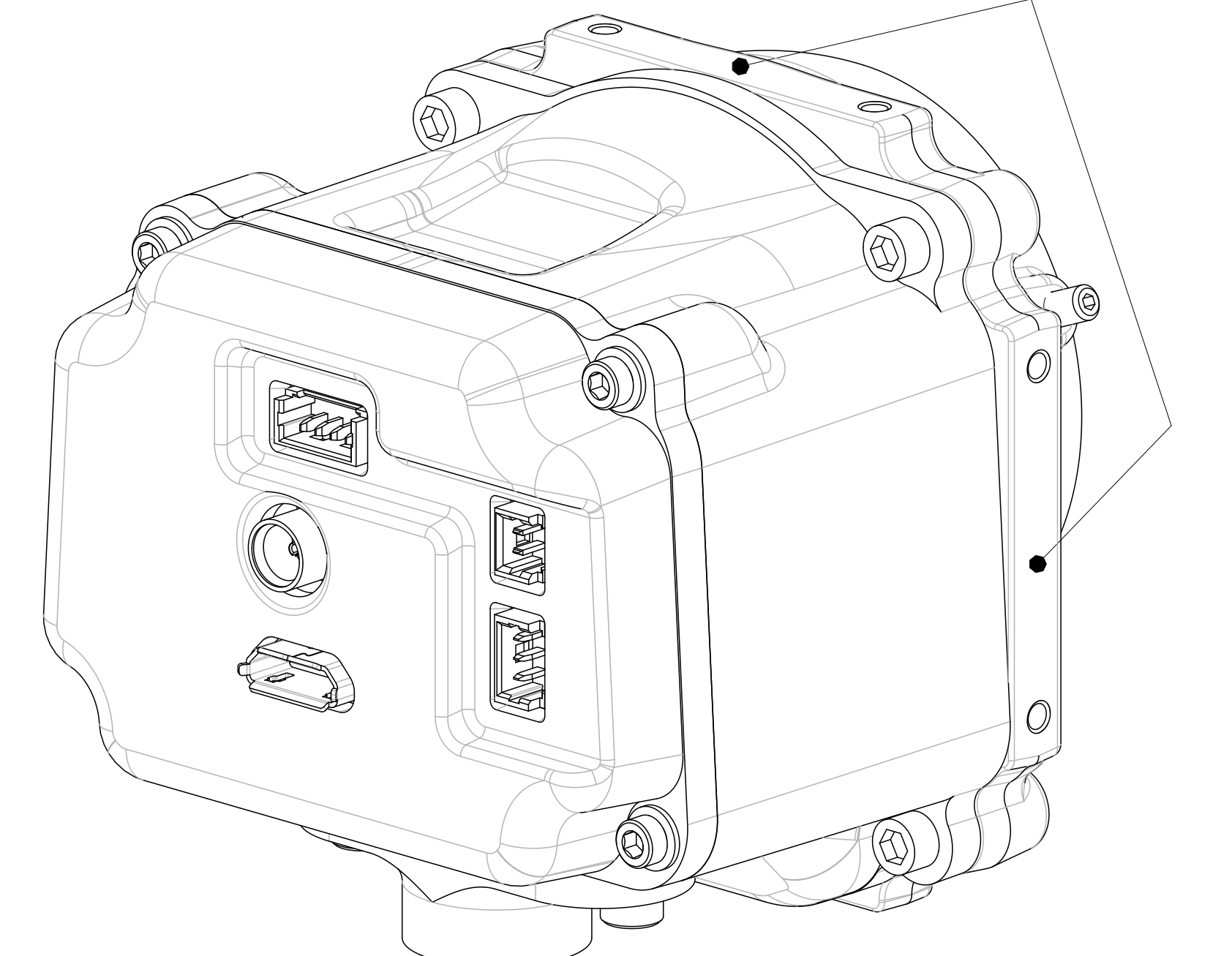
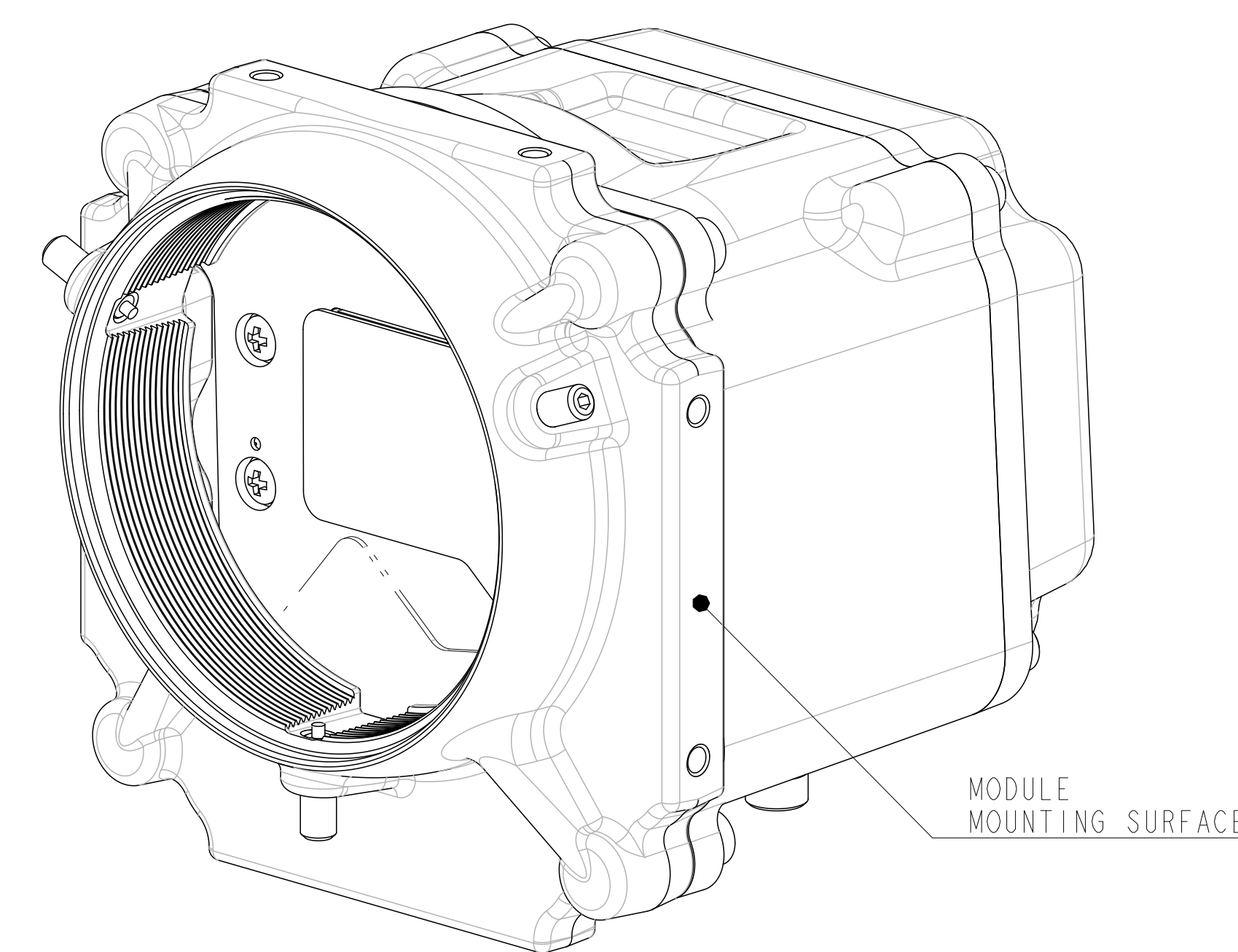
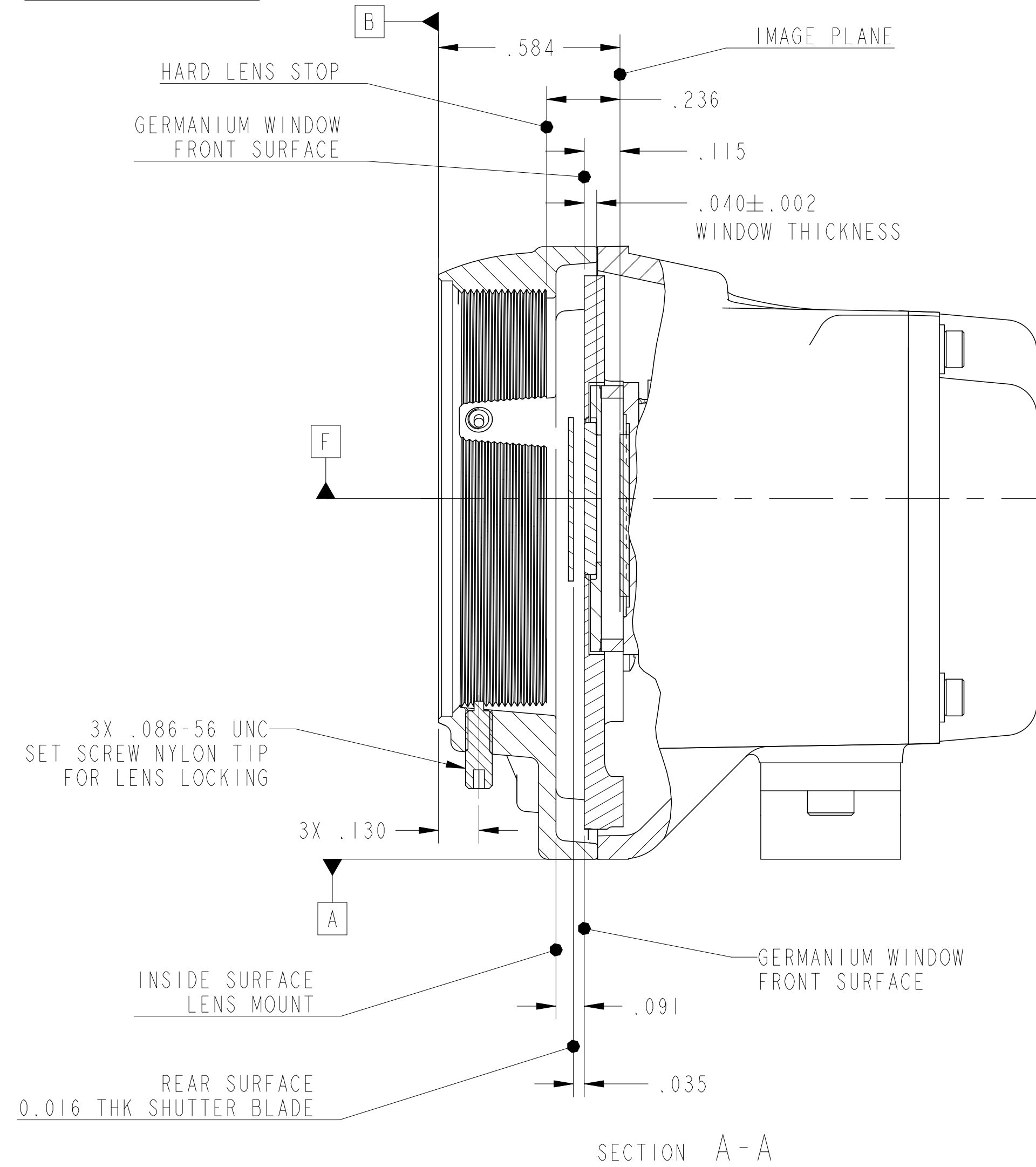
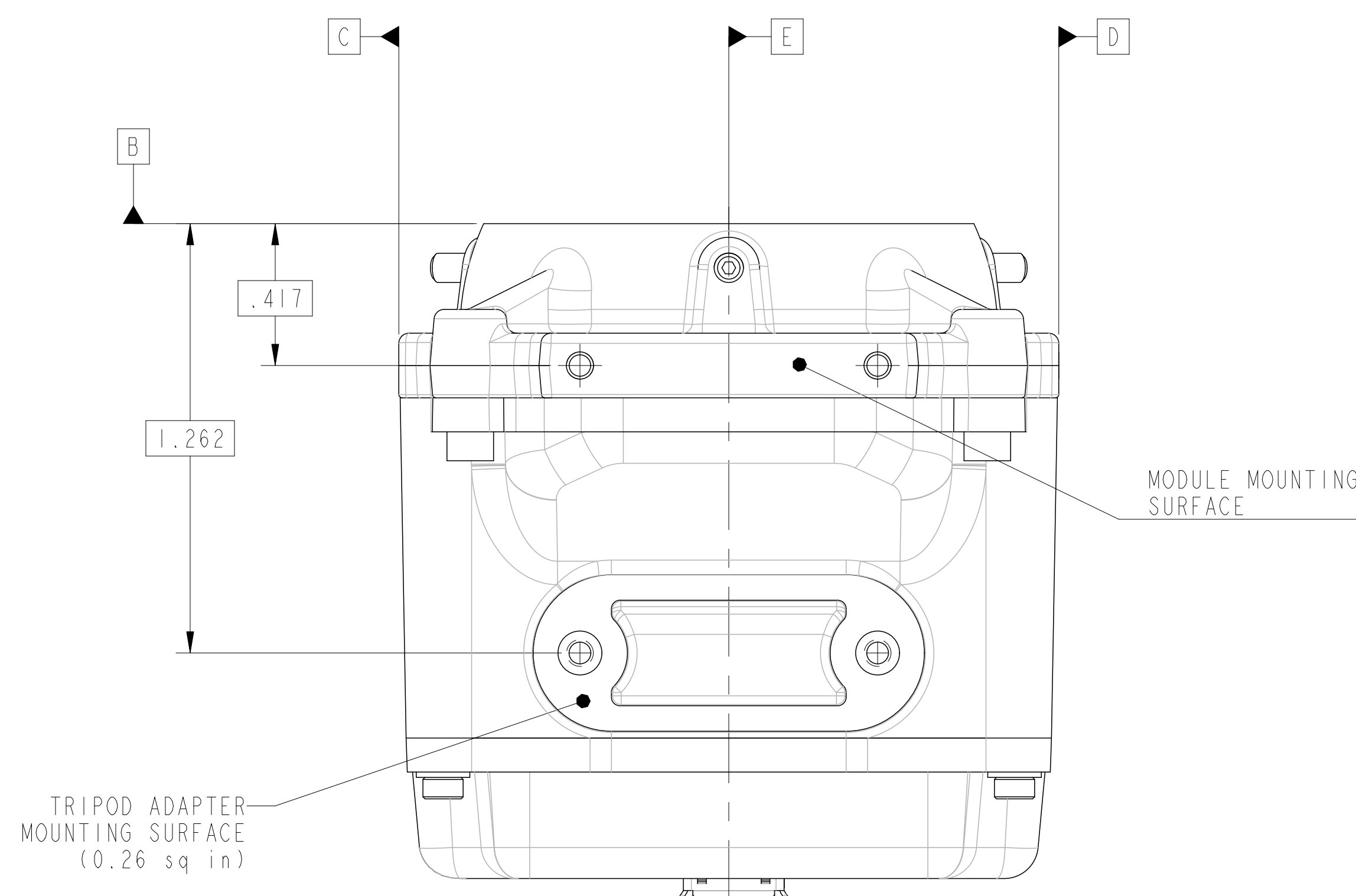
ECO CONTROL

INTERFACE DRAWING

		UNLESS OTHERWISE SPECIFIED DIMENSIONS ARE IN INCHES. DIMENSIONS APPLY AFTER FINISH		CONTRACT NO. NA		BAE SYSTEMS	
				BY OR APPROVED		INFORMATION AND ELECTRONIC SYSTEMS INTEGRATION, INC.	
				DRAWN J. SHOWN		TITLE	
				CHECKED -		CAMERA MODULE, 12UM COMMERCIAL	
		TOLERANCES ON DIMENSIONS ASME Y14.5M-1994 APPLIES		ENG R. SKILLINGS			
2 PLACE		3 PLACE	ANGLES	APVD J. HENEBURY			
NA		NA	NA	APVD M. LLOYD			
		THIRD ANGLE PROJECTION		APVD		SIZE	
GEN				APVD		CAGE CODE	
NEXT ASSY		USED ON				DWG NO	
APPLICATION						E 81395	
						SCALE: 3/16" = 1"	
						PRINTING LINK - 4	
						SHEET 1 OF 3	



ACTIVE AREA
SEE SHEET 1



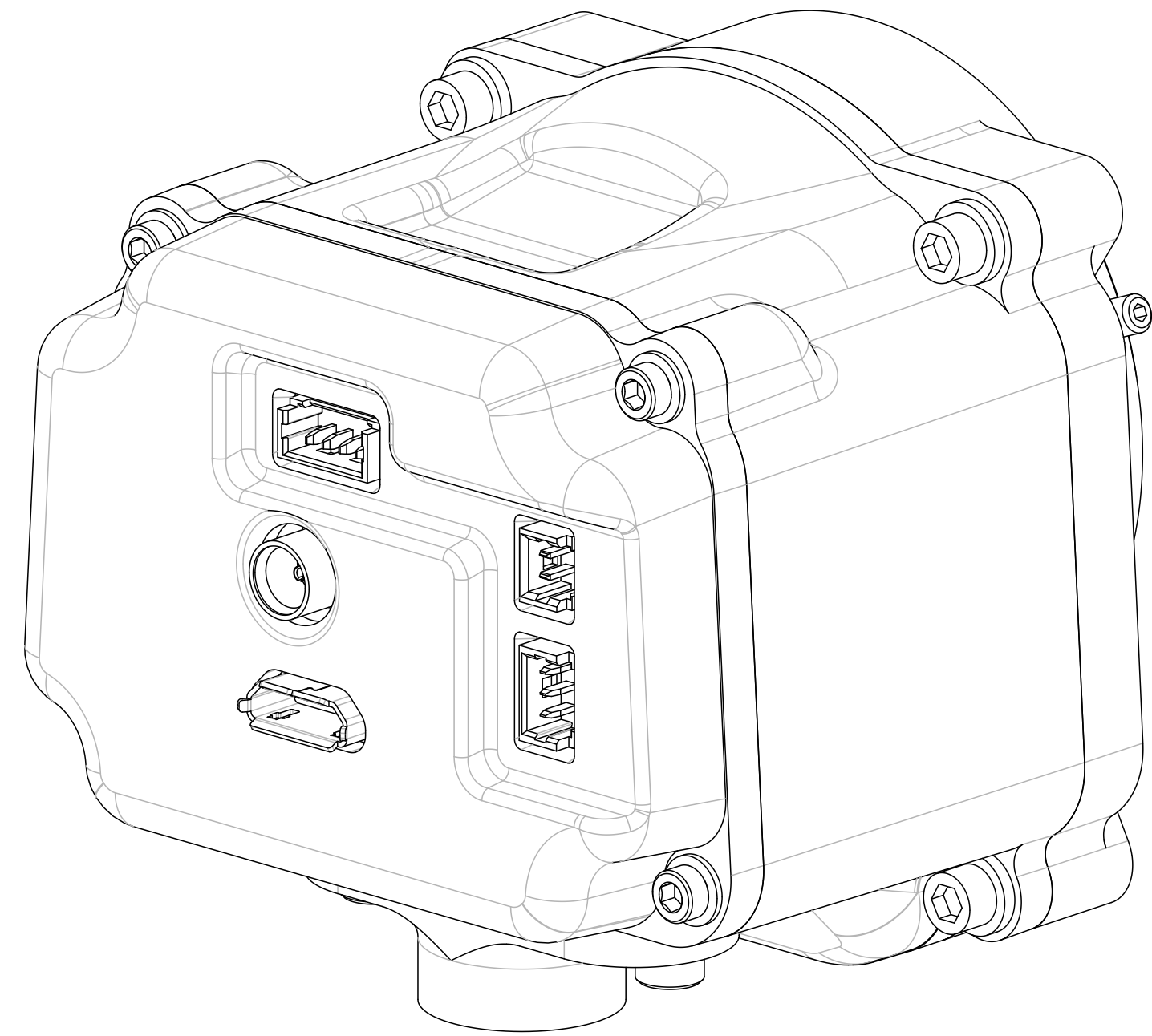
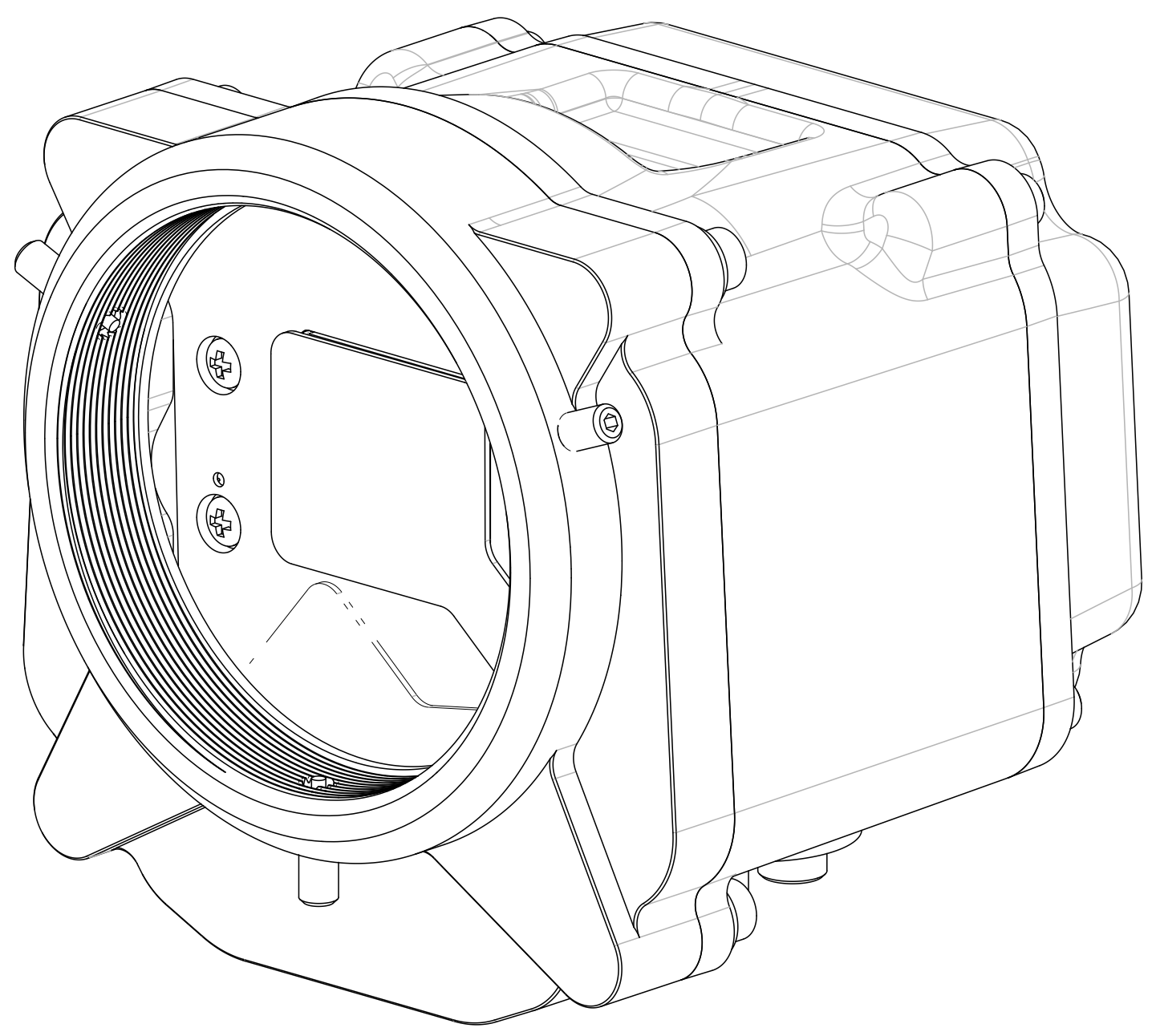
MICROIR CAMERA MODULE (LONG BWD) SHOWN WITH
- TCP (THERMALLY CONDUCTIVE PLASTIC) HOUSING COMPONENTS
- NO LENS; SEE BAE ENGINEERING FOR LIST OF COMPATIBLE LENSES
- EVALUATION I/O PBA
- TRIPOD KIT ACCESSORY SHOWN

CONNECTOR IDENTIFICATION
SEE SHEET 1

DISTRIBUTION A - PUBLIC RELEASE UNLIMITED
THIS DOCUMENT DESCRIBES COMMODITIES, TECHNOLOGY OR SOFTWARE
WHOSE EXPORT FROM THE UNITED STATES MUST BE IN ACCORDANCE
WITH EXPORT ADMINISTRATION REGULATIONS (EAR). DIVERSION
CONTRARY TO U.S. LAW IS PROHIBITED.
DISCLAIMER AND COPYRIGHT
THIS DOCUMENT GIVES ONLY A GENERAL DESCRIPTION OF THE PRODUCT(S)
AND SERVICE(S) AND, EXCEPT WHERE EXPRESSLY PROVIDED OTHERWISE,
SHALL NOT FORM ANY PART OF ANY CONTRACT.
FROM TIME TO TIME, CHANGES MAY BE MADE IN THE PRODUCTS OR THE
CONDITIONS OF SUPPLY.
BAE SYSTEMS IS A REGISTERED TRADEMARK OF BAE Systems plc.
2016 BAE SYSTEMS. ALL RIGHTS RESERVED

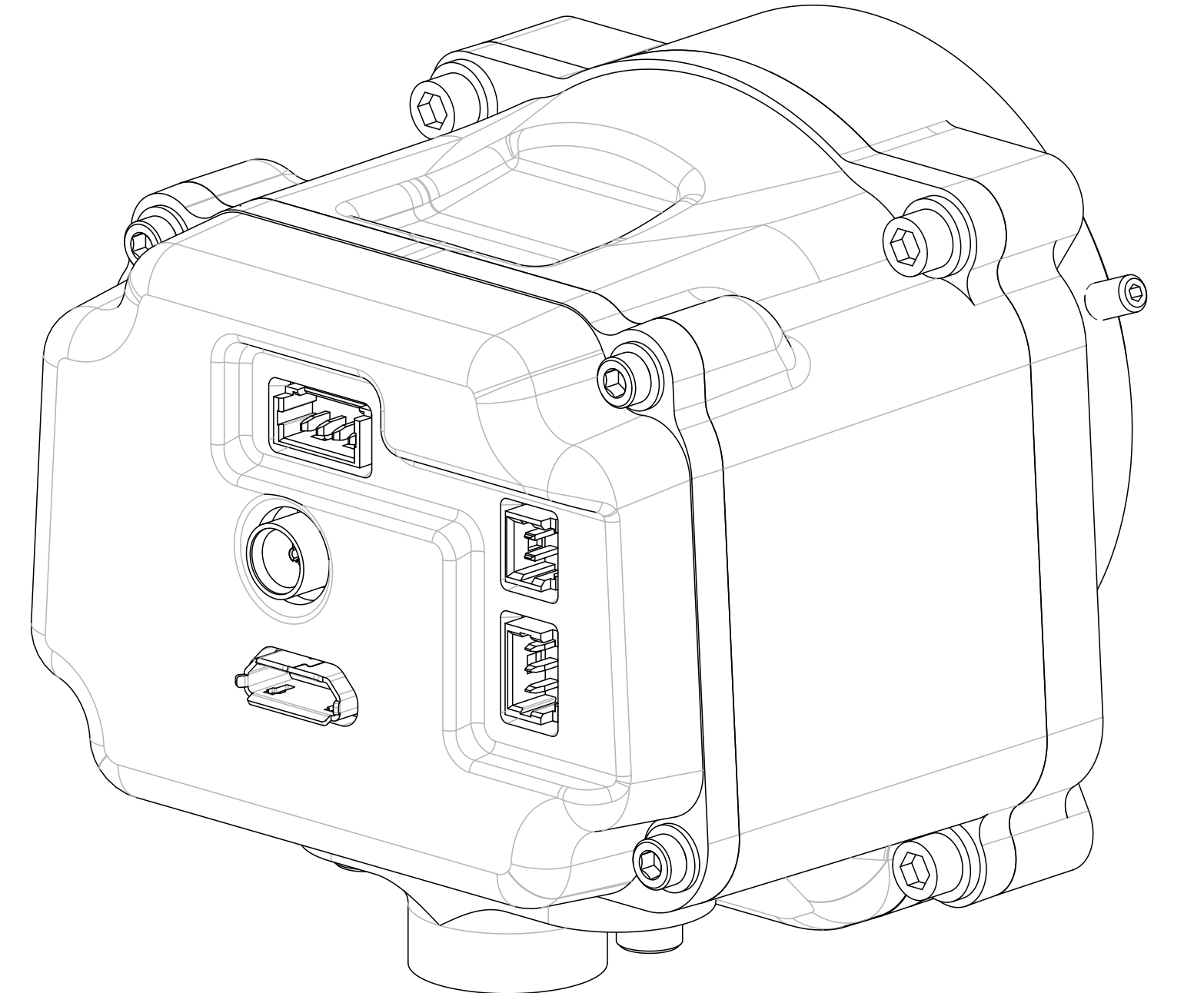
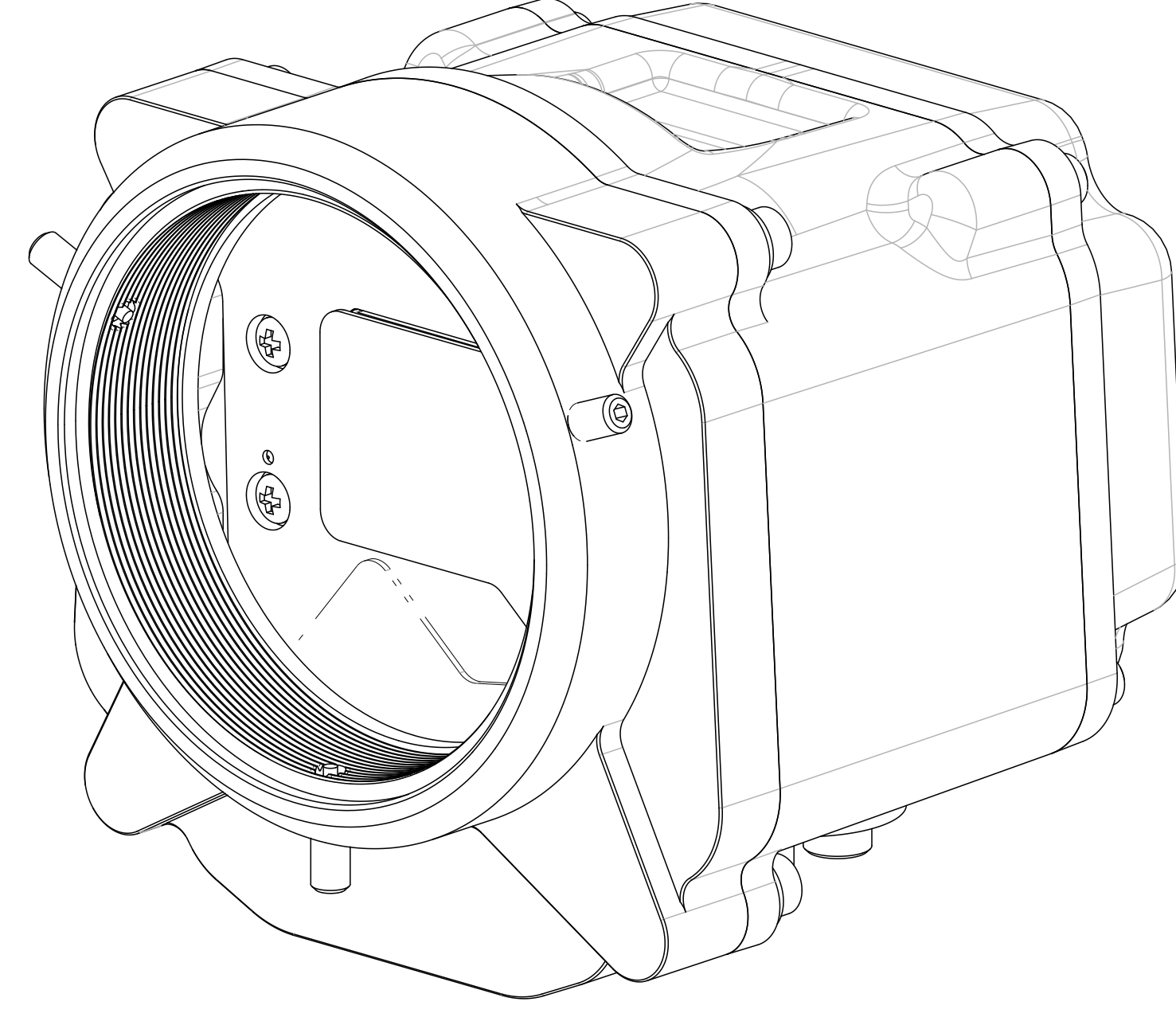
FOR DIMENSIONS NOT SHOWN
SEE SHEET 1

SIZE E	CAGE CODE 81395	DWG NO 8507468	REV -
SCALE: 3/1		SHEET 2	



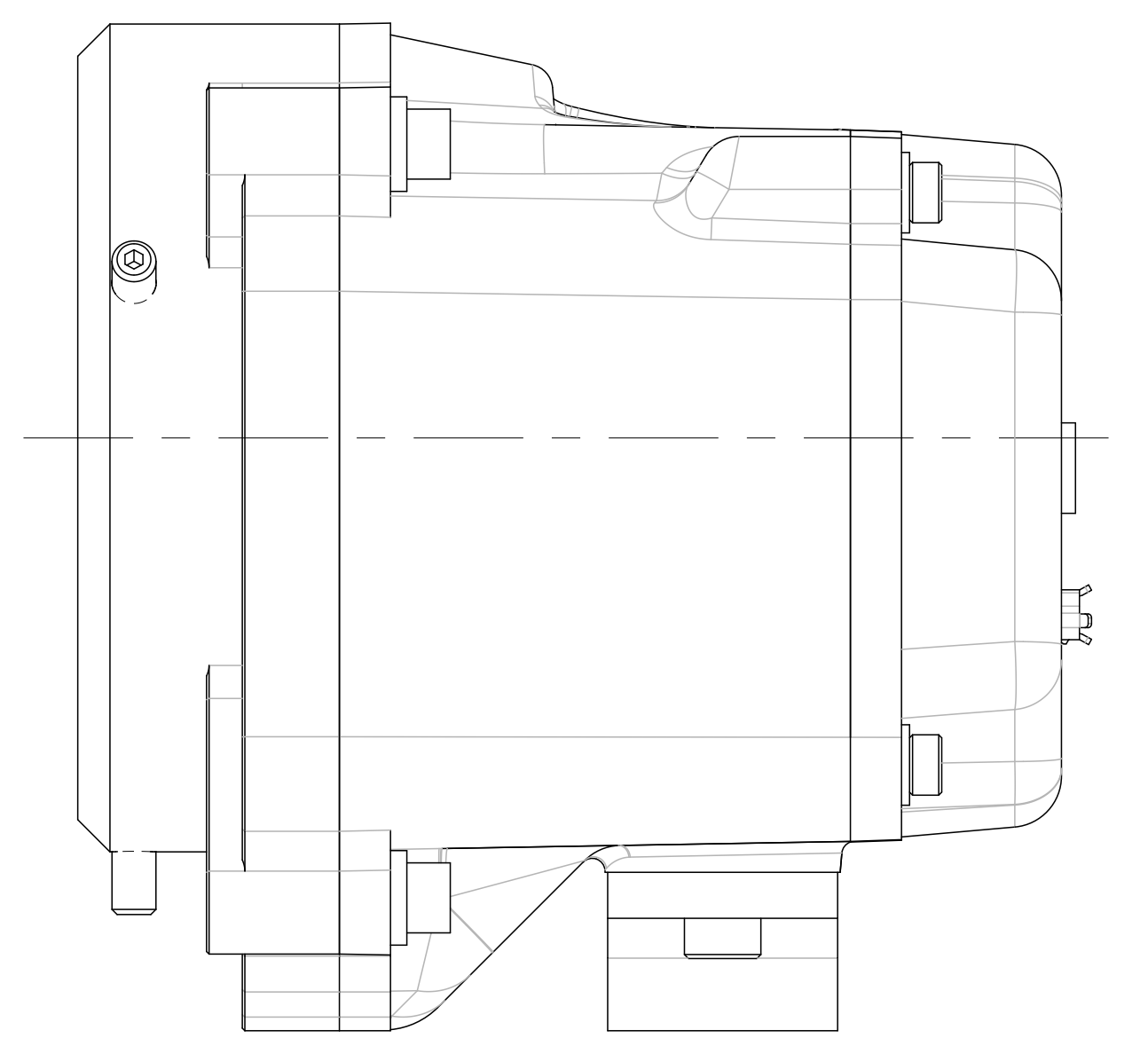
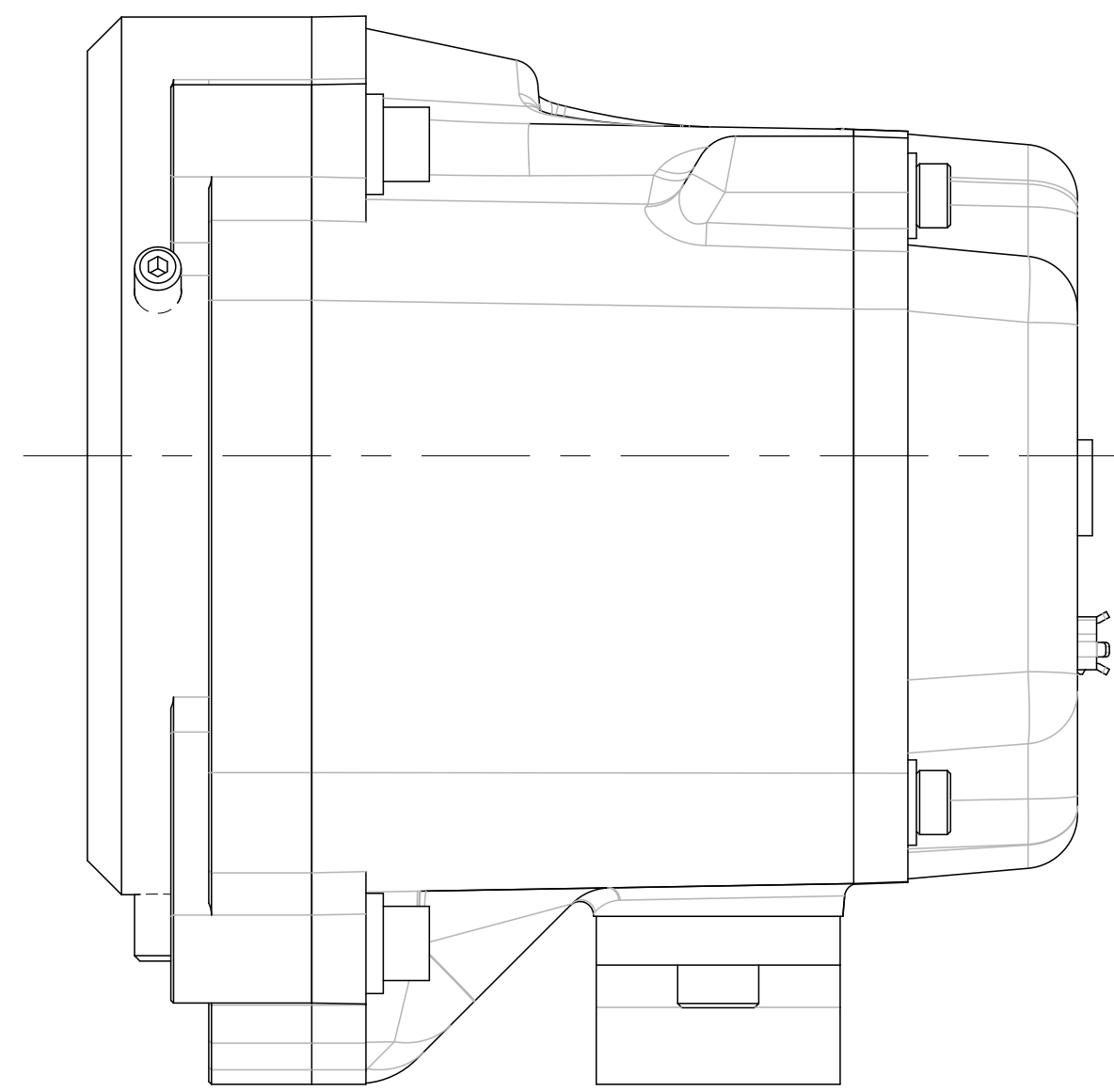
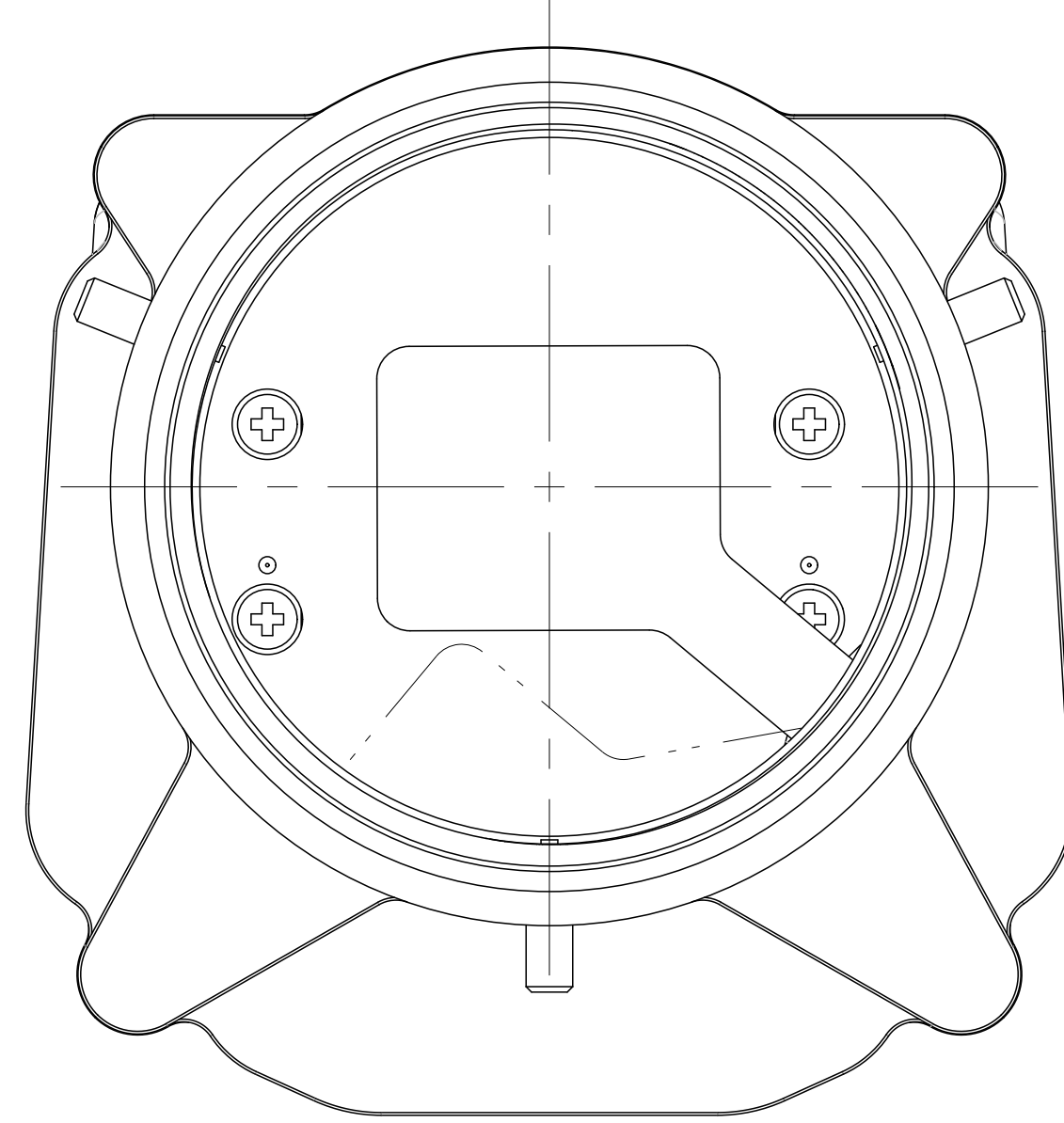
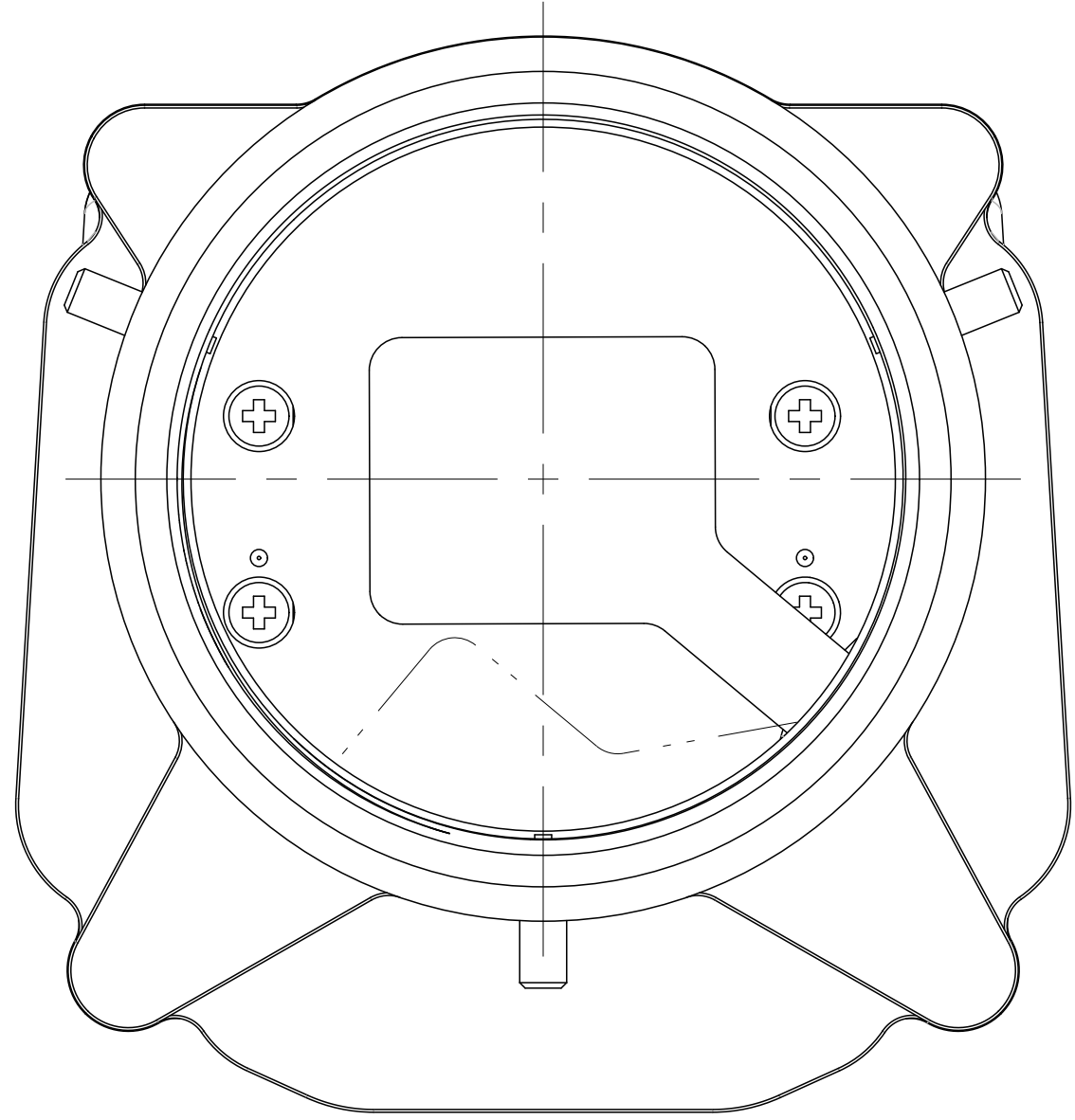
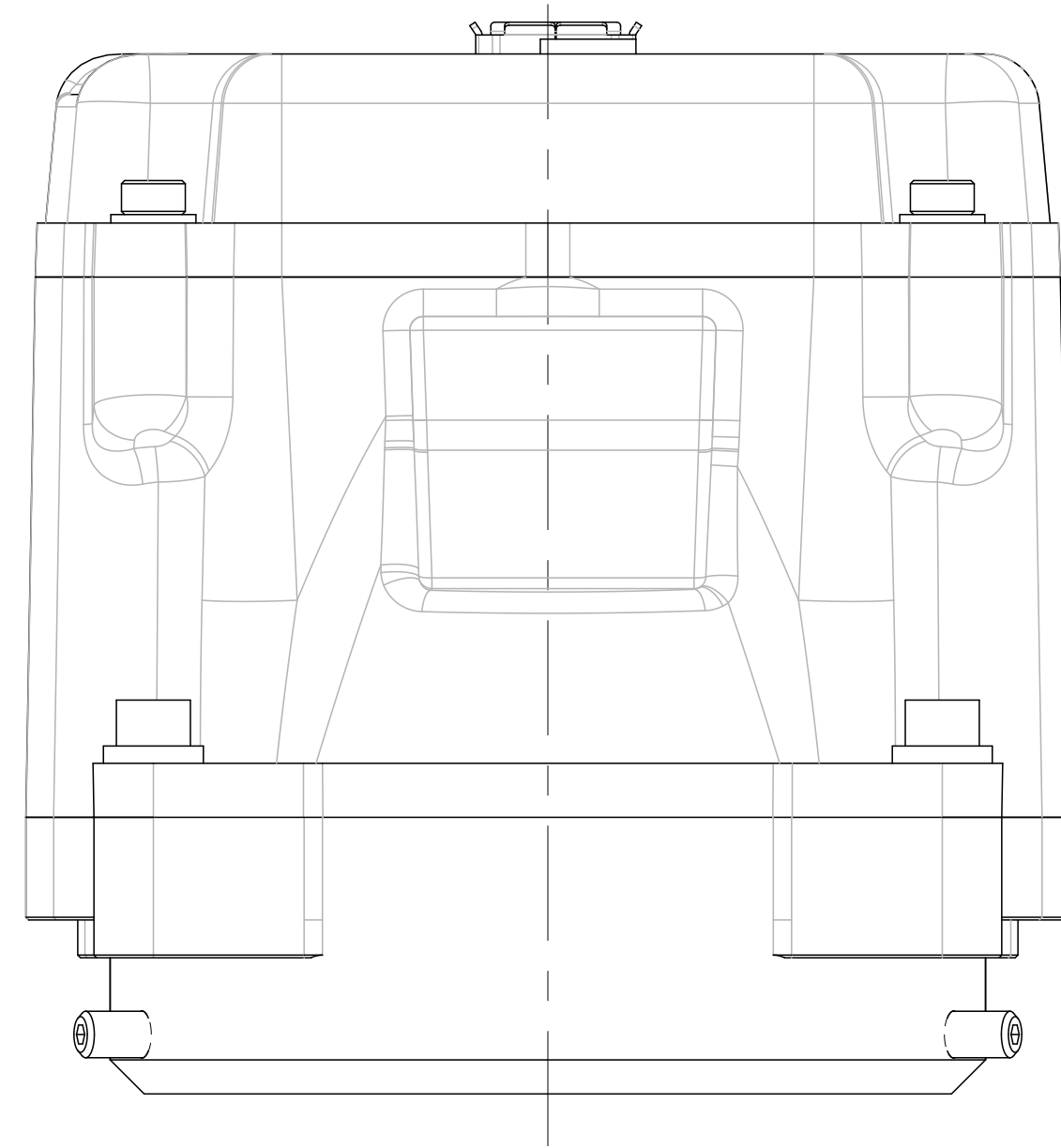
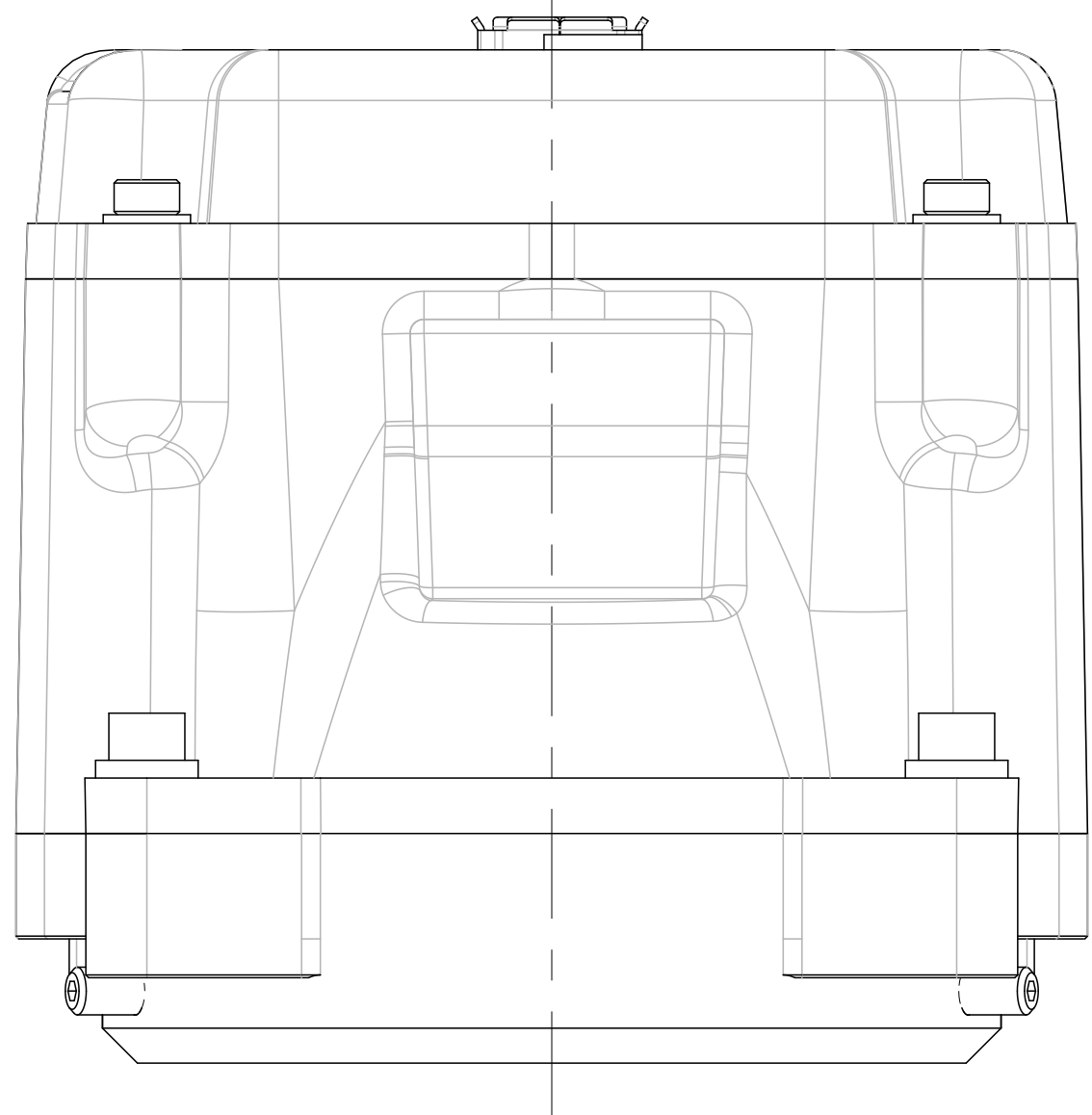
MICROIR CAMERA MODULE (SHORT BWD) SHOWN WITH

- TCP (THERMALLY CONDUCTIVE PLASTIC) HOUSING COMPONENTS
- SIMPLE LENS MOUNT; NO SIDE MOUNTING FEATURES AVAILABLE
- NO LENS; SEE BAE ENGINEERING FOR LIST OF COMPATIBLE LENSES
- EVALUATION I/O PBA
- TRIPOD KIT ACCESSORY SHOWN



MICROIR CAMERA MODULE (LONG BWD) SHOWN WITH

- TCP (THERMALLY CONDUCTIVE PLASTIC) HOUSING COMPONENTS
- SIMPLE LENS MOUNT; NO SIDE MOUNTING FEATURES AVAILABLE
- NO LENS; SEE BAE ENGINEERING FOR LIST OF COMPATIBLE LENSES
- EVALUATION I/O PBA
- TRIPOD KIT ACCESSORY SHOWN



DISTRIBUTION A - PUBLIC RELEASE UNLIMITED

THIS DOCUMENT DESCRIBES COMMODITIES, TECHNOLOGY OR SOFTWARE
WHOSE EXPORT FROM THE UNITED STATES MUST BE IN ACCORDANCE
WITH EXPORT ADMINISTRATION REGULATIONS (EAR). DIVERSION
CONTRARY TO U.S. LAW IS PROHIBITED.

DISCLAIMER AND COPYRIGHT

THIS DOCUMENT GIVES ONLY A GENERAL DESCRIPTION OF THE PRODUCT(S)
AND SERVICE(S) AND, EXCEPT WHERE EXPRESSLY PROVIDED OTHERWISE,
SHALL NOT FORM ANY PART OF ANY CONTRACT.
FROM TIME TO TIME, CHANGES MAY BE MADE IN THE PRODUCTS OR THE
CONDITIONS OF SUPPLY.

BAE SYSTEMS IS A REGISTERED TRADEMARK OF BAE Systems plc.
2016 BAE SYSTEMS. ALL RIGHTS RESERVED

FOR DIMENSIONS NOT SHOWN
SEE SHEET 1

SIZE	CAGE CODE	DWG NO	REV
E	81395	8507468	-
SCALE: 3/1		SHEET 3	