



Is Now Part of



**ON Semiconductor®**

To learn more about ON Semiconductor, please visit our website at  
[www.onsemi.com](http://www.onsemi.com)

ON Semiconductor and the ON Semiconductor logo are trademarks of Semiconductor Components Industries, LLC dba ON Semiconductor or its subsidiaries in the United States and/or other countries. ON Semiconductor owns the rights to a number of patents, trademarks, copyrights, trade secrets, and other intellectual property. A listing of ON Semiconductor's product/patent coverage may be accessed at [www.onsemi.com/site/pdf/Patent-Marking.pdf](http://www.onsemi.com/site/pdf/Patent-Marking.pdf). ON Semiconductor reserves the right to make changes without further notice to any products herein. ON Semiconductor makes no warranty, representation or guarantee regarding the suitability of its products for any particular purpose, nor does ON Semiconductor assume any liability arising out of the application or use of any product or circuit, and specifically disclaims any and all liability, including without limitation special, consequential or incidental damages. Buyer is responsible for its products and applications using ON Semiconductor products, including compliance with all laws, regulations and safety requirements or standards, regardless of any support or applications information provided by ON Semiconductor. "Typical" parameters which may be provided in ON Semiconductor data sheets and/or specifications can and do vary in different applications and actual performance may vary over time. All operating parameters, including "Typicals" must be validated for each customer application by customer's technical experts. ON Semiconductor does not convey any license under its patent rights nor the rights of others. ON Semiconductor products are not designed, intended, or authorized for use as a critical component in life support systems or any FDA Class 3 medical devices or medical devices with a same or similar classification in a foreign jurisdiction or any devices intended for implantation in the human body. Should Buyer purchase or use ON Semiconductor products for any such unintended or unauthorized application, Buyer shall indemnify and hold ON Semiconductor and its officers, employees, subsidiaries, affiliates, and distributors harmless against all claims, costs, damages, and expenses, and reasonable attorney fees arising out of, directly or indirectly, any claim of personal injury or death associated with such unintended or unauthorized use, even if such claim alleges that ON Semiconductor was negligent regarding the design or manufacture of the part. ON Semiconductor is an Equal Opportunity/Affirmative Action Employer. This literature is subject to all applicable copyright laws and is not for resale in any manner.

# AN-6611

## Binary/BCD Gain Programmed Amplifiers

Many systems require logic controlled Gain Programmable Amplifiers (GPA) for signal preconditioning, level control and dynamic range expansion. The system sets GPA requirements for accuracy, speed and signal handling capability, limiting the type used. Conventional CMOS analog switches limit signal handling to  $\pm 7.5$  V and accuracy to 1%. High voltage CMOS or JFET analog switches increase both accuracy and signal handling ( $\pm 10$  V to  $\pm 15$  V) but at a greater cost. Programmable amplifiers using current mode analog switches have the highest signal handling capability ( $\pm 25$  V) with high accuracy, speed and low cost.

In reality, the logic controlled GPA is a multiplying digital-to-analog converter (multiplying D/A). The D/A input is the reference node which is multiplied by the digital input. Multiplying D/A converters have been available for some time in module, hybrid and monolithic form but suffer from high cost and poor signal handling capability ( $\pm 10$  V maximum).

Large signal handling ( $\pm 25$  V), moderate cost multiplying D/A converters can be built using monolithic current mode analog switches, an op amp and a few resistors.

Unlike conventional analog switches, only signal current is switched at the virtual ground of an op amp with current mode analog switches. Limiting the voltage across the switch to a few hundred millivolts, power supplies, logic interface and level translator circuits are eliminated allowing the JFET switches to be driven directly by standard logic.

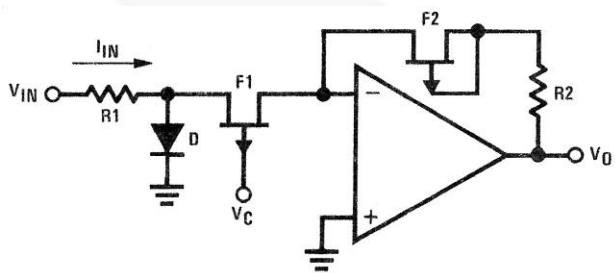


Figure 1. Current Mode Analog Switch

A logic "0" turns the switch ON with a logic "1" shutting the switch OFF by pinching the JFET OFF. The diode is used to clamp the source to drain voltage to about 0.7 V in the switch OFF state. The series JFET in the feedback path is used to compensate for the ON resistance of the switch JFET.

Current through the switch is determined by the input resistor, R1, the switch ON resistance and the input voltage,  $V_{IN}$ . Scaling of the output voltage is accomplished with the feedback resistor, setting the gain of the amplifier.

$$A_V = \frac{R_2 + R_{ON2}}{R_1 + R_{ON1}} \quad (1)$$

A 4-bit multiplying D/A converter can be built using a quad current mode switch, 4 binary weighted resistors (R, 2R, 4R, and 8R) and an op amp. The output voltage will be a function of the feedback resistor, input resistors and the logic state of the JFET gates,  $G_N$ .

The number of bits is expanded by cascading another quad current switch and resistor array to the first. Instead of continuing the binary progression of the input resistors, (16R, 32R, etc), current splitting resistors are used such that the same resistor array (R, 2R, 4R, 8R) is used for the additional bits, minimizing the number of resistor values required for higher order converters.

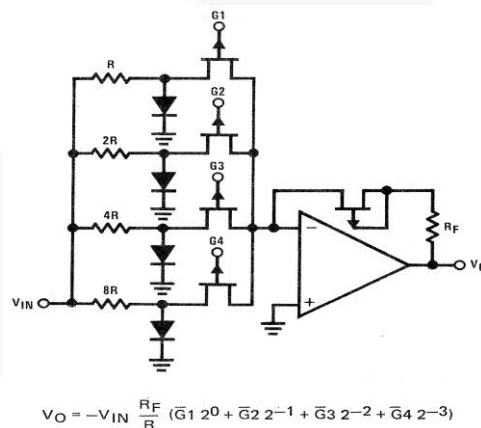


Figure 2. 4-Bit Multiplying D/A Converter

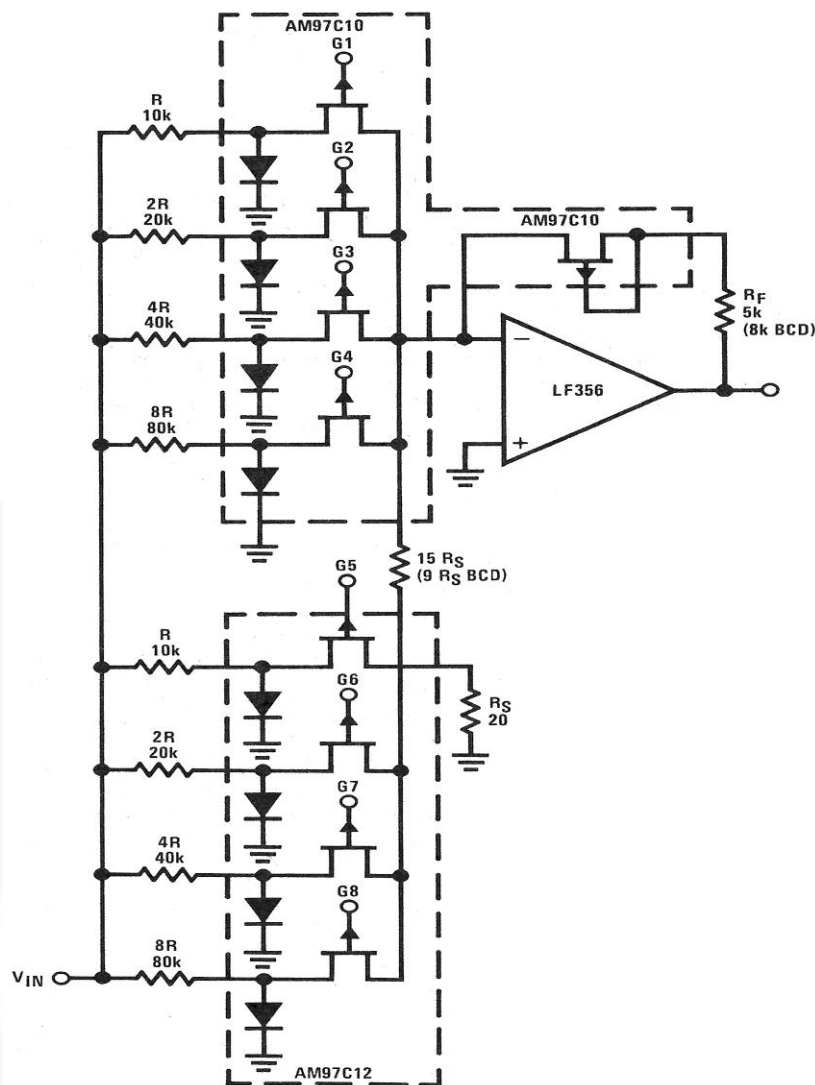


Figure 3. 8-Bit Multiplying D/A Using Cascaded 4-Bit Sections

Binary weighting requires a  $1/16$  current split for the second switch quad while BCD weighting requires a  $1/10$  split.

There are two basic switch configurations available that are optimized for a variety of logic drives: TTL or CMOS. Multiple independent switches (four by SPST) and a four channel multiplex version with a series compensation JFET.

Practical limitations in using monolithic current mode analog switches need consideration. Resistor values and tolerance impacted by switch resistance is minimized by increasing resistor values without regard, but limits bandwidth and creates leakage errors at elevated temperatures. Using resistors that are too small, increases switch resistance errors. Current saturation (increased switch resistance) occurs when the switch current approaches the JFET saturation current,  $I_{DSS}$ . High currents also cause  $I_G(ON)$ , current lost through the gate, as the diode and JFET source to gate diode become forward biased. An input resistor value of 10 k limits the switch current to less than 2 mA minimizing both leakage and switch resistance

problems. For example, the gain accuracy at unity gain using the compensation JFET is less than 0.05% with  $R = R_F = 10$  k.

The current shunt resistor used in cascading switches should be kept small to minimize the voltage drop, keeping the JFET drains near ground. Values of  $R_S$  should be less than  $100 \Omega$  (20 typical).

Resistor tolerance will be determined by converter resolution, i.e., the number of bits ( $N$ ). For example, an 8-bit binary D/A converter will have  $2^N - 1$  or 255 steps (99 for BCD) or different gains. The resolution or smallest step is (least significant bit)  $1/2^N$  of the full-scale value (0.0039). Typical accuracy specifications for D/A converters are stated as 1 LSB or  $\pm 1/2$  LSB.

This works out to be  $\pm 0.2\%$  for the 8-bit binary unit. Errors in the feedback resistor directly affect the output of the converter. The most significant resistor,  $R$ , contributes  $1/2$  full-scale, reducing its error contribution by a factor of 2. The same is true for the rest of the resistors with

contributions of 1/4, 1/8, etc. Using a resistor tolerance of 0.1% for the feedback resistor, 0.2% for the 2 most significant resistors (R, 2R), 0.5% for the 3rd and 1% for the 4th and 5th switches allows 5% resistors to be used in the 6th, 7th and 8th switch positions.

Using the above information, 4-bit or more binary/BCD gain programmable amplifiers can be built with large signal handling capability, few parts and easily adjustable gain or attenuation. Figure 3 shows a practical 8-bit binary/BCD GPA with gains of 0.996 (binary) with  $R_F = 5\text{ k}$  and 0.99 (BCD) with  $R_F = 8\text{ k}$ . For other gains, only the feedback resistor need be changed.

$$\begin{aligned} \text{\% error} &= \left[ \epsilon_f^2 + \left(\frac{\epsilon_R}{2}\right)^2 + \left(\frac{\epsilon_{2R}}{2^2}\right)^2 + \dots + \left(\frac{\epsilon_{nR}}{2^n}\right)^2 \right]^{1/2} \\ \text{or} & \\ \text{\% error} &= \left[ (0.1)^2 + \left(\frac{0.2}{2}\right)^2 + \left(\frac{0.2}{4}\right)^2 + \dots + \left(\frac{5}{256}\right)^2 \right]^{1/2} = \pm 0.198\% \end{aligned} \quad (2)$$

$\epsilon_f$  = tolerance of feedback resistor  
 $\epsilon_R$  = tolerance of most significant resistor  
 $\epsilon_{nR}$  = tolerance of Nth resistor

**Author:** John Maxwell, Feb 1977

#### DISCLAIMER

FAIRCHILD SEMICONDUCTOR RESERVES THE RIGHT TO MAKE CHANGES WITHOUT FURTHER NOTICE TO ANY PRODUCTS HEREIN TO IMPROVE RELIABILITY, FUNCTION, OR DESIGN. FAIRCHILD DOES NOT ASSUME ANY LIABILITY ARISING OUT OF THE APPLICATION OR USE OF ANY PRODUCT OR CIRCUIT DESCRIBED HEREIN; NEITHER DOES IT CONVEY ANY LICENSE UNDER ITS PATENT RIGHTS, NOR THE RIGHTS OF OTHERS.

#### LIFE SUPPORT POLICY

FAIRCHILD'S PRODUCTS ARE NOT AUTHORIZED FOR USE AS CRITICAL COMPONENTS IN LIFE SUPPORT DEVICES OR SYSTEMS WITHOUT THE EXPRESS WRITTEN APPROVAL OF THE PRESIDENT OF FAIRCHILD SEMICONDUCTOR CORPORATION.

As used herein:

1. Life support devices or systems are devices or systems which, (a) are intended for surgical implant into the body, or (b) support or sustain life, or (c) whose failure to perform when properly used in accordance with instructions for use provided in the labeling, can be reasonably expected to result in significant injury to the user.
2. A critical component is any component of a life support device or system whose failure to perform can be reasonably expected to cause the failure of the life support device or system, or to affect its safety or effectiveness.

ON Semiconductor and  are trademarks of Semiconductor Components Industries, LLC dba ON Semiconductor or its subsidiaries in the United States and/or other countries. ON Semiconductor owns the rights to a number of patents, trademarks, copyrights, trade secrets, and other intellectual property. A listing of ON Semiconductor's product/patent coverage may be accessed at [www.onsemi.com/site/pdf/Patent-Marking.pdf](http://www.onsemi.com/site/pdf/Patent-Marking.pdf). ON Semiconductor reserves the right to make changes without further notice to any products herein. ON Semiconductor makes no warranty, representation or guarantee regarding the suitability of its products for any particular purpose, nor does ON Semiconductor assume any liability arising out of the application or use of any product or circuit, and specifically disclaims any and all liability, including without limitation special, consequential or incidental damages. Buyer is responsible for its products and applications using ON Semiconductor products, including compliance with all laws, regulations and safety requirements or standards, regardless of any support or applications information provided by ON Semiconductor. "Typical" parameters which may be provided in ON Semiconductor data sheets and/or specifications can and do vary in different applications and actual performance may vary over time. All operating parameters, including "Typicals" must be validated for each customer application by customer's technical experts. ON Semiconductor does not convey any license under its patent rights nor the rights of others. ON Semiconductor products are not designed, intended, or authorized for use as a critical component in life support systems or any FDA Class 3 medical devices or medical devices with a same or similar classification in a foreign jurisdiction or any devices intended for implantation in the human body. Should Buyer purchase or use ON Semiconductor products for any such unintended or unauthorized application, Buyer shall indemnify and hold ON Semiconductor and its officers, employees, subsidiaries, affiliates, and distributors harmless against all claims, costs, damages, and expenses, and reasonable attorney fees arising out of, directly or indirectly, any claim of personal injury or death associated with such unintended or unauthorized use, even if such claim alleges that ON Semiconductor was negligent regarding the design or manufacture of the part. ON Semiconductor is an Equal Opportunity/Affirmative Action Employer. This literature is subject to all applicable copyright laws and is not for resale in any manner.

## PUBLICATION ORDERING INFORMATION

### LITERATURE FULFILLMENT:

Literature Distribution Center for ON Semiconductor  
19521 E. 32nd Pkwy, Aurora, Colorado 80011 USA  
**Phone:** 303-675-2175 or 800-344-3860 Toll Free USA/Canada  
**Fax:** 303-675-2176 or 800-344-3867 Toll Free USA/Canada  
**Email:** [orderlit@onsemi.com](mailto:orderlit@onsemi.com)

**N. American Technical Support:** 800-282-9855 Toll Free  
USA/Canada  
**Europe, Middle East and Africa Technical Support:**  
Phone: 421 33 790 2910  
**Japan Customer Focus Center**  
Phone: 81-3-5817-1050

**ON Semiconductor Website:** [www.onsemi.com](http://www.onsemi.com)  
**Order Literature:** <http://www.onsemi.com/orderlit>  
For additional information, please contact your local  
Sales Representative