

FASTUBE™

MODULAR MATERIAL HANDLING SYSTEM

Vol. 3

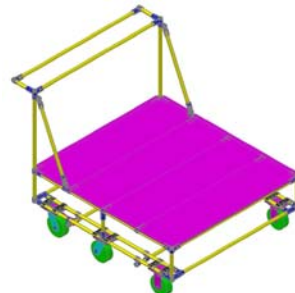


WWW.FASTUBE.COM

CONTENTS

PAGE #

About Us	2
Services	3
Standard Tubing	4
Specialty Tubing	4
Connectors	5
Connector Combo Sets	5
Specialty Connector Sets	5
Conveyor Track Mounts	6
Individual Conveyor Components	7
Assembled Conveyor	7
Leveling Feet	8
Accessories	9,10
3" Stem Casters	11
4" Stem Casters	11
Strap Caster Accessories	12
4" Strap Casters	12
6" Strap Casters	13
8" Strap Casters	13
Fasteners	14
Tools	14
Hitches	15,16
Custom Steel Structures	16
Shelf Materials and Tubing Covers	17
Engineering	18
Implemented Solutions - Display Boards	19
Implemented Solutions - Stands	20
Implemented Solutions - Worktables	20
Implemented Solutions - Workstations	21
Implemented Solutions - Carts	21,22,23
Implemented Solutions - Flow Racks	24,25
Design Request Form	26



ABOUT Us



“Service Disabled Veteran Owned Small Business”

Corporate / Manufacturing Headquarters
Canton, MI USA



FASTUBE is a system of resin coated steel tubing, steel bolt-together connectors, conveyors, casters, fasteners, and various accessories that allow our customers to design, build and implement modular material handling devices and operator assist devices.

Successful implementation of the **FASTUBE** system can result in increased productivity, improved ergonomics, and quality/safety gains, leading to increased profitability.

By utilizing the **FASTUBE** system as a tool, many companies have progressed toward their internal goals of practicing Lean Manufacturing Principles, eliminating waste in their process, and creating an environment that promotes continuous process improvement.

FASTUBE provides on-site recommendations and shop floor concept development to assist you in achieving your goals in process improvement through the implementation of the **FASTUBE** system.

Visit us on:



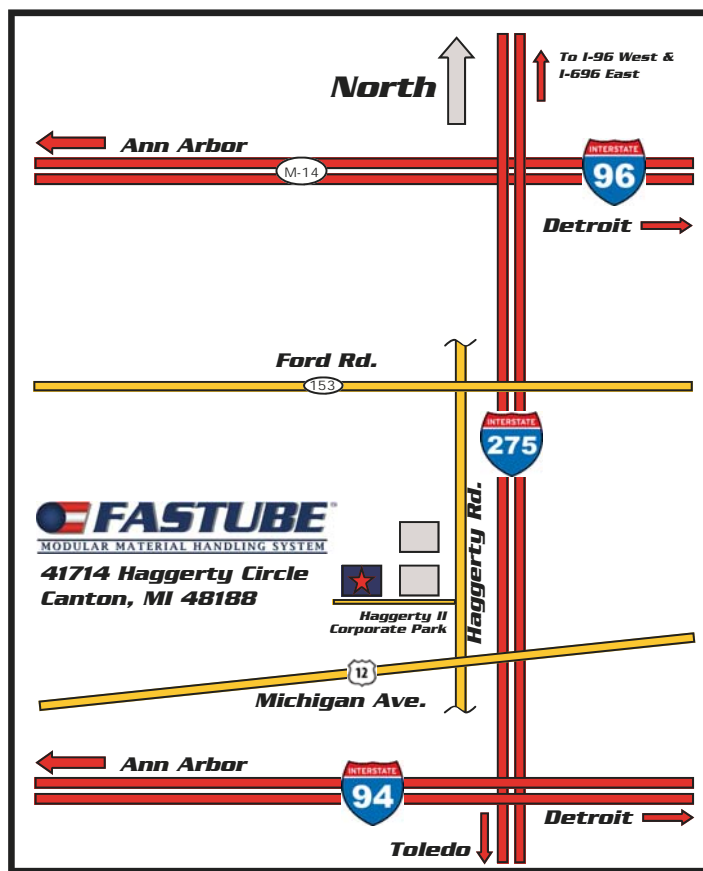
<http://www.linkedin.com/company/fastube-llc>



<http://www.youtube.com/user/FastubeUSA>



<https://twitter.com/Fastube>



SERVICES

FASTUBE products and services can be purchased in six primary ways:



Bulk Components

- ◆ Allows you to design, build, and modify structures as needed. Stock items ship within 24 hours after receiving order.



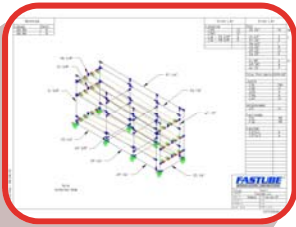
Kitted Structures

- ◆ Predetermined designs shipped to you with all the parts pre-cut and packaged in a kit for you to build.



Assembled Structures

- ◆ We assemble the structures at our facility and ship them complete and ready for use upon delivery.



CAD Designs / Services

- ◆ Engineering support in the form of AutoCAD 3D structure design, complete with bill of materials.



Starter Kits

- ◆ Standard and Custom Kits are available to help you when starting with the **FASTUBE** product. Ask a sales rep for details.



Custom Prototyping

- ◆ You send us the part or parts and we can design an application for you.

STANDARD TUBING



Our tubing is comprised of 20 Gauge 1.00" O.D. high strength steel, coated with an extruded plastic to bring our total O.D. to a nominal 1.080-1.090".

- ◆ Stock Lengths - 10' & 20'



10' Stock colors include:

Part #

- ◆ Black (TB - BK)
- ◆ Blue (TB - BL)
- ◆ Brown (TB - BN)
- ◆ Green (TB - GN)
- ◆ Gray (TB - GY)
- ◆ Ivory (TB - IV)
- ◆ Light Green (TB - LGN)
- ◆ Orange (TB - OR)
- ◆ Red (TB - RD)
- ◆ White (TB - WH)
- ◆ Yellow (TB - YL)

20' Stock colors include:

Part #

- ◆ Black (TB - BK-20)
- ◆ Blue (TB - BL-20)
- ◆ Brown (TB - BN-20)
- ◆ Green (TB - GN-20)
- ◆ Gray (TB - GY-20)
- ◆ Ivory (TB - IV-20)
- ◆ Light Green (TB - LGN-20)
- ◆ Orange (TB - OR-20)
- ◆ Red (TB - RD-20)
- ◆ White (TB - WH-20)
- ◆ Yellow (TB - YL-20)

DEFLECTION FORMULA

To determine the amount of deflection of a piece of **FASTUBE** tubing with a load in the center use the following formula:

$$d = W \times L^3 \times .000000055$$

Where:

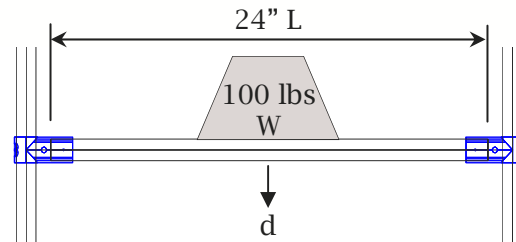
- d = deflection (in inches)
- W = weight (in pounds)
- L = length of tube (in inches)

Example:

A 100 lb. weight is placed on a 24" piece of Fastube tubing. The deflection would be:

$$d = 100 \text{ lbs.} \times (24")^3 \times .000000055$$

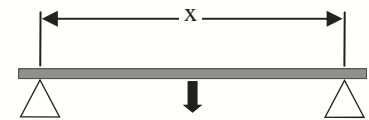
$$d = .076"$$



3-Point Bend Test Parameters

"x" Dimension	Force Of Permanent
1' 5"	610 lb.
2' 11"	350 lb.
3' 3"	319 lb.
3' 7"	282 lb.
4' 3"	242 lb.
4' 11"	227 lb.
5' 10"	182 lb.

- ◇ Force applied with 1" load applicator at a speed of 50 mm/min
- ◇ Force applied until permanent deflection occurs



SPECIALTY TUBING



- ◆ Stock Lengths - 4 Meter

- ◆ Slide Pipe

Part #

(TB-SP)



- ◆ Stock Lengths - 4 Meter

- ◆ ESD - Black

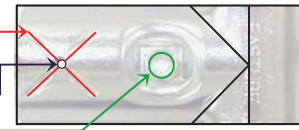
Part #

(TB-ESD)



CONNECTOR DETAILS

- Connector Plating: Zinc Chromate - Silver
- Stamped X for anti-rotation & anti-pull out
- Pilot hole for optional self drilling screws
- Connectors bolt together with a FS1 & FS2



Top View:
CN1

CONNECTORS



CN 1 - "2 WAY JOINT"



CN 2 - "4 WAY JOINT"



CN 3 - "3 WAY JOINT"



CN 4 - "3 WAY JOINT"



CN 5 - "MULTI ANGLE"



CN 6 - "MULTI ANGLE"



CN 7 - "90° JOINT"



CN 8 - "PARALLEL JOINT"



CONNECTOR COMBO SETS



CJ 1 - "TWO WAY JOINT"

JOINT COMBO INCLUDES:
 (2) CN1
 (1) FS1
 (1) FS2



CJ 2 - "CORNER JOINT"

JOINT COMBO INCLUDES:
 (1) CN2
 (1) CN3
 (2) FS1
 (2) FS2



CJ 3 - "FOUR WAY JOINT"

JOINT COMBO INCLUDES:
 (2) CN2
 (1) CN4
 (3) FS1
 (3) FS2



CJ 4 - "THREE WAY JOINT"

JOINT COMBO INCLUDES:
 (2) CN4
 (2) FS1
 (2) FS2



CJ 5 - "FIVE WAY JOINT"

JOINT COMBO INCLUDES:
 (4) CN2
 (4) FS1
 (4) FS2



CJ 6 - "90 DEGREE JOINT"

JOINT COMBO INCLUDES:
 (2) CN7
 (1) FS1
 (1) FS2



CJ 7 - "MULTI ANGLE JOINT"

JOINT COMBO INCLUDES:
 (2) CN5
 (2) CN6
 (2) FS1
 (2) FS2



CJ 11 - "PARALLEL JOINT"

JOINT COMBO INCLUDES:
 (2) CN8
 (1) FS1
 (1) FS2

SPECIALTY CONNECTOR SETS



CN 23
 ROTATING CN 8 JOINT



CN 24
 ROTATING CN 1 JOINT



DM-2004
 "DOUBLE MULTI-ANGLE"



DM-2031
 "45° JOINT"

*Specialty connectors include both joints and required plastic inserts, does not include fasteners

CONVEYOR TRACK MOUNTS

- Track Mount Plating: Zinc Chromate - Silver
- For use with CA1 or CA2
- Track Mounts secured by pressing onto tube



CN 9
CONVEYOR TRACK MOUNT
NO STOP



CN 10
CONVEYOR TRACK MOUNT
W/ TAB STOP



CN 10L
CONVEYOR TRACK MOUNT
W/ LONG TAB STOP



CN 11
CONVEYOR TRACK MOUNT
W/ RECESSED STOP



CN 11L
CONVEYOR TRACK MOUNT
W/ DEEP RECESSED STOP



CN 12
CONVEYOR TRACK/TUBE
MOUNT



CN 14
CONVEYOR TRACK
CENTER SUPPORT



CN 15
TUBE MOUNT



CN 15L
TUBE MOUNT
W/ STOP



DM-2038
TUBE MOUNT
W/ RECESSED STOP



CN 22
FLEXIBLE CONVEYOR-TO-
CONVEYOR TRACK MOUNT



CN 25
STIFF CONVEYOR-TO-
CONVEYOR TRACK MOUNT



INDIVIDUAL CONVEYOR COMPONENTS

- Ready-To-Ship Aluminum Conveyor Track sold in 10' lengths



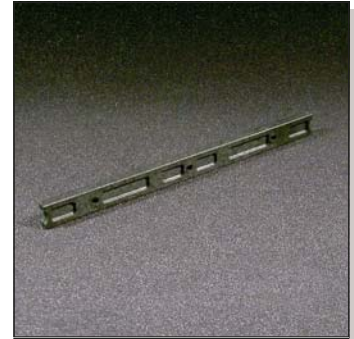
CN 16
CONVEYOR TRACK



CN 17
1 1/4" CONVEYOR WHEEL
(SMALL WHEEL)



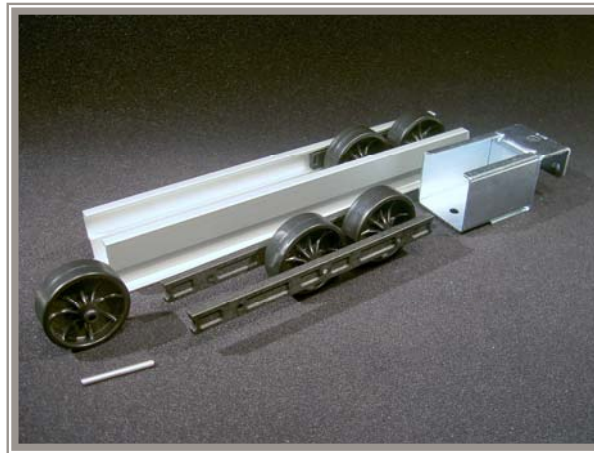
CN 18
1 3/4" CONVEYOR WHEEL
(LARGE WHEEL)



CN 19
6" SLIDE FOR CN 17
(HOLDS 4 WHEELS)



CN 20
6" SLIDE FOR CN 18
(HOLDS 3 WHEELS)



CN 21
STEEL AXLE FOR WHEEL

ASSEMBLED CONVEYOR

- Ready-To-Ship Assembled Conveyor Track sold in 10' lengths
- Also available in pre-cut lengths up to 20'



CA1
SMALL WHEEL CONVEYOR
TRACK



CA2
LARGE WHEEL CONVEYOR
TRACK



LEVELING FEET



AC 14
3" DIA. FOOT
(REQUIRES AC 16)



AC 15
2" DIA. FOOT
(REQUIRES AC 16)



AC 15 ESD
2" DIA. FOOT
(REQUIRES AC 16)

Exploded View:
AC 14/15 Assembly

Installation:

1. Clean tube of debris & burrs
2. Tap in AC16 into end of tube
3. Insert AC14/15 into AC16

AC 16

AC 14/15

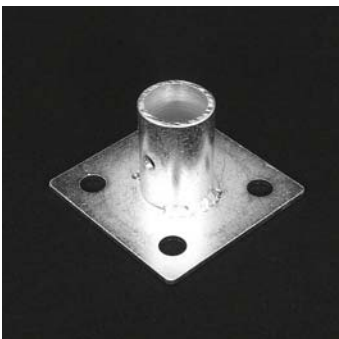
ACCESSORIES



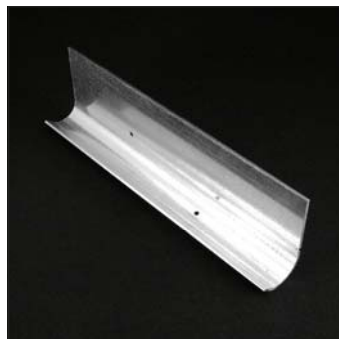
- Accessories Plating: Zinc Chromate - Silver



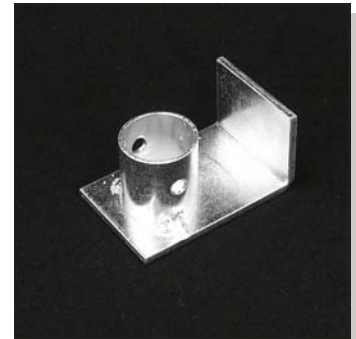
AC 3
PIPE CLAMP



AC 9
STANCHION MOUNT



AC 11
J-CHANNEL - 6' LENGTH
(USED FOR AKRO BINS)



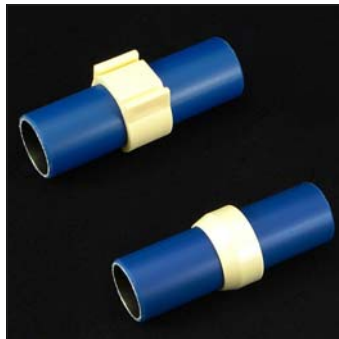
AC 12
TUBE HANGER



AC 13
FORK TUBE REST



AC 16
THREADED INSERT



AC 21
FLAT TOP PVC CLIP
AC 21B
BEVELED EDGE PVC CLIP



AC 28
FLAT SCREEN COMPUTER
MONITOR MOUNT





AC 35
CART CORNER BUMPER



CP 1
PLASTIC END CAP



CP 2
RUBBER END CAP



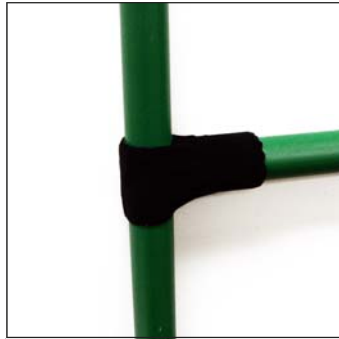
FA 240
2" X 4" CLEAR LABEL HOLDER



FA 600
1.25" X 6" LABEL HOLDER
(INCLUDES CLIPS FOR MOUNTING)



JC1-A
JOINT COVER FOR CN1
COMBO (TOP)



JC1-B
JOINT COVER FOR CN1
COMBO (MIDDLE)



JC2
JOINT COVER FOR
CN2/CN3 COMBO



DM-1001
SMALL STANCHION MOUNT



DM-1010
POLYURETHANE TOOL HOLDER



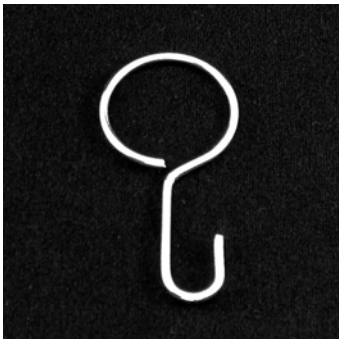
DM-1018
BIN SPEED REDUCER FOR CA1



DM-1019
EMPTY CONVEYOR SIGNAL - 10"



DM-2019
CORNER SHELF SUPPORT



DM-2022
METAL WIRE HOOK



DM-2023
TUBE CONNECTOR



DM-2025
FENCE/DOOR/GATE LOCK

STEM CASTER DETAILS

- AVAILABLE CASTER WHEEL MATERIAL -
3" STEM CASTERS - RUBBER, POLYURETHANE
4" STEM CASTERS - RUBBER, POLYURETHANE, ESD
- SPECIAL CASTERS AVAILABLE UPON CUSTOMER REQUEST
- CASTER PLATING: ZINC CHROMATE - SILVER



3" STEM CASTERS



CST3 L
3" LOCKING STEM CASTER
(REQUIRES AC7)



CST3 S
3" SWIVEL STEM CASTER
(REQUIRES AC7)



AC 7
GRIP RING CASTER INSERT

Exploded View:
CST3 Assembly

Installation:

1. Clean tube of debris & burrs
2. Tap in AC7 into end of tube
3. Insert CST3 into AC7

4" STEM CASTERS



CST4 L
4" LOCKING STEM CASTER



CST4 S
4" SWIVEL STEM CASTER



CST4 R
4" RIGID STEM CASTER

Exploded View:
CST4 S/L Assembly

Installation:

1. Clean tube of debris & burrs
2. Tighten **Nut** to expand rubber until CST4 inserts into tube snug
3. Use 12mm wrench to tighten nut located on the underside of the **Truck** until caster cannot be pulled out from tube



CST4 L P
4" LOCKING POLY STEM CASTER



CST4 S P
4" SWIVEL POLY STEM CASTER



CST4 R P
4" RIGID POLY STEM CASTER

Exploded View:
CST4 R Assembly

Installation:

1. Clean tube of debris & burrs
2. Tighten **Nut** to expand rubber until CST4 inserts into tube snug
3. Use 1/2" wrench to tighten nut located on the underside of the **Truck** until caster cannot be pulled out from tube
4. Install **U-Bolt** over joint and through the **Truck**.
5. Install **Washer & Nut** on both sides of U-Bolt and tighten.

STRAP CASTER DETAILS

- AVAILABLE CASTER WHEEL MATERIAL -
 - 4" STRAP CASTERS** - RUBBER, POLYURETHANE, ESD
 - 6" STRAP CASTERS** - RUBBER, POLYURETHANE, ESD
 - 8" STRAP CASTERS** - RUBBER, POLYURETHANE, ESD
- SPECIAL CASTERS AVAILABLE UPON CUSTOMER REQUEST
- CASTER PLATING: ZINC CHROMATE - SILVER



STRAP CASTER ACCESSORIES



CS1
UPPER CASTER STRAP



CS2
LOWER CASTER STRAP



FS3
CASTER BOLT
W/ LOCK WASHER

Remember!

**STRAP CASTER
ASSEMBLY REQUIRES:**

(2) CS1's

(2) CS2's

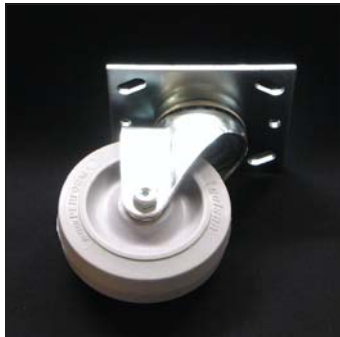
(2) FS3's

**PER WHEEL*

4" STRAP CASTERS



CS4 L
4" LOCKING STRAP CASTER



CS4 S
4" SWIVEL STRAP CASTER



CS4 R
4" RIGID STRAP CASTER



CS4 FL
4" FLOOR LOCK



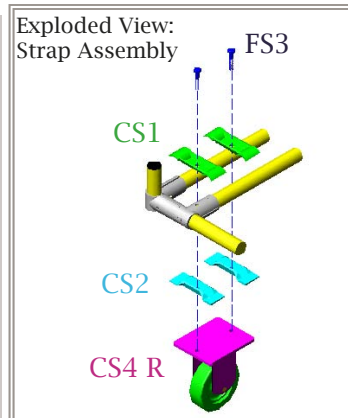
CS4 L P
4" LOCKING POLY STRAP CASTER



CS4 S P
4" SWIVEL POLY STRAP CASTER



CS4 R P
4" RIGID POLY STRAP CASTER



6" STRAP CASTERS



CS6 L B
6" LOCKING BALLOON
STRAP CASTER



CS6 S B
6" SWIVEL BALLOON
STRAP CASTER



CS6 R B
6" RIGID BALLOON
STRAP CASTER



CS6 FL
6" FLOOR LOCK



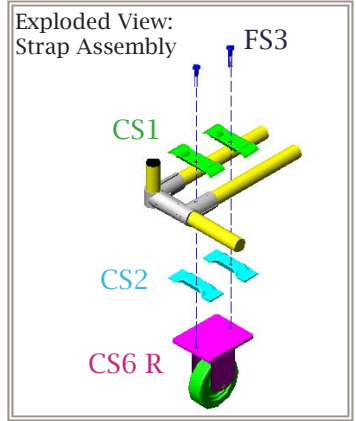
CS6 L P
6" LOCKING POLY
STRAP CASTER



CS6 S P
6" SWIVEL POLY
STRAP CASTER



CS6 R P
6" RIGID POLY
STRAP CASTER



8" STRAP CASTERS



CS8 L B
8" LOCKING BALLOON
STRAP CASTER



CS8 S B
8" SWIVEL BALLOON
STRAP CASTER

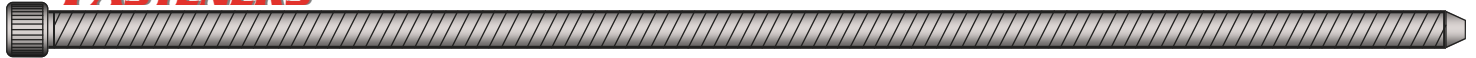


CS8 R B
8" RIGID BALLOON
STRAP CASTER



CS8 FL
8" FLOOR LOCK

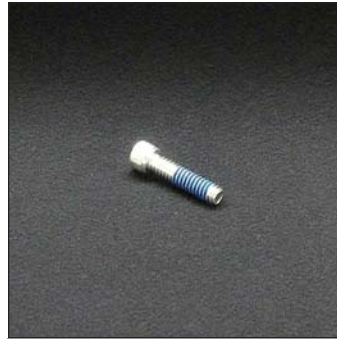
FASTENERS



FS1-E (BOLT) & FS2-E (NUT)
COMBO PART # FS-CE
FASTENER (ENGLISH)



FS1-M (BOLT) & FS2-M (NUT)
COMBO PART # FS-CM
FASTENER (METRIC)



FS1-EP-E
FASTENER (ENGLISH)
W/ MICROSPHERES EPOXY
FS1-EP-M
FASTENER (METRIC)
W/ MICROSPHERES EPOXY



FS1 TL
FASTENER (ENGLISH)
TOOL LESS BOLT



FS3
5/16" x 18 x 1 1/2"
CASTER BOLT W/ LOCK WASHER



FS5
5/16" x 18 x 2"
HITCH BOLT W/ LOCK WASHER



FS12
SELF TAP SCREW
1 1/4" BUGLE HEAD



FS 17
2" HITCH BOLT

TOOLS



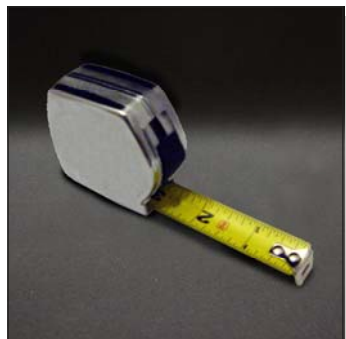
TL1
T-HANDLE ALLEN WRENCH
3/16" DRIVE
TL1-M
T-HANDLE ALLEN WRENCH
5MM DRIVE



TL2
L-SHAPE ALLEN WRENCH
3/16" DRIVE
TL2-M
L-SHAPE ALLEN WRENCH
5MM DRIVE



DT1
INNER/OUTER PIPE
DEBURRING TOOL



MT1
12' MEASURING TAPE

WWW.FASTUBE.COM

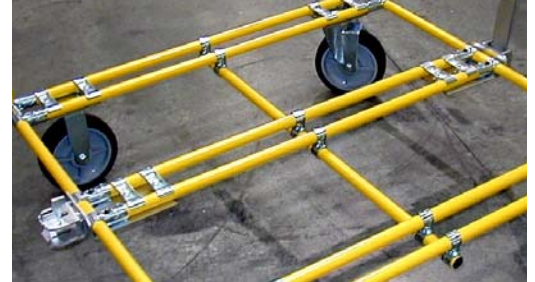
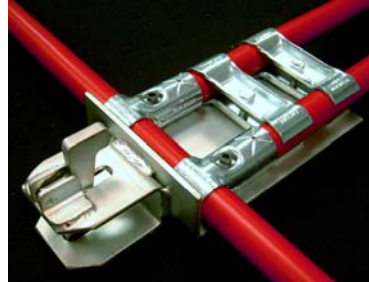
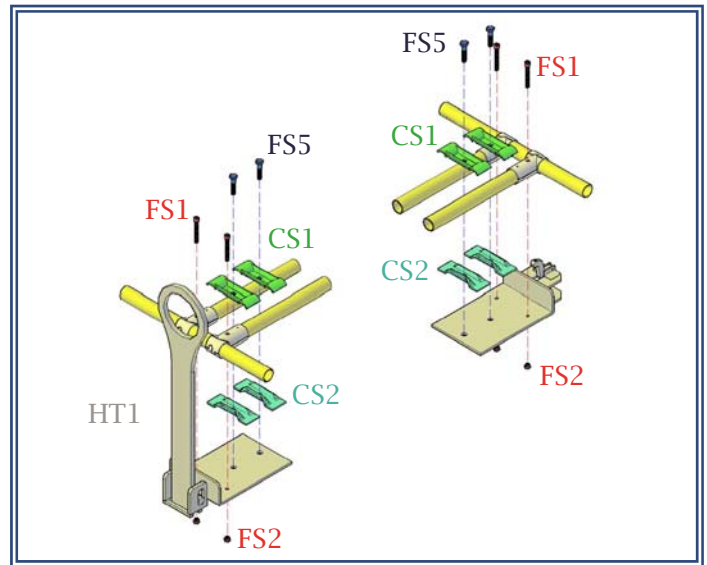
HITCHES



HT 1
HITCH SET

HT1 SET ASSEMBLY REQUIRES:

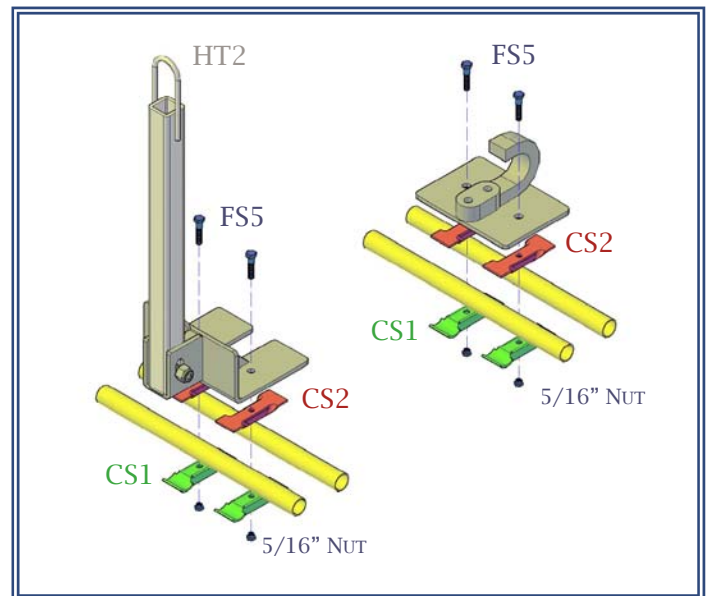
- ◆ (1) HT 1
- ◆ (4) CS1
- ◆ (4) CS2
- ◆ (4) FS2
- ◆ (4) FS5
- ◆ (4) FS17



HT 2
HITCH SET

HT2 SET ASSEMBLY REQUIRES:

- ◆ (1) HT 2
 - ◆ (4) CS1
 - ◆ (4) CS2
 - ◆ (4) FS5*
 - ◆ (4) 5/16" NUT*
 - ◆ (8) 5/16" WASHER*
- * INCLUDED WITH HT 2



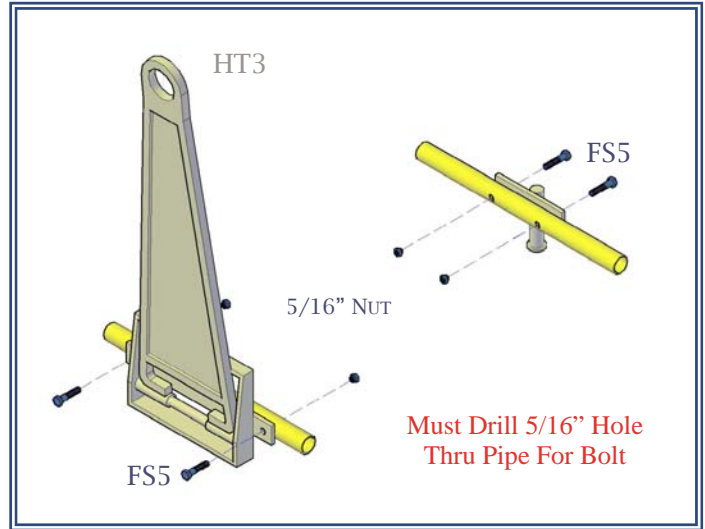
HITCHES



HT 3
SPRING HITCH SET

HT3 SET ASSEMBLY REQUIRES:

- ◆ (1) HT 3
 - ◆ (4) FS5*
 - ◆ (4) 5/16" NUT*
 - ◆ (8) 5/16" WASHER*
- * INCLUDED WITH HT 3



CS-SHIM
3/8" CASTER SPACER



AGC 1
AGC HITCH BRACKET



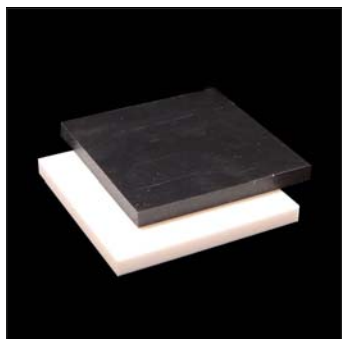
CUSTOM STEEL STRUCTURES

CONTACT SALES REP FOR DETAILS



SHELF MATERIALS & TUBE COVERS

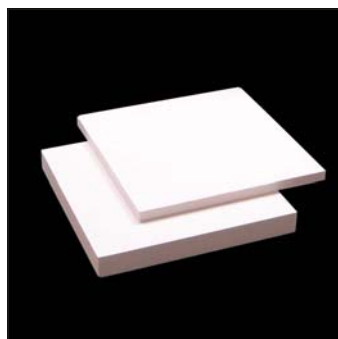
- PVC, PEG BOARD, HDPE, Ex-Cel, and MDF are available in 4' x 8' sheets
- POLYPRO is available in a 80" x 144" sheet
- MOTION MAT is available in a 24" x 96", custom sizes can be made to order
- FLOCK TAPE is sold per linear foot from a 54" x 180' roll. One linear foot = 12" x 54" piece
- All materials can be cut to a specific size if required



HDPE 38 / HDPE 38-B
WHITE OR BLACK
3/8" THICKNESS



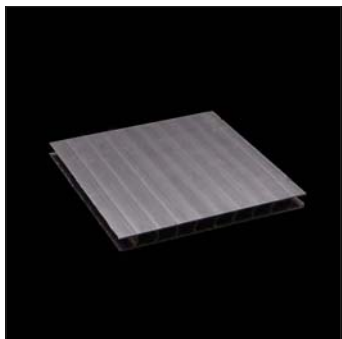
HDPE 12 / HDPE 34
WHITE
1/2" OR 3/4" THICKNESS



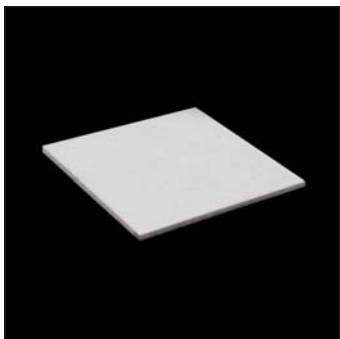
EX-CEL 6M / EX-CEL 12M
WHITE (OTHER COLORS AVAIL)
6MM OR 12MM THICKNESS



MDF 12 / MDF 34
LIGHT BROWN
1/2" OR 3/4" THICKNESS



POLYPRO 8M
BLACK PLASTIC CORRUGATED
8MM THICKNESS



PVC 18
GRAY
1/8" THICKNESS



PEG BOARD
WHITE FACE - ONE SIDE ONLY
5/16" THICKNESS



VINYL TUBE
UP TO 50' LENGTH
1/8" THICKNESS



FOAM
6' LENGTH
SEMI-SLIT
1/2" THICKNESS



FOAM-A
6' LENGTH
SLIT W/ADHESIVE STRIP
1/2" THICKNESS



MOTION MAT
1/8" THICKNESS
(FLOWS ON 96" DIRECTION)



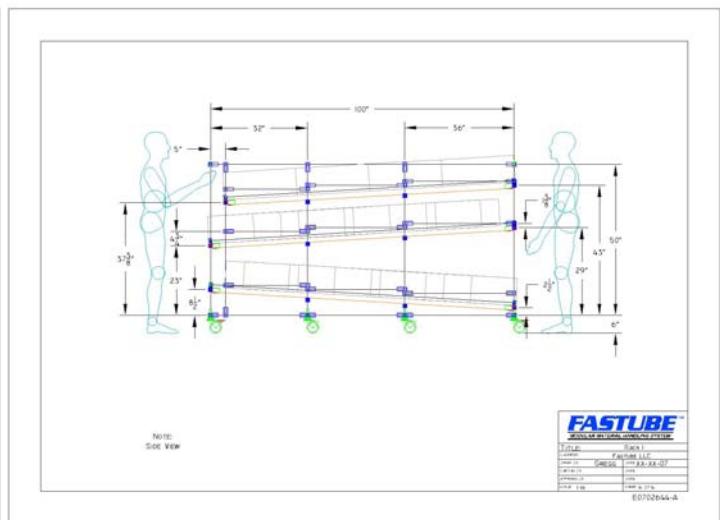
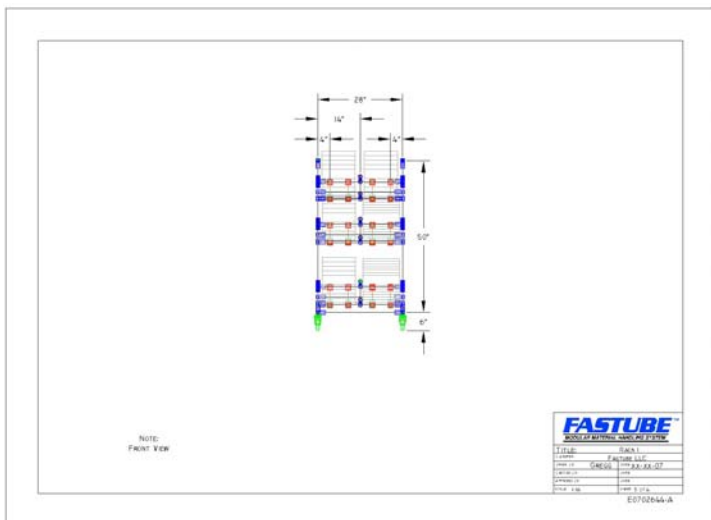
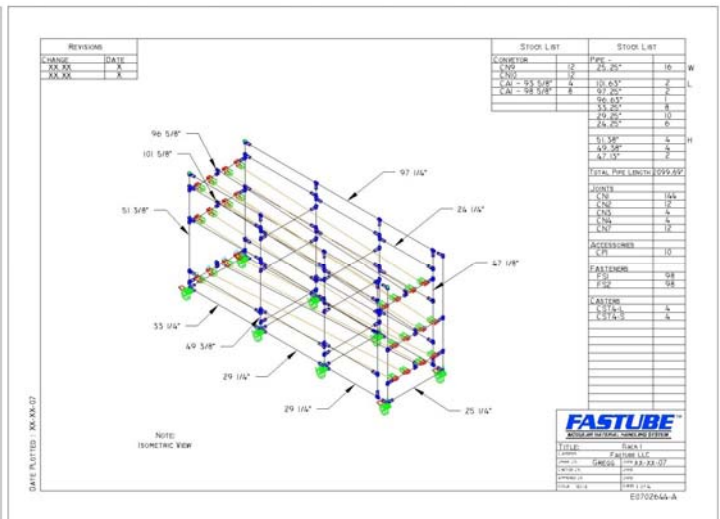
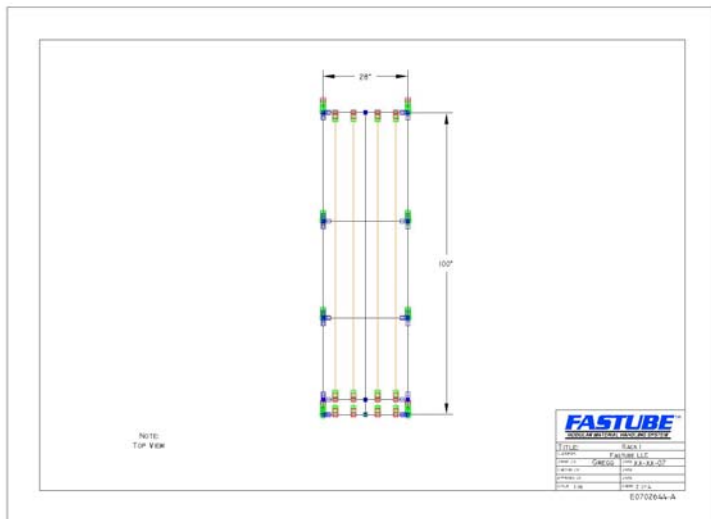
FLOCK TAPE
ADHESIVE BACKED FELT

DESIGN



- ◆ AutoCAD 3D Wireframe drawings are used to create customer design requests.
- ◆ Drawings can be also be drawn in AutoCAD 3D Solids, or converted to STEP files if requested.
- ◆ Design files can be exchanged electronically via e-mail between **FASTUBE** and our customers as AutoCAD, STEP, JPEG, or PDF files.

SAMPLE AUTOCAD DRAWING



WWW.FASTUBE.COM

DISPLAY BOARDS



5 SIDED ROTATING DISPLAY



4 SIDED ROTATING DISPLAY



4' x 8' DRY ERASE MESSAGE BOARD



30" x 30" VELCRO MESSAGE BOARD



4' x 8' VELCRO MESSAGE BOARD



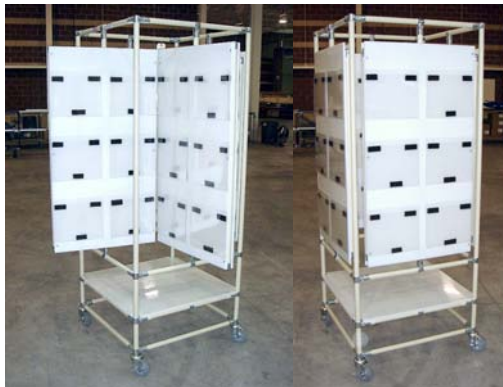
2 SIDED DISPLAY STAND



5 SIDED MESSAGE BOARD
w/ LEXAN



CUSTOM SAFETY
BOARD



DISPLAY RACK w/ 4 INDEPENDENT SWIVEL SIDES



4' x 6' MESSAGE BOARD w/ PEG BOARD SWING OUT



DOUBLE SIDED MESSAGE BOARD



5 SIDED VELCRO
MESSAGE BOARD



INFORMATION STAND



DISPLAY STAND
w/ PULL OUT DRAWER



INFORMATION DESK



SHADOW BOARD CART w/ DRAWER

STANDS & WORKTABLES



ROTATING PARTS HOPPER



PORTABLE PARTS STAND



MULTI-LEVEL PARTS STAND



EASY PICK TOTE STAND



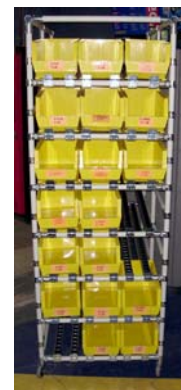
2 SIDED SMALL PARTS STAND



PASS THROUGH STORAGE RACK



6 LEVEL PASS THROUGH PARTS STAND



MULTI-LEVEL FLOW RACK



STORAGE RACK



CUSTOM PART TREE STAND



PORTABLE PARTS STAND



4 LEVEL STORAGE RACK



WORKTABLE



PORTABLE WORKTABLE



PORTABLE WORKTABLE

WORKSTATIONS & CARTS



ANGLED WORKSTATION W/ CASTERS



PACKING & SHIPPING STATION



WORKSTATION W/ TOOL RAIL



WORKSTATION W/
PULLOUT DRAWERS



INFORMATION CENTER DESK



L-SHAPE WORKSTATION



WORKSTATION
W/ LIGHT AND TOOL RAIL



WORKSTATION
W/ MOTION MAT



HEIGHT ADJUSTABLE WORKSTATION



L-SHAPE WORKSTATION W/HEIGHT ADJUSTERS AND TOOL BAR



HEIGHT ADJUSTABLE WORKTABLE



CUSTOM INVENTORY PICK CART



CUSTOM LINE SIDE CART



CART WITH CABINETS

CARTS



ENGINE BLOCK TIP-UP CART



PANEL TRANSPORT CART



HANGING PARTS CART



TUB COVER CART ON STEEL BASE



FOAM TRIM TRANSPORT CART
w/ AGC COMPATIBILITY



CLAM SHELL TRANSPORT CART



CUSTOM BAG CART



INTERLOCKING TUGGABLE CARTS



WIRE HARNESS TRANSPORT CART



STORAGE CART ON STEEL BASE



CART-2-FLOW RACK ON STEEL BASE



MULTI-LEVEL CART w/ DRAWER SLIDES



CARDBOARD DUNNAGE CART

CARTS



2 LEVEL PANEL DIVIDER CART



HANGING MANIFOLD CART



CRANKSHAFT TRANSPORT CART



CYLINDER HEAD SEQUENCE CART



CART W/ SHOCK LIFT TILT SHELF



PANEL SEPARATOR CART



ENGINE BLOCK TRANSPORT CART



LOW PROFILE TUGGER TRANSPORT CART



LIMO KIT CART



CUSTOM SMALL PARTS CART



PALLET TRANSPORT CART



TUGGABLE PALLET CART



CART W/ FOAM & PVC TUBING SLOTS

FLOW RACKS



FLOW RACK W/ GAS SHOCK ASSISTED ACCESS DOOR



HANGING BAG SEQUENCE CART



VERTICAL STORAGE RACKS W/ BAGS



FLOW RACK W/ FLAT PULL OUT AREA



ANGLED PRESENTATION FLOW RACK



FOOD SERVICE PRODUCTION LINE



FLOW RACK PACKING STATION W/ WORKTABLE



STAINLESS STEEL CHUTE RACK



FLOW RACK W/ LIGHT CURTAINS AND ALUMINUM WORKTABLE



LINE SIDE FLOW RACK W/ RETURN



WAREHOUSE FLOW RACKS

FLOW RACKS



FLOW RACK W/ PNEUMATIC LIFT ASSIST FOR LOAD END



PNEUMATIC LIFT ASSIST FOR LOAD END



PNEUMATIC TILT ASSIST FOR OPERATOR END



FLOW RACK W/ STEEL ROLLERS AND METER



FLOW RACK W/ STEEL ROLLERS AND METER



PACKING STATION FLOW RACK W/ WORKSURFACE



FLOW RACK W/ PICK-TO-LIGHT SYSTEM



PACKING RACK W/ REMOVABLE DIVIDERS



BUMPER FASCIA FLOW RACK



FLOW RACK W/ QUICK RETURN



MULTI-LEVEL FLOW RACK W/ WORKTABLE



OVER-THE-LINE FLOW RACK

Got a design you want us to start on? Copy, fill out, and fax this request form and we'll be happy to begin.

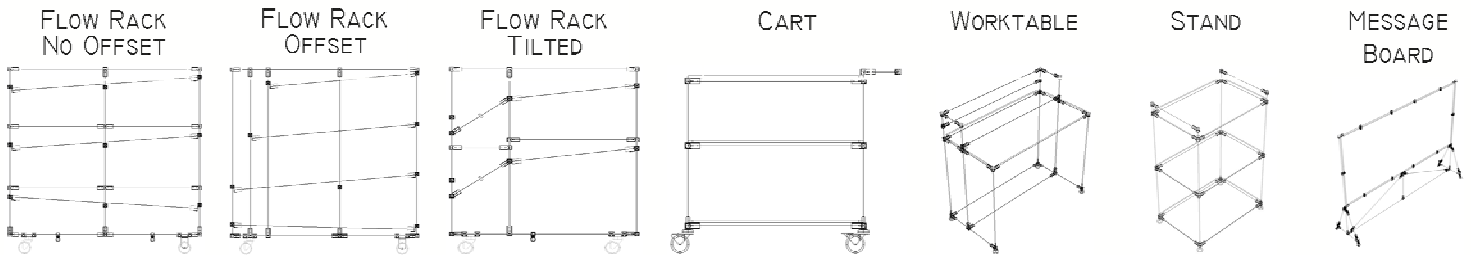
Fastube Design Request Form

NAME: _____ TITLE: _____ DATE: _____
COMPANY: _____ PHONE: () _____ FAX: () _____
EMAIL: _____

NOTE: ALL DIMENSIONS GIVEN ARE CONSIDERED CENTER OF PIPE TO CENTER OF PIPE, AND ARE IN INCHES.

NUMBER OF STRUCTURES REQUIRED: _____

PLEASE CIRCLE A DESIGN THAT MOST CLOSELY RESEMBLES YOUR REQUEST:



FOOTPRINT OF STRUCTURE: W _____ x L _____ x H _____

IF MESSAGE BOARD, BOARD SIZE: W _____ H _____

WILL YOU REQUIRE: CASTERS LEVELING FEET OTHER _____

OF INCOMING LEVELS: _____, RETURN LEVEL REQUIRED? _____
(UNLESS OTHERWISE NOTED, LEVELS WILL BE FLAT FOR CART, TABLE, AND STAND DESIGNS)

HEIGHT OF LEVELS FROM FLOOR: 1ST _____, 2ND _____, 3RD _____, 4TH _____, 5TH _____
(ADD 4" TO BOX OR TOTE HEIGHT FOR MIN. CLEARANCE)

OF TOTES AND BOXES PER LEVEL: 1ST _____, 2ND _____, 3RD _____, 4TH _____, 5TH _____

TOTAL WEIGHT STRUCTURE WILL BE HOLDING: _____ LBS; MAX WEIGHT PER LEVEL: _____ LBS.

SPECIAL REQUIREMENTS (IF ANY): _____

IF POSSIBLE, PLEASE TAKE A MOMENT TO SKETCH YOUR DESIGN BELOW:

FRONT VIEW

SIDE VIEW

Please Fax To 734.414.8279

A **Fastube** representative will contact you to confirm the receipt of your design request form, and answer any other questions

MATERIAL HANDLING SOLUTIONS THAT WORK FOR YOUR BUSINESS



41714 HAGGERTY CIRCLE, CANTON, MI 48188 TEL: 734.414.8230 FAX: 734.414.8279 EMAIL: SALES@FASTUBE.COM