



Latch-N-Lok

Product Presentation

Basics Portfolio



Agenda



1. Value Proposition
2. Product Overview
3. Product Specifications
4. Features & Benefits
5. Main Markets & Applications
6. Marcomm Tools

Latch-N-Lok



Value Proposition

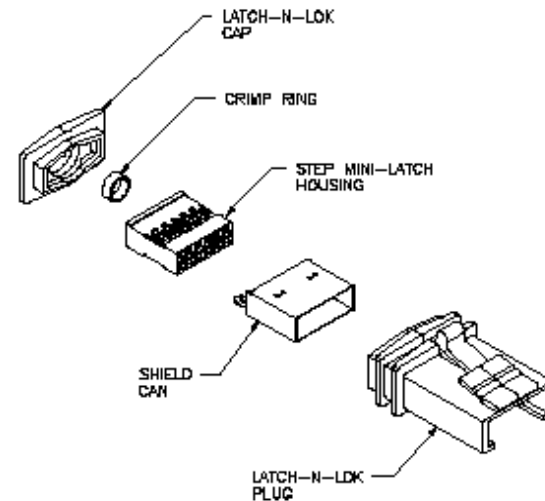
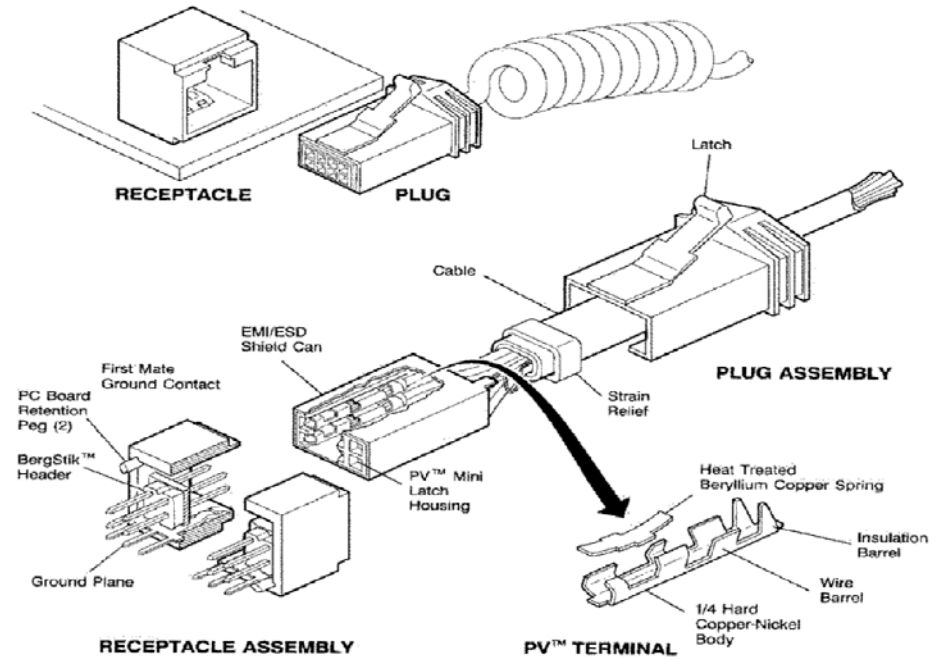
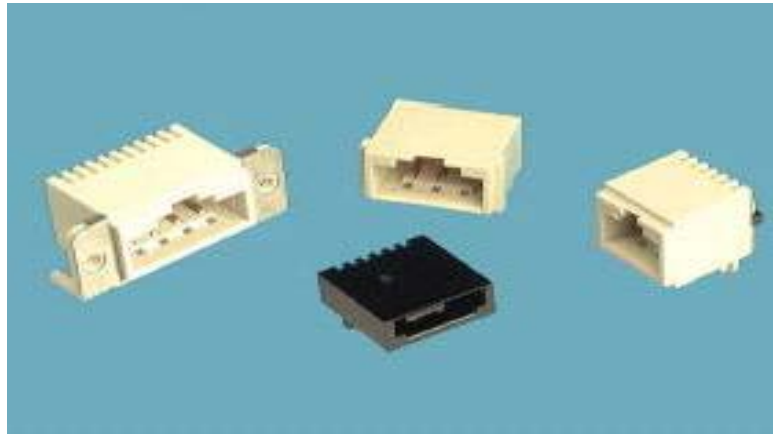
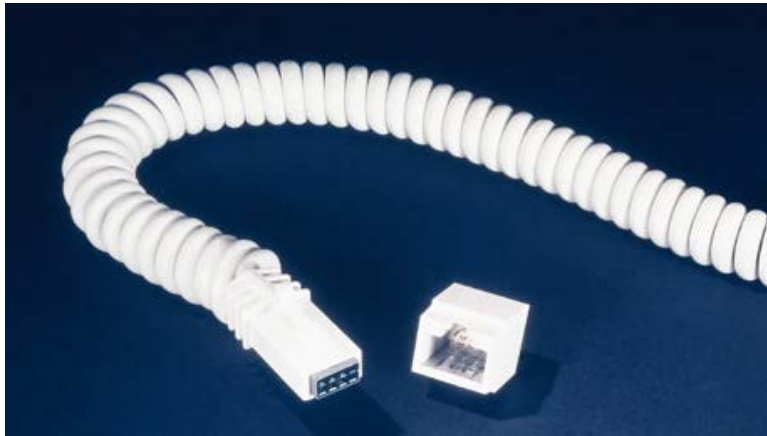
The Latch-N-Lok solution is **ultra-convenient** input/output connector system. It's a **versatile cable-to-board system** which includes PCB headers and cable connector kits for **signal, power, grounding and shielding applications**.

The quick disconnect system provides **positive latching** with an audible “click”. The **dual-metal Mini-PV™ contact design** enhances conductivity and maintains contact force integrity through 1000 mating cycles. The cable connectors accommodate a **wide variety of cable diameters** and wires ranging from **20AWG to 32AWG**. This solution supports **high speed, serial data transmission**.

Both **single row and dual row** are available.

Latch-N-Lok

Product Overview



Latch-N-Lok



Product Specifications

Product Facts

- Ultra-convenient input/output connector system
- Quick connect/disconnect convenience
- Support the medium speed capability of USB
- Enhanced shielding and grounding system
- RoHS compliant
- Lead Free, Halogen Free

Electrical Performances

- Current Rating: 3.0A Max

Mechanical Performances

- Durability : 1000 cycles

Environmental

- Operating Temperature : -55~85°C

Specifications

- Primary Industry Codes (SICs) Served

3575	Computer terminals
3577	Computer peripheral equipment
3578	Calculating equipment
3581	Automatic vending machines
3625	Relays and industrial controls
3812	Search and navigation equipment
3821	Laboratory apparatus
3822	Environmental controls
3823	Process control instruments
3824	Fluid meters and counting devices
3826	Analytical instruments
3845	Electromedical equip
5046	Commercial equip
5047	Medical and hospital equip
5049	Scientific equipment
5063	Wire and cable
7382	Security systems

Latch-N-Lok

Features & Benefits



Features	Benefits
Ergonomic Latching	Provides positive latching with an audible “click”, good hand-feeling
With shielding	Enhanced shielding and grounding system effectively manages EFI/RFI
Dual-metal Mini-PV™ contact design	Enhances conductivity and maintains contact force integrity through 1000 mating cycles. Mini-PV™ electrical contacts boost current capacity to 3 amps
Rohs Compliant, Lead-Free, Halogen-Free	Meets environmental, health and safety requirements

Latch-N-Lok

Main Markets & Applications

Special I/O

- USB + Power
- POS
- Medical Diagnostics
- Instrumentation
- Peripherals



Latch-N-Lok

Marcomm Tools

Available on FCI



- Technical Data Sheet

FCI

I/O CONNECTORS

LATCH-N-LOK™
 Mini-mated, Latching I/O Connector System
 Low Insertion Force, High Mechanical and Electrical Performance

DESCRIPTION
 Latch-N-Lok™ is a versatile cable-to-cable connector system designed for low insertion force and high reliability. The Latch-N-Lok™ family includes PCB receptacles and cable-to-cable connectors in round, square, and rectangular configurations. The Latch-N-Lok™ system offers a wide range of options for cable-to-cable and cable-to-board applications.



FEATURES & BENEFITS

- Latch-N-Lok™ system provides positive latching with an audible "click".
- High part-to-part repeatability.
- Low insertion force (up to 1.0 N) for easy assembly.
- High contact reliability (up to 1000 mating cycles).
- Choice of four contact configurations: 25, 37, 50, and 67 positions.
- Choice of four contact types: Shielded, Unshielded, Shielded, and Unshielded.
- Choice of four contact materials: Gold, Silver, Tin, and Copper.
- Easy to assemble cable-to-board applications without the need for a crimping tool.
- Cable connectors accommodate a wide range of cable diameters and wire gauges from 20AWG to 22AWG.
- Connector sizes range from 4 to 27 positions.
- Lead-free, RoHS-compliant contacts meet environmental regulations.

TARGET MARKETS / APPLICATIONS

- PCB Equipment
- Medical Instrumentation
- Test and Measurement
- Test and Diagnostic Equipment
- Test and Diagnostic Equipment
- Test and Diagnostic Equipment

- Product Specifications

Doc No:	GS-12-003	Doc Title:	PRODUCT SPECIFICATION	Doc Rev:	FCI
Doc Desc:	Latch & Lock	Doc No:	1 of 13	Doc Rev:	E
Doc Author:	C. Martinez	Doc Date:	10 April 08	Doc Status:	UNRESTRICTED

- 1.0 OBJECTIVE**
 This specification defines the performance, test, quality, and reliability requirements of the Latch & Lock as well as Latch Free product that meets the requirement of the European Union Directives of Restriction for Hazardous Substances (Directive 2002/95/EC).
- 2.0 SCOPE**
 This specification is applicable to the termination characteristics of the Latch & Lock family of products which provides a signal to signal and shield to ground termination system between a round cable and printed circuit board.
- 3.0 GENERAL**
 This document is composed of the following sections:
- | Paragraph | Title |
|-----------|---------------------------------|
| 1.0 | OBJECTIVE |
| 2.0 | SCOPE |
| 3.0 | GENERAL |
| 4.0 | APPLICABLE DOCUMENTS |
| 5.0 | REQUIREMENTS |
| 5.1 | Qualification |
| 5.2 | Material |
| 5.3 | Finish |
| 5.4 | Design and Construction |
| 6.0 | ELECTRICAL CHARACTERISTICS |
| 7.0 | MECHANICAL CHARACTERISTICS |
| 8.0 | ENVIRONMENTAL CONDITIONS |
| 9.0 | QUALITY ASSURANCE PROVISIONS |
| 9.1 | Equipment Calibration |
| 9.2 | Inspection Conditions |
| 9.3 | Sample Quantity And Description |
| 9.4 | Qualification Testing |
| 9.5 | Requalification Testing |

Latch-N-Lok

Marcomm Tools

Available on FCI

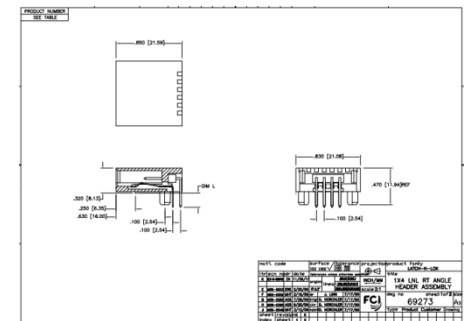
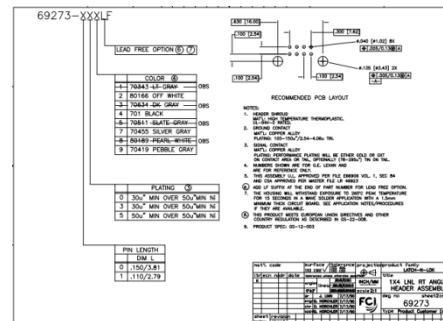


■ Part Numbers & Drawings

Start > Latch-N-Lok™ >

Only the first 220 best matching products out of 336 found products will be shown. Results 1 - 20 of 220. Result page: [1](#) [2](#) [3](#) [4](#) [5](#) [6](#) [7](#) [8](#) [9](#) [10](#) >>

Part Number	Image	Status	Product Name
69273-007		PRE-RELEASED	1x4 PCB Receptacle, Low Profile Right Angle, 3.81 mm (0.15 in.) Solder tail, Silver Gray
69273-102		ACTIVE	1x4 PCB Receptacle, Low Profile Right Angle, 2.79 mm (0.11 in.) Solder tail, Off White
69273-102LF		ACTIVE	1x4 PCB Receptacle, Low Profile Right Angle, 2.79 mm (0.11 in.) Solder tail, Off White
69273-104LF		FCI-Supplier Reference	1x4 PCB Receptacle, Low Profile Right Angle, 2.79 mm (0.11 in.) Solder tail, Black
69273-107		PRE-RELEASED	1x4 PCB Receptacle, Low Profile Right Angle, 2.79 mm (0.11 in.) Solder tail, Silver Gray
69273-109		PRE-RELEASED	1x4 PCB Receptacle, Low Profile Right Angle, 2.79 mm (0.11 in.) Solder tail, Pebble Gray
69901-102		ACTIVE	2x8 PCB Receptacle, Right Angle, 3.3 mm (0.13 in.) Solder tail, Off White





THANK YOU

