



BarGuide[®] Power Connectors

Busbar and Circuit Board Series

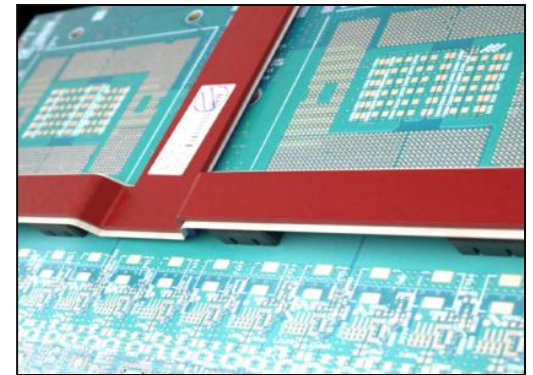
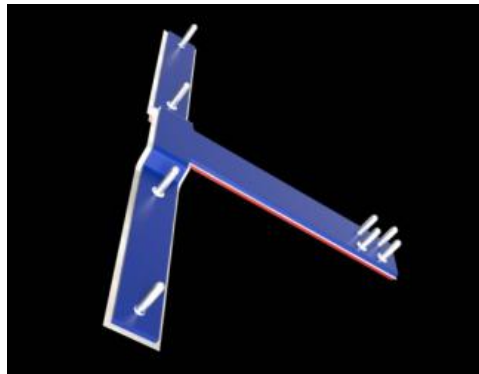
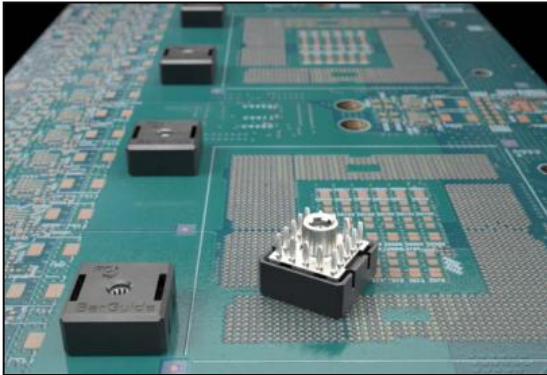
Product Presentation



Amphenol
FCi

What is it?

- BarGuide® connectors provide a high current power interconnection with quick connect/disconnect function for space constrained board to board, board-to-busbar and busbar-to-busbar power distribution applications. These connectors use a high performance multi-fingered spring which provides a large surface contact area, thus ensuring small voltage loss, minimum heat generation, and low insertion and extraction forces.
- BarGuide® connectors are available with press-fit PCB tails for mounting on both circuit boards and busbars. Available in 3.0mm and 6.0mm diameter pins. The connectors provide a wide current carrying capacity from 65 to 140Amps, based on specific pin size. Vertical design are available for parallel/mezzanine applications.



Advantages of BarGuide

Solid body

- Increases strength
- Absorbs heat
- Reduces resistance

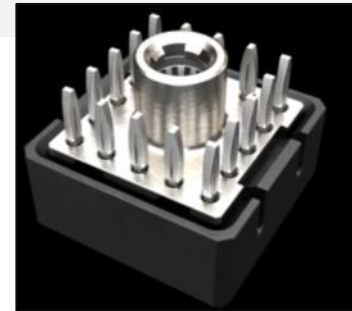
Compliant press-fit

- Eliminates soldering

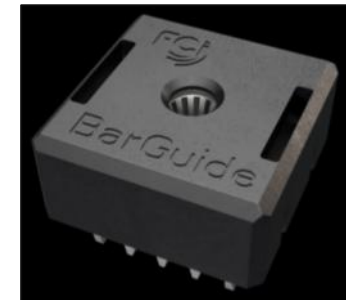
Top, Bottom and Side Entry

- To serve a variety of applications

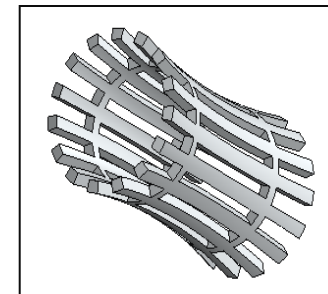
Highly conductive, Low resistance springs



Bottom Entry



Top Entry



Features	Benefits
<ul style="list-style-type: none">▪ High performance spring and silver plating	<ul style="list-style-type: none">▪ Low resistance, low voltage drop
<ul style="list-style-type: none">▪ Two Pin sizes: 3.0 and 6.0mm diameter	<ul style="list-style-type: none">▪ Current carrying range delivering 65Amps to 140Amps
<ul style="list-style-type: none">▪ Compliant press-fit tails	<ul style="list-style-type: none">▪ Convenient to mount on circuit boards or busbars
<ul style="list-style-type: none">▪ Wide operating temperature range from -40°C to +125°	<ul style="list-style-type: none">▪ Adaptable to extreme environment
<ul style="list-style-type: none">▪ Halogen-free resin	<ul style="list-style-type: none">▪ Meets next generation environmental requirements
<ul style="list-style-type: none">▪ Low mating force	<ul style="list-style-type: none">▪ Reduced plating wear high durability cycles

Target Markets/Typical Applications

Communications

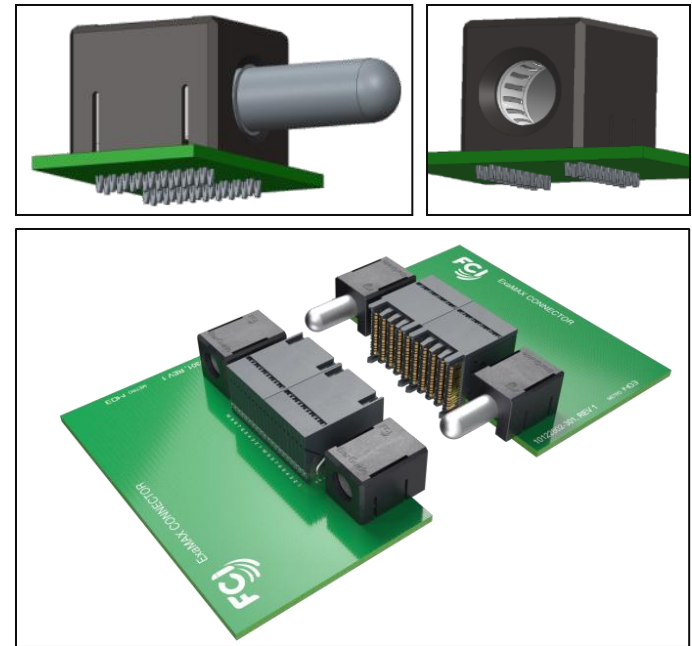
- AC/DC pluggable power supplies in Telecom and Datacom
- Network Equipment
- Switches

Data

- Servers
- Storage
- Industrial and Instrumentation

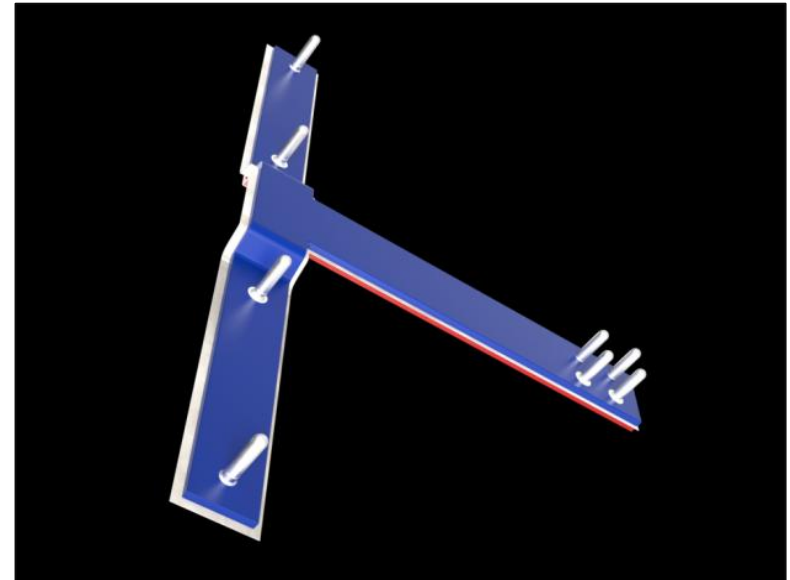
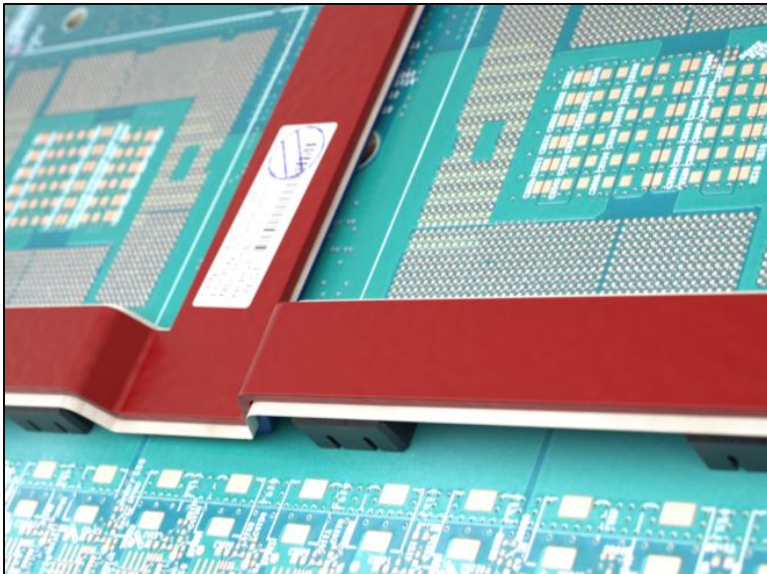
Serves as system guide pin and power connector

- Replaces 2 separate components



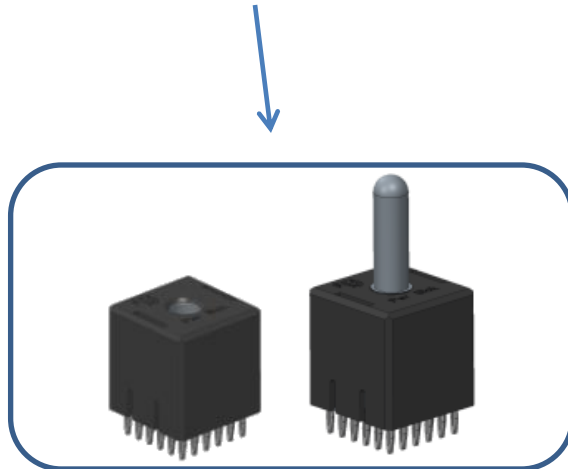
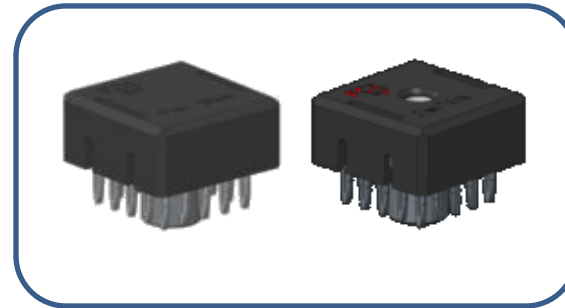
Busbar-to-PCB Power Distribution

- Increase electrical and space efficiency
- Eliminate hot spots caused with power planes
- Carry the power on the busbar not the PCB
- Reduce costs with fewer layers on the PCB



PCB/Busbar Plugs and Receptacles (CBS Series)

- Press-Fit connections to PCB or Busbar
- Provides Guidance and Power
 - 3.0mm – 65 Amps
 - 6.0mm – 140 Amps



ELECTRICAL PERFORMANCE

Series	Pin Diameter	Current Rating	Contact Resistance
CBS	3.0mm	65A	1.0mΩ
CBS	6.0mm	140A	0.4mΩ

MECHANICAL PERFORMANCE

- Durability: 200 mating cycles

ENVIRONMENTAL

- Operating Temperature: -40°C to +125°C

Part Numbers

Description	Part Numbers
CBS 3.0mm vertical plug*	10136378-001LF
CBS 3.0mm vertical receptacle*	10132198-001LF
CBS 6.0mm vertical plug*	10132094-001LF
CBS 6.0mm vertical receptacle*	10132093-001LF

*UL Recognized



THANK YOU

Amphenol
FCi