

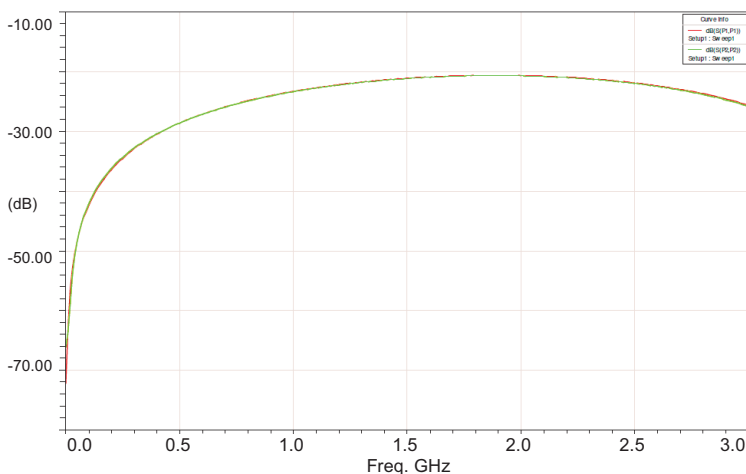
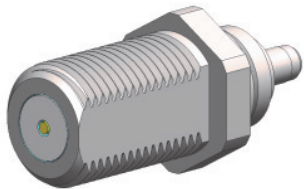
DOCSIS 3.0 RF Solutions

Type-F Bulkhead Connector

for Cable Applications using RG179 to RG6



Part No.	Cable Style
A30J1BK-201-10N	RG179 & Belden 179DT
A30J1BK-205-10N	Double Shielded RG179



FCT Electronics has introduced a new Type -F Bulkhead connector for use in Cable Headend infrastructure in support of new DOCSIS 3.0 system performance requirements.

Mechanically, the connector can be successfully mated and unmated multiple times with cables having significant conductor size differences without degradation in performance.

This gives system providers a huge confidence in mechanical product integrity when faced with end customer mating alternatives of Type-F plugs on RG179 or RG6 cable.

The mating face is fully compliant with SCTE specifications and the body has a single D feature for alignment and anti-rotation.

The electrical performance of the new Type-F Connector has been optimized by FCT's RF Design Engineers using Ansoft's HFSS suite of software.

Return Loss is better than 20dB through 3GHz

VSWR <1.15:1 through 1GHz
VSWR <1.21:1 through 3GHz

FCT Electronics has been a leading supplier to manufacturers of Cable TV Infrastructure in the fields of Coaxial and Power Interconnect Solutions for more than 10 years and has excelled in performance since the introduction of higher digital performance requirements.