



弹簧探针产品组合

FEINMETALL
Contact Technologies



您在触探科技领域的合作伙伴



是什么让我们与众不同？

FEINMETALL是一个独立的，中等规模，具有较高的创新能力的公司。

大约有400多名员工各尽其能使我们的客户成功的使用我们的产品。这是我们的目标和我们的动力。

我们的专长

- 专业于触探科技领域
- 精密机械和微精密机械的最高水平
- 多样性和创新性
- 高品质国际服务和以客户为中心
- 质量和交货的可靠性

弹簧探针产品组合

弹簧探针用于线路板测试(ICT/FCT)

弹簧探针用于信号和电流传输

弹簧探针用于线束及连接器测试

弹簧探针用于大电流

弹簧探针用于开尔文和高频测试





英寸尺寸的探针

- 标准类型: F040 (40mil) / F050 (50mil) / F075, F703 (75mil) / F100, F585 (100mil)
- 长行程类型: F051 (50mil) / F793 (75mil) / F588 (100mil)
- 短类型: F111, F112 (50mil) / F561, F701 (75mil) / F562 (100mil)

在坚固部件的公制尺寸的探针

- 标准类型: F772 (100mil) / F773 (138mil)
- 长行程类型: F786 (100mil) / F796, F785 (138mil)
- 短类型: F563, F564 (125mil) / F566 (187mil)



微间距探针

- 单头: F239 (20mil) / F207 (28mil) / F109 (39mil)
- 双头: F238, F681 (20mil) / F206, F209 (28mil) / F680, F685 (30mil) / F252 (39mil)

在特殊条件的触探

渐进式系列专门用于触探无铅焊接的电路板

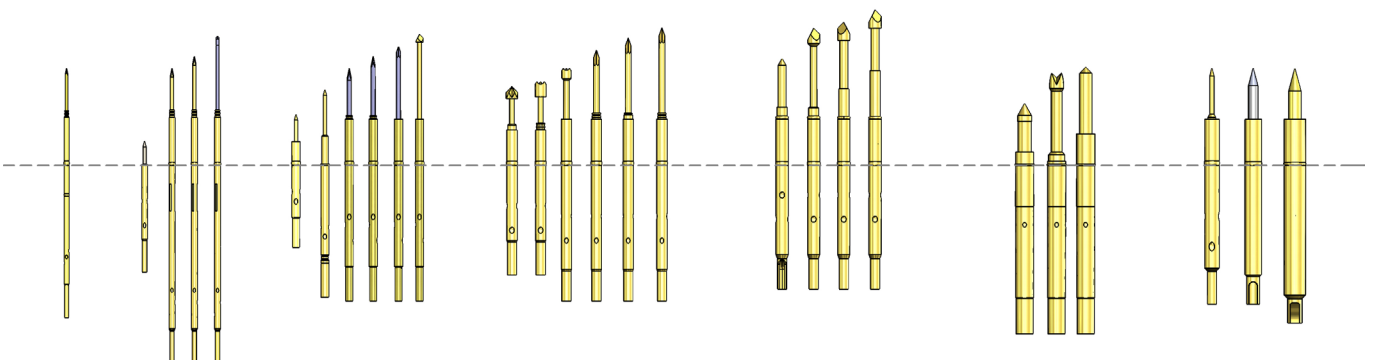
F050...HP, F051...P..., (50mil) / F075...HP, F793...HP (75mil) / F563...HP, F100...HP, F588...HP, F772...HP (100mil)

触探OSP镀层线路板的解决方案

F07532S064P250HP, F07532S064P250HPL (75mil) / F10032S090P300HP, F10032S090P300HPL (100mil)

„摇摆杆“用于强侧向力

F075...RP (75mil) / F100...RP, F732...RP (100mil)



弹簧探针用于信号和电流传输



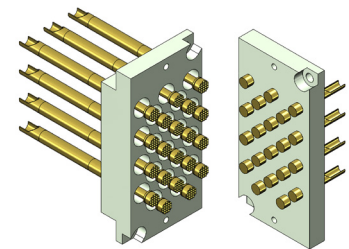
界面探针用于通用的测试系统

ATG Luther & Maelzer:	F262..., F282..., F502...
Teradyne:	F15030B100G100...
Teradyne Spectrum 885x:	F10015B150G200
Genrad 227x/228x:	F50403B104G130, F50418B105G100L, F50430B105G100L
Digitaltest MTS 300:	F53807S130N220, F53807S190N220
Spea (Easytest/Unitest):	F10005B150G200, F10006B150G200
Agilent HP3070 / i5000:	F10006B310.... „Mint-Pin“
Flying Probe Testsysteme:	FP73218S100L150E19
Testjet:	Z58550B175G100S1, Z58850B175G180S1



界面针

带有绕线柱:	I-Z1, I-G1, G-G1S1, I-G1S2, I-C22WW/2, I-D2WW/2
带有圆形柱:	I-G1S3, I-P18WR/0.8, I-Z1WR/0.8, I-Z1S2, I-D19S1/2
带有焊接结尾:	I-C18LA/3, I-C17LA/2, I-D17LA/2
用于大电流:	I-P16LA/0.9, I-P20LA/2.5, I-P1, I-P1S2, I-P1S3, I-P1S4

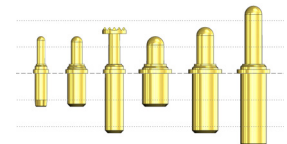


界面针模块

测试头
 界面针模块用于测试系统和测试夹具
 客户预定义的模块

电池触探

可插式:	F697 (50mil) / F709 (67mil) / F708, F704 (87mil) / F706, F702, F705 (118mil) F671, F672, F673
螺纹式:	F360C (157mil)



短行程探针

有针套:	F605, F665 (50 mil) / F670 (100 mil) / F713 (177 mil) / F650, F651 (256 mil)
无针套:	F693, F620, F699, F630, F692, F192 (100 mil)

电池触探和短行程探针可以适用于带子上。





开关探针

- 关闭 (NO) 可插式: F864 (75mil) / F878 (100mil) / F884 (138mil)
- 关闭 (NO) 螺纹式: F863 (75mil) / F865, F879, F873, F875, F375 (100mil) / F885, F886, F385 (138mil) / F887 (157mil) / F419 (256mil)
- 开启 (NO) 螺纹式: F873 (100mil) / F883 (138mil)
- 关闭 (NO) 从后面安装: F880 (138mil)
- 关闭 (NO) 零电位: F881 (138mil)
- 关闭 (NO) 球探针: F888 (256 - 354mil)
- 开关探针有关-开-关原理: F487 (157mil)

盘式探针

(中心取决于盘的直径)

- 可插式: F086...SP / F100...SP / F773...SP
- 螺纹式: F730...SP / F731...SP / F732...SP / F733...SP



定向式探针

- 可插式: F752 (100mil) / F754 (177mil)
- 螺纹式: F751 (87mil) / F756 (100mil) / F760 (138mil) / F755 (177mil)

推回探针

- 可插式, 不定向: V03 (118mil) / V04 (157mil)
- 螺纹式, 定向: VF100 (100mil) / VF3 (118mil) / VF4 (157mil)

螺纹探针

- 标准类型: F730 (50mil) / F731 (87mil) / F732 (100mil) / F733 (157mil)
- 长行程类型: F175 (75mil) / F727 (100mil) / F734, F737 (157mil)
- 短类型: F176 (87mil) / F722 (100mil) / F723 (157mil)



位置传感器系统

探针有集成位移测量。整个模块由探针, 组装针套和位置传感器-此外还可提供定向式探针

弹簧探针用于高电流



整杆式高电流探针

可插式: F310 (59mil) / F320 (67mil) /
F330 (100mil) / F340 (157mil)

分体杆式高电流探针

可插式: F772...C (100mil) / F773...C (138mil) /
F775...C (197mi)
螺纹式: F732...C (100mil) / F723...C, F733...C (157mil) /
F735...C (197mi)

银头高电流探针预防触点烧损

可插式: F772...C (100mil) / F773...C (138mil) /
F775...C (197mi)
螺纹式: F732...C (100mil) / F723...C, F733...C (157mil) /
F735...C (197mi)

触片触探

螺纹式: F762...C (157mil)

触探模块用于不平表面的触探

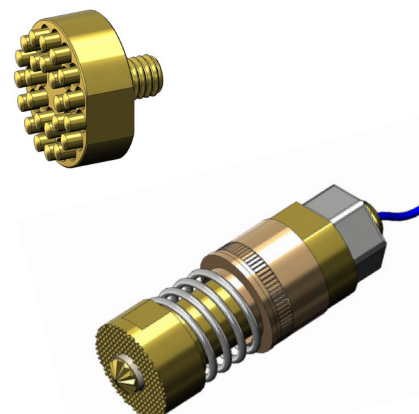
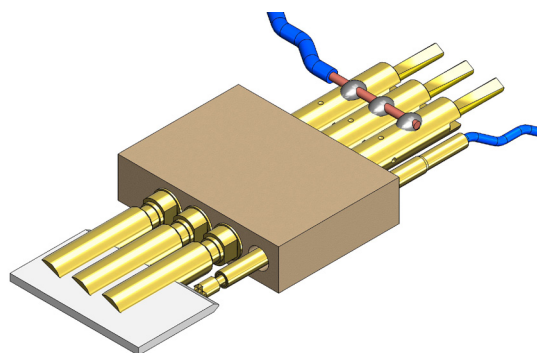
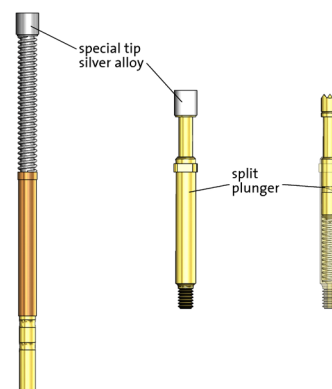
安装在导电材料: 1860C001, 1860C002, 1860C006 (472mil)

结构坚固的高电流探针

螺纹式: 1860C005 (433mil)

高电流同轴探针用于触探蓄电池组电池

高电流同轴探针: 1860C003, 1860C007 (551mil),
1860C004 (984mil)





同轴探针用于高频测试

SMA (母): HF86002B0001G530 - 8GHz (256mil)



SMB (公): HF86005B0004G530 - 5GHz (236mil)



SMB (母): HF86002B0005G530 - 6GHz (236mil)



SMC (公): HF86005B0003G530 - 5GHz (236mil)



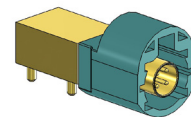
U.FI (公): HF86005B0002G530 - 5GHz (236mil)



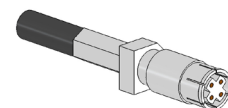
RF (公): HF86005B0007G530 - 5GHz (236mil)



HSD (公): HF81905B0001G1270 - 2GHz (472mil)



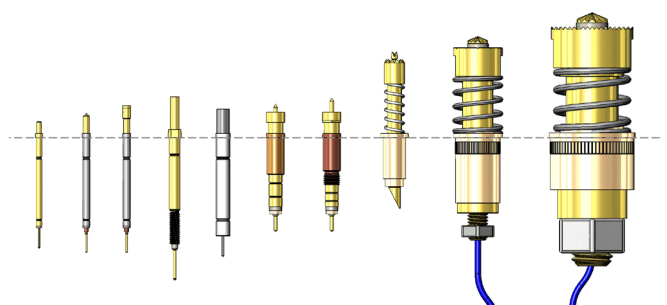
HSD (母): HF81912B0002G1270 - 2GHz (472mil)



同轴探针用于四极测试(开尔文测试)

可插式: F805 (87mil) / F810 (100mil) / F830 (157mil) / F822 (216mil) / F840 (275mil) / 1860C007 (551mil) / 1860C004 (984mil)

螺纹式: F835 (138mil) / F832 (216mil)



全球为您定位



- FM Subsidiaries
- Representations

-  FEINMETALL GMBH | HERRENBERG, GERMANY
(+49) 7032 2001-0 | info@feinmetall.com
-  FEINMETALL DE MEXICO | MEXICO
(+52) 55 2591 0629 | info.mexico@feinmetall.com
-  FEINMETALL SINGAPORE PTE LTD | SINGAPORE
(+65) 6316 4544 | info@sg.feinmetall.com
-  FEINMETALL-OCT | HSINCHU COUNTY, TAIWAN
(+886) 3 560 15 66 | info@tw.feinmetall.com
-  FEINMETALL SHANGHAI | CHINA
(+86) 21 2898 6848 | info@cn.feinmetall.com
-  FEINMETALL USA LLC | SAN JOSE, USA
(+1) 408 432 7500 | info.us@feinmetall.com



FEINMETALL
Contact Technologies

www.feinmetall.com/cn/

