

# PRODUCT PORTFOLIO CONTACT PROBES FOR RADIO FREQUENCY MEASUREMENTS



# COAXIAL PROBES FOR RADIO FREQUENCY MEASUREMENTS



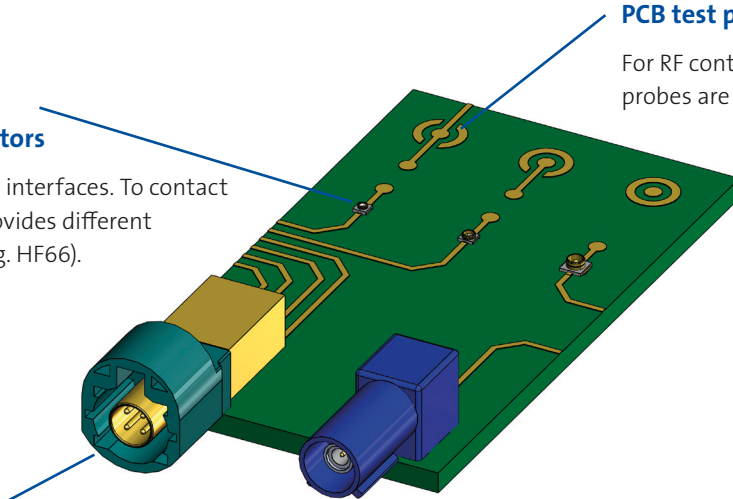
FEINMETALL offers sophisticated contact solutions for various industries and applications. Coaxial probes cover a wide range of radio frequency applications like contacting standard RF connectors, switch connectors or RF test points on the PCB.

## SMD mini coax and SMD switch connectors

be used on PCBs as RF interfaces. To contact these FEINMETALL provides different types of RF probes (e.g. HF66).

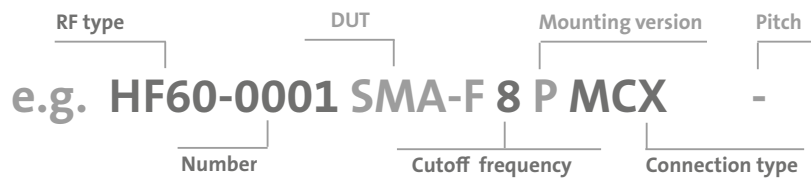
## PCB test points

For RF contacts directly on the PCB special RF probes are available. The probe design of these probes (e.g. HF05, HF60) is adapted to the typical requirements of the test points.

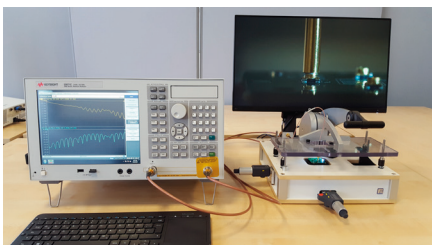


## Connectors

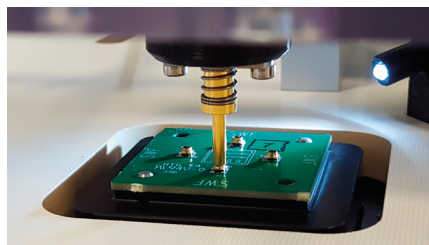
In various telecommunications, consumer electronics and automotive applications different standard connectors like SMA, SMB, SMC, HSD are used. FEINMETALL offers different probe series for contacting these connectors (e.g. HF60, HF19, HF66).



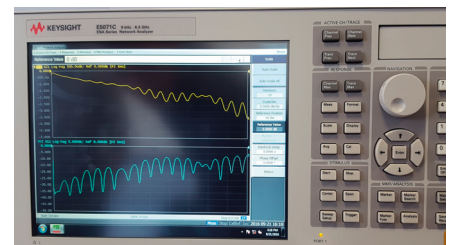
RF test set-up



Contacting RF connector





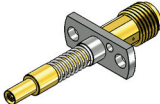



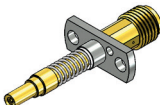

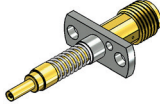
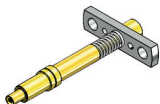

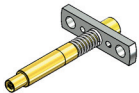
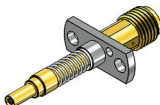
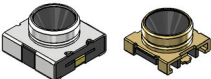
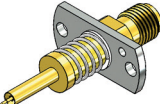
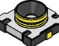
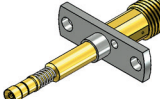
RF monitoring



# COAXIAL PROBES FOR RADIO FREQUENCY MEASUREMENTS



## Coaxial probe HF66 up to 6 GHz

<b>HSC (Male):</b>			HF66-0006 HSC 6 S M-SMP
			HF66-0008 HSC 6 F SMA
<b>JSC (Male):</b>			HF66-0002 JSC 6 S M-SMP
			HF66-0010 JSC 6 S M-SMP
			HF66-0012 JSC 6 F SMA
<b>KSC (Male):</b>			HF66-0003 KSC 6 F SMA
			HF66-0005 KSC 6 F M-SMP
<b>LSC (Male):</b>			HF66-0004 LSC 6 F M-SMP
			HF66-0011 LSC 6 F SMA
<b>SWD/SWF/SWG (Female):</b>			HF66-0013 SW-D/F/G 6 F SMA
<b>SWG (Female):</b>			HF66-0007 SWG 6 F SMA

# COAXIAL PROBES FOR RADIO FREQUENCY MEASUREMENTS



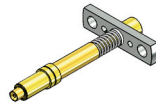
## Coaxial probe HF66 up to 6 GHz

SWH (Female):



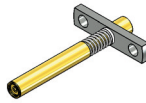
HF66-0009 SWH 6 S M-SMP

SWJ (Female):



HF66-0001 SWJ 6 F M-SMP

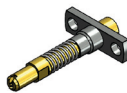
MHF/U.FL (Male):



HF66-0014 MHF/U.FL 6 F M-SMP

## Coaxial probe HF05 up to 6 GHz

PCB-GSG:



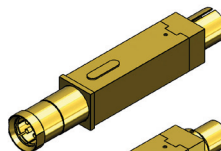
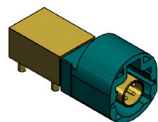
HF05-0001 GSG 6 F M-SMP 050



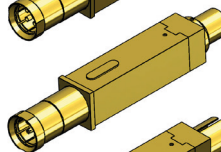
HF05-0002 GSG 6 F M-SMP 050

## Coaxial probe HF19 up to 3 GHz

HSD (Male):

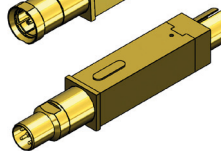
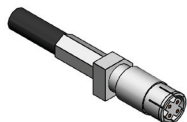


HF19-0001 HSD-M 2 P H819AE2/3



HF19-0003 HSD-M 3 P HSD

HSD (Female):



HF19-0002 HSD-F 2 P H819AE2/3



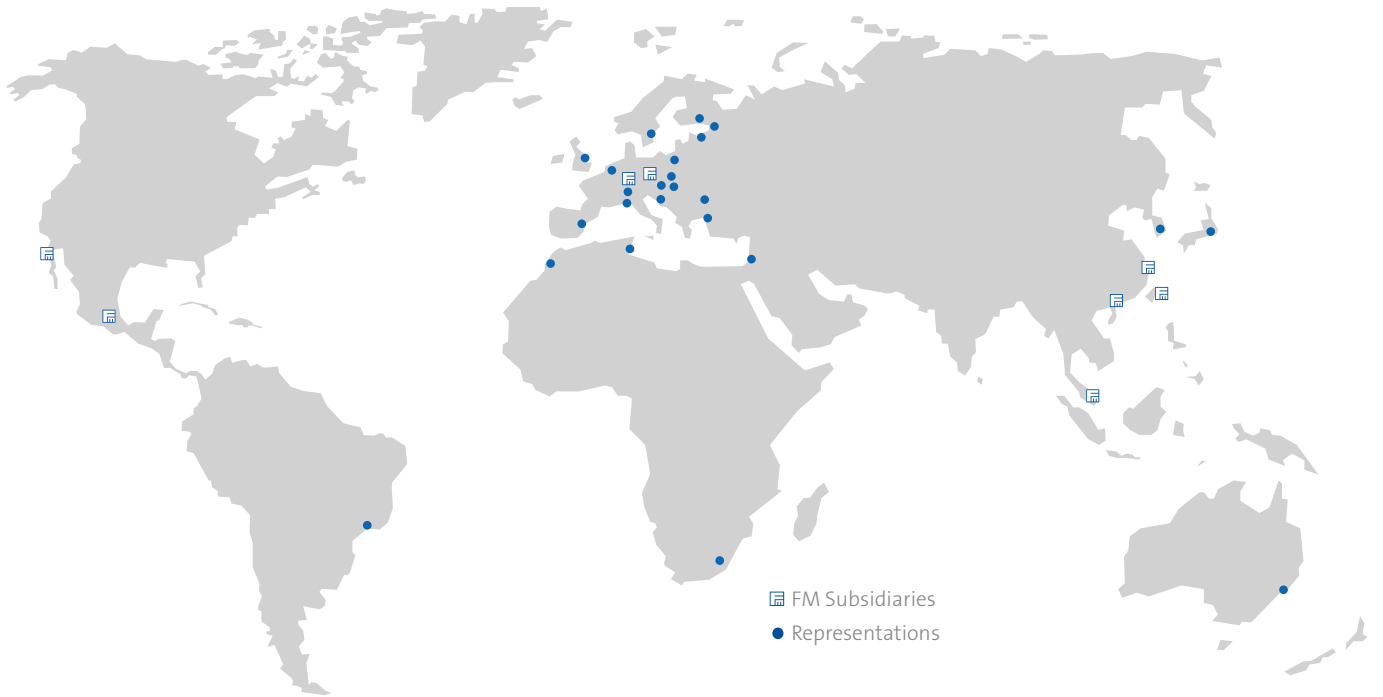
# COAXIAL PROBES FOR RADIO FREQUENCY MEASUREMENTS






## Coaxial probe HF60 up to 8 GHz


<b>Fakra (Male):</b>			HF60-0006 FAKRA-M 5 P MCX
<b>SMA (Female):</b>			HF60-0001 SMA-F 8 P MCX
<b>BMA (Male):</b>			HF60-0011 BMA-M 5 P MCX
<b>SMB (Male):</b>			HF60-0004 SMB-M 5 P MCX
<b>SMB (Female):</b>			HF60-0005 SMB-F 6 P MCX
<b>SMC (Male):</b>			HF60-0003 SMC-M 5 P MCX
<b>U.FL (Male):</b>			HF60-0002 U.FL-M 5 P MCX
<b>Micro RF (Male):</b>			HF60-0007 RF-M 5 P MCX
<b>PCB-coax-open:</b>			HF60-0008 PCB-coax-open 4 P MCX
<b>PCB-coax-open:</b>			HF60-0010 PCB-coax-open 4 P MCX
<b>PCB-GSG:</b>			HF60-0009 GSG 4 P MCX 135

# INTERNATIONALLY POSITIONED FOR YOU




 FM Subsidiaries  
 Representations


 FEINMETALL GMBH | HERRENBERG, GERMANY  
 (+49) 7032 2001-0 | [info@feinmetall.com](mailto:info@feinmetall.com)

 FEINMETALL DE MEXICO | MEXICO  
 (+52) 55 2591 0629 | [info.mexico@feinmetall.com](mailto:info.mexico@feinmetall.com)

 FEINMETALL SHANGHAI | CHINA  
 (+86) 21 2898 6848 | [info@cn.feinmetall.com](mailto:info@cn.feinmetall.com)

FEINMETALL-OCT | HSINCHU COUNTY, TAIWAN  
 (+886) 3 560 15 66 | [info@tw.feinmetall.com](mailto:info@tw.feinmetall.com)

 FEINMETALL CZ | CZECH REPUBLIC  
 (+42) 0491 470-511 | [info@cz.feinmetall.com](mailto:info@cz.feinmetall.com)

 FEINMETALL USA LLC | SAN JOSE, USA  
 (+1) 408 432 7500 | [info.us@feinmetall.com](mailto:info.us@feinmetall.com)

 FEINMETALL SINGAPORE PTE LTD | SINGAPORE  
 (+65) 6316 4544 | [info@sg.feinmetall.com](mailto:info@sg.feinmetall.com)

You have test demands with specific requirements and you need a tailor-made solution?

In our catalogues you find contact probes for:

- **Board test**
- **Wire harness test**
- **Limited space**
- **High current and coaxial applications**



Version 1



**FEINMETALL**  
 Contact Technologies

[www.feinmetall.com](http://www.feinmetall.com)

