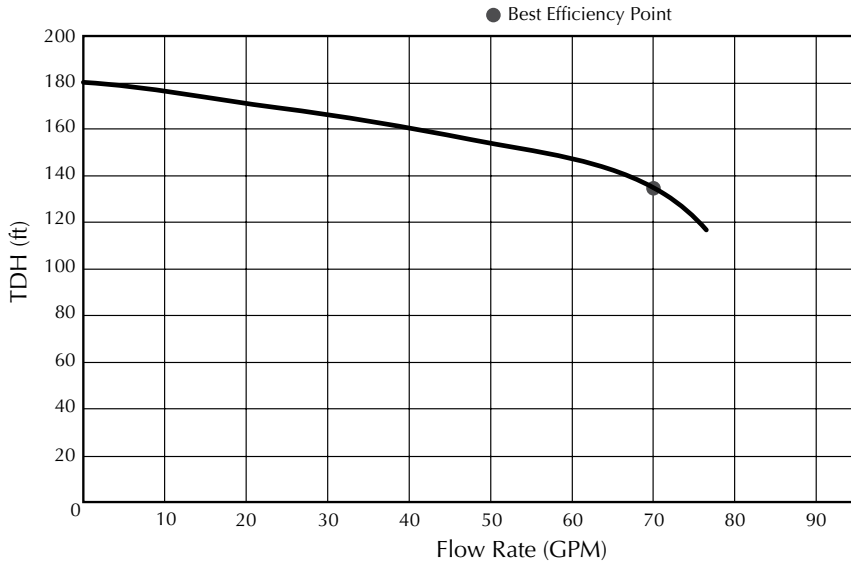


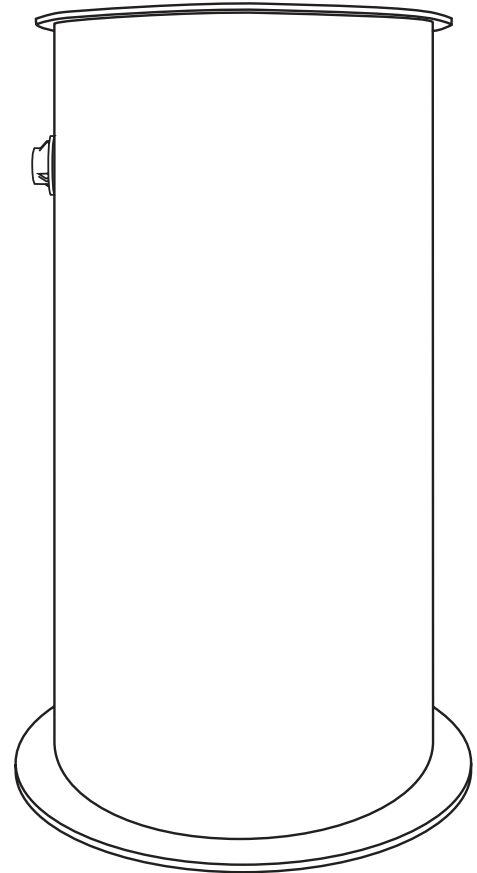
MODEL: P2D Series Duplex Fiberglass Basins



The curve reflects maximum performance characteristics without exceeding full load (Nameplate) horsepower. Operation is recommended near the Best Efficiency Point. Operating at the outer limits of the curve is not recommended. Performance curves are based on actual tests with clear water at 70° F. and 1280 feet site elevation.

Conditions of Service:

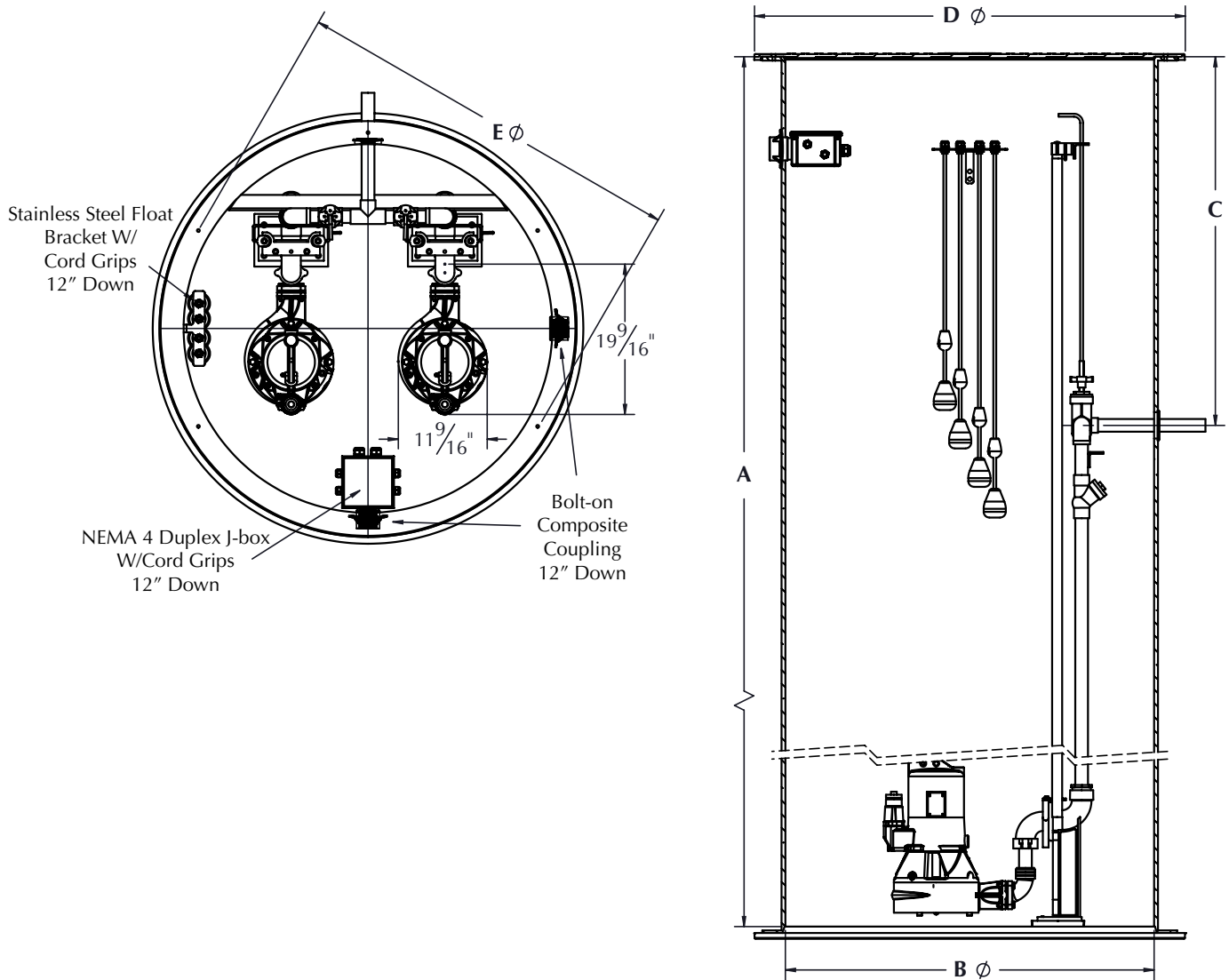
GPM: _____ TDH: _____



Duplex Basin Series	Applicable Pump Model
P2D-4884 P2D-4896 P2D-48120 P2D-48144	G7D-43

P2D Series Performance Data
Discharge: 1-1/4"

MODEL: P2D Series Duplex Fiberglass Basins



Model Number	Weight (lb)	A (in)	B (in)	C (in)	D (in)	E (in)
P2D-4884	600	84	48	48	54	51
P2D-4896	650	96				
P2D-48120	725	120				
P2D-48144	810	144				

Weight does not include pump or cable

A = Inside Depth; B = Inside Diameter; C = Center of Discharge Below Top Rim; D = Outside Diameter of Top Rim; E = Cover Bolt Circle Diameter

Component dimensions may vary $\pm 1/8$ inch. Dimensional data not for construction purpose unless certified.

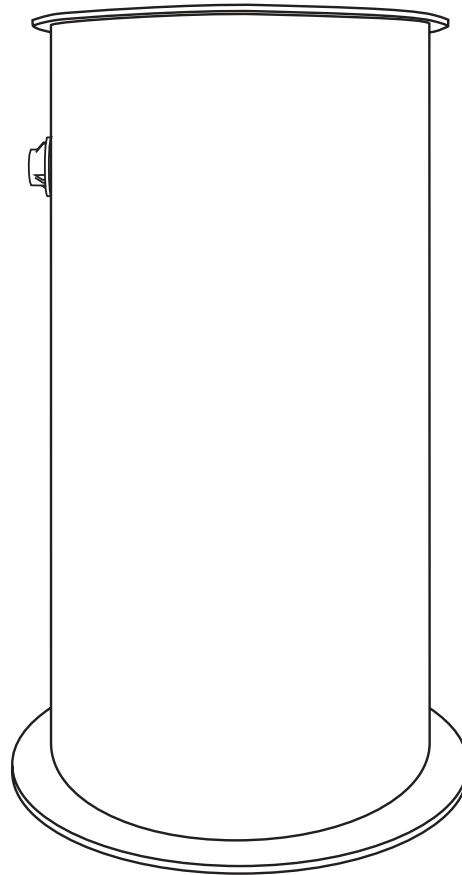
Dimensions and weights are approximate. Float switches and control boxes ordered separately with pump. We reserve the right to make revisions to our product (s) and the product (s) specifications without notice.

P2D Series Dimensional Data
Discharge: 1-1/4"

MODEL: P2D Series Duplex Fiberglass Basins

	P2D-4884	P2D-4896	P2D-48120	P2D-48144
Tank	Wound fiberglass with integral anti-flotation flange. Fiberglass cover standard.			
Useable Basin Volume* (gal)	368	420	525	630
Guide Rail	Stainless Steel			
Guide Rail Base / Disconnect	Cast Iron			
Inlet Hub	4" with flange gasket and pipe seal			
Discharge Piping	1-1/4" Schedule 80 PVC			
Control Panel	Supplied separately			
Float Switch	Supplied separately, (4) maximum			
Max Liquid Temperature	140° F/ 60° C			
Hardware	Stainless Steel			

* 55% of total basin volume - actual volume determined by field location of inlet



P2D Series Technical Data
Discharge: 1-1/4"

Wholesale Products Page: **JP10088SSD-3**
Section: **Technical Data**
Dated: **January, 2011**



MODEL: P2D Series Duplex Fiberglass Basins

1.01 General

Contractor shall furnish all labor, materials, equipment and incidentals required to install (Qty.) sewage basin(s) as specified herein. The basin models covered in this specification are the P2D Series. Pumps used with this basin are manufactured by Jung Pumpen of Delavan, Wisconsin (800-642-5930).

2.01 Design Conditions

Each basin shall be _____ inches high, _____ inches inside diameter, _____ inches down from top of basin to center of discharge piping. Fiberglass cover standard.

Optional Cover: _____ Stainless Steel _____ Aluminum
Optional Control _____ Simplex _____ Duplex
 _____ Outdoor Panel _____ Indoor Panel
Optional Alarm _____ None _____ Outdoor _____ Indoor

3.01 Construction

Each basin shall incorporate features normally found in basins furnished for the heavy duty industrial or municipal markets. These features include:

- 3.02 Factory mounted guide rail system with means to suspend pump using bolt-on quick disconnect.
- 3.03 Discharge piping shall be schedule 80 PVC and furnished with a PVC or cast iron check valve and a PVC or cast iron gate valve.
- 3.04 The tank shall be chop-hoop filament wound fiberglass and will incorporate an integral anti-flotation collar.
- 3.05 The tank will be supplied with a 4" inlet hub shipped loose. Additional or different size inlet hubs shall be optionally available.
- 3.06 All metal components exposed to the pumped liquid shall be 300 series stainless steel or brass.

4.01 Seals

Seal material will be nitrile or Buna N.

5.01 Testing

All basins shall be individually tested to include the following:

- 5.02 The tank and cover shall be visually inspected for imperfections, cracks, gouges, or delamination.
- 5.03 The tank shall successfully pass leak testing.

6.01 Warranty

Standard warranty shall be 12 months from date of installation or 18 months from date of manufacture. Warranty repairs shall be provided by an authorized service station.