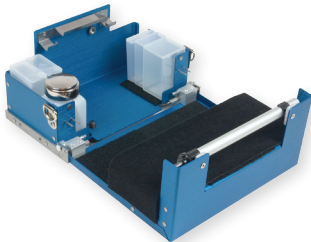


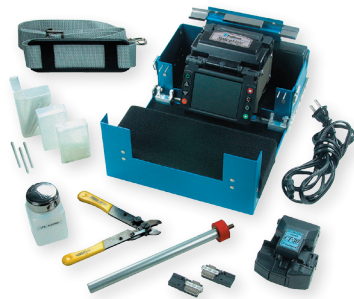


### SpliceMate™ FSM-11R D900 Fusion Splicer

The SpliceMate D900 has a unique design that is ideally suited for tactical fiber optic cable assembly (TFOCA) repair needs. The D900 is the industry-standard for simultaneously splicing two 900µm jacketed optical fibers. Its user-friendly graphical interface and automated features make it suitable for those with limited splicing experience.



Portable Workstation



SpliceMate shown with Portable Workstation

#### Features

- Optimized for dual-fiber splicing for TFOCA cable applications
- Extremely lightweight – less than two pounds
- Small package design – four inch by three inch footprint
- Automatic arc calibration – minimizes maintenance requirements
- Dual camera inspection – minimizes splice loss
- Dual direction monitor – provides viewing versatility
- 30 mph wind protector – expands field applications

#### Specifications

PARAMETER	VALUE
Model	FSM-11R D900 Fusion Splicer
Applicable Fibers	SMF, MMF, NZ-DSF, DSF
Cladding Diameter	125µm
Typical Average Splice Loss	SMF = 0.05dB / MMF = 0.02dB
Splicing Time	20 seconds
Arc Calibration Method	Automatic and manual methods
Splicing Modes	Auto / SM / MM / NZ / DS
Splice Loss Estimate	Based on dual camera inspection
Monitor	3.5" LCD, adjustable monitor angle (front or top selectable)
Tube Heating Time	40 seconds
Number of Splice / Heat with Battery	30
Power Supply	AC, DC, Battery
Terminals	USB
Wind Protection	30 mph
Dimensions	110W x 80D x 100H (mm) / 4.33W x 3.14D x 3.94H (inches)
Weight with Battery	0.80kg / 1.76 lbs.

#### Ordering Information

DESCRIPTION	PART NUMBER
FSM-11R D900 Fusion Splicer	S014112
FSM-11R D900 Fusion Splicer Kit	S014116

**SpliceMate™**  
HANDHELD FUSION SPLICER

## SpliceMate™ FSM-11R D900 Fusion Splicer

### Ordering Information

DESCRIPTION	ITEMS INCLUDED	AFL NO.
FSM-11R D900 Fusion Splicer	<ul style="list-style-type: none"> <li>- FSM-11R D900 Fusion Splicer</li> <li>- FH-50-D900 Fiber Holders (Dual 900µm Fiber)</li> <li>- BTC-04 Battery Charger</li> <li>- BTR-07 Battery</li> <li>- Spare Electrodes (Pair)</li> <li>- Operation Manual</li> <li>- Transit Case</li> </ul>	S014112
FSM-11R D900 Fusion Splicer Kit	<ul style="list-style-type: none"> <li>- FSM-11R D900 Fusion Splicer</li> <li>- FH-50-D900 Fiber Holders (Dual 900µm Fiber)</li> <li>- BTC-04 Battery Charger</li> <li>- BTR-07 Battery</li> <li>- Spare Electrodes (Pair)</li> <li>- Operation Manual</li> <li>- Transit Case</li> <li>- CT-30 Cleaver</li> <li>- HJS-03-D900 Battery Powered Hot Jacket Stripper</li> </ul>	S014116

### Accessories & Supplies

DESCRIPTION	AFL NO.
<b>Cleavers</b>	
CT-30 Cleaver	S014076
FC-02 Fiber Collector	S014092
FDB-02 Fiber Collector Scrap Box	S014104
FDB-03 Large Fiber Collector Scrap Box	S014483
<b>Batteries and Power Cords</b>	
BTC-04 Battery Charger for SpliceMate (charges BTR-07)	S014000
BTR-07 Battery for SpliceMate	S014004
ACC-09 Power Cord (for ADC-10)	S014390
DCA-02 DC Adaptor for SpliceMate (needed for AC operation)	S014008
ADC-10 AC Adapter (for BTC-04)	S012548
<b>Miscellaneous</b>	
FH-50-D900 Fiber Holders (dual 900µm fibers)	S014321
FP-D900 (40) Dual Splice Sleeve	S014413
SpliceMate Portable Workstation	S014052
NID Mounting Kit	S014108
HJS-03-D900 Battery Powered Hot Jacket Stripper	S014427
LC-01 Leather Case for SpliceMate	S014024
Electrodes: FSM-11R	S014028