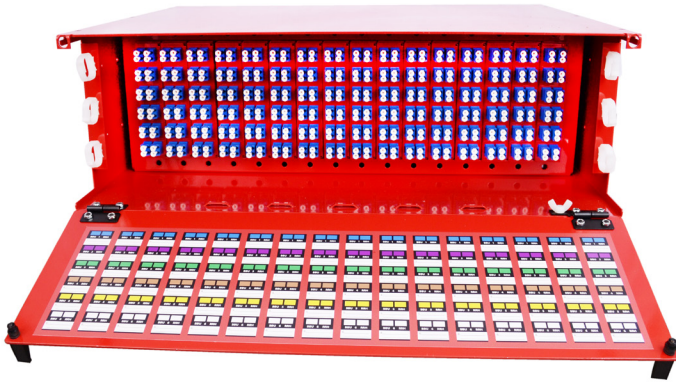


# 4RU HIGH DENSITY CPRI INTERFACE PANEL, 23"



Part #: CPRI4RU23VZW

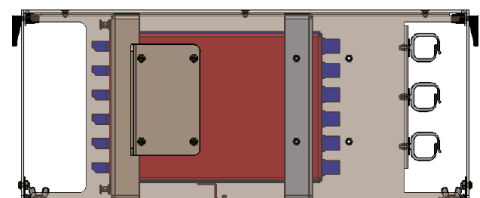
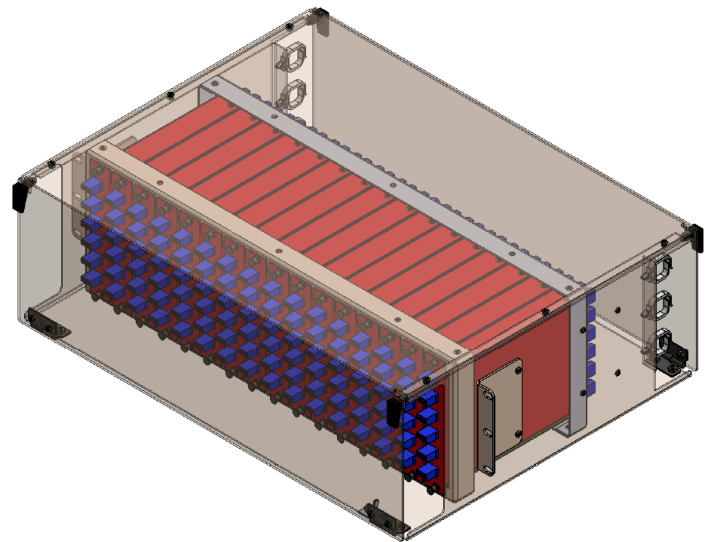
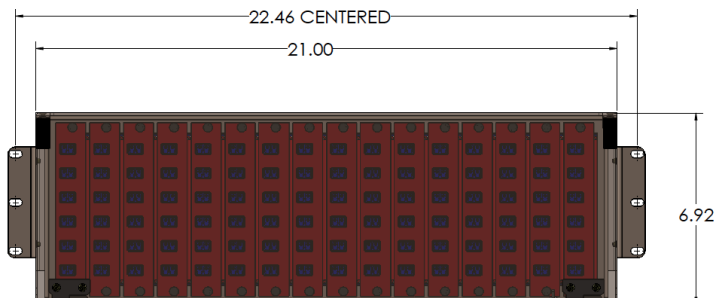
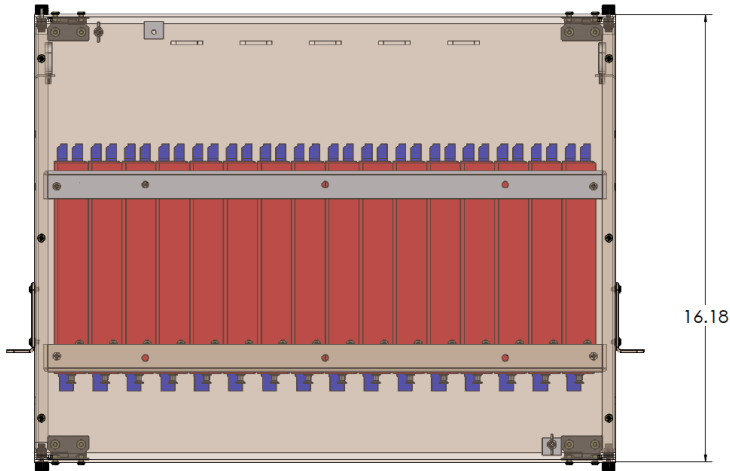
## FEATURES

- Up to (288) LC/UPC, SM, Duplex Adapters, Color Coded
- Up to (96) CPRI Link Monitor Ports
- Front or Rear Access to Monitor Ports
- Accommodates 23" Open Frame Racks
- Manufactured in the USA

This 23" Wide 4RU High Density CPRI interface panel has capacity for up to (16) Mini CPRI interface modules. This CPRI IP provides test access for up to (96) active CPRI links when loaded with (16) Mini CPRI interface modules. Once loaded with CPRI modules, fibers from the BBH and RRH are routed into the back of the unit and monitoring access is located in the front of the chassis. Cable management rings and tie downs are integrated to organize incoming fibers within the back of the chassis.

The chassis features reversible mounting positions to access monitor ports on the front or rear of the rack. Color coded port maps are located on the inside of the front and back doors to provide guidance during installation, and act as a reference once monitoring. Uplink and Downlink monitor ports are also mapped out on the modules and indicate where to insert CPRI protocol analyzers during testing.

## TECH DRAWING



# 4RU HIGH DENSITY CPRI INTERFACE PANEL, 23"



## SPECIFICATIONS

Dimensions	4RU Chassis: 16.18"L x 19"W x 6.92"H
Weight	Chassis with 16 Modules: 24.4 Lbs
Material	4RU Chassis and Mini CPRI Module: .064" Aluminum
Coating	Electro Statically Applied Red Powder Coat
Connector Style (Per Module)	LC/UPC Duplex LC Bulkheads; QTY 18; Color Coded (Blue, Violet, Green, Brown, Yellow, White)
Module Couplers	1x2; 50:50 Split; 9/125um; QTY 12 Tx Directional; 3.8dB Typical Loss, CWDM Compatible
Operating and Storage Temperature	-40 ~ +85 Celsius
Operating and Storage Humidity	5 ~ 95 %RH
Power Requirements	Passive Module, No Power Required

## ORDERING INFORMATION

CPRI4RU23VZW	23" CPRI 4RU CPRI IP Chassis, Holds (16) Mini CPRI Modules
CPRI6RRHSPM	Mini CPRI Module, Supports (6) CPRI Links
4RUBLANK	Cover Plate for Empty 4RU Module Slot
4RUMODADPT	Adapter Plate For Mini CPRI Module to Mount Within 4RU Chassis