



8-BOLT, 8.00" BOLT CIRCLE, 6.00" PILOT

	458	458S	458SB	778	813SB	508S
CAPACITY LB.	4,500	4,500	4,500	4,910	4,910	5,000
INNER CONE	603049LM	603049LM	603049LM	25590	25590	104948JLM
INNER CUP	603011LM	603011LM	603011LM	25520	25520	104910JLM
OUTER CONE	67048LM	67048LM	67048LM	25877	25877	501349LM
OUTER CUP	67010LM	67010LM	67010LM	25821	25821	501310LM
BOLT	B1013538	N/A	N/A	B1013538	N/A	N/A
STUD	N/A	S1013556	S1013556	N/A	S1013548	S1012912
NUT	N/A	N1013557	N1013557	N/A	N1013549	N1053017
SEAL	SE1006297	SE1006297	SE1006297	SE1006285	SE1006285	SE1046492
GASKET	N/A	N/A	N/A	N/A	N/A	N/A
SLEEVE (Opt)	N/A	N/A	N/A	N/A	N/A	N/A
DUST CAP	C1009905	C1009905	C1009905	C1009982	C1009982	C1009912
DIMENSION A	2.834	2.834	2.834	2.501	2.501	2.711
DIMENSION B	1.261	1.261	1.261	1.753	1.753	1.213
DIMENSION C	0.972	0.972	0.972	1.134	1.134	1.372
DIMENSION D	1.382	1.382	1.382	0.883	0.883	1.423
SPINDLE # 1	SP1081306	SP1081306	SP1081306	SP1080744C	SP1080744C	SP1086048
SPINDLE # 1 (In)	2.250 x 14.000	2.250 x 14.000	2.250 x 14.000	2.125 x 15.437	2.250 x 15.437	2.500 x 12.500
SPINDLE # 2	CUST. SPEC.	CUST. SPEC.	CUST. SPEC.	CUST. SPEC.	CUST. SPEC.	CUST. SPEC.
SPINDLE # 2 (In)	CUST. SPEC.	CUST. SPEC.	CUST. SPEC.	CUST. SPEC.	CUST. SPEC.	CUST. SPEC.

**HUB CAPACITIES BASED ON THE FOLLOWING OFFSETS:
 458, 458S, 458SB - 1.12" POSITIVE; 778, 813SB - 1.50" NEGATIVE; 508S - 0.38" POSITIVE**

HUB STYLE DESIGNATION

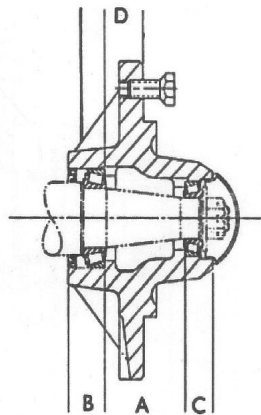
(S) Stud Bolt Version
 (B) Brake Version
 (H) Heavy Duty

OPTIONAL COMPONENTS

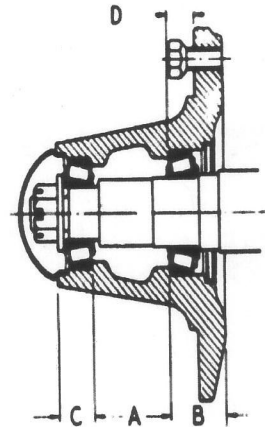
Gasket
 Wear Sleeve
 Grease Zerk



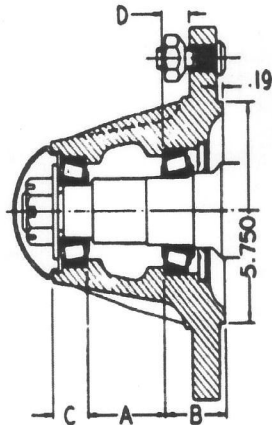
8-BOLT, 8.00" BOLT CIRCLE, 6.00" PILOT



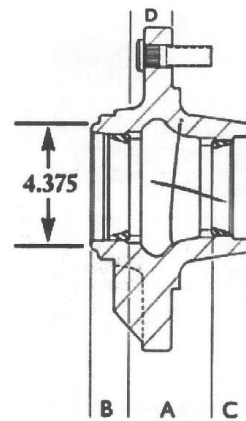
458/458S/458SB



778



813SB



508S/508SB

BRAKE BOLT PATTERNS ARE AS FOLLOWS:

458SB, 508SB - 8 ON 5.50" (1/2"-20); 813SB - 8 ON 8.00" (STUDS THRU)

CORPORATE - WEST COAST SALES
47655 Warm Springs Blvd
Fremont, CA 94539
Toll Free: (800) 808-0348
Phone: (510) 623-1688

HUB DIVISION SALES - DISTRIBUTION
2800 Galvin Drive
Elgin, IL 60124
Toll Free: (877) 808-0348
Phone: (847) 836-8200



8-BOLT, 8.00" BOLT CIRCLE, 6.00" PILOT

	508SB	819SB	821	821S	608S	608SB
CAPACITY LB.	5,000	5,790	5,790	5,790	6,000	6,000
INNER CONE	104948JLM	3780	3780	3780	506849JLM	506849JLM
INNER CUP	104910JLM	3720	3720	3720	506810JLM	506810JLM
OUTER CONE	501349LM	2790	2790	2790	501349LM	501349LM
OUTER CUP	501310LM	2720	2720	2720	501310LM	501310LM
BOLT	N/A	N/A	B1013555	N/A	N/A	N/A
STUD	S1012912	S1013548	N/A	S1013548	S1013556	S1013556
NUT	N1053017	N1013549	N/A	N1013549	N1013557	N1013557
SEAL	SE1046492	SE1006481	SE1006481	SE1006481	SE1006486	SE1006486
GASKET	N/A	N/A	N/A	N/A	N/A	N/A
SLEEVE (Opt)	N/A	N/A	N/A	N/A	N/A	WS1112902
DUST CAP	C1009912	C1009982	C1009982	C1009982	C1009912	C1009912
DIMENSION A	2.711	2.444	2.444	2.444	2.563	2.563
DIMENSION B	1.213	2.412	2.412	2.412	1.502	1.502
DIMENSION C	1.372	1.254	1.254	1.254	1.374	1.374
DIMENSION D	1.423	1.341	1.341	1.341	0.753	0.753
SPINDLE # 1	SP1086048	SP1080985	SP1080980	SP1080980	SP1081315	SP1081315
SPINDLE # 1 (In)	2.500 x 12.500	2.750 x 14.310	2.500 x 15.437	2.500 x 15.437	2.750 x 14.000	2.750 x 14.000
SPINDLE # 2	CUST. SPEC.	CUST. SPEC.	CUST. SPEC.	CUST. SPEC.	CUST. SPEC.	CUST. SPEC.
SPINDLE # 2 (In)	CUST. SPEC.	CUST. SPEC.	CUST. SPEC.	CUST. SPEC.	CUST. SPEC.	CUST. SPEC.

**HUB CAPACITIES BASED ON THE FOLLOWING OFFSETS:
508SB - 0.38" POSITIVE; 819SB, 821, 821S - 1.50" NEGATIVE; 608S, 608SB - 0.38" POSITIVE**

HUB STYLE DESIGNATION

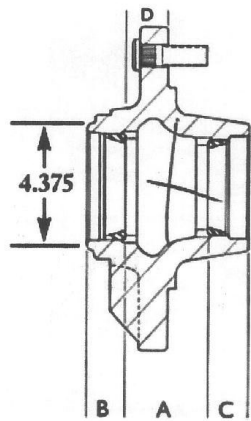
(S) Stud Bolt Version
(B) Brake Version
(G) Grease Zerk

OPTIONAL COMPONENTS

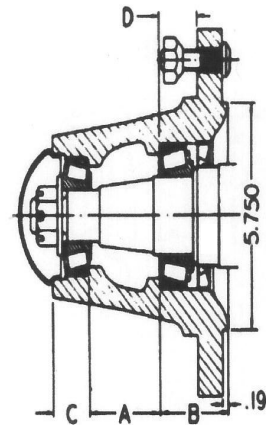
Gasket
Wear Sleeve
Grease Zerk



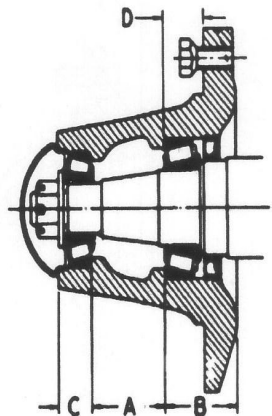
8-BOLT, 8.00" BOLT CIRCLE, 6.00" PILOT



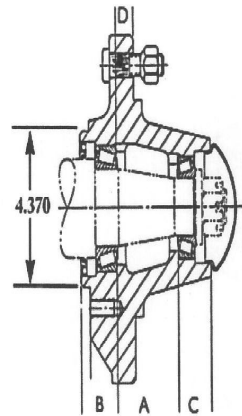
508S/508SB



819SB



821/821S



608S/608SB

**BRAKE BOLT PATTERNS ARE AS FOLLOWS:
508SB, 608SB - 8 ON 5.50" (1/2"-20); 819SB - 8 ON 8.00" (STUDS THRU)**

CORPORATE - WEST COAST SALES
47655 Warm Springs Blvd
Fremont, CA 94539
Toll Free: (800) 808-0348
Phone: (510) 623-1688

HUB DIVISION SALES - DISTRIBUTION
2800 Galvin Drive
Elgin, IL 60124
Toll Free: (877) 808-0348
Phone: (847) 836-8200



8-BOLT, 8.00" BOLT CIRCLE, 6.00" PILOT

	758S	758SB	808	808B	808S	808SB
CAPACITY LB.	7,500	7,500	8,000	8,000	8,000	8,000
INNER CONE	387AS	387AS	506849JLM	506849JLM	506849JLM	506849JLM
INNER CUP	382A	382A	506810JLM	506810JLM	506810JLM	506810JLM
OUTER CONE	501349LM	501349LM	501349LM	501349LM	501349LM	501349LM
OUTER CUP	501310LM	501310LM	501310LM	501310LM	501310LM	501310LM
BOLT	N/A	N/A	B1053027	B1053027	N/A	N/A
STUD	S1043541	S1043541	N/A	N/A	S1043541	S1043541
NUT	N1013557	N1013557	N/A	N/A	N1013557	N1013557
SEAL	SE1046486	SE1046486	SE1006486	SE1006486	SE1006486	SE1006486
GASKET	N/A	N/A	N/A	N/A	N/A	N/A
SLEEVE (Opt)	N/A	N/A	N/A	N/A	N/A	N/A
DUST CAP	C1009912	C1009912	C1009912	C1009912	C1009912	C1009912
DIMENSION A	3.771	3.771	2.723	2.723	2.723	2.723
DIMENSION B	1.521	1.521	1.502	1.502	1.502	1.502
DIMENSION C	1.393	1.393	1.373	1.373	1.373	1.373
DIMENSION D	1.662	1.662	0.833	0.833	0.833	0.833
SPINDLE # 1	SP1081910	SP1081910	SP1081316	SP1081316	SP1081316	SP1081316
SPINDLE # 1 (In)	3.000 x 16.000	3.000 x 16.000	3.000 x 16.000	3.000 x 16.000	3.000 x 16.000	3.000 x 16.000
SPINDLE # 2	CUST. SPEC.	CUST. SPEC.	CUST. SPEC.	CUST. SPEC.	CUST. SPEC.	CUST. SPEC.
SPINDLE # 2 (In)	CUST. SPEC.	CUST. SPEC.	CUST. SPEC.	CUST. SPEC.	CUST. SPEC.	CUST. SPEC.

**HUB CAPACITIES BASED ON THE FOLLOWING OFFSETS:
758S, 758SB - 0.38" POSITIVE; 808, 808B, 808S, 808SB - 0.38" NEGATIVE**

HUB STYLE DESIGNATION

(S) Stud Bolt Version
(B) Brake Version
(H) Heavy Duty

OPTIONAL COMPONENTS

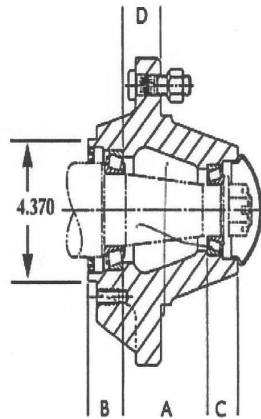
Gasket
Wear Sleeve
Grease Zerk



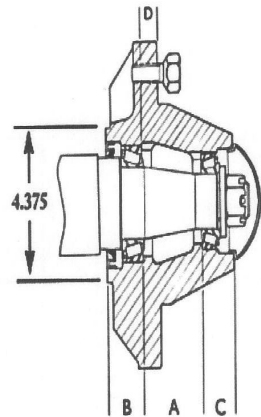
FIT Bearings[®]
The Brand that Fits

**HUB
DRAWINGS**

8-BOLT, 8.00" BOLT CIRCLE, 6.00" PILOT



758S/758SB



808/808B/808S/808SB

BRAKE BOLT PATTERNS ARE AS FOLLOWS: 758SB, 808B, 808SB - 8 ON 5.50" (1/2"-20)

CORPORATE - WEST COAST SALES
47655 Warm Springs Blvd
Fremont, CA 94539
Toll Free: (800) 808-0348
Phone: (510) 623-1688

HUB DIVISION SALES - DISTRIBUTION
2800 Galvin Drive
Elgin, IL 60124
Toll Free: (877) 808-0348
Phone: (847) 836-8200