



FIT Bearings[®]
The Brand that Fits

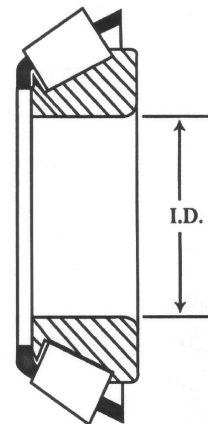
**HUB
 COMPONENTS**

CONES		
CONE	INDUSTRY STD NO.	CONE I.D. (In)
02475	02475	1.2500
102949LM	LM102949	1.7812
104948JLM	JLM104948	1.9685
104949LM	LM104949	2.0000
11749LM	LM11749	0.6875
11949LM	LM11949	0.7500
13600LA	13600LA	1.5000
13686	13686	1.5000
14125A	14125A	1.2500
14136A	14136A	1.3750
14137A	14137A	1.3750
15123	15123	1.2500
205149JM	JM205149	1.9685
212049HM	HM212049	2.6250
218248HM	HM218248	3.5433
25580	25580	1.7500
25590	25590	1.7960
2585	2585	1.3125
25877	25877	1.3750
2790	2790	1.3125
28682	28682	2.2500
29749LM	LM29749	1.5000
33275	33275	2.7500
342A	342A	1.6250
3585	3585	1.6250
3780	3780	2.0000
387A	387A	2.2500

OTHER CONES AVAILABLE

CONES		
CONE	INDUSTRY STD NO.	CONE I.D. (In)
387AS	387AS	2.2500
39581	39581	2.2500
39585	39585	2.5000
39590	39590	2.6250
395S	395S	2.6250
3984	3984	2.6250
44643L	L44643	1.0000
44649L	L44649	1.0625
460	460	1.7500
48548LM	LM48548	1.3750
501349LM	LM501349	1.6250
506849JLM	JLM506849	2.1654
511946JM	JM511946	2.5591
603049LM	LM603049	1.7812
67048LM	LM67048	1.2500
68149L	L68149	1.3775
69349JL	JL69349	1.4961

ALSO AVAILABLE IN SETS



FIT'S CAPABILITIES

With prints and/or samples,
 FIT can supply our customers needs

FIT BEARINGS CERTIFICATION

ISO 9001:2000



FIT Bearings[®]
The Brand that Fits

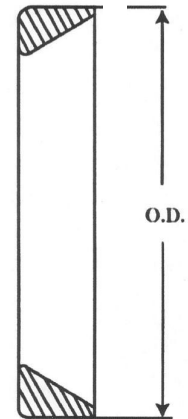
HUB COMPONENTS

CUPS		
CUP	INDUSTRY STD NO.	CUP O.D. (In)
02420	02420	2.6875
102910LM	LM102910	2.8910
104910JLM	JLM104910	3.2283
104912LM	LM104912	3.2650
11710LM	LM11710	1.5700
11910LM	LM11910	1.7810
13621	13621	2.7170
14276	14276	2.7170
15245	15245	2.4409
205110JM	JM205110	3.5433
212011HM	HM212011	4.8125
218210HM	HM218210	5.7864
2520	2520	2.6150
25520	25520	3.2650
25821	25821	2.8750
2720	2720	3.0000
28622	28622	3.8437
29710LM	LM29710	2.5625
332	332	3.1496
33462	33462	4.6250
3525	3525	3.4375
3720	3720	3.6718
382A	382A	3.8125
3920	3920	4.4375
394A	394A	4.3307
39520	39520	4.4375
44610L	L44610	1.9800

OTHER CUPS AVAILABLE

CUPS		
CUP	INDUSTRY STD NO.	CUP O.D. (In)
453A	453A	4.2500
48510LM	LM48510	2.5625
501310LM	LM501310	2.8910
506810JLM	JLM506810	3.5433
511910JM	JM511910	4.3307
603011LM	LM603011	3.0625
67010LM	LM67010	2.3280
68111L	L68111	2.3612
69310JL	JL69310	2.4803

ALSO AVAILABLE IN SETS



CORPORATE - WEST COAST SALES
 47655 Warm Springs Blvd
 Fremont, CA 94539
 Toll Free: (800) 808-0348
 Phone: (510) 623-1688

HUB DIVISION SALES - DISTRIBUTION
 2800 Galvin Drive
 Elgin, IL 60124
 Toll Free: (877) 808-0348
 Phone: (847) 836-8200



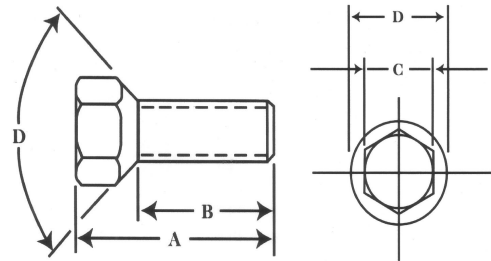
FIT Bearings[®]
The Brand that Fits

HUB COMPONENTS

DRILL AND TAP BOLTS

	THREAD SIZE (In)	A (In)	B (In)	C (In)	DEG.
B1013538	0.5625-18	1.6875	1.1250	0.8750	90
B1013539	0.500-20	1.5000	1.0000	0.7500	90
B1013541	0.500-20	1.6250	0.9063	0.8125	60
B1013555	0.5625-18	2.0000	1.5000	0.8750	90
B1013561	0.625-18	1.0625	1.3750	0.9375	90
B1043549	0.500-20	1.7500	1.2500	0.8125	90
B1053022	0.500-20	1.5000	1.0000	0.8125	90
B1053027	0.625-18	2.0625	1.3750	0.9375	90
B1143303	0.3125-18	0.7007	0.5000	0.5000	TBA

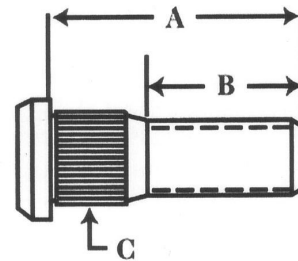
OTHER DRILL AND TAP BOLTS AVAILABLE - STD. GR. 5



DRIVE-IN STUDS

	THREAD SIZE (In)	A (In)	B (In)	C (In)	FINISH
S1012912	0.625-18	2.2500	1.5000	0.6800	G. ZINC
S1013548	0.5625-18	2.1250	1.3125	0.6150	G. ZINC
S1013556P	0.625-18	2.2500	1.5000	0.6800	G. ZINC
S1013564P	0.750-16	2.5625	1.5625	1.0070	G. ZINC
S1013574P	0.500-20	1.6250	1.1250	0.6150	G. ZINC
S1013576P	0.500-20	1.8750	1.3125	0.6150	G. ZINC
S1043541	0.625-18	2.5000	1.6250	0.6800	G. ZINC
S1053002P	0.500-20	1.8750	1.3750	0.5370	G. ZINC
S1053033P	0.750-16	2.8125	1.8125	1.0070	G. ZINC

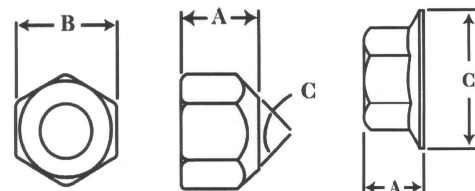
OTHER DRIVE-IN STUDS AVAILABLE - STD. GR. 8



DRIVE-IN STUD NUTS

	THREAD SIZE (In)	A (In)	B (In)	C (In)	TYPE
N1012919	0.500-20	0.6250	0.8125	90	HEX
N1012935	0.750-16	0.6875	1.5000	RADIUS	BUDD
N1013549	0.5625-18	0.7188	1.0000	90	HEX
N1013557	0.625-18	0.7188	0.9375	90	HEX
N1013571	0.750-16	0.1000	1.2500	90	FLANGE
N1053017	0.625-18	0.8750	0.9375	90	HEX

OTHER DRIVE-IN STUD NUTS AVAILABLE - STD. GR. 5



FIT'S CAPABILITIES

With prints and/or samples,
FIT can supply our customers needs

38

FIT Bearings

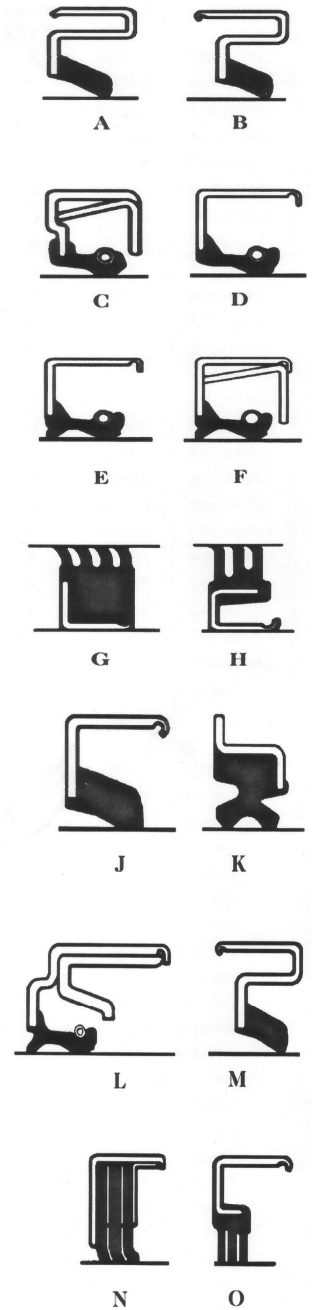
Goes the extra mile for the customer



FIT Bearings®
The Brand that Fits

HUB COMPONENTS

SEALS					
	C/R OR TCM	I.D. (In)	O.D. (In)	W (In)	TYPE
SE1006281	17146	1.7190	2.5620	0.5000	B
SE1006282	12437	1.2500	1.9830	0.2500	A
SE1006283	15190	1.5000	2.6230	0.2500	A
SE1006284	16289	1.6250	2.5620	0.4380	B
SE1006285	20148	2.0000	3.6230	0.2500	A
SE1006293	16069	1.6250	2.3280	0.4380	B
SE1006294	20044	2.0000	3.0610	0.2500	A
SE1006295	17617	1.7500	2.7180	0.3590	B
SE1006296	14975	1.5000	2.3280	0.3900	B
SE1006297	22392	2.2500	3.0610	0.2500	A
SE1006476	15174	1.5000	2.4620	0.2900	C
SE1006477	16286	1.6250	2.4620	0.2500	H
SE1006481	25091	2.5000	3.7510	0.4380	C
SE1006486	27394	2.7500	3.7510	0.2500	A
SE1006487	22870	2.2970	3.1480	0.3590	B
SE1006493	18823	1.8750	3.0000	0.2500	A
SE1006494	12428	1.2500	1.9830	0.2500	E
SE1006495	20125	2.0000	3.3710	0.4380	F
SE1006497	30087	3.0000	4.5000	0.4380	C
SE1006979	43771	4.3750	6.0010	0.0500	C
SE1046275	33772	3.3750	4.6260	0.4380	C
SE1046276	27362	2.7500	3.7510	0.4380	E
SE1046486	29968	3.0000	4.0030	0.2500	A
SE1050051	12427	1.2500	1.9790	0.4060	D
SE1050052	14824	1.5000	1.9830	0.2500	E
SE1050053	171255TB	1.7190	2.5610	0.5000	E
SE1050054	171255VB	1.7190	2.5610	0.5000	J
SE1050055	21333TB	2.1250	3.3710	0.3130	E
SE1050056	22333TB	2.2500	3.3710	0.3750	E
SE1102111	14974	1.5000	2.3280	0.5000	B
SE1102113	15209	1.5000	2.7160	0.2500	A



OTHER SEALS AVAILABLE

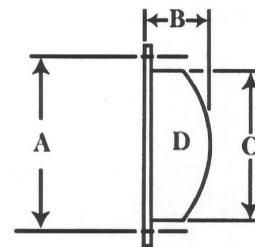
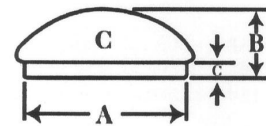
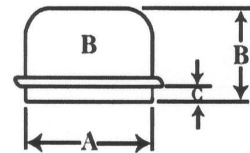
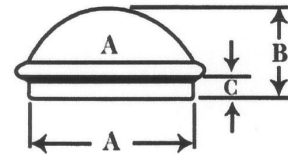
CORPORATE - WEST COAST SALES
 47655 Warm Springs Blvd
 Fremont, CA 94539
 Toll Free: (800) 808-0348
 Phone: (510) 623-1688

HUB DIVISION SALES - DISTRIBUTION
 2800 Galvin Drive
 Elgin, IL 60124
 Toll Free: (877) 808-0348
 Phone: (847) 836-8200



DUST CAPS

	THICKNESS (In)	A (In)	B (In)	C (In)	TYPE
C1009900	0.0320	1.9860	1.2500	0.3750	B
C1009902	0.0740	2.4480	1.2400	0.2500	A
C1009904	0.0590	2.4480	1.1600	0.2800	C
C1009905	0.0740	2.4480	1.1200	0.2500	A
C1009911	0.0600	1.9560	0.9370	0.3120	C
C1009912	0.0600	3.1250	1.3100	0.3750	C
C1009913	0.0320	1.9850	1.1600	0.3830	B
C1009916	0.0480	2.5650	1.3100	0.2500	B
C1009917	0.0600	1.9750	0.9300	0.3120	A
C1009919	0.0320	2.4460	1.3400	0.3120	A
C1009921	0.1040	5.5000	1.9100	4.3400	D
C1009926	0.0360	2.7200	1.4370	0.3130	A
C1009928	0.0740	2.7180	0.9300	0.4370	C
C1009931	0.0600	1.9420	1.3750	0.2810	A
C1009932	0.0350	3.3540	1.6250	0.5600	B
C1009935	0.0600	1.9860	0.9100	0.3830	C
C1009965	0.0600	1.9820	1.0000	0.3130	A
C1009982	0.0600	3.1530	1.4680	0.3120	C
C1009983	0.0600	5.0000	1.7500	3.6800	D
C1049901	TBA	2.4400	TBA	TBA	B
C1049902	TBA	2.7170	TBA	TBA	B



OTHER DUST CAPS AVAILABLE

FIT'S CAPABILITIES

With prints and/or samples,
FIT can supply our customers needs

FIT BEARINGS

Our customers are our # 1 priority