



5-BOLT, 4.50" BOLT CIRCLE, 2.50" PILOT

	545-1TB	545S-1TB	545-1SB	545S-1SB	545-1-15TB	545S-1-15TB
CAPACITY LB.	1,000	1,000	1,000	1,200	1,200	1,200
INNER CONE	44643L	44643L	44643L	44643L	44643L	44643L
INNER CUP	44610L	44610L	44610L	44610L	44610L	44610L
OUTER CONE	44643L	44643L	44643L	44643L	44643L	44643L
OUTER CUP	44610L	44610L	44610L	44610L	44610L	44610L
BOLT	B1013541	N/A	B1013541	N/A	B1013541	N/A
STUD	N/A	S1053002	N/A	S1053002	N/A	S1053002
NUT	N/A	N1012918	N/A	N1012918	N/A	N1012918
SEAL	SE1006494	SE1006494	SE1050051	SE1050051	SE1050052	SE1050052
GASKET	N/A	N/A	N/A	N/A	N/A	N/A
SLEEVE (Opt)	N/A	N/A	N/A	N/A	N/A	N/A
DUST CAP	C1009900	C1009900	C1009900	C1009900	C1009900	C1009900
DIMENSION A	2.440	2.440	2.440	2.440	2.440	2.440
DIMENSION B	0.830	0.830	0.830	0.830	0.830	0.830
DIMENSION C	0.940	0.940	0.940	0.940	0.940	0.940
DIMENSION D	1.300	1.300	1.300	1.300	1.300	1.300
SPINDLE # 1	SP15104BT8	SP15104BT8	SP15104BT8	SP15104BT8	SP15104BT8	SP15104BT8
SPINDLE # 1 (In)	1.250 X 8.250	1.250 X 8.250	1.250 X 8.250	1.250 X 8.250	1.250 X 8.250	1.250 X 8.250
SPINDLE # 2	CUST. SPEC.	CUST. SPEC.	CUST. SPEC.	CUST. SPEC.	CUST. SPEC.	CUST. SPEC.
SPINDLE # 2 (In)	CUST. SPEC.	CUST. SPEC.	CUST. SPEC.	CUST. SPEC.	CUST. SPEC.	CUST. SPEC.

HUB CAPACITIES BASED ON THE FOLLOWING OFFSET: 0.00"

HUB STYLE DESIGNATION

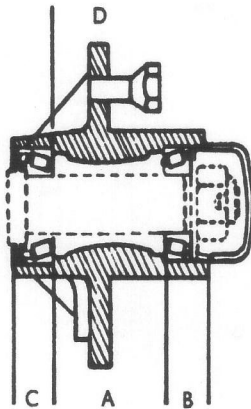
(S) Stud Bolt Version
 (B) Brake Version
 (G) Grease Zerk

TRAILER HUB SEAL DESIGNATION

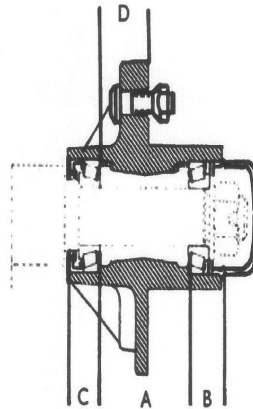
(TB) Double Lip Version
 (SB) Single Lip Version
 (VB) Single Lip, no Spring Version



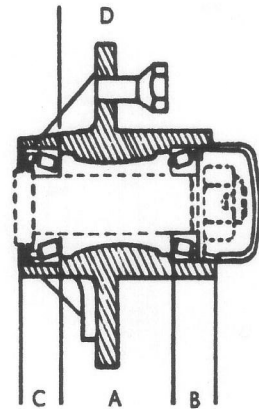
5-BOLT, 4.50" BOLT CIRCLE, 2.50" PILOT



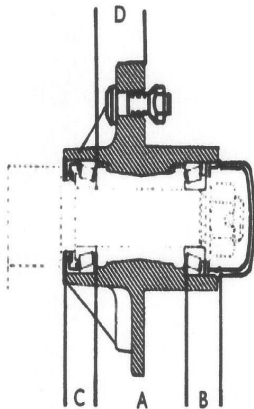
545-1TB



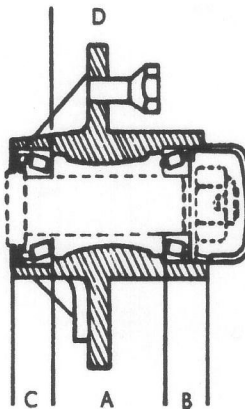
545S-1TB



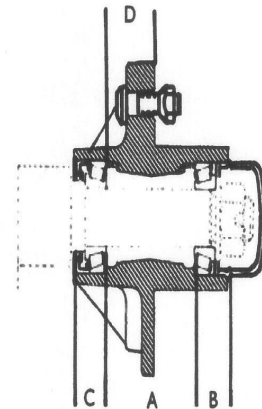
545-1SB



545S-1SB



545-1-15TB



545S-1-15TB

ASK YOUR SALES REPRESENTATIVE REGARDING FIT'S SOURCING CAPABILITIES

CORPORATE - WEST COAST SALES
47655 Warm Springs Blvd
Fremont, CA 94539
Toll Free: (800) 808-0348
Phone: (510) 623-1688

HUB DIVISION SALES - DISTRIBUTION
2800 Galvin Drive
Elgin, IL 60124
Toll Free: (877) 808-0348
Phone: (847) 836-8200



5-BOLT, 4.50" BOLT CIRCLE, 2.50" PILOT

	545-116TB	545S-116TB	545-116SB	545S-116SB	545-116-15TB	545S-116-15TB
CAPACITY LB.	1,000	1,000	1,000	1,200	1,200	1,200
INNER CONE	44649L	44649L	44649L	44649L	44649L	44649L
INNER CUP	44610L	44610L	44610L	44610L	44610L	44610L
OUTER CONE	44649L	44649L	44649L	44649L	44649L	44649L
OUTER CUP	44610L	44610L	44610L	44610L	44610L	44610L
BOLT	B1013541	N/A	B1013541	N/A	B1013541	N/A
STUD	N/A	S1053002	N/A	S1053002	N/A	S1053002
NUT	N/A	N1012918	N/A	N1012918	N/A	N1012918
SEAL	SE1006494	SE1006494	SE1050051	SE1050051	SE1050052	SE1050052
GASKET	N/A	N/A	N/A	N/A	N/A	N/A
SLEEVE (Opt)	N/A	N/A	N/A	N/A	N/A	N/A
DUST CAP	C1009900	C1009900	C1009900	C1009900	C1009900	C1009900
DIMENSION A	2.440	2.440	2.440	2.440	2.440	2.440
DIMENSION B	0.830	0.830	0.830	0.830	0.830	0.830
DIMENSION C	0.940	0.940	0.940	0.940	0.940	0.940
DIMENSION D	1.300	1.300	1.300	1.300	1.300	1.300
SPINDLE # 1	SP15104BT8	SP15104BT8	SP15104BT8	SP15104BT8	SP15104BT8	SP15104BT8
SPINDLE # 1 (In)	1.250 X 8.250	1.250 X 8.250	1.250 X 8.250	1.250 X 8.250	1.250 X 8.250	1.250 X 8.250
SPINDLE # 2	CUST. SPEC.	CUST. SPEC.	CUST. SPEC.	CUST. SPEC.	CUST. SPEC.	CUST. SPEC.
SPINDLE # 2 (In)	CUST. SPEC.	CUST. SPEC.	CUST. SPEC.	CUST. SPEC.	CUST. SPEC.	CUST. SPEC.

HUB CAPACITIES BASED ON THE FOLLOWING OFFSET: 0.00"

HUB STYLE DESIGNATION

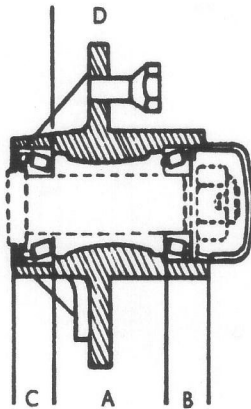
(S) Stud Bolt Version
(B) Brake Version
(H) Heavy Duty

TRAILER HUB SEAL DESIGNATION

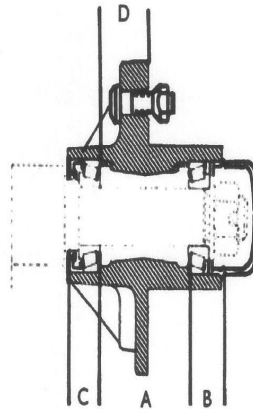
(TB) Double Lip Version
(SB) Single Lip Version
(VB) Single Lip, no Spring Version



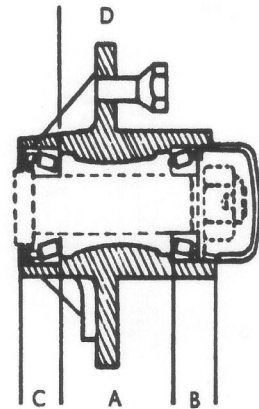
5-BOLT, 4.50" BOLT CIRCLE, 2.50" PILOT



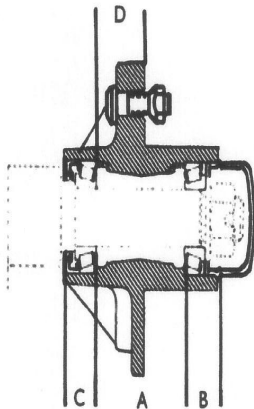
545-116-TB



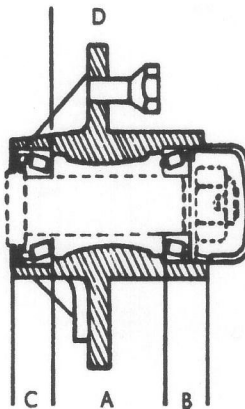
545S-116-TB



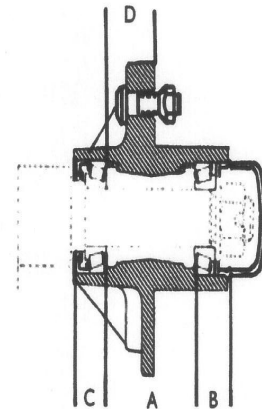
545-116-SB



545S-116-SB



545-116-15TB



545S-116-15TB

PLEASE GIVE US A CALL; WE CAN ASSIST YOU WITH QUOTES, SAMPLES, AND/OR QUESTIONS

CORPORATE - WEST COAST SALES
47655 Warm Springs Blvd
Fremont, CA 94539
Toll Free: (800) 808-0348
Phone: (510) 623-1688

HUB DIVISION SALES - DISTRIBUTION
2800 Galvin Drive
Elgin, IL 60124
Toll Free: (877) 808-0348
Phone: (847) 836-8200



FIT Bearings[®]
The Brand that Fits

HUBS

	5-BOLT, 4.50" B.C., 2.50" PILOT		6-BOLT, 5.50" B.C., 4.27" PILOT		8-BOLT, 6.50" B.C., 4.74" PILOT	
	545S-138TB	545S-138VB	655S-21TB	655S-22TB	865S-21TB	865S-22TB
CAPACITY LB.	1,750	1,750	2,600	2,600	3,500	3,500
INNER CONE	68149L	68149L	25580	25580	25580	25580
INNER CUP	68111L	68111L	25520	25520	25520	25520
OUTER CONE	44649L	44649L	15123	15123	14125A	14125A
OUTER CUP	44610L	44610L	15245	15245	14276	14276
BOLT	N/A	N/A	N/A	N/A	N/A	N/A
STUD	S1053002	S1053002	S1053002	S1053002	S1053002	S1053002
NUT	N1012918	N1012918	N1012918	N1012918	N1012918	N1012918
SEAL	SE1050053	SE1050054	SE1050055	SE1050056	SE1050055	SE1050056
GASKET	N/A	N/A	N/A	N/A	N/A	N/A
SLEEVE (Opt)	N/A	N/A	N/A	N/A	N/A	N/A
DUST CAP	C1009900	C1009900	C1049901	C1049901	C1049902	C1049902
DIMENSION A	2.120	2.120	TBA	TBA	TBA	TBA
DIMENSION B	0.910	0.910	TBA	TBA	TBA	TBA
DIMENSION C	1.100	1.100	TBA	TBA	TBA	TBA
DIMENSION D	1.140	1.140	TBA	TBA	TBA	TBA
SPINDLE # 1	SP1520484	SP1520484	SP1550642	SP1550642	SP1550642	SP1550642
SPINDLE # 1 (In)	1.750 x 8.250	1.750 x 8.250	2.250 x 11.000	2.250 x 11.000	2.250 x 11.000	2.250 x 11.000
SPINDLE # 2	CUST. SPEC.	CUST. SPEC.	CUST. SPEC.	CUST. SPEC.	CUST. SPEC.	CUST. SPEC.
SPINDLE # 2 (In)	CUST. SPEC.	CUST. SPEC.	CUST. SPEC.	CUST. SPEC.	CUST. SPEC.	CUST. SPEC.

HUB CAPACITIES BASED ON THE FOLLOWING OFFSETS:

545S-138TB, 545S-138VB - 0.00"; 655S-21TB, 655S-22TB, 865S-21TB, 865S-22TB - TBA

HUB STYLE DESIGNATION

(S) Stud Bolt Version
 (B) Brake Version
 (G) Grease Zerk

32

TRAILER HUB SEAL DESIGNATION

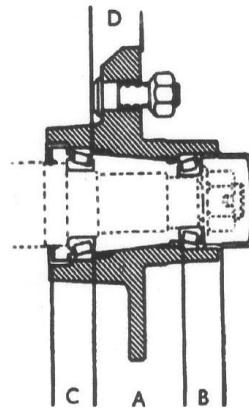
(TB) Double Lip Version
 (SB) Single Lip Version
 (VB) Single Lip, no Spring Version



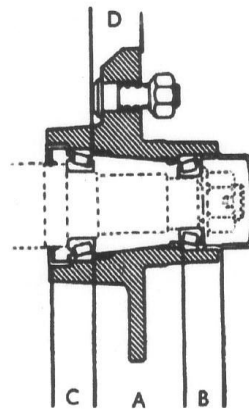
FIT Bearings®
The Brand that Fits

**HUB
DRAWINGS**

5-BOLT, 4.50" BOLT CIRCLE, 2.50" PILOT



545S-138TB



545S-138VB

**ALL 655S and 865S
Hub Drawings TBA**

CUSTOMERS ARE ALWAYS ENCOURAGED TO VISIT FIT'S SHANGHAI QUALITY CONTROL CENTER

CORPORATE - WEST COAST SALES
47655 Warm Springs Blvd
Fremont, CA 94539
Toll Free: (800) 808-0348
Phone: (510) 623-1688

33

HUB DIVISION SALES - DISTRIBUTION
2800 Galvin Drive
Elgin, IL 60124
Toll Free: (877) 808-0348
Phone: (847) 836-8200