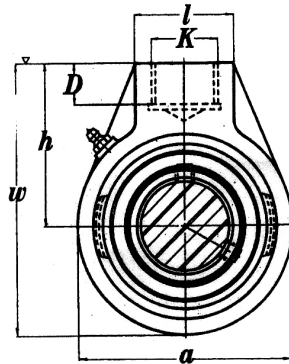
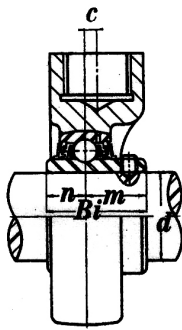




**FIT Bearings®**  
The Brand that Fits

**MOUNTED UNITS**  
UCHA 200 Hanger Units  
Setscrew Type, Normal Duty



B type Seal L-III type Seal

ISO 9001:2000	DIMENSIONS												COMPONENTS		WT.
Part Number	d	d	w	a	c	h	l	D	K	Bi	n	m	Bearing Number	Housing Number	lbs
	inch	mm	inch												
UCHA201 201-8	1/2	12											UC201 201-8	HA201	1.543
UCHA202 202-10	5/8	15	3.78	2.51	TBA	2.51	1.56	0.75	0.75	1.22	0.50	0.72	UC202 202-10	HA202	
UCHA203 204-12 204	3/4 20	17											UC203 204-12 204	HA203 HA204	
UCHA205-14 205-15 205 205-16	7/8 15/16 25 1	25	4.06	3.06	TBA	2.51	1.56	0.75	0.75	1.33	0.56	0.77	UC205-14 205-15 205 205-16	HA205	
UCHA206-18 206 206-19 206-20	1 1/8 1 3/16 1 1/4	30	4.04	3.06	TBA	2.51	1.56	0.75	0.75	1.50	0.62	0.87	UC206-18 206 206-19 206-20	HA206	2.205
UCHA207-20 207-21 207-22 207 207-23	1 1/4 1 15/16 1 3/8 35 1 7/16	35	4.56	3.62	TBA	2.75	1.56	0.75	0.75	1.68	0.68	1.00	UC207-20 207-21 207-22 207 207-23	HA207	2.645
UCHA208-24 208-25 208	1 1/2 1 9/16	40	4.75	3.78	0.07	2.87	1.56	0.75	0.75	1.93	0.74	1.18	UC208-24 208-25 208	HA208	2.866

**FIT STRIVES FOR LONG-TERM, WIN-WIN BUSINESS RELATIONSHIPS**

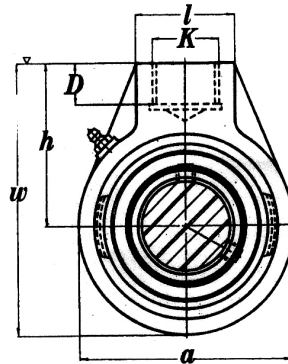
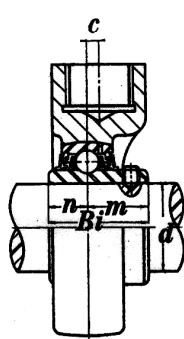
**CORPORATE - WEST COAST SALES**  
47655 Warm Springs Blvd  
Fremont, CA 94539  
Toll Free: (800) 808-0348  
Phone: (510) 623-1688

**MIDWEST SALES - DISTRIBUTION**  
2800 Galvin Drive  
Elgin, IL 60124  
Toll Free: (877) 808-0348  
Phone: (847) 836-8200



**FIT Bearings®**  
The Brand that Fits

**MOUNTED UNITS**  
UCHA 200 Hanger Units  
Setscrew Type, Normal Duty



B type Seal L-III type Seal

ISO 9001:2000	DIMENSIONS												COMPONENTS		WT.		
Part Number	d	d	w	a	c	h	l	D	K	Bi	n	m	Bearing Number	Housing Number	lbs		
	inch	mm	inch														
<b>UCHA209-26</b>	1 5/8												UC209-26				
209-27	1 11/16		5.34	4.25	0.20	3.23	1.87	0.81	1.00	1.93	0.74	1.18	209-27	HA209	3.968		
209-28	1 3/4												209-28				
209		45											209				
<b>UCHA210-30</b>	1 7/8												UC210-30				
210-31	1 15/16		5.59	4.65	0.20	3.26	1.87	0.81	1.00	2.03	0.74	1.28	210-31	HA210	4.630		
210		50											210				
<b>UCHA211-32</b>	2												UC211-32				
211-34	2 1/8		5.90	4.96	0.28	3.42	2.37	1.00	1.25	2.18	0.87	1.31	211-34	HA211	6.173		
211		55											211				
211-35	2 3/16												211-35				
<b>UCHA212-36</b>	2 1/4												UC212-36				
212		60	6.81	5.59	0.35	4.01	2.37	1.09	1.25	2.56	1.00	1.56	212	HA212	8.598		
212-38	2 3/8												212-38				
212-39	2 7/16												212-39				
<b>UCHA213-40</b>	2 1/2												UC213-40				
213		65	7.87	6.53	0.37	4.60	2.75	1.25	1.50	2.56	1.00	1.74	213	HA213	13.007		
<b>UCHA214-44</b>	2 3/4												UC214-44				
214		70	7.87	6.53	0.37	4.60	2.75	1.25	1.50	2.93	1.18	1.74	214				
<b>UCHA215-47</b>	2 15/16												UC215-47				
215-48	3		7.87	6.53	0.37	4.60	2.75	1.25	1.50	3.06	1.31	1.75	215-48	HA215	13.007		

**FIT SPECIALIZES IN BEARINGS, SEALS, AND CASTINGS**

**CORPORATE - WEST COAST SALES**  
47655 Warm Springs Blvd  
Fremont, CA 94539  
Toll Free: (800) 808-0348  
Phone: (510) 623-1688

**MIDWEST SALES - DISTRIBUTION**  
2800 Galvin Drive  
Elgin, IL 60124  
Toll Free: (877) 808-0348  
Phone: (847) 836-8200